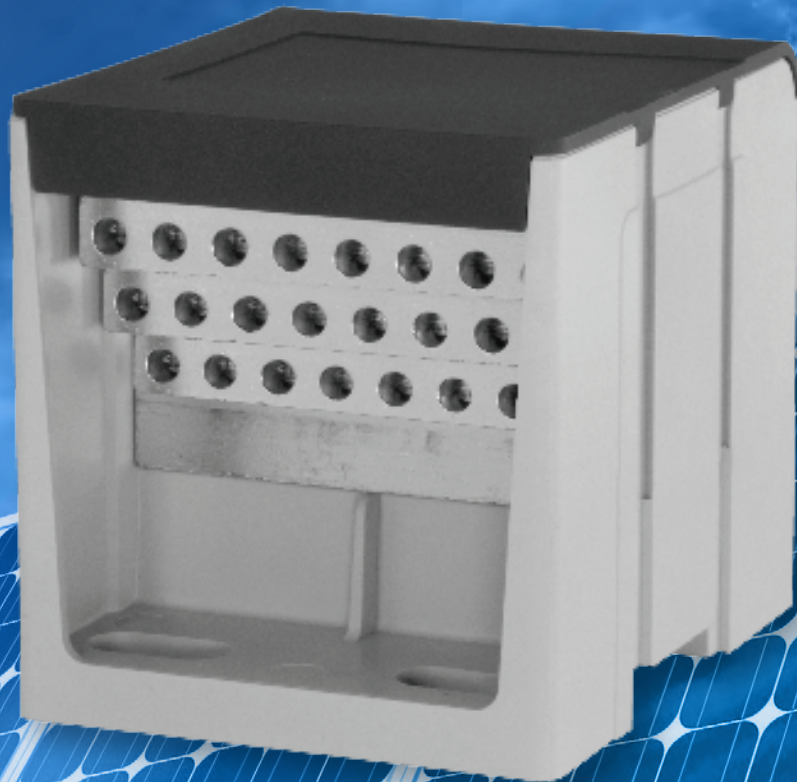


Altech Corp.®

Certified System™
ISO 9001
Quality

New Power Distribution Block for Solar Systems

P400A



P400A

The P400A Power Distribution Block is the perfect solution for Solar Combiner Box Applications. With 1500 V UL approval and a maximum current of 800 A for aluminum and copper wires, the PDB400A has the ratings required for the Solar Industry. Easy and quick mounting on DIN rail or directly to a mounting plate provides flexibility and security.

- Line: 2 Studs M10 x 35mm
 - Suitable for listed lugs or copper bars
 - Lugs must fit on M10 studs, 1.55" (39mm) max width
- Load: 24x #6 - 14 AWG Copper wire
#6 - 10 AWG Aluminum wire

Technical Ratings

- 1500V per UL 1059 Class E & CSA 22.2 No.158, Class C requirements
- 600V per UL 1059 Service & Industrial Class C requirements
- 600V per CSA 22.2 No.158 Service & Industrial Class E requirements
- Short Circuit Current Rating (SCCR) of 10.000A
- CU 9 - 90°C connector terminal rating

UL Listing

- Tested for 1500V AC/DC, rated to UL 1059

Technical data

Max. operating voltage	1 500 V AC/DC
Max. operating current	800A with (2) 600mcm incoming wires 400A with (1) 600mcm incoming wire
Suitable Conductors	solid / stranded
PDB Block Material	tin plated Aluminum
Housing Color	light grey / dark grey
Part#	
Cover	#38687
Power Distribution Block	#38689
PDB with cover	#38690

