

USED ON MINI-APPL

PART NUMBER 687716-2
 REV F
 FIRST USED 565435-5

APPLICATOR PARTS LIST

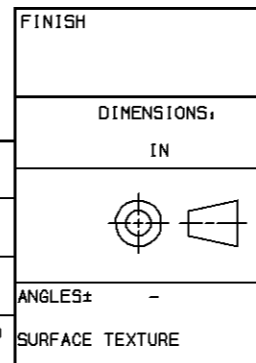
TYPE END FEED

NO.	DESCRIPTION	REQ.	PART NO.	NO.	DESCRIPTION	REQ.	PART NO.	CRIMPING DATA			TERMINALS
1	▲ CRIMPER, CROWN	1	693076-1	42	WASHER, RAM	1	690124-1	TO APPLY TERMINAL			40629 B
2	SPACER, INSULATION	-	-	43	WASHER, LAMINATED	1	690125-1	CROWN CRIMP			42517-1
3	▲ INSULATION CRIMPER	-	-	44	RAM	1	693082-1	PAD LTR	CRIMP HEIGHT	WIRE SIZE	60640-1 B
4	PIN, SEPARATING	1	693077-1	45	PLUG, NYLON	1	690191-1	A	.070	14	-
5	SHEAR BLADE SPACER	1	6-240641-6	46	BLOCK, INSULATION ADJ	-	-	B	.065	16	-
6	HOLD DOWN	-	-	47	SCREW, SHOULDER	-	-	C	.062	18	-
7	▲ SHEAR BLADE	1	240651-8	48	CAM	1	690602-2	D	NOT	USED	-
8	▲ ANVIL	1	693078-1	49	CRIMPER BOLT	1	7-21002-9	-	-	-	-
9	▲ FRONT SHEAR PLATE	1	693080-1	50	-	-	-	CRIMP	SIZE	TYPE	FEED
10	SHEAR PLATE SPACER	2	1-240645-1	51	-	-	-	O.D.	#10	.385	-
11	▲ REAR SHEAR PLATE	1	240833-2	52	LEVER, TERMINAL	1	240634-1	I.D.	#10	.194	.496
12	HOLDER, ANVIL	1	693079-1	53	FEED FINGER	1	240635-1	-	-	-	-
13	SPRING, SPACER	-	-	54	FEED FINGER SPRING	1	691499-1	INSULATION RANGE		WIRE RANGE	
14	HOLD DOWN SPACER	-	-	55	FEED FINGER PIN	1	240624-1	-	-	18-14	
15	-	-	-	56	-	-	-	EXPLODED VIEW			
16	SPRING, FEED RETURN	1	3-22287-0	57	-	-	-	A-6032-4			
17	ANCHOR, SPRING	1	238008-1	58	HOUSING	1	240619-1	REMARKS:			
18	FRONT, STRIP GUIDE	1	454204-3	59	CAP	1	240621-1	▲ RECOMMENDED SPARE PARTS			
19	REAR, STRIP GUIDE	1	454204-3	60	WEAR PLATE	1	240845-1	▲ MOUNT ANVIL WITH FLAT TOWARD FRONT SHEAR PLATE, ITEM 9.			
20	DRAG, STOCK	1	240637-1	61	ROD, FEED	1	240631-1	▲ BASE PLATE ITEM 78 TO BE SHIPPED WITH APPLICATOR.			
21	DRAG LEVER	1	240636-1	62	ROLLER, CAM	1	240658-1	▲ REQUIRED FOR A.O.L.			
22	DRAG SPRING	1	7-22282-5	63	PIN, CAM ROLLER	1	240659-1	▲ NOT REQUIRED FOR A.O.M.			
23	▲ PLATE, STRIP HOLD	1	240825-4	64	SCREW, ADJUSTABLE	1	240632-1	▲ FOR FIELD REPLACEMENT ONLY.			
24	STRIP GUIDE PLATE	1	240648-1	65	BLOCK, PIVOT	1	240629-1	-			
25	BASE BLOCK	1	240647-1	66	LEVER, INTERMEDIATE	1	240630-1	AMP-0-LECTRIC PRE-FEED			
26	BASE PLATE	1	693081-1	67	BUSHING	1	240633-1	SERIAL NO. DATE SHIPPED			
27	▲ STRIPPER	-	-	68	SHAFT, PIVOT	1	240626-1	CUSTOMER NAME AND ADDRESS			
28	RETAINING PLATE	-	-	69	PLATE ADJ	1	240628-1				
29	SHOULDER SCREW	-	-	70	HEX NUT	1	22594-8				
30	ANCHOR, SPACER	1	690453-1	71	SPACER	1	690517-1				
31	SPACER, BASE BLOCK	1	690408-1	72	SPRING ASSIST	1	690603-1				
32	-	-	-	73	WASHER, ADJ PLATE	1	458109-1				
33	-	-	-	78	▲ PLATE, ADAPTER	1	458653-1				
34	-	-	-	79	GUARD	REF	455745-1				
35	POST, RAM	1	690212-1								
36	SPRING WASHER	1	22480-5								
37	DISC, WIRE	1	7-690692-1								
38	DISC, INSULATION	-	-								
39	SPRING, COMPRESSION	1	690170-1								
40	BALL, STEEL	1	23241-6								
41	DISC SPACER	1	690223-1								

FINISH	-	DWN	7-12-92	MATERIAL	M.O'BRINE	HEAT TREAT	-
DIMENSIONS IN		CHK	7-16-92	L.KENSINGER			
TOLERANCES UNLESS OTHERWISE SPECIFIED:		APVD	7-30-92	B.WOLFE			
0 PLC ±		AMP Incorporated Harrisburg, PA 17105-3608					
1 PLC ±		NAME					
2 PLC ±		END FEED HDM APPLICATOR					
3 PLC ±		SCALE	SIZE	DRAWING NO	SHEET	REV	
4 PLC ±		-	A3	687716-2	1 OF 2	F1	
ANGLES ±	-	CUSTOMER AND ASSEMBLY DRAWING					
SURFACE TEXTURE	✓	RESTRICTED TO					

LOC A
DIST 66

P	LTR	REVISION RECORD	DATE	DWN	APVD
		F1 0150-8695-98	27 JUL 98	DS	-



THIS DRAWING IS UNPUBLISHED. RELEASED FOR PUBLICATION JUL 15, 1998 BY AMP INCORPORATED. ALL INTERNATIONAL RIGHTS RESERVED.

DWG NO 687716-2

D
C
B
A

