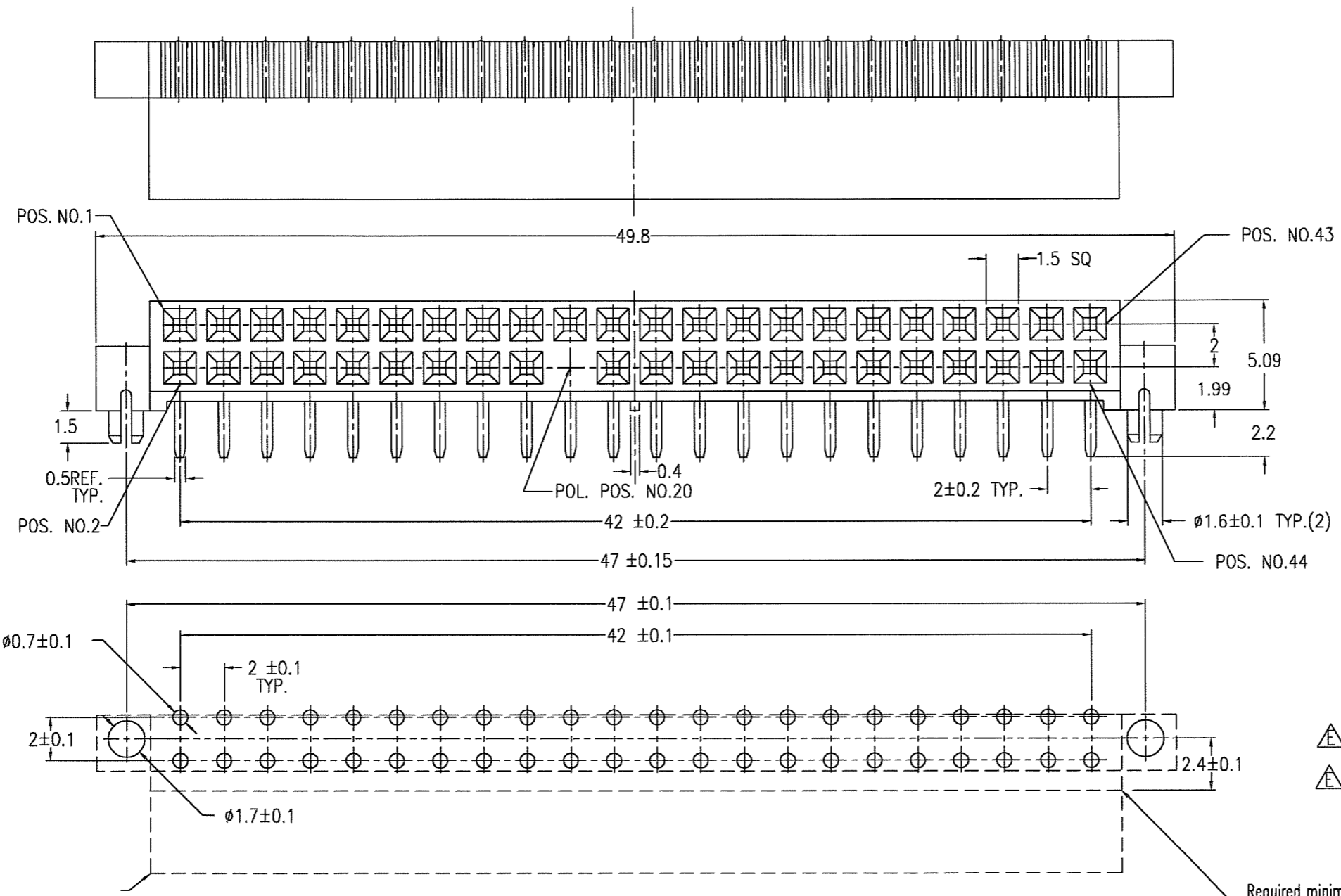


PRODUCT NO.	POS.	POLARIZED POS.
94882-001	2X22	NO.20
△ 94882-001LF	2X22	NO.20



- ① MATL : HOUSING PPS UL94V-0
COLOR BROWN
TERMINAL PHOSPHOR BRONZE
- ② PLATING: CONTACT AREA Au 0.2 μm MIN.
SOLDER TAIL AREA SnPb 1.5 μm MIN.
- 3 CUT SURFACE IS UNPLATED
- 4 GENERAL TOLERANCE : ±0.25
- 5 APPROPRIATE HDR SHOULD BE POLARIZED
AT POS. NO.20.
- △ ⑥ 94882-001LF PLATING CONTACT AREA Au 0.2 μm MIN
SOLDER TAIL AREA Au Flash
- △ 7 THIS PRODUCT MEETS EUROPEAN UNION DIRECTIVES
AND OTHER COUNTRY REGULATIONS
AS DESCRIBED IN GS-22-008.

Required minimum PCB edge
(=edge of connector bottom surface)

mat'l. code	surface	tolerance	projection	product family	CODE
---	ISO 1302	ISO 406	ISO 1101	5MUF - MINITEK TERMINALS	JP
ltr	description	ecn no	dr	date	title
E	REVISED	J06-0061	R.S	2/21/06	MINITEK STP HCC FOR MCC
F	REVISED	J06-0352	R.S	8/30/06	
					scale 4:1
					sheet 1 of 2
					size A2
					94882
					type Product Customer Drawing
sheet index	revision sheet	F			Rev. F

FCI CONFIDENTIAL

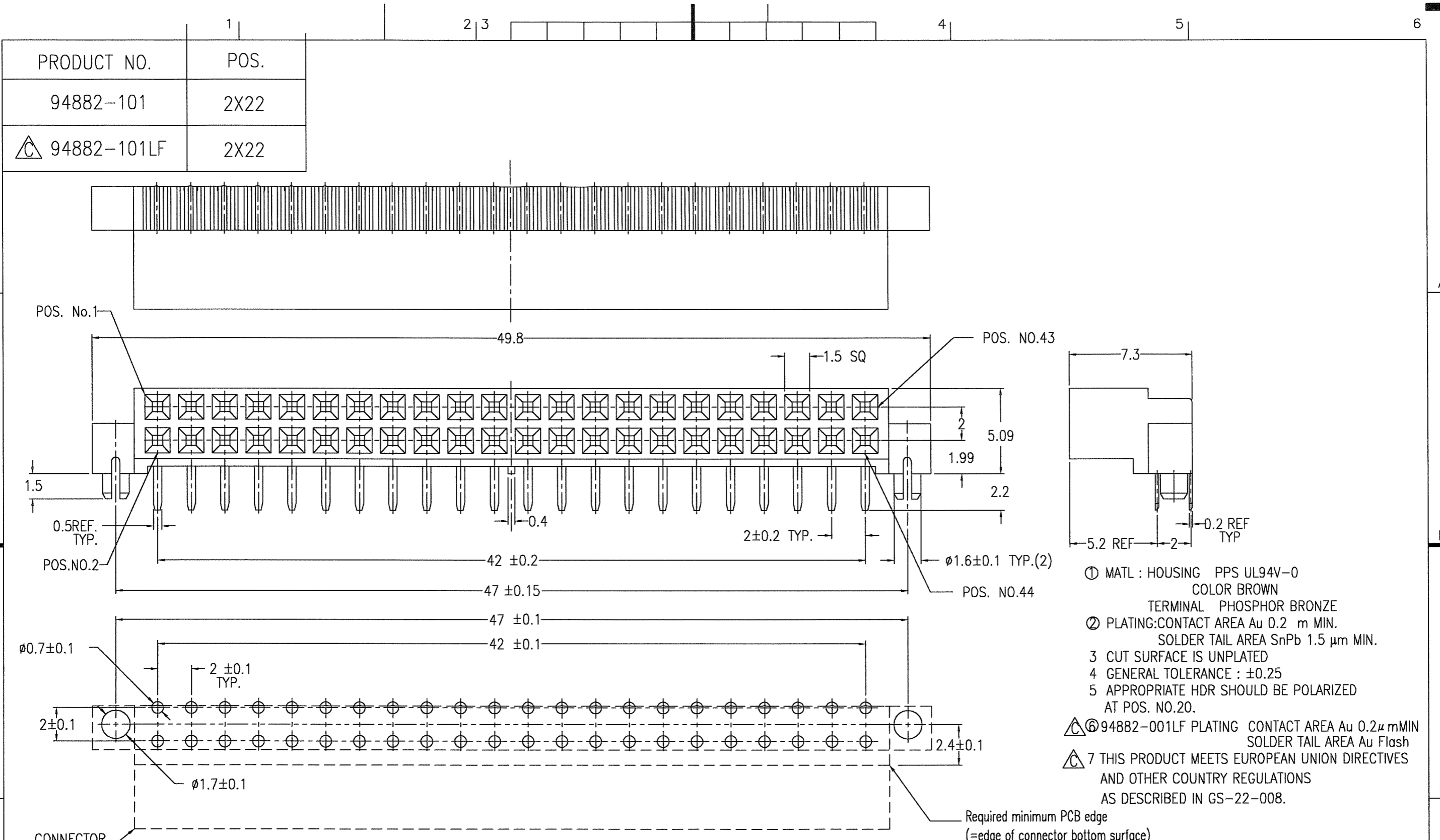
FCI

This document is the property of and embodies CONFIDENTIAL and PROPRIETARY information of FCI. No part of the information shown on this document may be used in any way or disclosed to others without the written consent of FCI. Copyright FCI.

FCI CONFIDENTIAL



This document is the property of and embodies CONFIDENTIAL and PROPRIETARY information of FCI. No part of the information shown on this document may be used in any way or disclosed to others without the written consent of FCI. Copyright FCI.



- ① MATL : HOUSING PPS UL94V-0
COLOR BROWN
- ② PLATING: CONTACT AREA Au 0.2 μ m MIN.
SOLDER TAIL AREA SnPb 1.5 μ m MIN.
- 3 CUT SURFACE IS UNPLATED
- 4 GENERAL TOLERANCE : ± 0.25
- 5 APPROPRIATE HDR SHOULD BE POLARIZED AT POS. NO.20.
- ⑥ 94882-001LF PLATING CONTACT AREA Au 0.2 μ m MIN
SOLDER TAIL AREA Au Flash
- ⑦ THIS PRODUCT MEETS EUROPEAN UNION DIRECTIVES AND OTHER COUNTRY REGULATIONS AS DESCRIBED IN GS-22-008.

RECOMMENDED MOUNTING HOLE LAYOUT

mat'l. code				surface		tolerance		projection		product family		CODE
---				ISO 1302 <input checked="" type="checkbox"/>		ISO 406				5MWF - MINITEK RECEPTACLE		JP
						ISO 1101				title		
ltr				description		ecn no		dr		date		tolerances unless otherwise specified
C				REVISED		J06-0061		R.S		2/21/'06		0.X ± 0.25
D				REVISED		J06-0352		R.S		8/30/'06		0.XX ± 0.25
										0.XXX ± 0.25		mm
										scale 5:1		
						dr		R.SHOUJI		8/30/'06		dwg no
						enr		R.SHOUJI		8/30/'06		sheet 2 of 2
						chr		S. Odawa		8/31/06		size
						app		S. Odawa		8/31/06		A3
sheet index				revision sheet								type
												Product Customer Drawing
												Rev.
												D