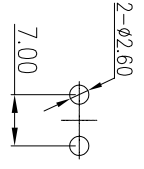
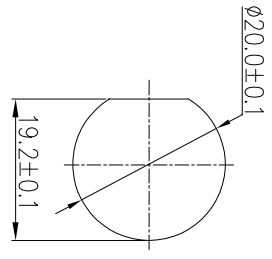


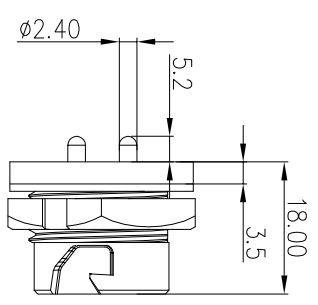
REV.	EN. NO.	DESCRIPTION	SIGN	DATE
C1	N/A	INITIAL DRAWING	Liu	2019/08/13



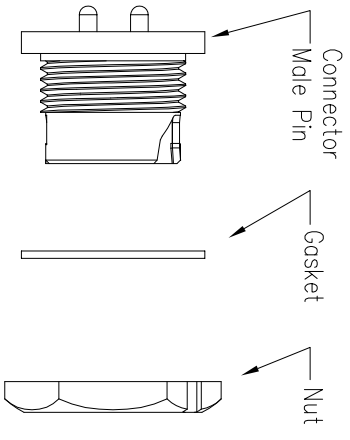
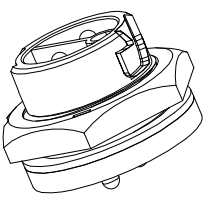
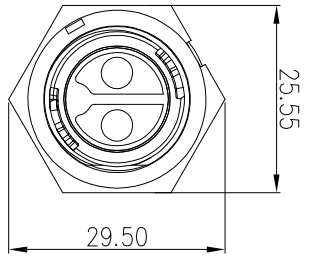
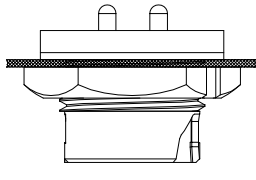
2 Pin
PCB Layout



Recommended Panel Cut-Out

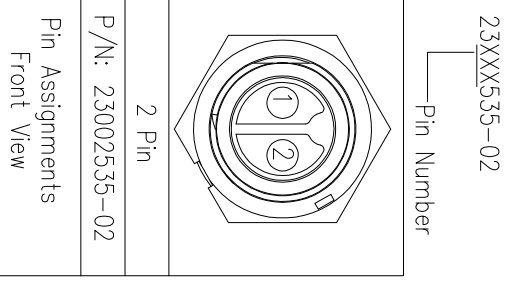


Panel T: Max 2.5



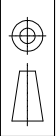
Specification:

1. Operation Temperature: -45°C~105°C.
2. Insulation Resistance: 100MΩ at DC500V.
3. Contact Resistance: <10mΩ
4. Withstand Voltage: 2000V AC
5. Operating Current: 20A
6. Operating Voltage: AC 300V
7. Waterproof Rate: IP67 (Mated)
8. Housing: Nylon, Black
9. Male Pin: Copper Alloy, Gold Plated
10. Gasket: Silicon Gray
11. Panel Nut: Nylon, Orange
12. Torque Rate: 0.8~1.0N•m
13. RoHS Compliant.
14. Mating Cap P/N: 806-00047-00



P/N: 23002535-02

Pin Assignments
Front View



UNIT: mm	
TOLERANCE	
.X	±0.25
.XX	±0.15
.XXX	±0.05
ANGLES	±1°

DESCRIPTION

Middle Series Push Lock Front
Mount With Male Pin(PCB)

SCALE	1:1	SHEET	1	OF	1
REV	C1	SIZE	A4	* : Inspection Item	

CHOGORI

PART NO 23XXX535-02

DRAWN BY Liu

DATE 2019/08/13

DWG NO

CHECKED BY M/o

DATE 2019/08/13

CUSTOMER

APPROVED BY P/INSON

DATE 2019/08/13