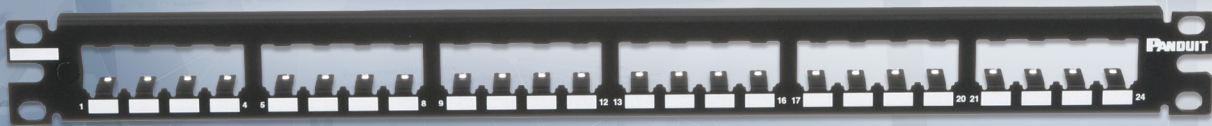


Modular Patch Panels

SELECTION GUIDE



An Extensive Selection of Patch Panels Supports Your Application

Panduit offers an extensive selection of modular patch panels, with various styles and port densities and an assortment of labeling options making them ideal for any installation. Select patch panels are available in a standard White color option.

Modular patch panels accept all Mini-Com® Modules in copper, fiber, and A/V, which snap in and out for easy moves, adds, and changes. This modular system is ideal for multimedia applications, providing flexibility to customize any installation. All patch panels mount to standard EIA 19-inch or 23-inch racks with optional extender brackets.

A variety of accessories are available to optimize the installation. Strain relief bars are recommended for all installations to properly support cables exiting the back of the panel. Covers and blank panels promote proper airflow and cooling by filling unused rack openings.

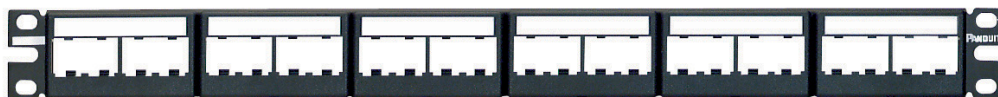
Unshielded and Shielded

Unshielded Patch Panels

Unshielded patch panels consist of a metal panel and molded snap-in faceplates. Removable faceplates on select panels allow front access to installed modules.

Available features:

- Label pockets for easy identification; designs without a label pocket accommodate optional adhesive labeling
- Standard and high density
- Flush mount and front access
- Flat, angled, and recessed designs

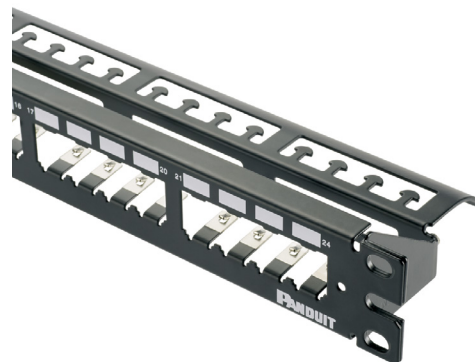


Shielded Patch Panels

Shielded patch panels are recommended for high RFI/EMI environments, where interference is a risk. Panduit's shielded offering includes integrated shielding which allows seamless integration with the Panduit® Structured Ground™ Grounding System.

Available features:

- Stainless steel construction
(48-port High Density includes a molded faceplate)
- Dedicated areas for port identification which accept adhesive labels
- Accept Mini-Com® Shielded Jack Modules
- Standard and High Density
- Flat and angled designs
- Select models include built-in strain relief bar



Style

Flat

Flat panels require horizontal cable managers to help organize and route cables into vertical managers. Extended strain relief bars are recommended to allow proper cable support.

Angled

Angled panels enable higher density by allowing cables to flow to each side of the rack, thus minimizing the need for horizontal cable managers and allowing patch cords to be routed directly into vertical cable managers. Straight strain relief bars are recommended, as closer mounting to the panel eliminates sagging and provides improved cable support.

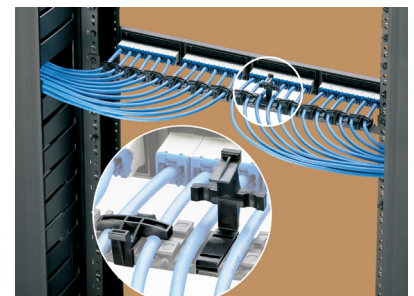
High-Density Patch Panels

High-density patch panels are an ideal solution for installations with space constraints, are available in flat and angled designs, with 48 ports in one rack space and 72 ports in two rack spaces. The angled design increases rack density, managing high-density applications in one-fourth the area needed for conventional cable management systems. (High capacity vertical managers are recommended.)

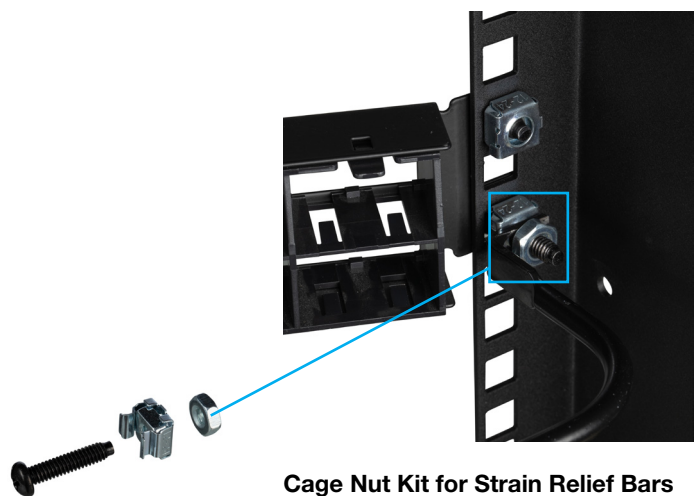
Strain Relief Bars

Strain relief bars (SRB) are used to support and manage cables in telecommunication rooms. Panduit's extensive selection offers the flexibility to fit in a variety of applications, and ranges from a simple straight bar to one with distinctive features such as integrated adjustable clips.

For single rail cabinets or racks, it is recommended to use the strain relief bar with direct patch panel mount or the cage nut kit for strain relief bars.



**Strain relief bar with direct patch panel mount
(patch panel not included)**



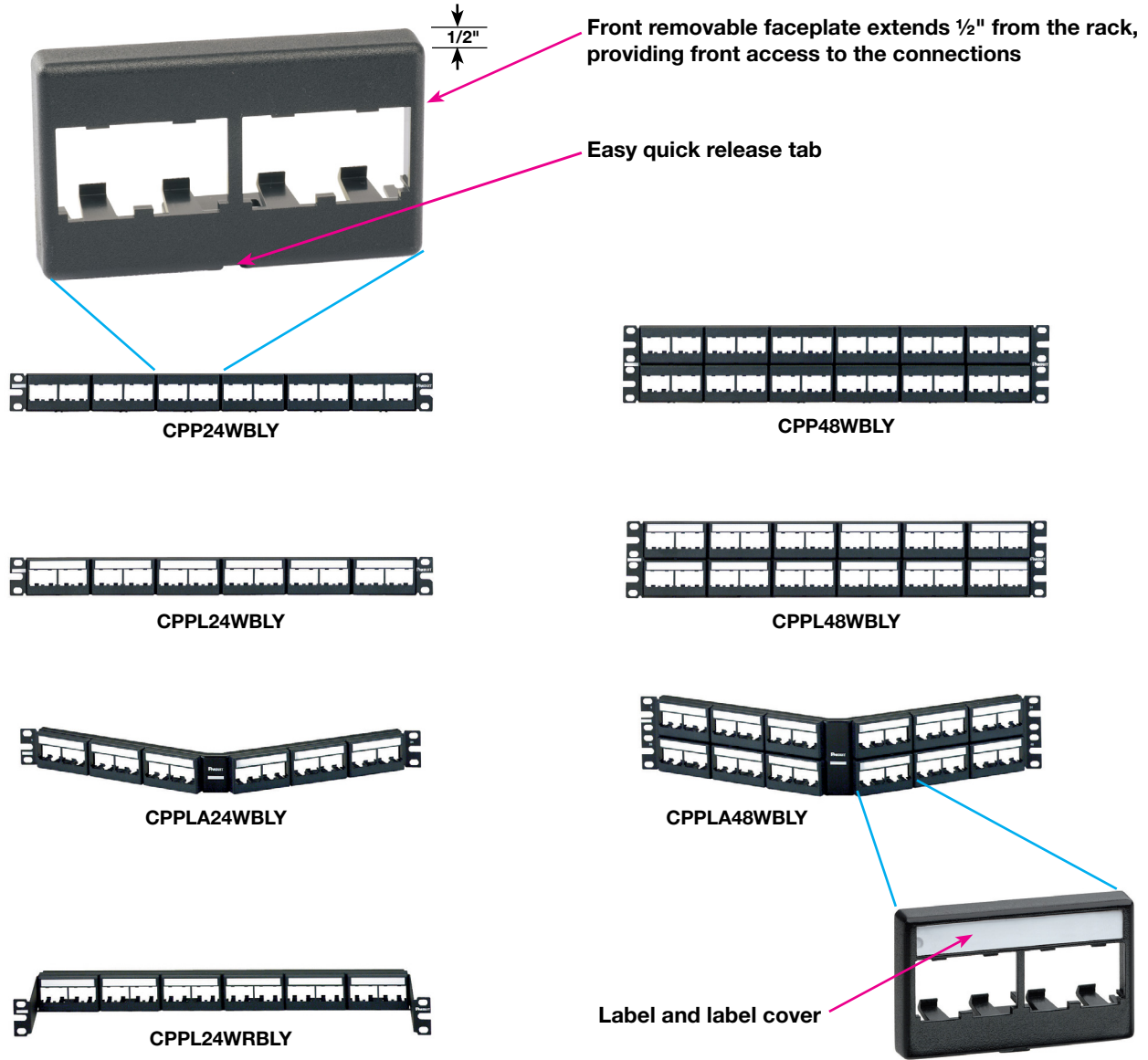
Cage Nut Kit for Strain Relief Bars

DISCLAIMER: The information contained herein is intended as a guide for use by persons having technical skill. Buyer shall determine the suitability of the Panduit product for his intended use and Buyer assumes all risk and liability whatsoever in connection therewith.

Unshielded

Front Access

- Recommended for installations where access to the back of the rack is limited
- Label feature available, includes label and cover

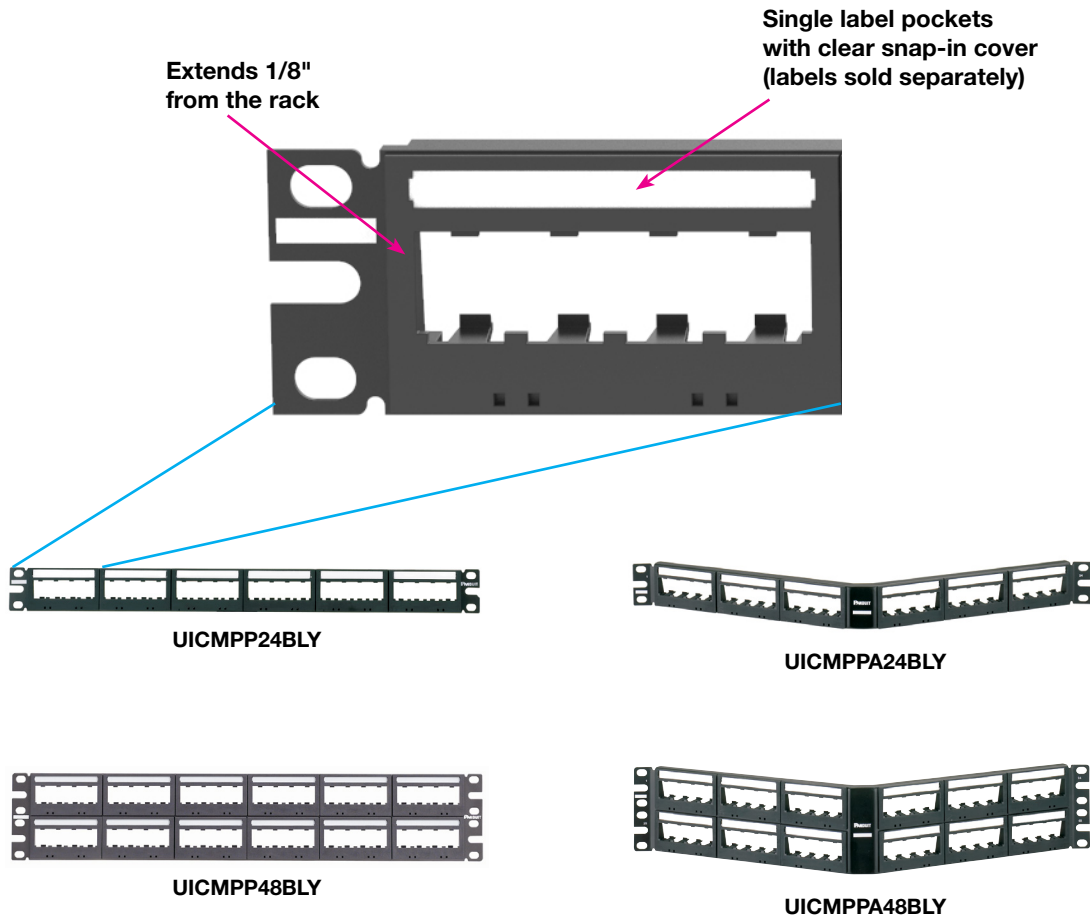


Part Number	Style	Ports	RU	Replacement Faceplate	Replacement Label	Label Type	Label Options Page 22
CPP24WBLY	Flat	24	1	CFFP4BL	—	Adhesive	A
CPP48WBLY		48	2		—		
CPPL24WBLY		24	1	CFFPL4BL	C4PPLK	Pocket	A, B
CPPL48WBLY		48	2				
CPPLA24WBLY	Angled	24	1				
CPPLA48WBLY	Angled	48	2				
CPPL24WRBLY	Recessed	24	1				

Unshielded

Ultimate ID® Patch Panels

- Recommended for installations that follow common labeling standard or where multiple labeling areas are needed
- Meet TIA-606-B labeling standards with ease

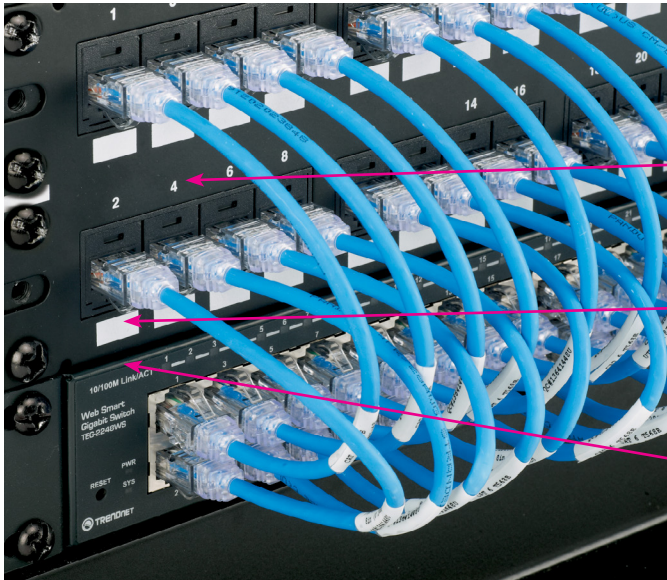


Part Number	Style	Ports	RU	Label Type	Label Options Page 22
UICMPP24BLY	Flat	24	1	Pocket	D
UICMPP48BLY		48	2		
UICMPPA24BLY	Angled	24	1		
UICMPPA48BLY		48	2		

Unshielded

Flush Mount

- Mount flush with the rack to match other product or equipment installed
- Optional vertical number sequence simplifies installation by mimicking common switch-port numbering
- Pre-printed numbers above each port
- White write-on areas for port or panel identification
- Available in white



Pre-printed numbers for easy identification

Write on areas for custom adhesive labels

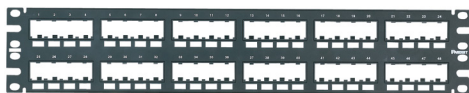
Flush mount design allows panel to align with other rack-mountable products



CPP24FMWBLY



CPPA24FMWBLY



CPP48FMWBLY



CPPA48FMWBLY

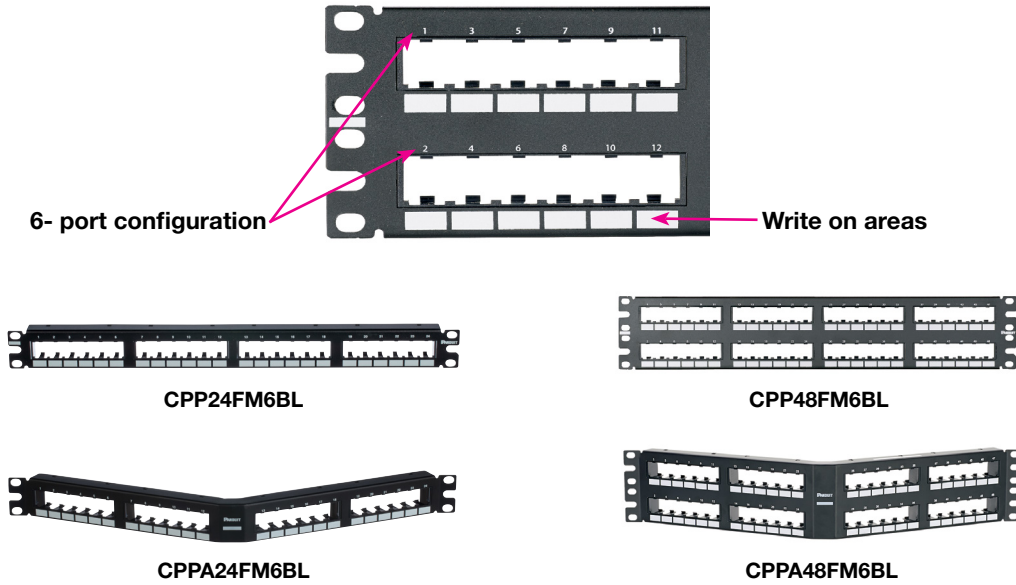
Part Number	Style	Ports	RU	Recommended SRB	Label Type	Label Options Page 22
CPP24FMWBLY	Flat	24	1	Extended	Adhesive	A
CPP48FMWBLY		48	2			
CPP48FMVNSWBLY						
CPPA24FMWBLY	Angled	24	1	Straight		
CPPA48FMWBLY		48	2			

Unshielded

6-Port Configuration

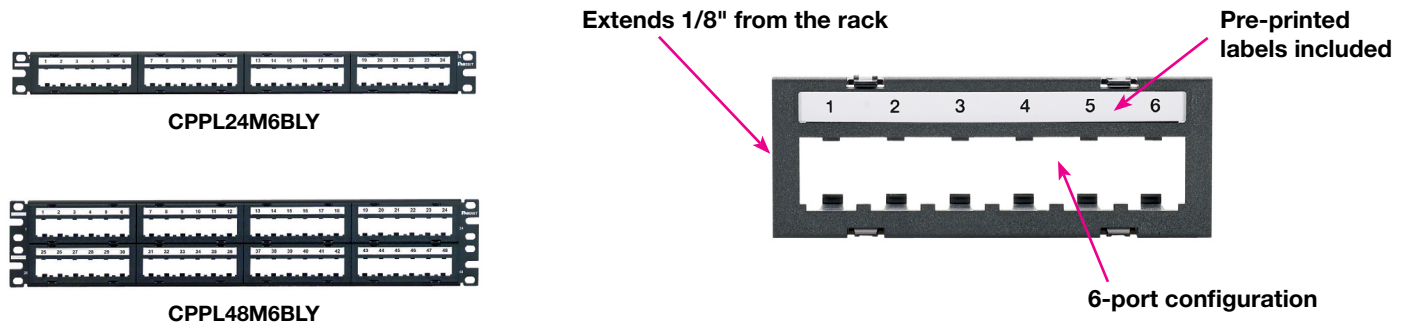
- Modules arranged in groups of six to match the layout of select switches
- Flush mount style (FM6) mounts flush with the rack to match other product or equipment installed
- Faceplate style (M6) includes label pocket with preprinted labels and cover

Flush Mount Style



Part Number	Style	Ports	RU	Label Type	Label Options Page 22
CPP24FM6BL	Flat	24	1	Adhesive	C, E
CPP48FM6BL		48	2		
CPPA24FM6BL	Angled	24	1		
CPPA48FM6BL		48	2		

Faceplate Style



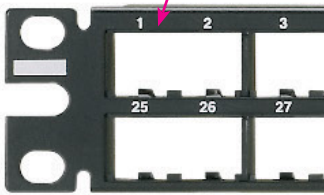
Part Number	Style	Ports	RU	Replacement Label	Label Type	Label Options Page 22
CPPL24M6BLY	Flat	24	1	C6PPLK1-24	Pocket	C, F
CPPL48M6BLY	Flat	48	2	C6PPLK1-24 C6PPLK25-48		

Unshielded

High Density

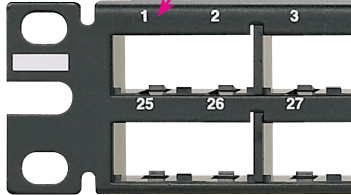
- Recommended for installations with limited real estate
- Allows up to 48 unshielded connections per rack unit
- Select part numbers available in standard White color option on page 15

Standard number sequence (no labeling)



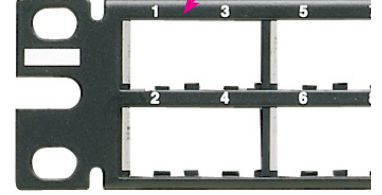
CPP48HDWBLY

Enhanced label area accepts custom adhesive labeling

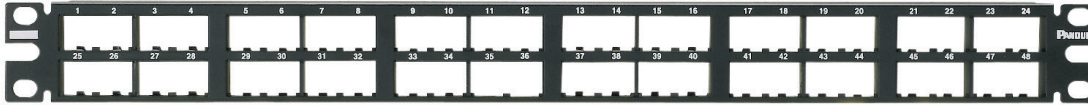


CPP48HDEWBL

Vertical number sequence mimics common switch port numbering (no labeling)



CPP48HDVNSWBL



Part Number	Style	Ports	RU	Label Type	Label Options Page 22
CPP48HDWBLY	Flat	48	1	—	—
CPP48HDEWBL				Adhesive	D
CPP48HDVNSWBL				—	—
CPPA48HDWBLY	Angled			—	—
CPPA48HDEWBL				Adhesive	D
CPPA48HDVNSWBL				—	—

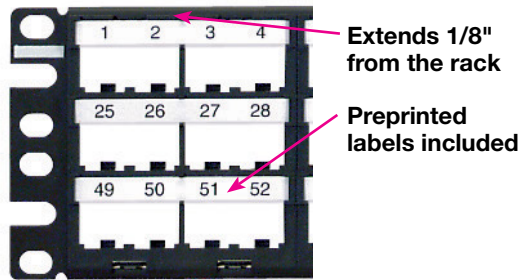
Unshielded

High Density

- Recommended for installations with limited real estate; allows up to 72 connections in 2 rack units

Faceplate Design

- Faceplate can be removed from the front of the panel, allowing easy access to the connections
- Recommended for installations with space limitation that need labeling
- Includes label pocket with labels and label covers

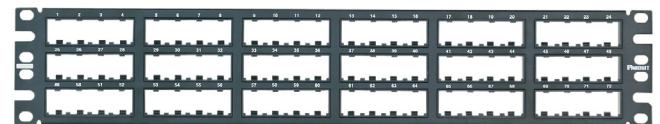
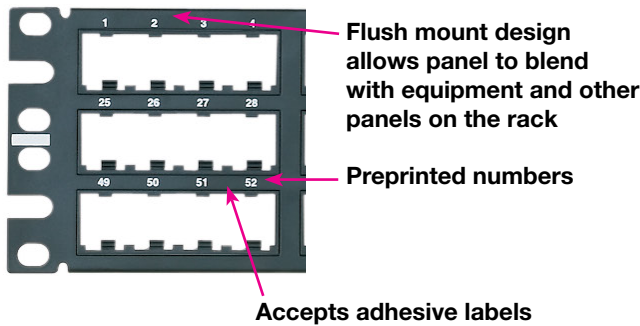


CPPL72WBLY



CPPLA72WBLY

Flush Mount Design



CPP72FMWBLY



CPPA72FMWBLY

Part Number	Style	Ports	RU	Replacement Label	Label Type	Label Options Page 22
Flush Mount Design						
CPP72FMWBLY	Flat	72	2	NA	Adhesive	D
CPPA72FMWBLY	Angled					
Faceplate Design						
CPPL72WBLY	Flat	72	2	C72PPLK	Pocket	D
CPPLA72WBLY	Angled					

Unshielded

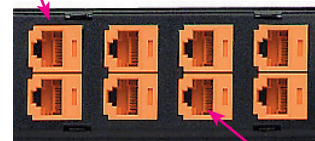
32 Port

- Recommended for installations in need of a semi-high-density panel in 1 RU



CPP32WBL

Arranged in groups of 8



Extends 1/8" from the rack

Jacks mount in 90° orientation

Part Number	Style	Ports	RU	Label Type	Label Options Page 22
CPP32WBL	Flat	32	1	Adhesive	D

Wall Mount

- Recommended for wall mount applications with limited space, when few ports are required
- Accepts custom adhesive labels
- Front access for easier access to connections



CPP12WBL (WB89D bracket not included)



Built-in mounting frame

3"

CWPP12WBL



89D bracket for use with CPP12WBL

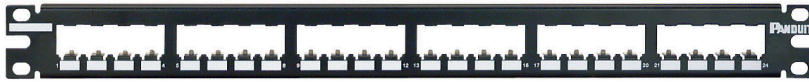
WB89D

Part Number	Style	Ports	RU	Replacement Faceplate	Label Type	Label Options Page 22
CPP12WBL	89D	12	—	CFFP4BL	Adhesive	A
CWPP12WBL	Wall Mount		—			

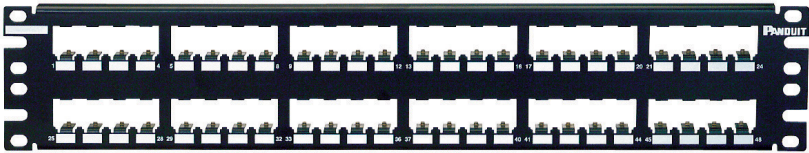
Shielded

Standard Density

- Recommended for environments with potential RFI/EMI interference
- Shielded jack module removal tool included
- White patch panel offering on page 16



CP24BLY



CP48BLY

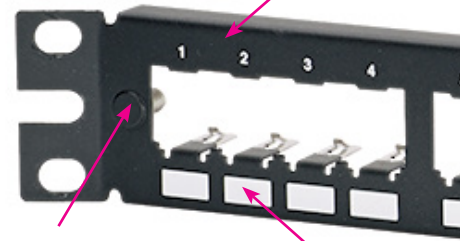


CPA24BLY



CPA48BLY

All stainless steel construction allows shielded jacks to bond directly to panels



Built in grounding lug bonds panel to rack

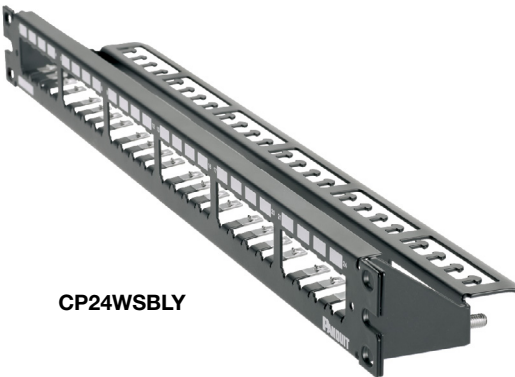
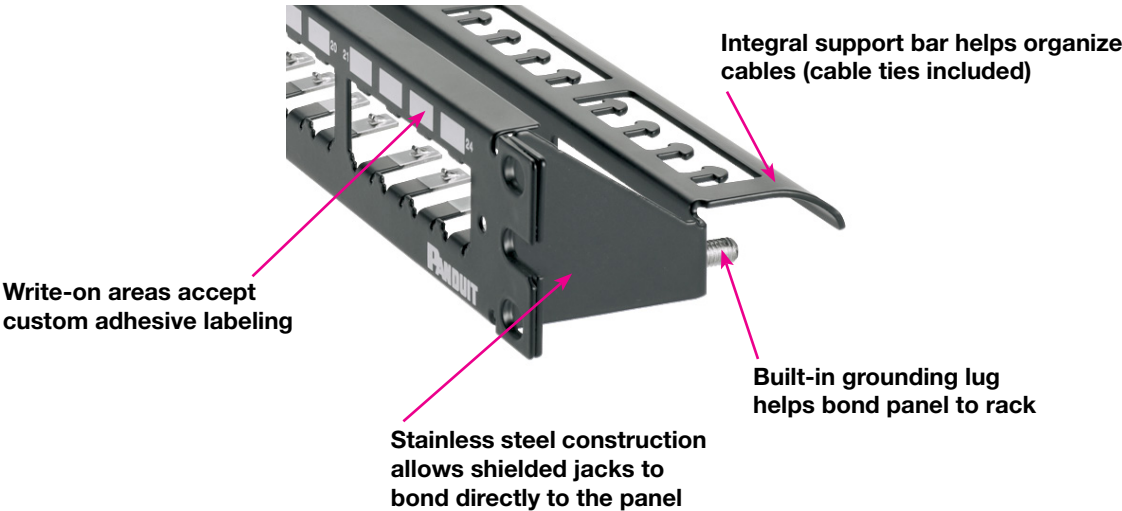
Write-on areas accept custom adhesive labeling

Part Number	Style	Ports	RU	Label Type	Label Options Page 22
CP24BLY	Flat	24	1	Adhesive	A
CP48BLY		48	2		
CPA24BLY	Angled	24	1		
CPA48BLY		48	2		

Shielded

Standard Density with Integral Support

- Recommended for environments with potential RFI/EMI interference
- Shielded jack module removal tool included

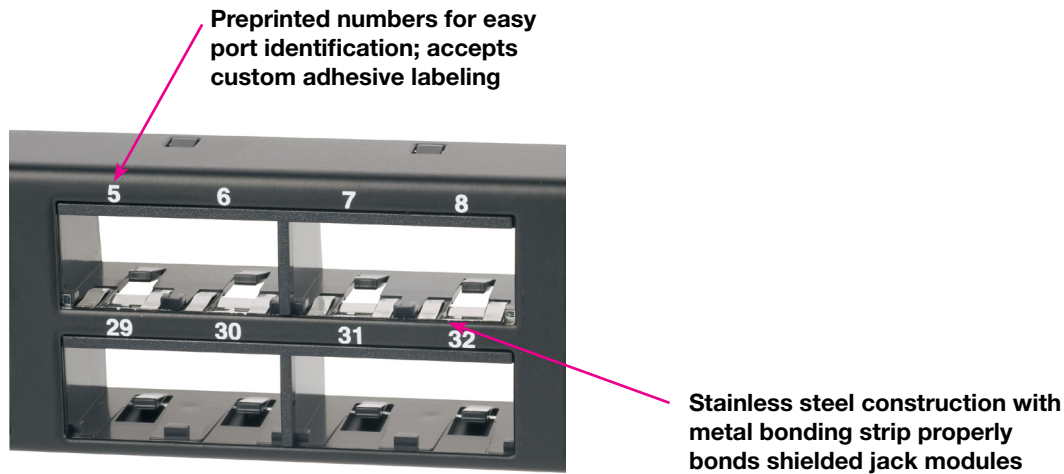


Part Number	Style	Ports	RU	Label Type	Label Options Page 22
CP24WSBLY	Flat	24	1	Adhesive	A
CP48WSBLY		48	2		

Shielded

High Density

- Recommended for installations with limited real estate and potential RFI/EMI interference
- 48 ports in 1 RU
- White patch panel offering on page 16



CP48HDBL



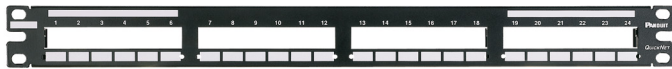
CPA48HDBL

Part Number	Style	Ports	RU	Label Type	Label Options Page 22
CP48HDBL	Flat	48	1	Adhesive	D
CPA48HDBL	Angled				

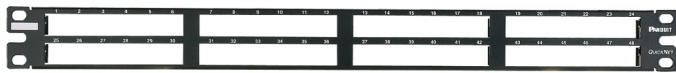
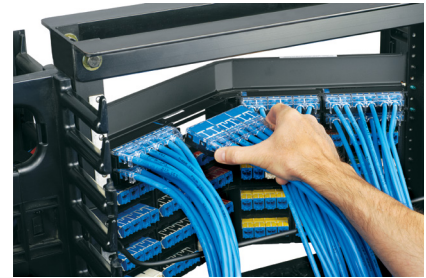
*Includes trilobular screws to properly bond the panel to the rack

QuickNet™ Patch Panels

- Designed to work with Panduit's preterminated Copper and Fiber systems
- High density available for areas with limited real estate
- For shielded or unshielded applications
- Select part numbers available in standard White color option on page 17



QPP24BL
QSP24BL^



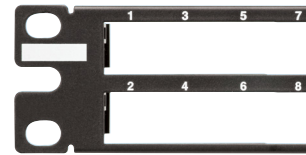
QPP48HDBL
QPP48HDVNSBL**
QSP48HDBL^



QAPP24BL
QASP24BL^



QAPP48HDBL
QAPP48HDVNSBL**
QASP48HDBL^



****Vertical numbering sequence**

Part Number	Style	Ports	RU	Label Type	Label Options Page 22
QPP24BL	Flat	24	1	Adhesive/ QPPLC24	C, E
QSP24BL^				Adhesive/ QPPLC24	
QPP48HDBL		48		—	—
QPP48HDVNSBL				—	—
QSP48HDBL^				—	—
QAPP24BL	Angled	24	Adhesive/ QPPLC24	C, E	
QASP24BL^			Adhesive/ QPPLC24		
QAPP48HDBL		48	—	—	
QAPP48HDVNSBL			—	—	
QASP48HDBL^			—	—	

^Shielded

White Patch Panels

Standard Unshielded



CPP24FMWWH



CPP48FMWWH



CPPA24FMWWH



CPPA48FMWWH

Part Number	Style	Ports	RU	Recommended SRB's	Label Type	Label Options Page 22
CPP24FMWWH	Flat	24	1	Extended	Adhesive	A
CPP48FMWWH		48	2			
CPPA24FMWWH	Angled	24	1	Straight		
CPPA48FMWWH		48	2			

High Density Unshielded



CPP48HDWWH



CPP48HDEWWH



CPPA48HDWWH

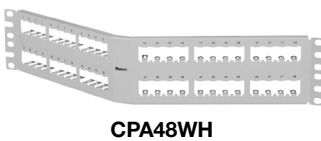
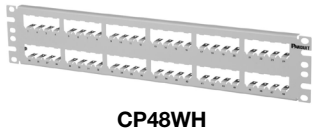


CPPA48HDEWWH

Part Number	Style	Ports	RU	Recommended SRB's	Label Type	Label Options Page 22
CPP48HDWWH	Flat	48	1	Extended	—	—
CPP48HDEWWH					ADH	D
CPPA48HDWWH	Angled			Straight	—	—
CPPA48HDEWWH					ADH	D

White Patch Panels

Standard Shielded



Part Number	Style	Ports	RU	Label Type	Label Options Page 22
CP24WH	Flat	24	1	Adhesive	A
CP48WH		48	2		
CPA24WH	Angled	24	1		
CPA48WH		48	2		

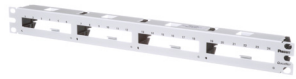
High Density Shielded



Part Number	Style	Ports	RU	Label Type	Label Options Page 22
CP48HDWH	Flat	48	1	Adhesive	D
CPA48HDWH	Angled				

White Patch Panels

Quick-Net™ Patch Panels



QPP24WH



QSP24WH



QPP48HDWH



QPP48HDVNSWH



QSP48HDWH



QAPP24WH



QASP24WH



QAPP48HDWH



QAPP48HDVNSWH



QASP48HDWH

Part Number	Style	Ports	RU	Recommended SRB's	Label Type	Label Options Page 22	
QPP24WH	Flat	24	1	Extended	Adhesive/ QPPLC24	C, F	
QSP24WH^							
QPP48HDWH		48					
QPP48HDVNSWH							—
QSP48HDWH^							—
QAPP24WH		Angled					24
QASP24WH^							
QAPP48HDWH	48						
QAPP48HDVNSWH			—				
QASP48HDWH^			—				

^Shielded

Accessories



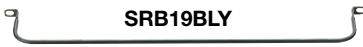
SRBS19BL-XY



SRBWCY



SRBM19BLY



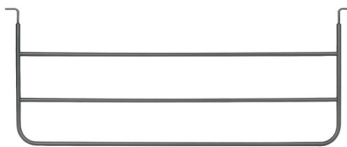
SRB19BLY



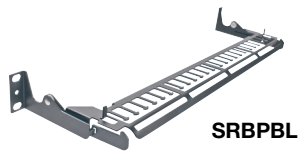
SRB19D5BL



SRB19D7BL



SRB19MDBL



SRBPBL



SRBPPQBRKT

Strain Relief Bars

Straight

SRBS19BL-XY	Straight strain relief bar. Package of 10.
SRBWCY	Straight strain relief bar with clips
SRBM19BLY	Straight strain relief bar with Tak-Ty® Hook & Loop Cable Ties

Extended

SRB19BLY	Extended strain relief bar – 2.8"
SRB19D5BL	Extended strain relief bar – 4.5"
SRB19D7BL	Extended strain relief bar – 7.6"
SRB19MDBL	Extended multi-depth strain relief bar – 7"
SRBPBL	Extended pivoting strain relief bar
SRBPPQBRKT	Direct mount PP strain relief bar

Accessories



SRBBRKT



CNSRBKIT-C



CPATCBL



CPAF1BLY



CPAF2BLY

Strain Relief Bars

Quick Release Bracket Kits

SRBBRKT	Quick release brackets
CNSRBKIT-C	Cage nut rail kit for strain relief bars

Angled Covers

CPATCBL	Transitional cover
CPAF1BLY	Blank angled cover – 1 RU
CPAF2BLY	Blank angled cover – 2 RU

Accessories (continued)



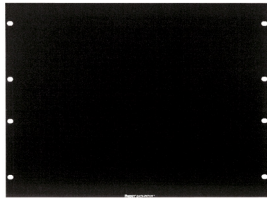
DPFP1



DPFP2



DPFP4



DPFP8



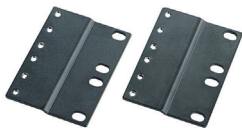
TLBP1S-V, TLBP1R-V



TLBP2S-V, TLBP2R-V



PEB1



PEB2

Flat Covers

DPFP1	Blank flat cover — 1 RU
DPFP2	Blank flat cover — 2 RU
DPFP4	Blank flat cover — 4 RU
DPFP8	Blank flat cover — 8 RU

Tool-Less Blanking Panels

TLBP1S-V	For 3/8" cage nut holes — 1 RU
TLBP2S-V	For 3/8" cage nut holes — 2 RU
TLBP1R-V	For tapped rails — 1 RU
TLBP2R-V	For tapped rails — 2 RU

Extender Brackets

PEB1	Converts 19" panels to 23" panels — 1 RU
PEB2	Converts 19" panels to 23" panels — 2 RU

Mounting Screws

	Standard	Bonding Green	Bonding Black
Imperial size #12-24 x 0.5" round head	S1224-C	RGTBSG-C	RGTBS-C
Metric size #M6-1.0mm x 0.15mm	SCREWM6-C	RGTBSM6G-C	—
M6 screw with cage nut	CNWSM6-C	—	—

White Patch Panel Accessories

Accessories



CPATCWH



CPAF1WH



CPAF2WH



DPFP1WH



DPFP2WH

CPATCWH	Transitional Cover
CPAF1WH	Blank angled cover - 1 RU
CPAF2WH	Blank angled cover - 2 RU
DPFP1WH	Blank flat cover - 1 RU)
DPFP2WH	Blank flat cover - 2 RU

Labeling



TDP43ME

Part Number	Description
TDP43ME	300 dpi printer; includes printer, Panduit® Easy-Mark™ Labeling Software, RMEH4BL hybrid black ribbon, AC power adapter with US power cord, USB cable, user manual, quick start card, and driver disk.



MP300

Part Number	Description
MP300	Includes MP300 printer, one (1) cassette of S100X150VAM self-laminating labels, rechargeable Li-ion Battery Pack, hard carrying case, AC power adapter, USB cable, magnetic attachments and quick reference card.

Labeling (continued)

Labeling Options			
	Laser/Ink	Laser/InkJet	MP300
A	C252X030YPT	C252X030FJJ	—
B	C261X035Y1T	C261X035Y1J	C261X035Y1M
C	T031X000FJT	—	—
D	T024X000FJT	—	T024X000FJM-BK
E	C379X030YPT	C379X030FJJ	—
F	C390X030Y1T	C390X030Y1J	—

 denotes Adhesive labels

Consult Label Selector at www.panduit.com for additional options

Modular Patch Panels - Unshielded

Ports	Part Number	Recommended Labels
24	CPP24WBLY	A
	CPPL24WBLY	A, B
	CPPL24M6BLY	C
	CPPL24WRBLY	A, B
	CPP24FMWBLY*	A
	CPPA24FMWBLY*	A
	CPPLA24WBLY	A, B
	CPP24FM6BL	C, E
	CPPA24FM6BL	C, E
	UICMPP24BLY	D
	UICMPPA24BLY	D
48	CPP48WBLY	A
	CPPL48WBLY	A, B
	CPPL48M6BLY	C
	CPP48FMWBLY*	A
	CPPA48FMWBLY*	A
	CPPLA48WBLY	A, B
	CPP48HDWBLY*	—
	CPP48HDEWBL*	D
	CPP48FM6BL	C, E
	CPPA48FM6BL	C, E
	CPP48HDVNSWBL	—
	CPPA48HDWBLY*	—
	CPPA48HDEWBL*	D
	CPPA48HDVNSWBL	—
	UICMPP48BLY	D
UICMPPA48BLY	D	
MISC	CPPL72WBLY	D
	CPPLA72WBLY	D
	CPP32WBLY	D
	CWPP12WBL	A, B
	CPP12WBL	A, B
	CPP72FMWBLY	D
CPPA72FMWBLY	D	

* Available in White

Modular Patch Panels - Shielded

Ports	Part Number	Recommended Labels
24	CP24BLY*	A
	CP24WSBLY	
	CPA24BLY*	
48	CP48BLY*	D
	CPA48WSBLY	
	CPA48BLY*	
	CP48HDBL*	
	CPA48HDBL*	

* Available in White

Quicknet patch panels*

Ports	Part Number	Recommended Labels
Unshielded:		
24	QPP24BL	C, E
	QAPP24BL	
48	QPP48HDBL	—
	QAPP48HDBL	
	QPP48HDVNSBL	
	QAPP48HDVNSBL	
Shielded:		
24	QSP24BL	C, E
	QASP24BL	
48	QSP48HDBL	—
	QASP48HDBL	

* Available in White



PANDUIT®

Panduit Corp.
World Headquarters
Tinley Park, IL 60487

cs@panduit.com
US and Canada: 800.777.3300
Europe, Middle East, and Africa:
44.20.8601.7200
Latin America: 52.33.3777.6000
Asia Pacific: 65.6305.7575

www.panduit.com