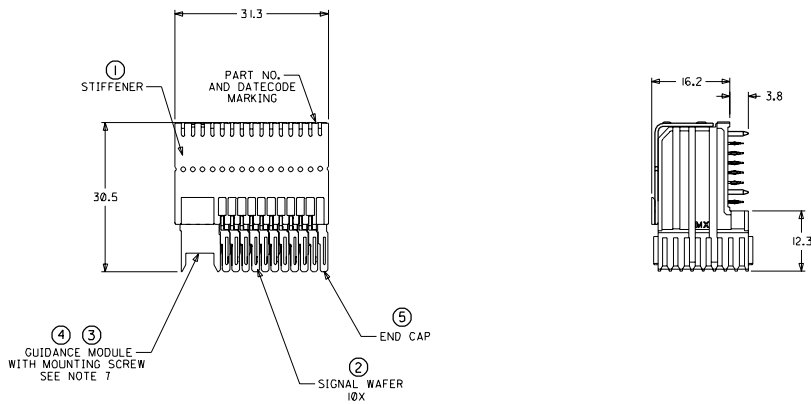
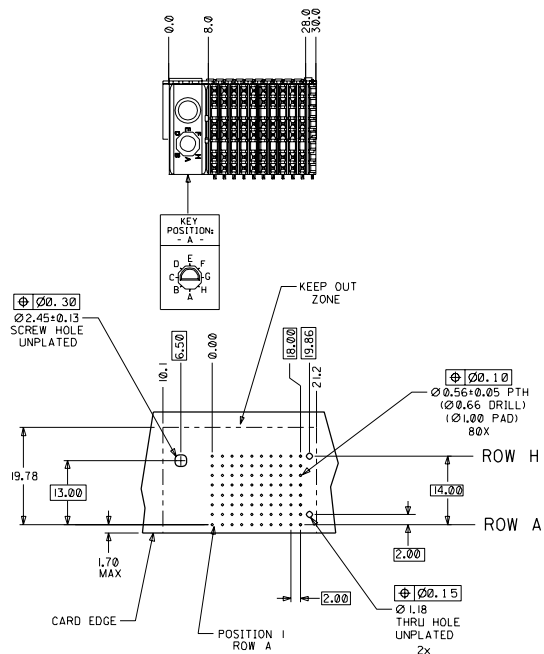


CUSTOMER: LAUREL NETWORKS.



NOTES: (UNLESS OTHERWISE SPECIFIED)

- MATERIALS: HOUSING - LIQUID CRYSTAL POLYMER (LCP), GLASS-FILLED, UL94V-0, BLACK.
TERMINALS - HIGH PERFORMANCE COPPER ALLOY.
STIFFENER - STAINLESS STEEL.
- FINISH: SELECTIVE GOLD (Au) IN CONTACT AREA, 0.00076mm MINIMUM THICKNESS; SELECTIVE TIN/LEAD (Sn/Pb) ON PCB TAILS, NICKEL (Ni) OVERALL.
- REFER TO MOLEX PRODUCT SPECIFICATION PS-74031-999 FOR PERFORMANCE SPECIFICATIONS.
- REFER TO MOLEX DOCUMENT SD-74681-002 FOR ADDITIONAL DETAIL ON THE HSD SIGNAL WAFER.
- REFER TO MOLEX DOCUMENT SD-74037-006 FOR ADDITIONAL DETAIL ON THE GUIDANCE MODULE.
- REFER TO MOLEX DOCUMENT SD-74026-002 FOR ADDITIONAL DETAIL ON THE POWER MODULE.
- MOUNTING SCREWS WILL BE BAGGED WITH EACH CONNECTOR.
- PARTS ARE PACKAGED IN TUBES PER PK-70873-5041.



DAUGHTERCARD HOLE PATTERN
(CONNECTOR SIDE)

ITEM	PART NUMBER	DESCRIPTION	QTY
1	74046-0031	STIFFENER	1
2	74681-0001	HSD8 WAFER	10
3	74037-8001	POLARIZING/GUIDE MODULE	1
4	73726-0000	GUIDE MODULE MNTG SCREW	1
5	74038-1002	END CAP w/PEGS	1

INITIAL RELEASE	QUALITY SYMBOLS	GENERAL TOLERANCES: UNLESS SPECIFIED	SCALE		DESIGN UNITS	DIMENSIONS:		SHT	REV
			2:1	1:1		mm	INCH		
EC NO. UDT2002-0031 DRAWN: ATP 01/07/09 CHKD: LAURX 01/07/09 APPR: BIXLER 01/07/09	MAJOR CRITICAL		mm	INCH	DRAWN BY & DATE ATP 01/07/09	THIRD ANGLE PROJECTION			REVISE ON CAD ONLY
					CHECKED BY & DATE LAURX 01/07/09	TITLE: 8 ROW HSD DAUGHTERCARD ASSEMBLY SALES DRAWING			
					APPROVED BY & DATE BIXLER 01/07/09	MATERIAL NO. 746800015			
					CAD FILENAME SD-74680-015	DRAWING NO. SD-74680-015			SHEET NO. 1 OF 1
					DRAFT WHERE APPLICABLE MUST REMAIN WITHIN DIMENSIONS		THIS DRAWING CONTAINS INFORMATION THAT IS PROPRIETARY TO MOLEX INCORPORATED AND SHOULD NOT BE USED WITHOUT WRITTEN PERMISSION.		SIZE D