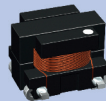
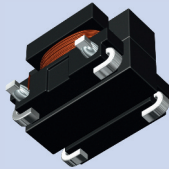
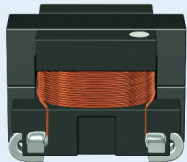


EPCOS Sample Kit 2015

SMT Current Sense Transformers

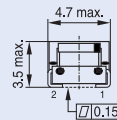
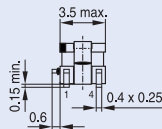
EE 4.2 Core Series – B82801A



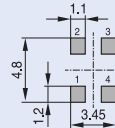
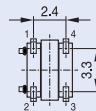
Current Sense Transformers - EE 4.2 Core (SMT)

Turns ratio	Np : Ns	1 : 20	1 : 30	1 : 40	1 : 50	1 : 60
L _{min}	μH	33	74	132	205	295
Voltage-time product	V*μs	5.76	8.6	11.5	14.4	17.3
Ordering code	B82801	A0333A020	A0743A030	A0134A040	A0214A050	A0304A060
Turns ratio	Np : Ns	1 : 70	1 : 100	1 : 125	1 : 150	
L _{min}	μH	400	820	1280	1840	
Voltage-time product	V*μs	20.0	28.8	36.0	43.2	
Ordering code	B82801	A0404A070	A0824A100	A0135A125	A0185A150	

- All values measured at +25 °C ambient temperature
- Frequency range: 50 kHz ... 1 MHz
- Sensed current: The max. primary current of 7 A causes approx. +40 °C temperature rise
- Operating temperature range: -40 °C ... +125 °C
- Tape and reel packing: 12 mm blister tape, 178 mm reel
- Packing units: 600 pcs./reel; 3000 pcs./carton



Recommended PCB layout
(Top View)



IND1140-W-E

1:20

1:30

1:40

1:50

1:60

1:70

1:100

1:125

1:150

Important information: It is incumbent on the customer to check and decide whether a product is suitable for use in a particular application. Our products are described in detail in our data sheets. Our *Important notes* and the product-specific *Cautions and warnings* must be observed. All relevant information is available through our sales offices.