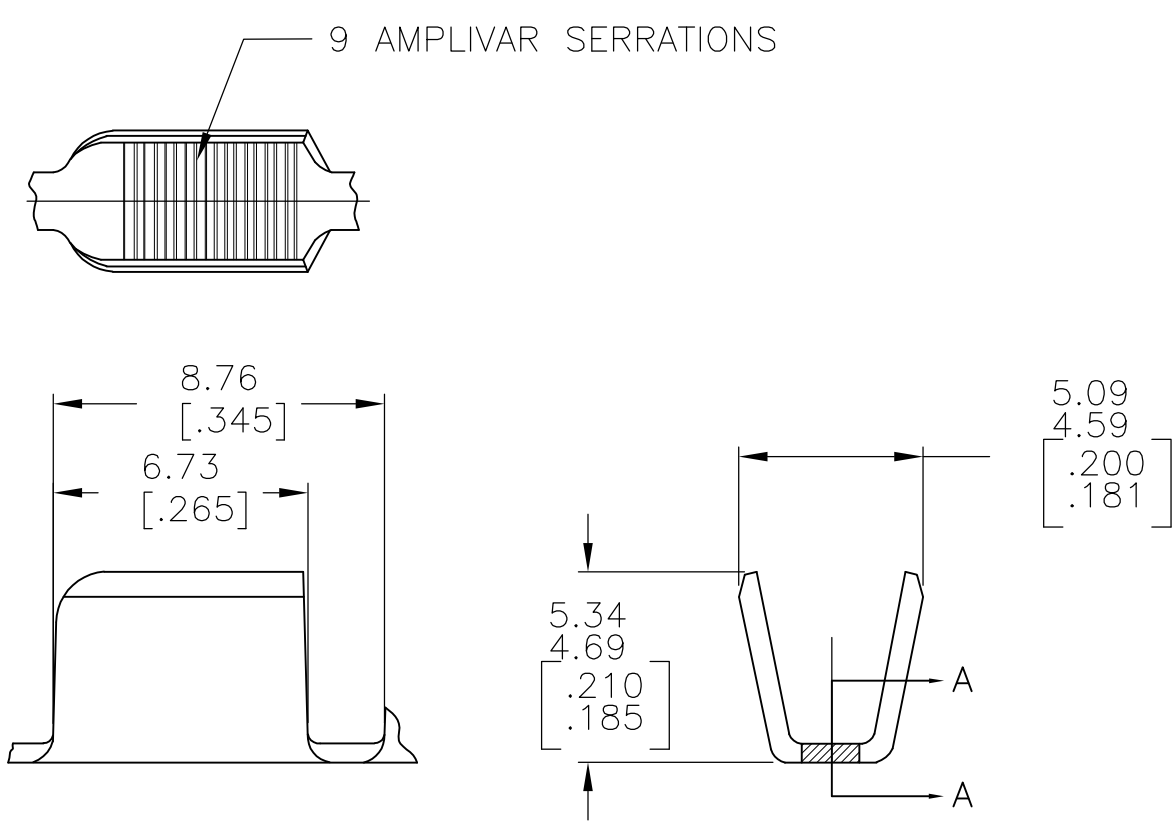


THIS DRAWING IS UNPUBLISHED. RELEASED FOR PUBLICATION  
 © COPYRIGHT - By - ALL RIGHTS RESERVED.

LOC	DIST	REVISIONS					
AF	50	P	LTR	DESCRIPTION	DATE	DWN	APVD
			E6	REVISED PER ECR-18-001998	14FEB2018	BW	KR

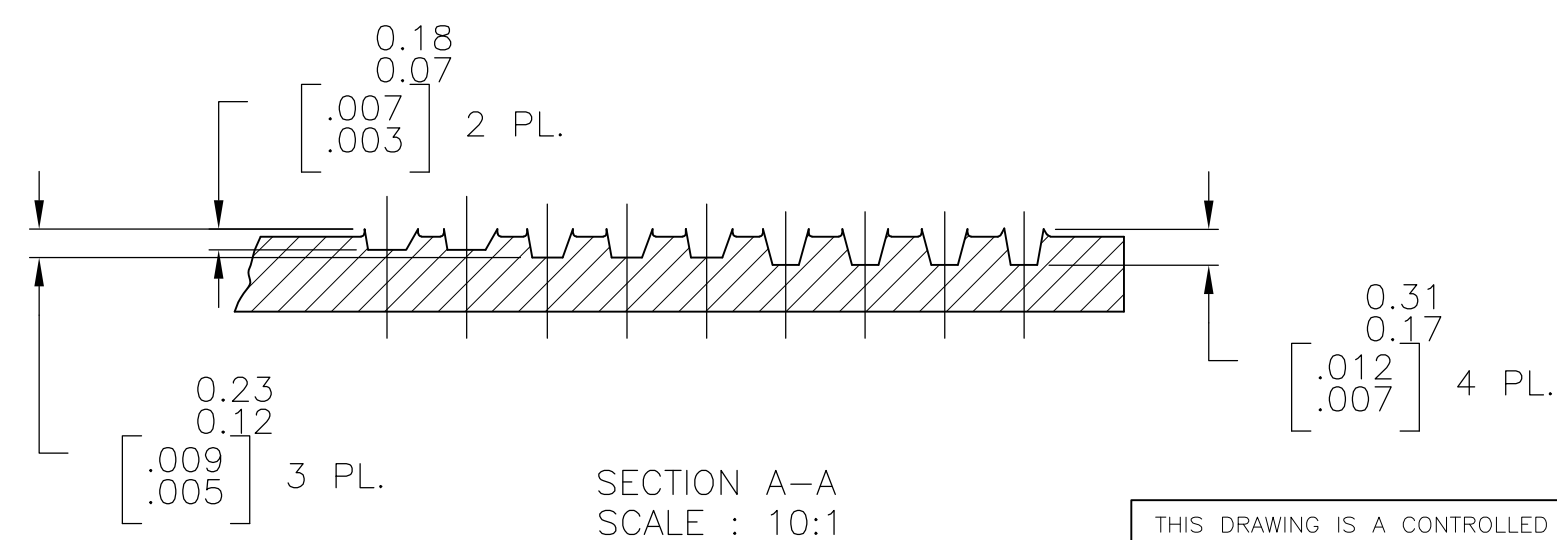


1. PRODUCT PROVIDED IN STRIP FORM ON REELS; BREAKS MAY BE PRESENT.
2. DIMENSIONS IN BRACKETS ARE IN INCHES.
3. CRIMP WIDTH: .140 F (AMPLIVAR TYPE)  
 CRIMP HEIGHT (±.002)=(TOTAL CMA+14,600)/243,900  
  
 CRIMP WIDTH: .180 F (AMPLIVAR TYPE)  
 CRIMP HEIGHT (±.002)=(TOTAL CMA+15,000)/286,000

GENERAL APPLICATION GUIDELINES MUST BE FOLLOWED AS SPECIFIED IN CATALOG #82221  
 FOR APPLICATOR INFORMATION CALL: 1-800-722-1111  
 FOR PRODUCT INFORMATION CALL: 1-800-522-6752

**4** THIS PRODUCT IS APPROVED FOR USE AS A BUSSED TERMINATION PER BELOW.  
 REFER TO APPLICATION SPEC 114-2003 REV F OR LATER FOR DETAILS

CRIMP WIDTH: .180 F (AMPLIVAR TYPE) ONLY  
 CRIMP HEIGHT (±.002) = (TOTAL CMA + 15,000) / 286,000  
 CMA RANGE: 3000 - 5000 ONLY  
 SAME MAGNET WIRE SIZE AND TYPE ONLY RECOMMENDED  
 CONTACT TE ENGINEERING FOR SPECIAL APPLICATIONS



62308-2  
 PART NO

THIS DRAWING IS A CONTROLLED DOCUMENT.		DWN RAGHAVENDRA 30JAN06	<b>STE</b> TE Connectivity	
DIMENSIONS: mm [INCHES]		CHK G.D.PORTA		
TOLERANCES UNLESS OTHERWISE SPECIFIED:		APVD G.D.PORTA	NAME	
0 PLC ± -		PRODUCT SPEC 108-32030	SPLICE, AMPLIVAR	
1 PLC ± -		APPLICATION SPEC 114-2003 <b>4</b>	3000-7000 CMA	
2 PLC ± 0.38[.015]		SIZE A3	CAGE CODE 00779	DRAWING NO C-62308
3 PLC ± -		WEIGHT -	RESTRICTED TO -	
4 PLC ± -		CUSTOMER DRAWING		
ANGLES ± 1°		SCALE 5:1	SHEET 1 OF 1	REV E6
MATERIAL REF 0.51±0.03 [.020±.001] BRASS		FINISH TIN PL.		