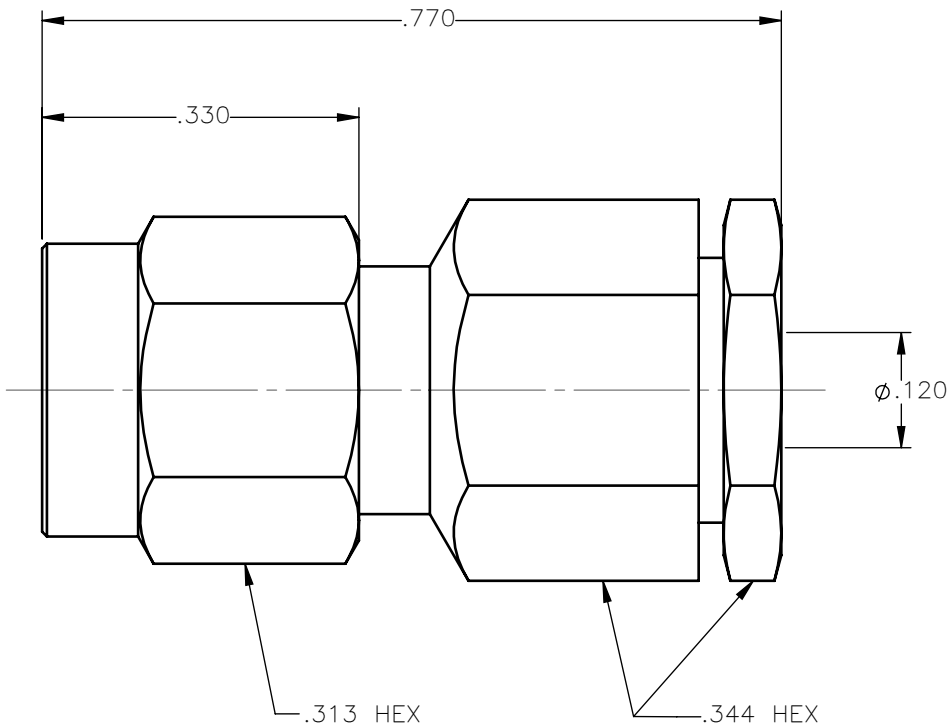


REVISIONS			
REV.	DESCRIPTION	DATE	APPROVED
A	INITIAL RELEASE	03/31/15	N.D.





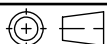
NOTES:

MATERIALS:

1. BODY & COUPLING NUT = STAINLESS STEEL PER ASTM A582, ALLOY 303, CONDITION "A".
2. INSULATORS = VIRGIN WHITE TEFLON PER ASTM D1710, GRADE 1, TYPE I, CLASS "B".
3. CONTACT & RETAINING RING = BERYLLIUM COPPER PER ASTM B196, ALLOY C17300, TEMPER TD04.
4. SOLDER FITTING & COMPRESSION NUT = BRASS PER ASTM B16, ALLOY C36000, TEMPER H02.
5. GASKET = SILICONE RUBBER PER ZZ-R-765, CLASS 2B, GRADE 65-75.

FINISHES:

1. SOLDER SLEEVE & COMPRESSION NUT = GOLD PLATE PER ASTM B488-01, TYPE II, 30μin MIN, GRADE C OVER 100 TO 200μin COPPER STRIKE PER MIL-C-14550.
2. CONTACT = GOLD PLATE PER ASTM B488-01, TYPE II, 50μin MIN, GRADE C, OVER 100 TO 200μin STRESS FREE SULFAMATE NICKEL PER QQ-N-290.
3. BODY = GOLD PLATE PER ASTM B488-01, TYPE II, 30μin MIN, GRADE C, OVER 50 TO 100μin STRESS FREE NICKEL PER QQ-N-290.
4. COUPLING NUT = PASSIVATE PER SAE-AMS-2700

UNLESS OTHERWISE SPECIFIED DIMENSIONS ARE IN INCHES TOLERANCES ON	DWN:	DATE		Property of Radiall			
	N.D.	03/31/15		This document cannot be reproduced or communicated to a third party without prior written permission of RADIALL.			
DECIMAL	ANGLE	CHKD:	DATE	SMA STRAIGHT PLUG CLAMP TYPE FOR .086 S/R CABLE			
		D.N.	03/31/15				
		APVD:	DATE	SIZE	FSCM NO.	DWG NO.	REV
		J.M.	03/31/15	A	19505	9501-1593-010	A
REFERENCE:	MATERIALS AND FINISHES:		SCALE	THIRD ANGLE PROJECTION		SHEET 1 OF 1	
ORIGINATED: N.D. DATE: 03/31/15	SEE NOTES		5:1				

9501-1593-010