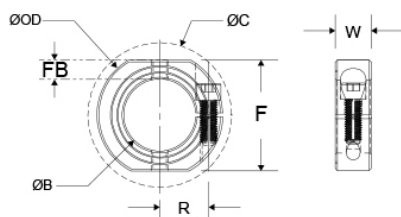




OF-MCL-12E-F

Ruland OF-MCL-12E-F, 0.7500" International Shaft Collar With OD Flats And Holes, Black Oxide Steel, One-Piece Clamp Style, 40mm OD, 15mm width



*Additional hardware NOT included

Description

Ruland OF-MCL-12E-F is a one-piece shaft collar with a 0.7500" bore, 40mm OD, and 15mm width. It is an international series shaft collar that has metric hardware and dimensions with inch bores. OF-MCL-12E-F has OD flats and tapped holes for mounting shaft collars to each other or adjacent components. The clamp style design does not mar the shaft, is easy to remove, and is indefinitely adjustable. OF-MCL-12E-F is commonly used for guiding, spacing, stopping, mounting, and component alignment. Equipment manufacturers benefit from the tightly controlled face to bore perpendicularity (TIR of ? .05mm). Perpendicularity is critical for alignment when the shaft collar is used as a load bearing face, mechanical stop, or for mounting components such as gears or bearings. Proprietary processes have been developed by Ruland to maintain superior fit, finish, and holding power. OF-MCL-12E-F is stamped with the Ruland name and bore size for ease of identification. Forged screws test beyond DIN 912 12.9 standards to ensure maximum holding power. OF-MCL-12E-F is machined from solid bar stock to a fine burr free finish and sourced exclusively from North American mills. Ruland uses 1215 lead-free steel with a proprietary black oxide finish that produces a fine glossy finish while increasing holding power and resisting corrosion. It is RoHS3 and REACH compliant and manufactured in our Marlborough, MA factory under strict controls using proprietary processes.

Product Specifications

Bore (B)	0.7500 in	Bore Tolerance	+0.0020 in / +0.0005 in (+0.050 mm / + 0.012 mm)
Outer Diameter (OD)	40 mm	Clearance Diameter (C) MAX	47.4 mm
Width (W)	15 mm	Width Tolerance	+0.076 mm / -0.254 mm
Threaded Mounting Hole	M6	Distance Across Flats (F)	36 mm
Flat to Bore FB	8 mm	Forged Clamp Screw	M6 x 16
Screw Material	Alloy Steel	Hex Wrench Size	5.0 mm
Screw Finish	Black Oxide	Seating Torque	16 Nm
Screw Location (R)	14.73 mm	Number of Screws	1 ea
Material Specification	1215 Carbon Steel Bar	Temperature	-40°F to 350°F (-40°C to 176°C)
Finish Specification	Hot Process Black Oxide, Impregnated with Naphthenic Oil, Centrifugally Dried	Manufacturer	Ruland Manufacturing
Country of Origin	USA	Weight (lbs)	0.217900
UPC	634529290859	Tariff Code	8483.60.8000
UNSPC	31162811		
Note 1	Performance ratings are for guidance only. The user must determine suitability for a particular application.		
Note 2	Additional mounting hardware not included.		
Prop 65	<p>⚠️WARNING This product can expose you to the chemical Ethylene Thiourea, known to the State of California to cause cancer and birth defects or other reproductive harm. For more information go to www.P65Warnings.ca.gov.</p>		

Installation Instructions

1. Use the OF-MCL-12E-F international series shaft collar as it is received.
2. Wipe the bore clean.
3. Apply a thin coat of light oil to the shaft.
4. Place the collar onto the desired shaft location and tighten it using a 5.0 mm hex wrench until a slight resistance is felt.
5. Wring collar into its final position and tighten the screw to the full recommended seating torque of 16 Nm using a 5.0 mm torque wrench.