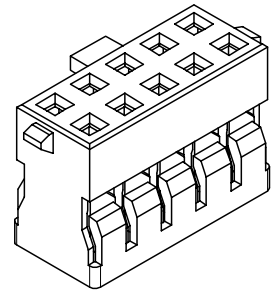
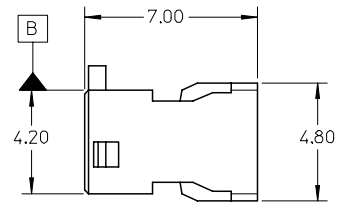
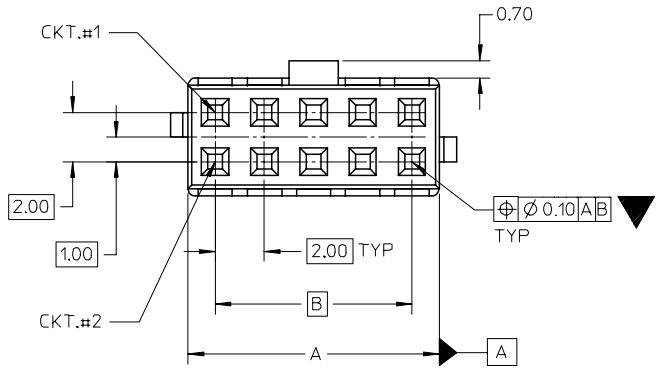
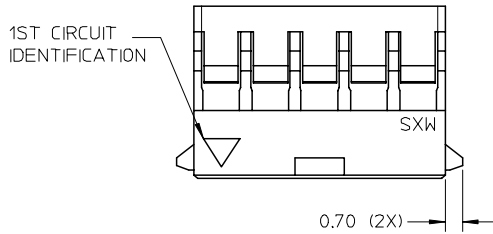


10 9 8 7 6 5 4 3 2 1

| PART NUMBER | CKT SIZE | A | B |
|-------------|----------|-------|-------|
| 78045-0460 | 4 | 4.20 | 2.00 |
| 78045-0660 | 6 | 6.20 | 4.00 |
| 78045-0860 | 8 | 8.20 | 6.00 |
| 78045-1060 | 10 | 10.20 | 8.00 |
| 78045-1260 | 12 | 12.20 | 10.00 |



NOTES:

1. MATERIAL: HOUSING - PBT, GLASS FILLED, UL 94V-0, COLOR: BLACK.
2. FOR ILLUSTRATION PURPOSES, 10 CKT SIZE HSG. IS SHOWN.
3. PARTS TO BE USED WITH CRIMP TERMINAL PART NUMBER 50394-8***.
4. APPLICABLE WIRE RANGE : AWG #24 - #30.
5. WIRE INSULATION RANGE : DIAMETER 1.40MM MAXIMUM.

| | | | | | | | | | | | |
|--|--|--------------------|---|--|------------------------------|--|--|--------------|---|------------------------|---------------------|
| REVISED EC NO: S2007-0473 DRWN:SKANG CHKD:MLONG APPR:SKTOH | 2006/11/21 2006/11/21 2006/11/22 | DESCRIPTION REV | QUALITY SYMBOLS | GENERAL TOLERANCES (UNLESS SPECIFIED) | | DIMENSION STYLE MM ONLY | | SCALE NTS | DESIGN UNITS METRIC | THIRD ANGLE PROJECTION | |
| | | | ▼=1 ▽=0 | 4 PLACES ± --- ± --- 3 PLACES ± --- ± --- 2 PLACES ± 0.2 ± --- 1 PLACE ± --- ± --- ANGULAR ± 1 ° | mm INCH | DRAWN BY SKANG CHECKED BY MLONG APPROVED BY SKTOH | DATE 2006/05/15 DATE 2006/06/05 DATE 2006/06/09 | TITLE | MGRID, 2MM, W-T-B CRIMP RECEPTACLE HSG W/SIDE LOCKS | MOLEX INCORPORATED | SHEET NO. 1 OF 1 |
| | | | DRAFT WHERE APPLICABLE MUST REMAIN WITHIN DIMENSIONS | SEE TABLE | MATERIAL NO. SD-78045-001 | DOCUMENT NO. | | | | | |
| | | | THIS DRAWING CONTAINS INFORMATION THAT IS PROPRIETARY TO MOLEX INCORPORATED AND SHOULD NOT BE USED WITHOUT WRITTEN PERMISSION | | | | | | | | |

9 8 7 6 5 4 3 2 1