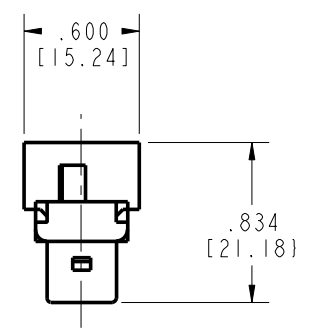
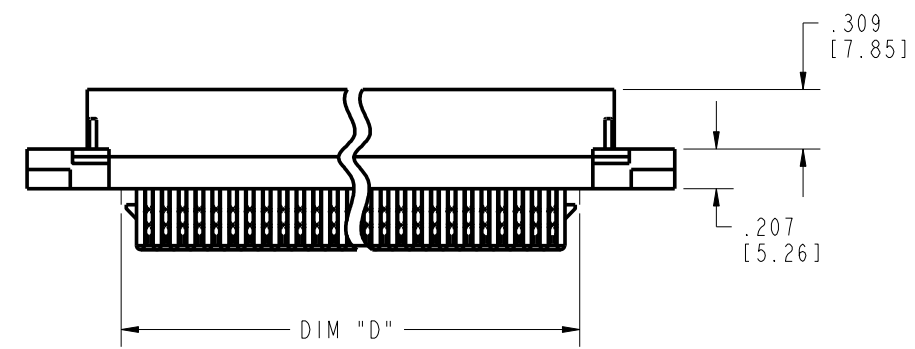
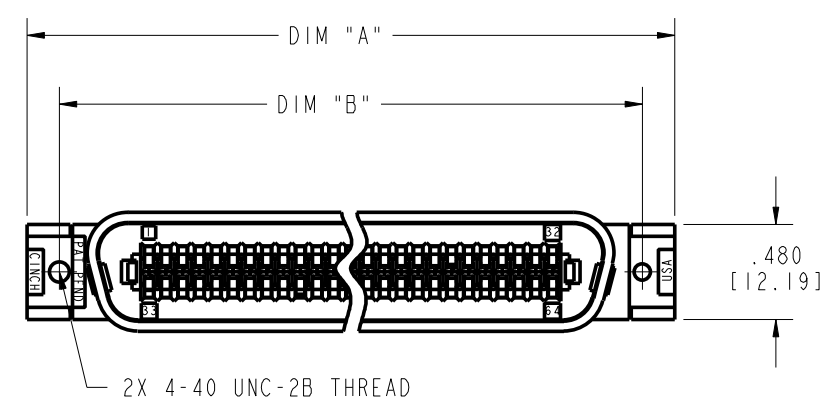


DRAWING REVISIONS

REV	DOCUMENT	APP	DATE
A	DO 05-1073		



NOTES:

1. SPECIFICATIONS:

ELECTRICAL:
 VOLTAGE RATING: 500 VAC @ SEA LEVEL, 125 VAC @ 70,000 FT.
 WITHSTANDING VOLTAGE: 1200 VAC @ SEA LEVEL
 INSULATION RESISTANCE: 5000 MEGOHMS (MIN. INITIAL,
 1000 MEGOHMS MIN. AFTER MOISTURE)
 CONTACT RATING: 5 AMPS (4 AMPS PER CSA)
 CONTACT RESISTANCE: 6 MILLIOHMS MAX.

MATERIALS:

INSULATOR: GRAY UL94V-0 RATED GLASS FILLED POLYESTER
 CONTACT: COPPER ALLOY
 CONTACT AREA PLATING: GOLD (SEE TABLE) OVER NICKEL.
 IDC AREA PLATING: MATTE TIN OVER NICKEL.

ENVIRONMENTAL:

OPERATING TEMPERATURE: -40°C TO +105°C

TERMINATION:

TERMINATES 22 AWG-26 AWG DISCRETE SOLID WIRE WITH USE OF CINCH APPLICATION TOOLS. WIRE WITH PVC INSULATION, .040 INCH MAXIMUM O.D. RECOMMENDED.

2. DIMENSIONS IN [] ARE IN MILLIMETERS.

NO OF POSITIONS [.085 INCH 2.16 MM]	SELECTIVE 15 MICROINCH GOLD PLATING CLASS - B		SELECTIVE 30 MICROINCH GOLD PLATING CLASS - A	
	PART NO.	FACTORY NO.	PART NO.	FACTORY NO.
50	97-3250-01	701 01 50 011	97-3250-01A	701 01 50 012
64	97-3264-01	701 01 64 011	97-3264-01A	701 01 64 012

NO OF POSITIONS	DIM. A		DIM. B		DIM. D	
	IN	MM	IN	MM	IN	MM
50	3.275	83.19	2.947	74.85	2.268	57.61
64	3.875	98.43	3.542	89.97	2.863	72.72

ROHS COMPLIANT

MODELED BY:

UNITS ENGLISH		PRO/E	Cinch	1700 FINLEY RD LOMBARD, IL. 60148
DO NOT SCALE DRAWING	DRAWN BY V. SKUZA	DATE 03/15/05	TITLE SUPERIBBON, SOLID WIRE IDC, CONNECTOR PLUG, PANEL MOUNT, (#4-40)	
	DESIGN ENGINEER A. BALI	03/15/05	MATERIAL AS NOTED	CONTROL SPEC NUMBER
	DESIGN ENGINEERING MGR. A. SHAH	07/08/05	MATERIAL SPEC NUMBER	FINISH AS NOTED
	MFG. ENGINEERING J. OCEGUERA	07/07/05	CAD FILE NUMBER 9732XX01	PROJECT NUMBER C14690
	QUALITY ASSURANCE A. VAZQUEZ	07/06/05	CAGE IDENT NO. SIZE 71785 B	DRAWING NUMBER 97-32XX-01
			SCALE 1:1	SHEET 1 OF 1

THIS DOCUMENT IS THE PROPERTY OF CINCH. NEITHER THIS DOCUMENT NOR ANY OF THE INFORMATION CONTAINED IN IT MAY BE DUPLICATED OR DISCLOSED WITHOUT PRIOR WRITTEN CONSENT OF CINCH.