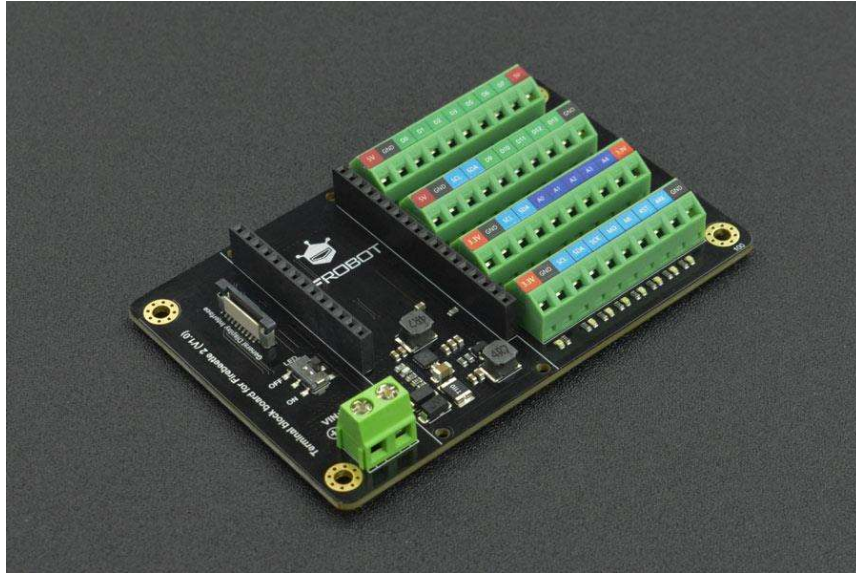




DFROBOT
DRIVE THE FUTURE

Terminal Block Board for FireBeetle 2 ESP32-E IoT Microcontroller

SKU: DFR0923

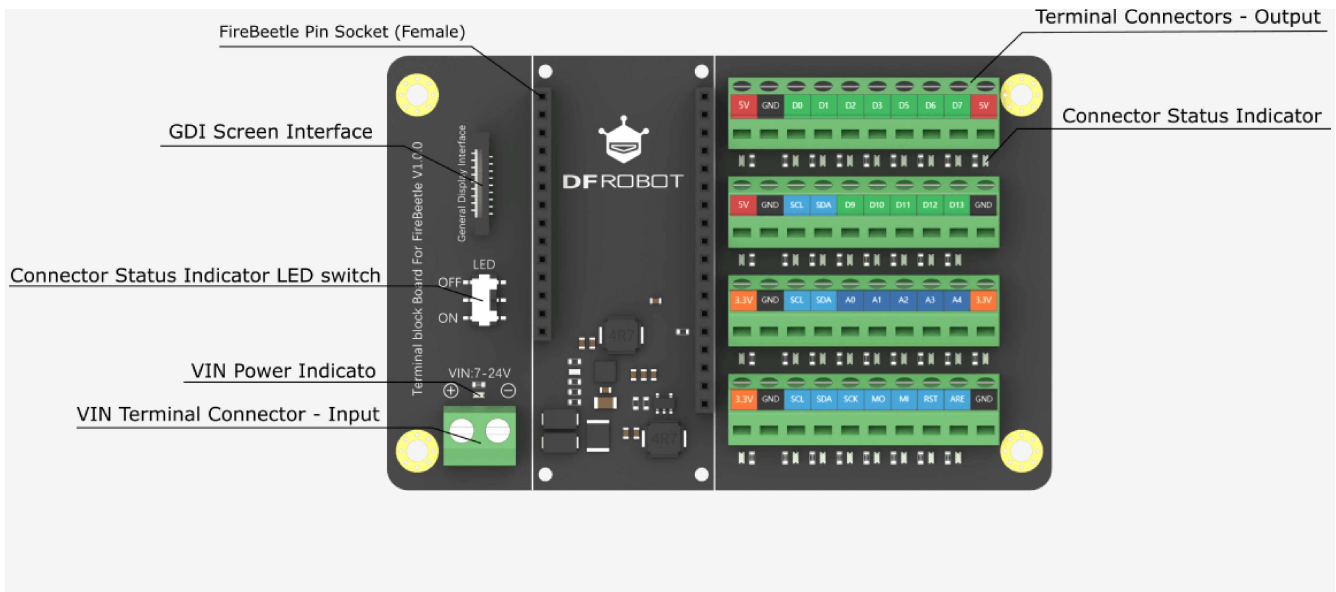


INTRODUCTION

Note: The expansion shield is **ONLY** compatible with FireBeetle 2 ESP32-E IoT Microcontroller (Supports Wi-Fi & Bluetooth).

This expansion shield for FireBeetle 2 is just right for makers who love using terminal blocks for wiring up their projects!

Compared with the previous FireBeetle shields, it comes with additional 7-24V external voltage input and GND port and adopts terminal blocks to secure wires so as to make connections more stable and reliable. Each terminal block (except GND) has an LED for status indication. Since these LEDs also consume power, which leads to higher power consumption, an LED switch is designed on the board to allow users to turn off the LED when not required.



Interface	Function	Remark
FireBeetle Female Pin Socket	Connect FireBeetle 2	/
GDI	Connect screen with GDI port	/
Onboard LED Switch	Control all terminal block status indicators	/
VIN Indicator	LED turns on when there is power input on VIN port	Red
VIN Input Terminal Block	Connect 7-24V external power	/
Terminal Block	Extend all ports of FireBeetle to terminal blocks with more stable connections	/
Terminal Block Indicator	Each terminal has an LED for indicating level status	Power: Red, GPIO: Blue

FEATURES

- Terminal block, more stable and reliable connections
- All pins of the mainboard are broken out
- External Voltage Input: 7-24V
- GDI for connecting the display
- Clear colorful silkscreen
- Terminal block status indicator
- Terminal block status indicator switch

APPLICATIONS

- Smart Soil conditioner
- Multiple Relays Project

SPECIFICATION

- External Voltage Input: 7-24V
- Screen Port: GDI
- 5V Port x3
- 3.3V Port x3
- GND Port x6
- Digital Port x12
- Analog Port x5
- I2C x3
- SPI x1
- Port Indicator x34
- Port Indicator Color: blue, red
- Default ON Port Indicator: 5V, 3.3V, D0, D1, D5, D6, A4, RST
- Dimension (Without Package): 61 x 93.5mm/ 2.40 x 3.68"

DOCUMENTS

- [Product wiki](#)
- [CAD](#)
- [3D-Model](#)
- [Dimension](#)
- [Schematics](#)
- [SchDoc](#)

SHIPPING LIST

- Terminal Block Board for FireBeetle 2 ESP32-E IoT Microcontroller x1