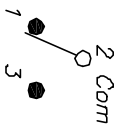


RECOMMENDED P.C.B. LAYOUT
NOT TO SCALE

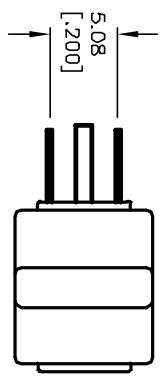


CIRCUIT: SPDT

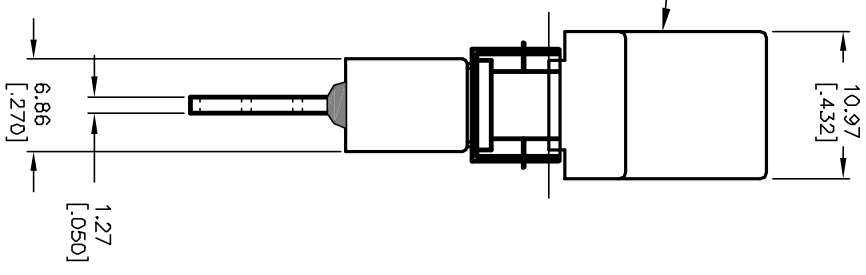
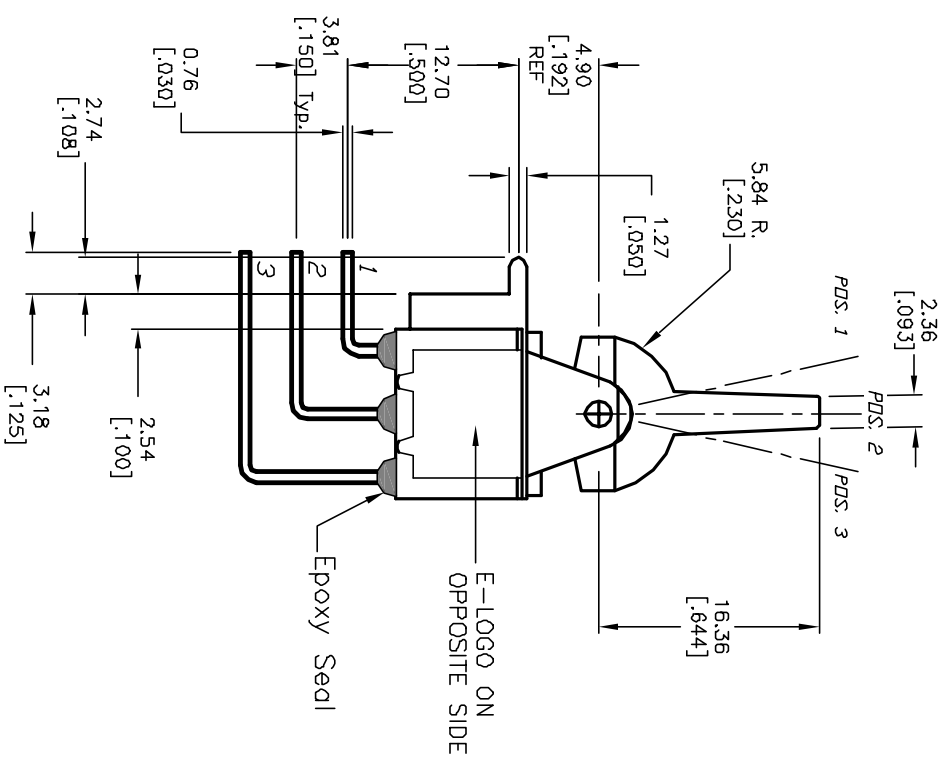
| SWITCH FUNCTION | | |
|-----------------|--------|--------|
| PDS. 1 | PDS. 2 | PDS. 3 |
| | | |
| (CND) | DEF | (CND) |
| 2-3 | OPEN | 2-1 |

()=MENTARY

- NOTES:
1. ALL DIMENSIONS IN MM [INCH]
 2. GENERAL TOLERANCE: X.XX=±0.4
X.XX=±0.25
 3. TERM. NOS. FDR REF. ONLY
 4. RATING: 0.4(VA) max. @20V (AC or DC)
 5. MATERIAL: FIXED TERMINAL & MOVING CONTACT
Copper Alloy w/GOLD plate over
Nickel plate
 6. CONTACT RESISTANCE: 10mILLI Ohms max initial
@2-4VDC, 100ma for AG & AU
 7. ELECTRICAL LIFE: 50,000 make-and-break
cycles at full load.
 8. INSULATION RESISTANCE: 1,000M ohm min.
 9. DIELECTRIC STRENGTH: 1000V RMS @sea level
 10. OPERATING TEMP.: -30°C to 85°C



(J6 BLK) ROCKER



| | | | | |
|------|---------|-------------|---------|------|
| REV. | ECN No. | DESCRIPTION | DATE | CHKD |
| A | 12867 | RELEASED | 2/28/03 | CJB |

| | | | | | |
|---|-------|---------|-----|---------|-----|
| TITLE | SCALE | DATE | DR | DWG | REV |
| 300 SP-4 (J6 BLK) M7 RE (GOLD CONTACTS) | 2:1 | 2/28/03 | CJB | T314067 | A |

E-SWITCH®

THE INFORMATION CONTAINED IN THIS DOCUMENT IS PROPRIETARY TO E-SWITCH AND IS NOT TO BE COPIED OR TRANSFERRED