



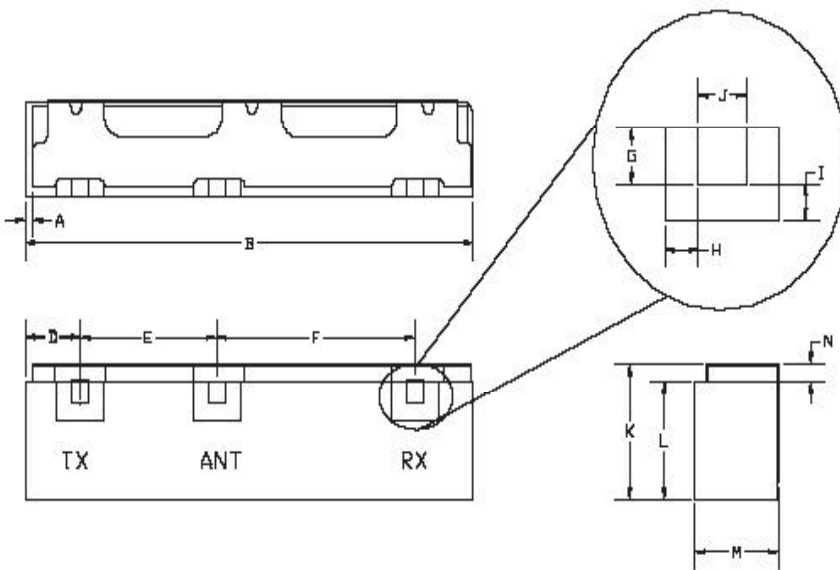
<u>Characteristics</u>	<u>Band 1</u>	<u>Band 2</u>
Passband:	1850-1910 MHz	1930-1990 MHz
Bandwidth:	60 MHz	60 MHz
Passband Return Loss:	12 dB	12 dB
Passband Insertion Loss:	3.1 dB	3.2 dB
Passband Ripple:	1.8 dB	2.1 dB
Input / Output Impedance:	50 Ohms	50 Ohms
Isolation:	56 dB	44 dB
Power Handling:	2 W max	2 W max

<u>Mechanical</u>	
Mounting Method:	SMT
Dimensions:	28 x 6.35 x 3.55 mm

<u>Environmental</u>	
Operating Temperature:	-40 to +70 deg.C
Storage Temperature:	-50 to +90 deg.C

**This product is RoHS compliant.**

**Outline Drawing:**



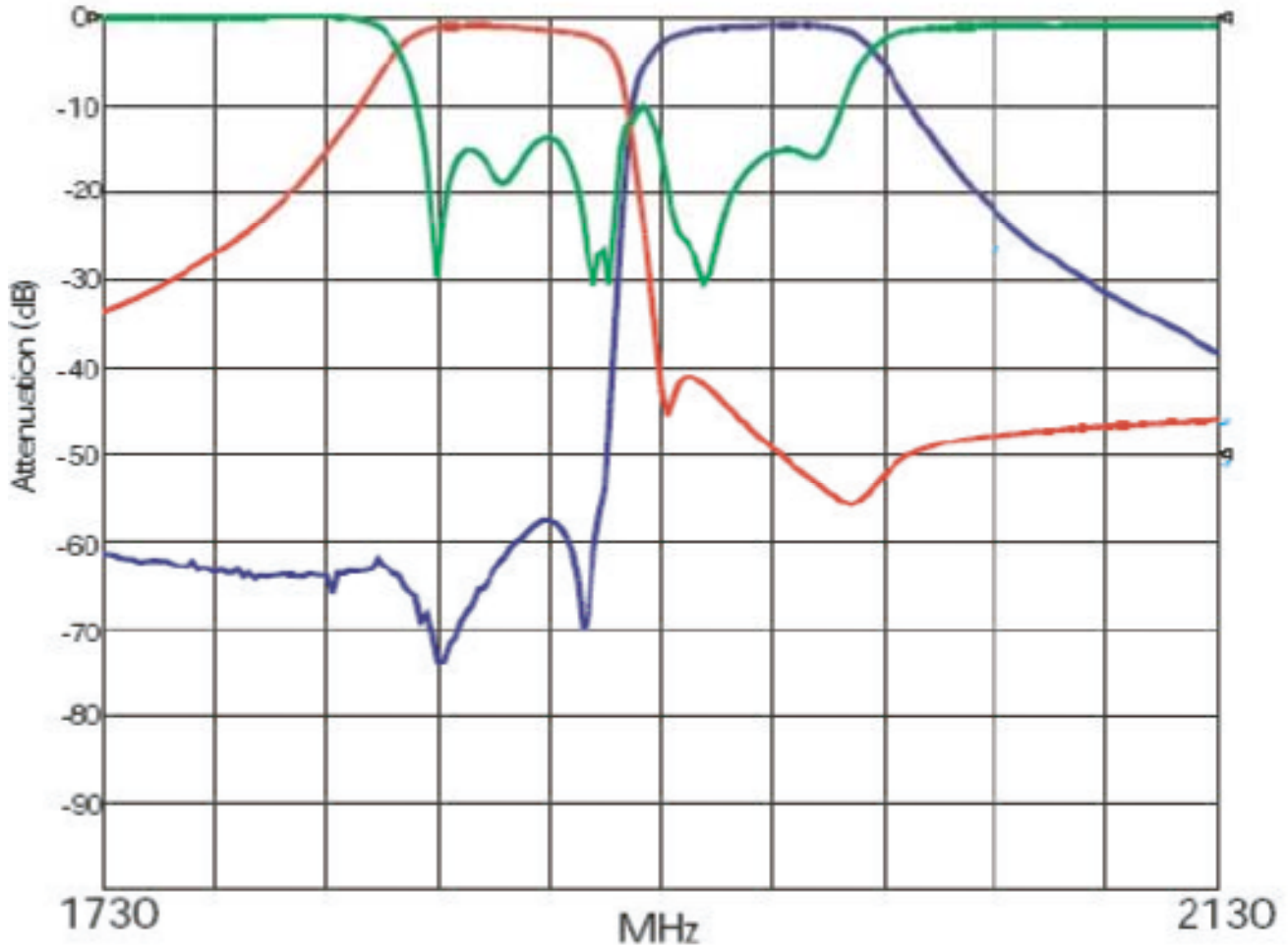
Dim	Nominal (mm)	Tolerance (mm) +/- or max
A	0.13	0.25
B	28	0.28
C		
D	3.18	0.25
E	9.37	0.13
F	12.04	0.13
G	1.02	0.13
H	1.02	0.13
I	1.02	0.13
J	1.02	0.13
K	6.35	0.19
L	5.6	0.19
M	3.55	0.13
*N	0.89	0.13

\*Indicates Reference Only

Available at our Web store:



**Response Plot:**



Available at our Web store: