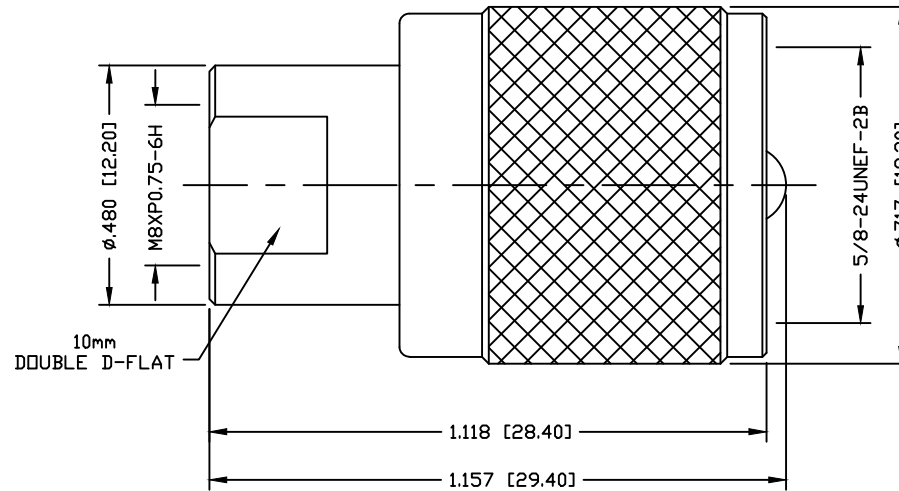


PART NO.

RFE-6112

REV	DESCRIPTION	DWN	DATE	APPROVED
-	ENGINEERING RELEASE	CZS	01/15/20	JDMc



## SPECIFICATIONS:

IMPEDANCE: NON-CONTANT  
 FREQUENCY RANGE: 0-300 MHz  
 WORKING VOLTAGE: 335 Vrms  
 INSULATION RESISTANCE: 5k M ohms min.  
 TEMPERATURE RANGE: -65°C TO +165°C

CUSTOMER  
OUTLINE DRAWINGALL DIMENSIONS  
ARE REFERENCE ONLYUNLESS OTHERWISE SPECIFIED:  
DIMENSIONS ARE IN INCHES  
AND [MILLIMETERS]RoHS  
COMPLIANT

PROPRIETARY AND CONFIDENTIAL  
 THIS DRAWING CONTAINS  
 INFORMATION PROPRIETARY TO  
 RF INDUSTRIES, ANY  
 UNAUTHORIZED USE OF THIS  
 DRAWING IS EXPRESSLY  
 PROHIBITED WITHOUT WRITTEN  
 PERMISSION FROM RF  
 INDUSTRIES. ANY VIOLATION IS  
 PUNISHABLE UNDER U.S.  
 COPYRIGHT LAWS.

**RFconnectors**  
 DIVISION OF RF INDUSTRIES, LTD.

7610 MIRAMAR RD.  
 SAN DIEGO, CA 92126  
 (858) 549-6340  
 (858) 549-6345 FAX

FME PLUG TO  
UHF PLUG ADAPTER

SIZE	CABLE GROUP	DWG NO.	REVISION
A	N/A	RFE-6112	—
SCALE:	ENGINEERING ID:	1560	SHEET 1 OF 1
NTS			

#	DESCRIPTION	QTY	MATERIAL	FINISH
4	SHELL	1	BRASS	NICKEL
3	PIN	1	BRASS	GOLD
2	INSULATOR	1	PTFE	---
1	BODY	1	BRASS	NICKEL
ORJ DRAWN	C. ZUNIGA	01/15/20		
CHECKED				
ORJ DRAWN	C. ZUNIGA	01/15/20		