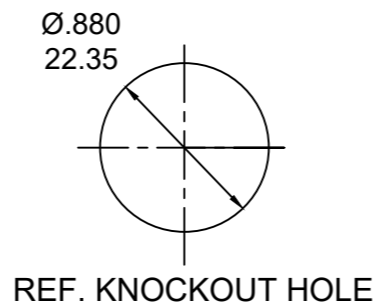
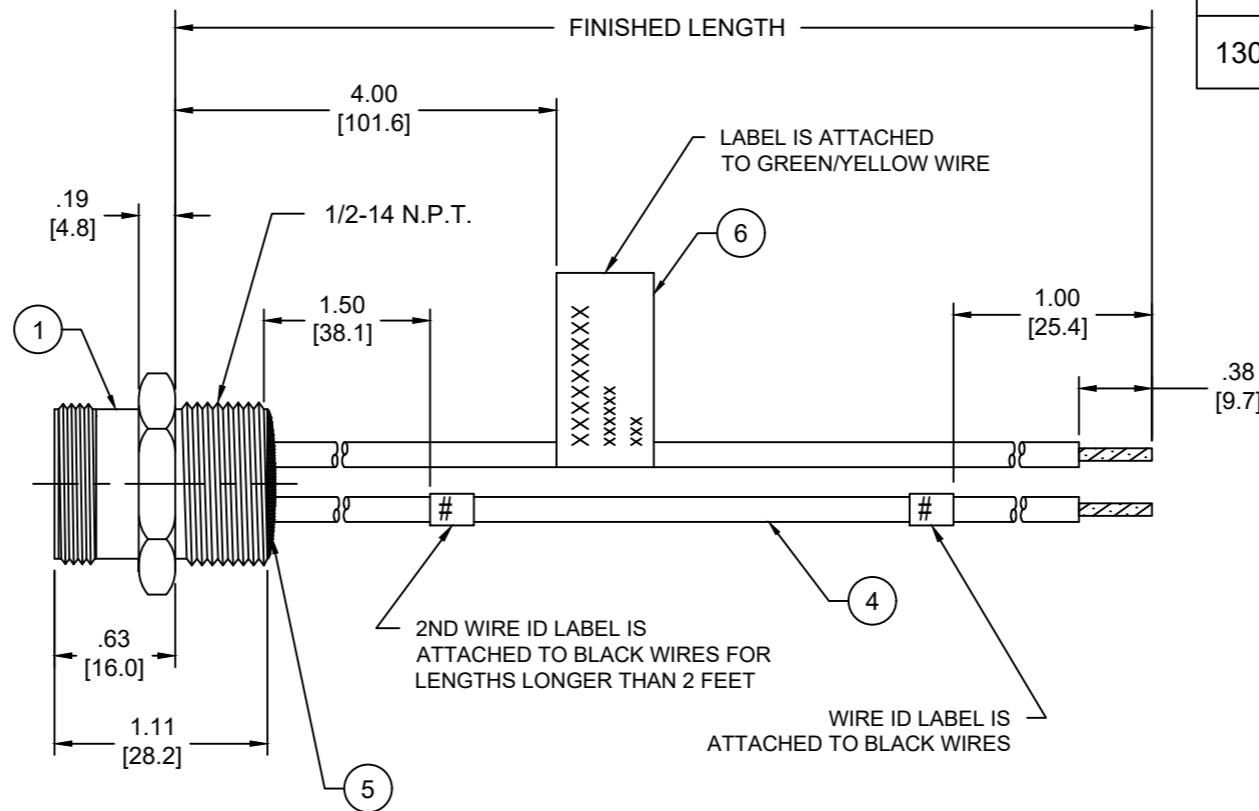


- NOTES:**
- MATERIAL: AS NOTED
  - FINISH: AS NOTED
  - ELECTRICAL:
    - VOLTAGE: 483V PER IEC60664 (E)
    - 600V PER UL2237
    - CURRENT: 15A
  - TEMP RATING: -20° TO +105°C (E)
  - PROTECTION: IP67 (WHEN MATED)
  - COUPLING THREAD: 7/8-16UN
  - UL LISTED FILE: E258922 (E)
  - ALL DIMENSIONS ARE FOR REFERENCE UNLESS TOLERANCED OR NOTED OTHERWISE



**PART NUMBER LEGEND**  
**1R4106A82M005G**

FINISHED LENGTH:  
M005= 0.5 METER  
M010= 1 METER  
M100= 10 METER

PART NO	ENGINEERING NO.	FINISHED LENGTH
1300660307	1R4106A82M005G	0.5M [1 FT 8 IN]
1300660311	1R4106A82M010G	1M [3 FT 3 IN]
1300660312	1R4106A82M020G	2M [6 FT 7 IN]
1300660313	1R4106A82M030G	3M [9 FT 10 IN]

ITEM	DESCRIPTION	MATERIAL	FINISH
6	FLAG LABEL	VINYL	BLACK/YELLOW
5	POTTING MATERIAL	EPOXY	
4	WIRE, 14 AWG (THHN)	PVC INSULATION	SEE FACE VIEW
3	CONTACT PIN	COPPER ALLOY	GOLD OVER NICKEL
2	MALE INSERT	TPE	BLACK
1	RECEPTACLE SHELL	ZINC DIE-CAST	BLACK-E-COAT

(E)

**CABLE LENGTH TOLERANCES**

<.3M [1FT]:	+19mm-0 [+0.75in-0]
.3 - .9M [1 - 3FT]:	+44.5mm-0 [+1.75in-0]
.9 - 1.8M [3 - 6FT]:	+55.6mm-0 [+2.19in-0]
1.8 - 3.7M [6 - 12FT]:	+88.9mm-0 [+3.50in-0]
3.7 - 7.3M [12 - 24FT]:	+165.1mm-0 [+6.50in-0]
7.3-14.6M [24 - 48FT]:	+317.5mm-0 [+12.50in-0]
14.6 - 30.5M [48-100FT]:	+622.3mm-0 [+24.50in-0]
OVER 30M [100FT]	+2% OF FINISHED LENGTH

FUNCTIONAL SYMBOLS F=0 E=0 P=0	THIS DRAWING CONTAINS INFORMATION THAT IS PROPRIETARY TO MOLEX ELECTRONIC TECHNOLOGIES, LLC AND SHOULD NOT BE USED WITHOUT WRITTEN PERMISSION		CURRENT REV DESC: ITEM #2 WAS PVC. ADDED UL & TOL CHART. MODIFIED IEC VOLTAGE, TEMP RATING & PN TABLE.				
	GENERAL TOLERANCES (UNLESS SPECIFIED)						
	DIVISIONAL SYMBOLS		EC NO: 698297		BRAD POWER RECEPTACLE, A-SIZE		
	DRAFT WHERE APPLICABLE MUST REMAIN WITHIN DIMENSIONS		THIRD ANGLE PROJECTION		DRAWING		SERIES

4 PLACES	±---	±---
3 PLACES	±---	±---
2 PLACES	±---	±---
1 PLACE	±---	±---
0 PLACES	±---	±---

DRWN: ABENJAMINLW	2021/06/23
CHK'D: RSTONE	2022/03/16
APPR: BWOODMAN	2022/03/26

INITIAL REVISION:	
DRWN: RSTONE	2017/01/11
APPR: BWOODMAN	2017/01/26

DOCUMENT NUMBER	DOC TYPE	DOC PART	REVISION
SD-130066-068	PSD	001	E

MATERIAL NUMBER	CUSTOMER	SHEET NUMBER
SEE CHART	GENERAL MARKET	1 OF 1