

THIS DRAWING IS UNPUBLISHED.

RELEASED FOR PUBLICATION MAY, 1999.

© COPYRIGHT 1999 By -

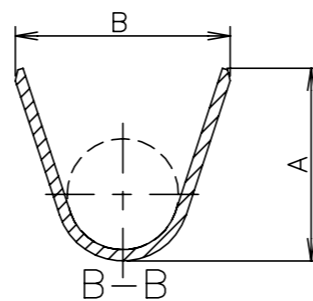
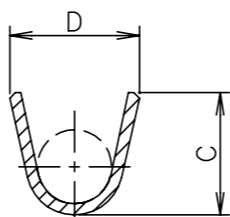
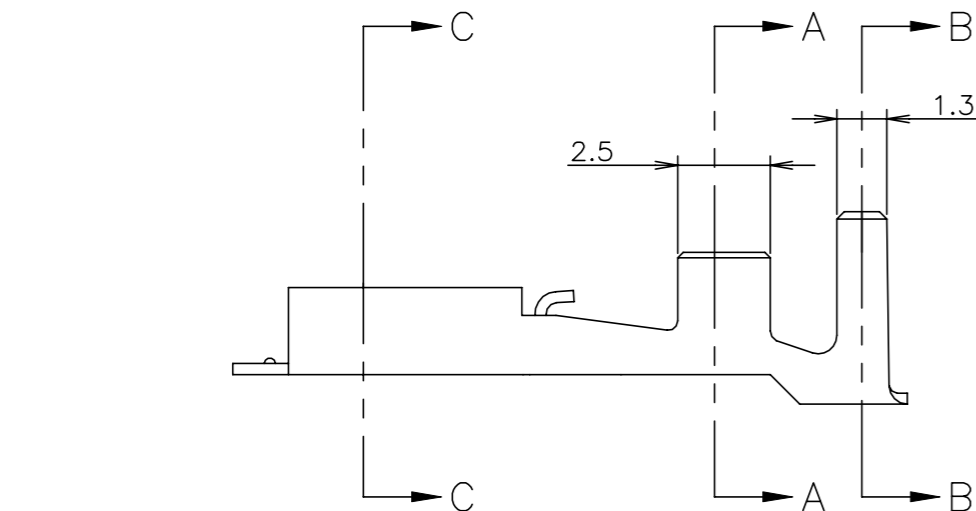
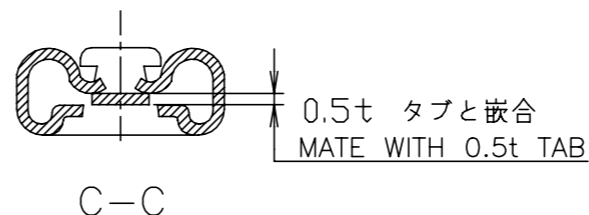
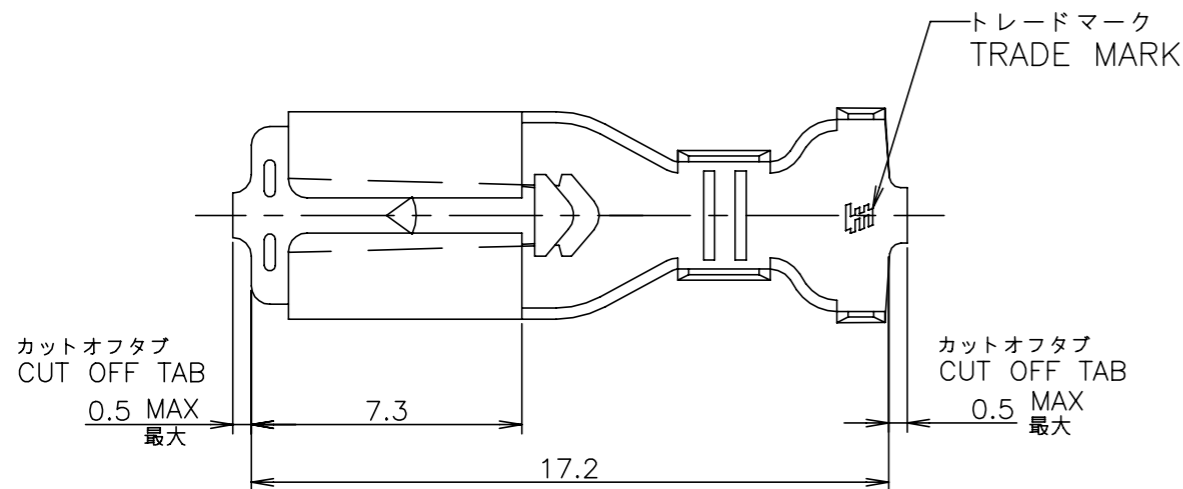
ALL RIGHTS RESERVED.

LOC J DIST

REVISIONS

変更

P	LTR	DESCRIPTION	DATE	DWN	APVD
	L6	REVISED PER ECR-22-129368	16FEB2022	MK	EW



-1, -5, -7; AS SHOWN

- 1 運用スリーブ型番: 174737
- 2 取扱説明書: 411-5391
- 3 手動工具型番: 911588-1
- 4 材料: 錫めっき済み黄銅 (0.3t)
- 5 材料: 錫めっき済み磷青銅 (0.3t)

- 1 APPLICABLE SLEEVE P/N: 174737
- 2 INSTRUCTION SHEET NO: 411-5391
- 3 HAND TOOL NO.; 911588-1
- 4 MATERIAL: PRE-TIN BRASS (0.3t)
- 5 MATERIAL: PRE-TIN PHOS BRO (0.3t)
- 6 ADD SEPERATED PACKAGING PAPER OUTSIDE OF THE REELING

AWG #16-#14	3.8	4.1	5.8	5.2	108-5236	4		10, INCH PAPER REEL	173724-2
AWG #20-#14	3.5	3.3	5.8	5.2	108-5236	4	173725-1	10, INCH PAPER REEL	2232976-1/6
AWG #20-#18	2.8	2.7	4.3	4.2	108-5236	4	173725-7	10, INCH PAPER REEL	173724-7
AWG #20-#14	3.5	3.3	5.8	5.2	108-5685	5		10, INCH PAPER REEL	173724-5
	3.5	3.3	5.8	5.2	108-5236	4	173725-1	10, INCH PAPER REEL	173724-1
WIRE RANGE	D	C	B	A	PRODUCT SPEC 製品規格	MATERIAL 材料	L.P.NO. ばら端子型番	REEL SIZE	P/N 型番

WIRE RANGE 包合電線断面積	AWG #20-#14 0.5~2.2 mm <sup>2</sup>	INSULATION DIA 被覆外径	1.9~4.4 mmφ
-----------------------	--	------------------------	-------------

GENERAL TOLERANCE  
一般公差

10 ≥ : ±0.2  
30 ≥ > 10: ±0.25  
100 ≥ > 30: ±0.3  
ANGLES: ±3°

THIS DRAWING IS A CONTROLLED DOCUMENT.

DIMENSIONS: 単位: 耗 mm	TOLERANCES UNLESS OTHERWISE SPECIFIED: 一般公差
	0 PLC ± 1 PLC ± 2 PLC ± 3 PLC ± 4 PLC ± ANGLES ±
MATERIAL 材料	FINISH 仕上
表参照 SEE TABLE	

DWN M.SUZUKI 10MAY1999	TE Connectivity 187 SERIES POSITIVE LOCK-EX 187 シリーズ ポジティブ ブロック-EX リセブタクル
CHK M.SHINDO 10MAY1999	
APVD M.SHINDO 10MAY1999	
PRODUCT SPEC 製品規格 表参照 SEE TABLE	
APPLICATION SPEC 取付適用規格 114-5114	NAME 名称
WEIGHT	SIZE A3
CUSTOMER DRAWING	CAGE CODE 00779
	DRAWING NO 番号 173724
	RESTRICTED TO
SCALE 尺度 5:1	SHEET 1 OF 1
	REV L6