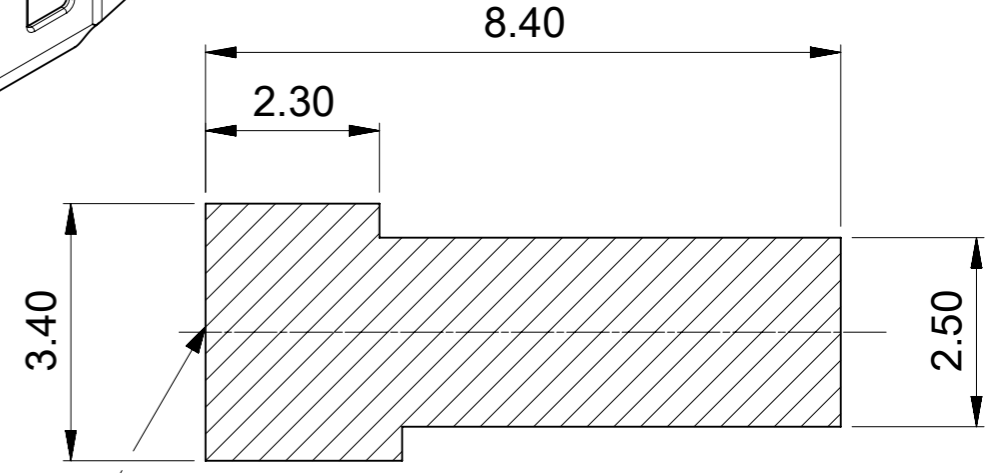
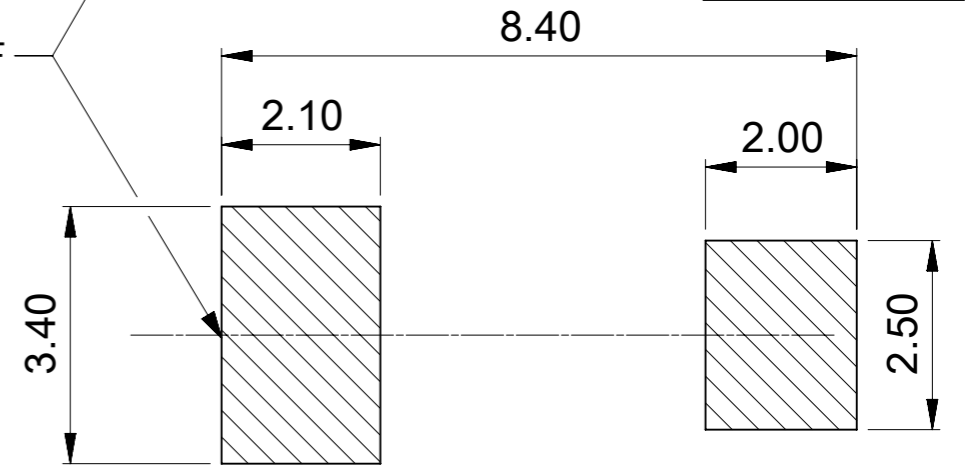


TRADE MARK (MK1)

THE DIRECTION OF WIRE INSERTING



RECOMMENDED SOLDERING THICKNESS : 0.10MM MAX.

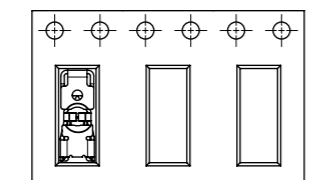
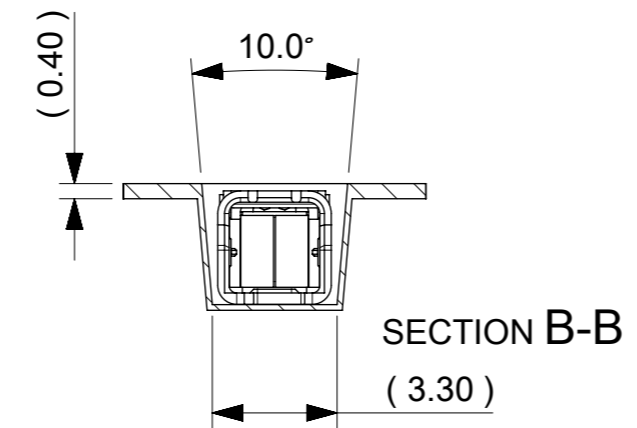
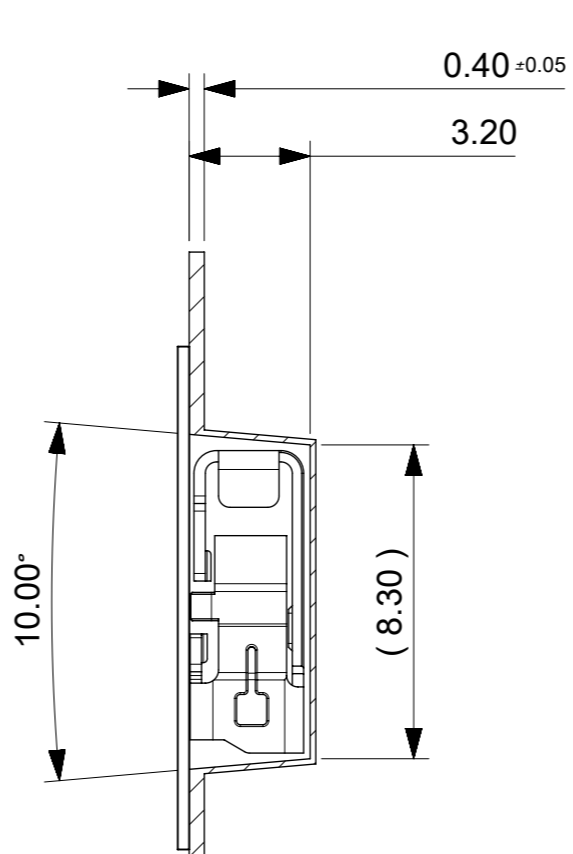
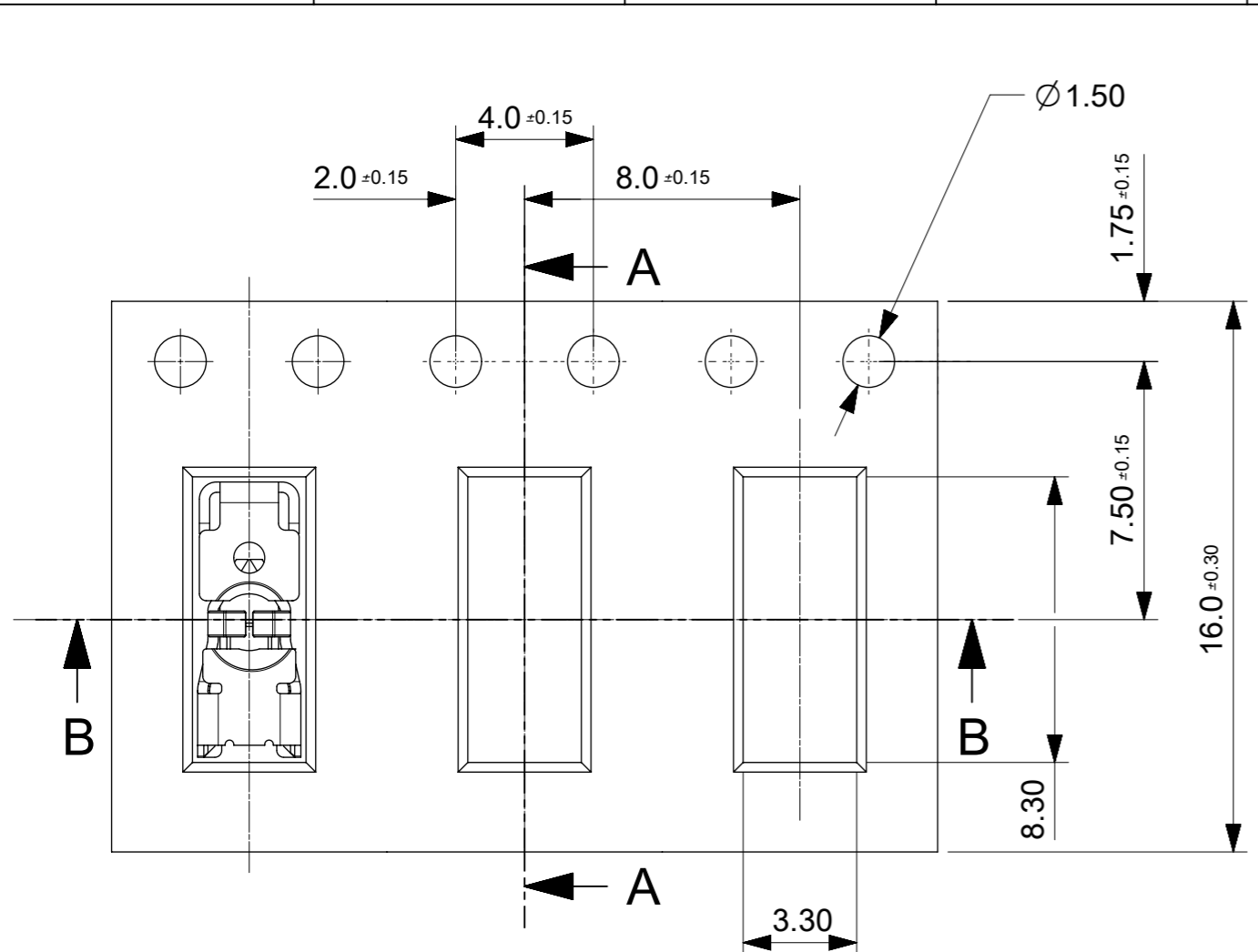


RECOMMENDED SOLDERING THICKNESS : 0.12MM MAX.

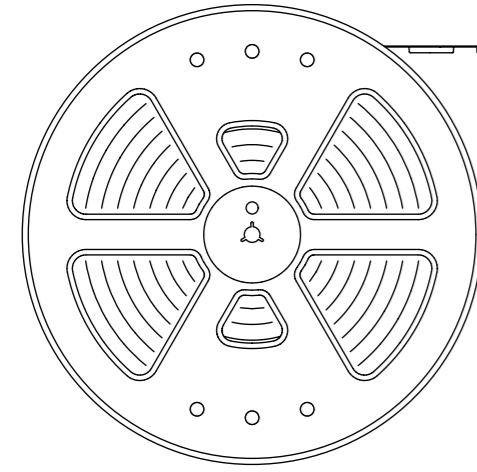
- NOTES**
1. MATERIAL : COPPERALLOY,0.3mm THICKNESS
  2. FINISH : TIN PLATED
  3. COPLANALITY OF SOLDER AREA(PEAK TEMP.: 260°C): BEFORE & AFTER REFLOW : 0.08mm MAX.
  4. APPLICABLE WIRE RANGE: (SEE PRDOCTSPECIFICATION FOR MORE DETAILS) MAX.INSULATION O.D : 2.1mm DIAMETER MAX.
- Ⓐ WIRE STRIP LENGTH : 5.0±0.5mm
- SOLIDE WIRE : AWG#24~#18
  - STRAND WIRE(TIN DIPPED) : AWG#22~#20

**RECOMMENDED PCB LAYOUT(2 TYPE)**  
 [GENERAL TEOLERANCE : ±0.05]  
 (SCALE=10:1)

FUNCTIONAL SYMBOLS	THIS DRAWING CONTAINS INFORMATION THAT IS PROPRIETARY TO MOLEX ELECTRONIC TECHNOLOGIES, LLC AND SHOULD NOT BE USED WITHOUT WRITTEN PERMISSION		CURRENT REV DESC:		<b>molex</b>
	▽A = 0	mm	10:1		
DIVISIONAL SYMBOLS	GENERAL TOLERANCES (UNLESS SPECIFIED)		EC NO: 702813		LITE TRAP CONTACT TERMINAL
	▽E = 0			DRWN: SCHONG03 2022/04/08	
DIVISIONAL SYMBOLS	ANGULAR TOL ± °		CHK'D: JDPARK01 2022/04/12		PRODUCT CUSTOMER DRAWING
	4 PLACES	±	APPR: JBJIN 2022/04/12		
	3 PLACES	± 0.15	INITIAL REVISION:		DOCUMENT NUMBER: 2038638103
	2 PLACES	± 0.15	DRWN: JBJIN 2018/02/19		
1 PLACE	± 0.2	APPR: YSKIM02 2018/02/26		DOC TYPE: PSD	
0 PLACES	± 0.2	DRAFT WHERE APPLICABLE MUST REMAIN WITHIN DIMENSIONS		DOC PART: 001	REVISION: A1
		THIRD ANGLE PROJECTION	DRAWING: A3-SIZE	SERIES: 203863	SHEET NUMBER: 1 OF 1



PULL OUT DIRECTION



PLASTIC BOBBIN

**NOTES**

- NUMBER OF CONNECTORS : 3,450 PCS/REEL.
  - LEAD TAPE LENGTH.  
TOP TAPE NON-BONDED PART. TOP TAPE BONDED PART.
- 
- PEEL-OFF FORCE OF TOP TAPE :  $0.6 \pm 0.35N$  ( $60 \pm 35gf$ )  
(PEELING DIRECTION AS SHOWN IN FOLLOWING FIG.)  
<PEEL-OFF SPEED : 300mm/min (REF.)>
- 
- FLASH IN ANY PORTION SHOULD BE LESS THAN 0.20mm MAX.
  - UNLESS OTHERWISE SPECIFIED INNER RADIUS IS 0.20mm MAX.

[TABLE]

MATERIAL NO.	CONNECTOR		TAPE WIDTH	EMBOSS TAPE NO.
	NO.	COLOR		
2038638103			16.0mm	203863-9001
	203863-8103	NATURAL		

<b>SYMBOLS</b> DIMENSION UNITS: mm SCALE: 5:1 GENERAL TOLERANCES (UNLESS SPECIFIED): ANGULAR TOL: ± 4.0° 4 PLACES: ± 3 PLACES: ± 2 PLACES: ± 0.2 1 PLACE: ± 0.2 0 PLACES: ± 0.2 DRAFT WHERE APPLICABLE MUST REMAIN WITHIN DIMENSIONS	THIS DRAWING CONTAINS INFORMATION THAT IS PROPRIETARY TO MOLEX ELECTRONIC TECHNOLOGIES, LLC AND SHOULD NOT BE USED WITHOUT WRITTEN PERMISSION CURRENT REV DESC:					
	EC NO: 114421 DRWN: JBJIN 2018/02/20 CHK'D: SHCHU 2018/02/26 APPR: YSKIM02 2018/02/26					
	INITIAL REVISION: DRWN: JBJIN 2018/02/20 APPR: YSKIM02 2018/02/26			PRODUCT CUSTOMER DRAWING		
	THIRD ANGLE PROJECTION		DRAWING: A3-SIZE	SERIES: 203863	MATERIAL NUMBER: 2038638103	CUSTOMER: