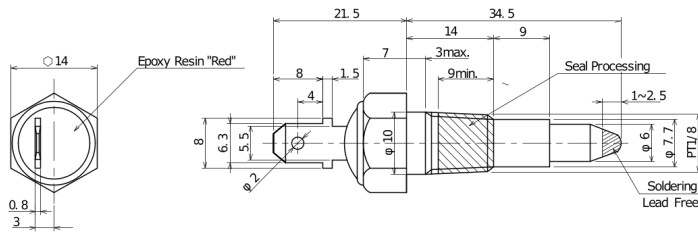


TRS1-120MPR001

Aliases (USEP120MPR0010)

KEMET, TRS-P, Thermal Reed Switch, Screw-In, 3C Temperature Accuracy, High Reliability, High-Speed Response, Long Operational Life, Excellent Environmental Durability, High Temperature Accuracy, 120°C, Make



Click [here](#) for the 3D model.

Dimensions

| | |
|---|------------|
| L | 34.5mm NOM |
| W | 14mm NOM |

Packaging Specifications

| | |
|--------------------|--------|
| Packaging Quantity | 100 |
| Component Weight | 16.2 g |

General Information

| | |
|-------------|---|
| Series | TRS-P |
| Type | Thermal Reed Switch |
| Style | Screw-In |
| Description | Thermal Reed Switch |
| Features | High Reliability, High-Speed Response, Long Operational Life, Excellent Environmental Durability, High Temperature Accuracy |
| RoHS | Yes |
| REACH | Yes |

Specifications

| | |
|-----------------------------|--|
| Switching Temperature | 120C +/-3C |
| Temperature Range | -20/+130°C |
| Contact Type | Make |
| Voltage DC | 100 VDC MAX (Opening/Closing) |
| Current | 0.5 Amps DC MAX (Opening/Closing), 5 mAmps MIN (1VDC, Opening/Closing) |
| Resistance | 500 mOhms MAX (Contact Resistance) |
| Max Opening/Closing Power | 10 W (DC) |
| Max Opening/Closing Voltage | 100 V (DC) |
| Differential Temperature | 10C Maximum |