

MATERIALS AND FINISHES

BODY BRASS
PLATED GOLD

CENTER CONTACT BRASS
PLATED GOLD

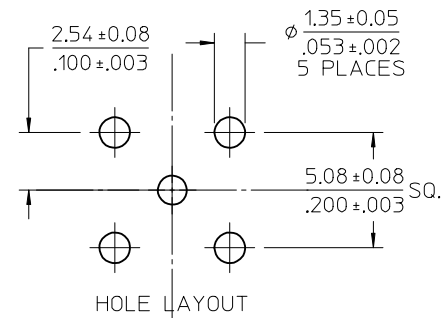
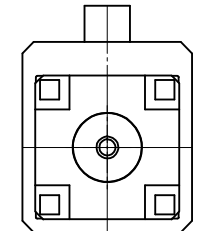
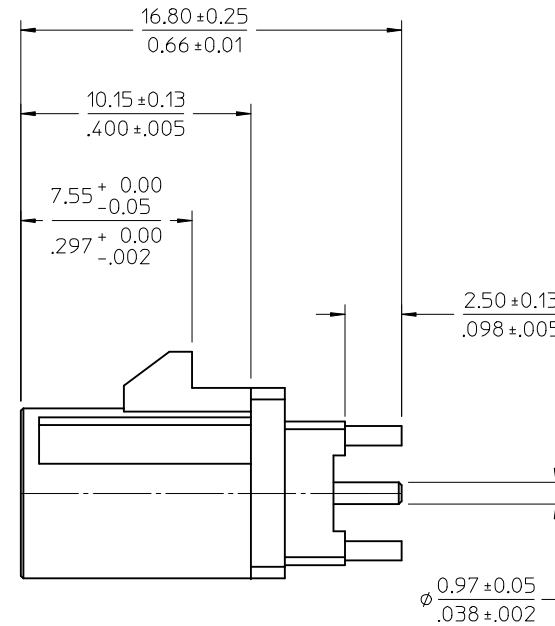
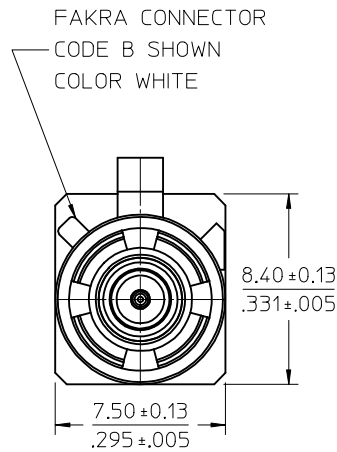
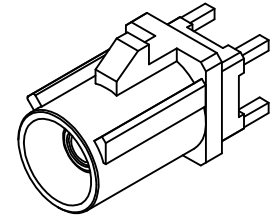
OUTER CASING NYLON46 30GF (STANYL TS200F6)
KEYING CODE B
COLOR WHITE

INSULATOR: TEFLON

RETENTION SPECIFICATION:

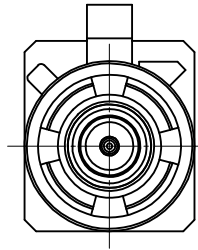
THE FAKRA CONNECTOR SHROUD WILL WITHSTAND
A LONGITUDINAL FORCE OF 110 N(24.75 LBS)

PACKAGE BY TRAY

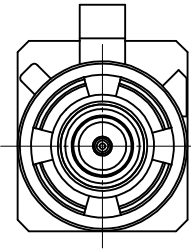


PS-89675-3310	PRODUCT SPECIFICATION
MIL-STD-348A, FIG. 311.1	INTERFACE
SPECIFICATION	DESCRIPTION

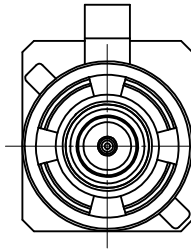
ADDED PACKAGE PER RF16-E032 EC NO: URF2016-0610 DRW:ELIN 2016/03/08 CHKD: APPR:YCHENG 2016/03/08	QUALITY SYMBOLS ▽=0 ▽=0 ▽=0	GENERAL TOLERANCES (UNLESS SPECIFIED)		DIMENSION STYLE MM/IN		SCALE 5:1	DESIGN UNITS METRIC	THIRD ANGLE PROJECTION	
				DRAWN BY DATE EL IN 2012/04/02		TITLE		SMB FAKRA JACK STR. 50 OHMS FOR PCB FAKRA-J/PCB	
				CHECKED BY DATE KERRIE 2012/04/02		MATERIAL NO.			
				APPROVED BY DATE MHUANG 2012/12/21		DOCUMENT NO.		SHEET NO.	
A1		ANGULAR ± 2 °		SEE SHEET 2		SD-73403-624		1 OF 3	
DRAFT WHERE APPLICABLE MUST REMAIN WITHIN DIMENSIONS		THIS DRAWING CONTAINS INFORMATION THAT IS PROPRIETARY TO MOLEX INCORPORATED AND SHOULD NOT BE USED WITHOUT WRITTEN PERMISSION							



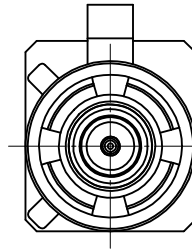
CODE-A



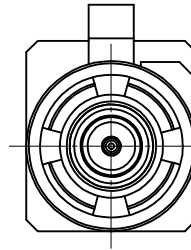
CODE-B



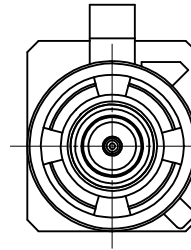
CODE-C



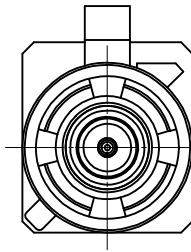
CODE-D



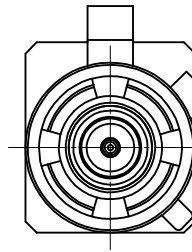
CODE-E



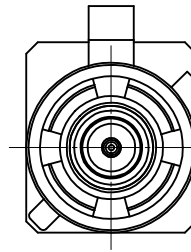
CODE-F



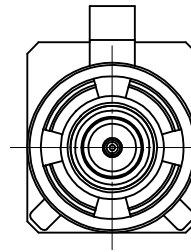
CODE-G



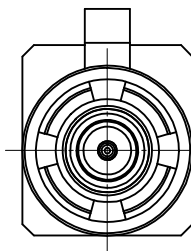
CODE-H



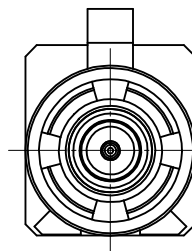
CODE-I



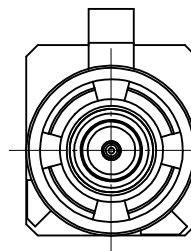
CODE-K



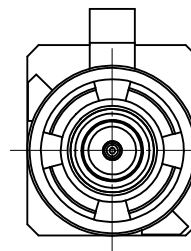
CODE-Z



CODE-L



CODE-M



CODE-N

N	PASTEL GREEN	73403-6253
M	PASTEL ORANGE	73403-6252
L	CARMINE RED	73403-6251
Z	WATER BLUE	73403-6250
K	CURRY YELLOW	73403-6249
I	BEIGE	73403-6248
H	VIOLET	73403-6247
G	GRAY	73403-6246
F	BROWN	73403-6245
E	GREEN	73403-6244
D	BORDEAUXVIOLET	73403-6243
C	BLUE	73403-6242
B	SIGNAL WHITE	73403-6241
A	BLACK	73403-6240
KEYING CODE	COLOR	PART NO.

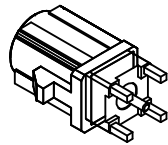
SEE SHEET 1	
EC NO: URF2016-0610	2016/03/08
DRW: INELIN	2016/03/08
CHKD:	
APPR: YCHENG	2016/03/08
REV	DESCRIPTION
A1	

QUALITY SYMBOLS
▽=0
▽=0
▽=0

GENERAL TOLERANCES (UNLESS SPECIFIED)
4 PLACES ± ---
3 PLACES ± ---
2 PLACES ± ---
1 PLACE ± ---
0 PLACE ± ---
ANGULAR ± 2 °
DRAFT WHERE APPLICABLE MUST REMAIN WITHIN DIMENSIONS

DIMENSION STYLE	MM/IN
DRAWN BY	EL IN
DATE	2012/04/02
CHECKED BY	KERRIE
DATE	2012/04/02
APPROVED BY	MHUANG
DATE	2012/12/21
MATERIAL NO.	SEE TABLE

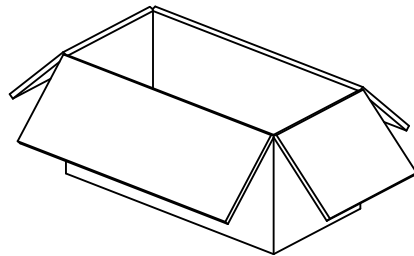
SCALE	1:1
DESIGN UNITS	METRIC
THIRD ANGLE PROJECTION	
TITLE	SMB FAKRA JACK STR. 50 OHMS FOR PCB FAKRA-J/PCB
	molex
DOCUMENT NO.	SD-73403-624
SHEET NO.	2 OF 3
THIS DRAWING CONTAINS INFORMATION THAT IS PROPRIETARY TO MOLEX INCORPORATED AND SHOULD NOT BE USED WITHOUT WRITTEN PERMISSION	



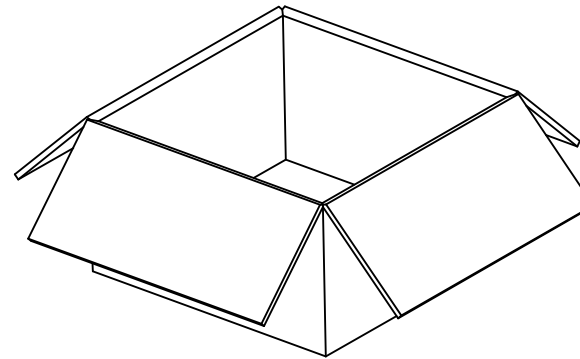
PART NO.: 73403-6240 ~ 73403-6253



80 SET PER TRAY
P/N: 89707-0190



1600 SET PER INNER CARTON BOX
P/N: 96707-0001



3200 SET PER OUTER CARTON BOX
P/N: 96708-0005

SEE SHEET 1 EC NO: URF2016-0610 DRAWN BY: DRWNLIN CHKD: APPR: YCHENG 2016/03/08 2016/03/08	QUALITY SYMBOLS	GENERAL TOLERANCES (UNLESS SPECIFIED)		DIMENSION STYLE MM/IN		SCALE 1:5	DESIGN UNITS METRIC	THIRD ANGLE PROJECTION	
	▽=0	mm	INCH	DRAWN BY	DATE	TITLE SMB FAKRA JACK STR. 50 OHMS FOR PCB FAKRA-J/PCB molex DOCUMENT NO. SD-73403-624 SHEET NO. 3 OF 3			
	▽=0	4 PLACES ±	±	EL IN	2012/04/02				
	▽=0	3 PLACES ±	±	CHECKED BY	DATE				
	▽=0	2 PLACES ±	±	KERRIE	2012/04/02				
▽=0	1 PLACE ±	±	APPROVED BY	DATE					
▽=0	0 PLACE ±	±	MHUANG	2012/12/21	MATERIAL NO.		SEE SHEET 1		
ANGULAR ± 2°		DRAFT WHERE APPLICABLE MUST REMAIN WITHIN DIMENSIONS		SIZE		THIS DRAWING CONTAINS INFORMATION THAT IS PROPRIETARY TO MOLEX INCORPORATED AND SHOULD NOT BE USED WITHOUT WRITTEN PERMISSION			