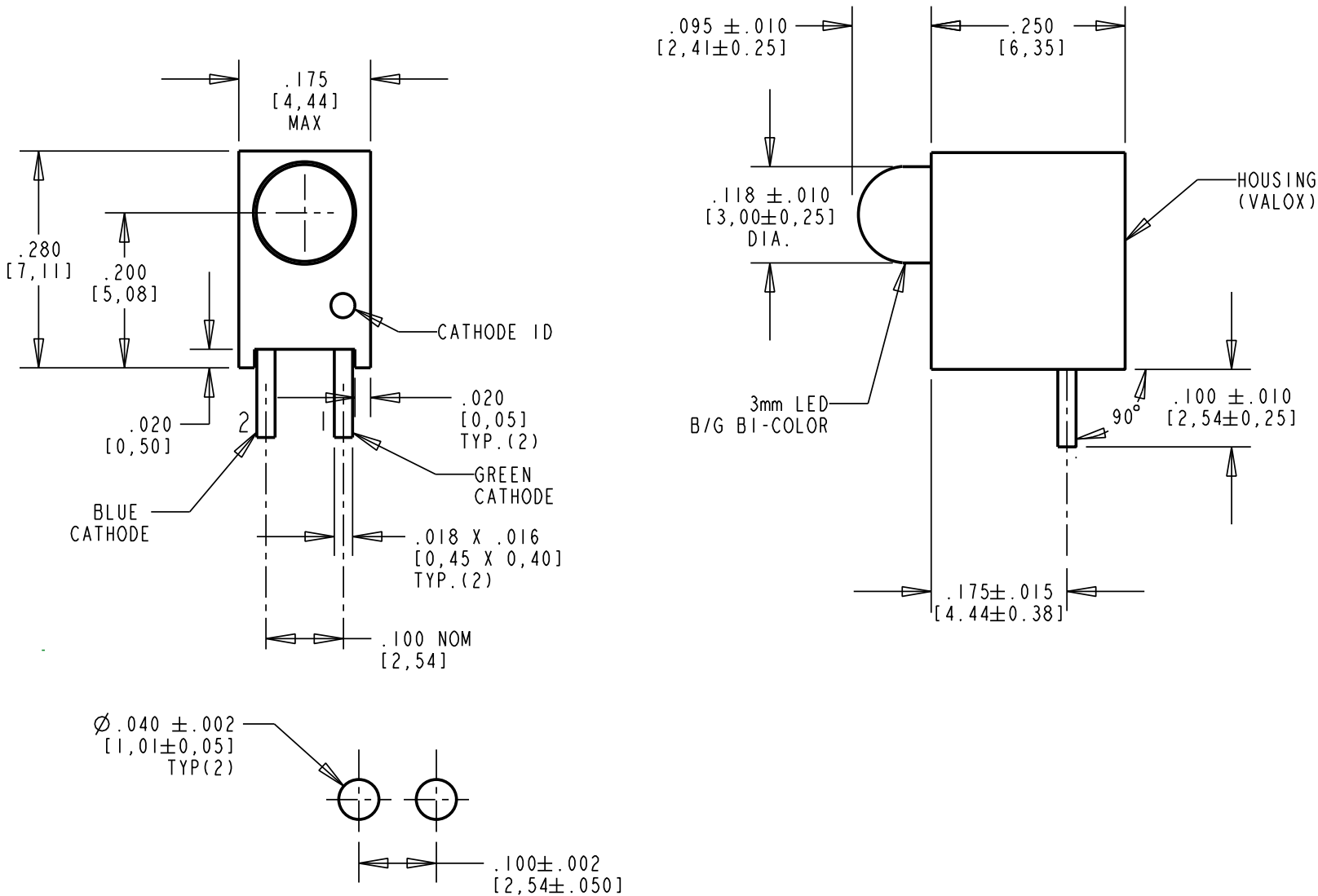


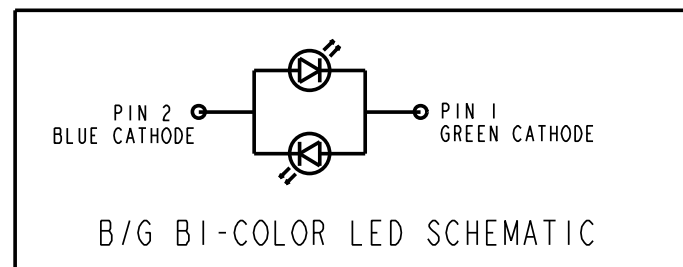
REV	ECN NO	REVISIONS	DRN	CKD	APP	DATE
A	—	NEW RELEASE	KLJ	N.O.	MES	11-16-07
B	—	"4.0" WAS "2.6"	KLJ			



COLOR	PEAK EMISSION WAVELENGTH (nm)	DOMINANT WAVELENGTH (nm) TYP	VIEWING ANGLE (°)	LUMINOUS INTENSITY (mcd) @ I <sub>f</sub> = 20 mA, 25°C		FORWARD VOLTAGE (V) @ I <sub>f</sub> = 20 mA, 25°C	
				MIN	TYP	TYP	MAX
GREEN	565	569	60	6.5	14	2.1	2.6
BLUE	428	465	60	3.8	8.5	4.0	5.0

ABSOLUTE MAXIMUM RATINGS AT 25°C AMBIENT		GREEN	BLUE	UNITS
POWER DISSIPATION		75	100	mW
DC FORWARD CURRENT		30	20	mA
PEAK FORWARD CURRENT (1/10 DUTY CYCLE, 0.1 ms PULSE WIDTH)		90	50	mA
DERATE LINEARLY FROM 30°C FOR BLUE / 50°C FOR GREEN		0.40	0.30	mA/°C
REVERSE VOLTAGE		5	5	V
SOLDERING TEMPERATURE (.157 in FROM BODY)		260 FOR 5 SECONDS		°C
OPERATING TEMPERATURE		-20 TO +80		°C
STORAGE TEMPERATURE		-30 TO +100		°C

RECOMMENDED P.C.B. HOLE PATTERN



**RoHS Compliant 551-3307-802F Thru hole Bi-color CBI**

Part Numbers with the "F" suffix ending are RoHS Compliant.  
 Example: 551-3307-802F  
 The bag packaging is marked with "RoHS Compliant" label or equivalent markings.  
 Parts can be wave soldered, dip soldered or hand soldered using typical lead-free soldering process with max 260°C temp. for 5 sec.

NOTES:

- LEADS TO FIT INTO HOLE PATTERN SPACED AS SHOWN.
- LEAD FINISH IS TIN (Sn) PLATED OVER NICKEL (Ni) ON COPPER ALLOY (Cu).
- LED LEAD DIMENSIONS SHOWN ARE MEASURED AT HOUSING EXIT.
- PIN NUMBERS FOR REFERENCE ONLY, DESIGNATION NON-EXISTENT ON PARTS.
- DIALIGHT PART NUMBER: 551-3307-802F.
- THIS ASSEMBLY CONTAINS ELECTROSTATIC DISCHARGE SENSITIVE DEVICES (ESDS). MAINTAIN ALL PRECAUTIONARY MEASURES DURING ASSEMBLY, HANDLING AND STORAGE IN ACCORDANCE WITH IPC-A-610.



**ATTENTION:**  
 OBSERVE PRECAUTIONS FOR  
 HANDLING ELECTROSTATIC  
 SENSITIVE DEVICES

THIS DRAWING AND THE CONTENTS HEREIN ARE CONFIDENTIAL AND THE SOLE PROPERTY OF DIALIGHT. REPRODUCTION OF THIS DRAWING OR CONSTRUCTION OF ANY PARTS WITHIN THIS DRAWING ARE FORBIDDEN WITHOUT THE WRITTEN CONSENT OF DIALIGHT.		
SCALE: DRAWING SCALE ALL DIM'S IN: INCHES (MM)	DRAWING NUMBER C-17554	REV B
TOLERANCES: UNLESS OTHERWISE SPECIFIED FRACTIONS: ±1/64 DECIMALS (.XX): ±.01 DECIMALS (.XXX): ±.005 DECIMALS (.XXXX): ±.0005 ANGLES: ±1°	TITLE 3mm LED CBI .200" HIGH $\phi$ , B/G BI-COLOR	
FINISH:	MATERIAL	
FSCM 83330	1501 ROUTE 34 SOUTH FARMINGDALE, NJ 07727	
	SHEET II OF II	FAMILY TABLE: