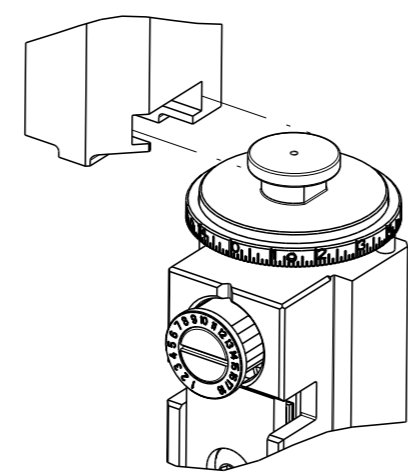


THIS DRAWING IS UNPUBLISHED.	RELEASED FOR PUBLICATION	20	
COPYRIGHT © BY TYCO ELECTRONICS CORPORATION. ALL RIGHTS RESERVED.			
PART NUMBER	REVISION	DESCRIPTION	FEED TYPE
2151146-2	E	FINE CRIMP HEIGHT ADJUST	PNEUMATIC
7-2151146-2	E	PNEUMATIC AND CRIMP TOOLING KIT	PNEUMATIC
7-2151146-7	A	CRIMP TOOLING KIT	-

ATLANTIC VERSION TERMINATOR INTERFACE ADAPTER

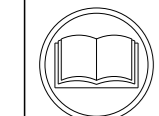


APPLICATOR DATA		
CRIMP	SIZE	TYPE
WIRE	4.57 mm [.180]	F
INSUL	10.92 mm [.430]	O

APPLICATOR INSTRUCTIONS 408-35042

TERMINAL DATA: TE TERMINAL		TE CRIMP SPECIFICATION	
TERMINAL NAME: MAXI-POWER TIMER CONTACT			
WIRE STRIP LENGTH		INSULATION DIAMETER RANGE	
10.10-10.90 mm [.398-.429 IN]		∅	
TERMINAL APPLICATION SPECIFICATION	114-18075	-	-
TERMINALS APPLIED			
TE TERMINAL	TE TERMINAL	TE SEAL	TE SEAL
962936-1	2-962936-1	1355437-1	
			SEAL INSULATION DIAMETER RANGE
			∅ 4.60-5.20

WIRE SIZE	CRIMP HEIGHT mm [INCH]	CRIMP HEIGHT REFERENCE SETTING
6.00mm2	3.08 +/- 0.05 [1.21 +/- .002]	2.3
4.00mm2	2.74 +/- 0.05 [1.08 +/- .002]	5.9



- RECOMMENDED SPARE PARTS
  - REFER TO SUPPLIED INSTRUCTION SHEET FOR CLEANING, LUBRICATION AND STORAGE OF APPLICATOR.
  - APPLY PART NUMBER 2-23419-6 LOCTITE TO THREADS OF ITEM 242.
  - CRIMP HEIGHT REFERENCE SETTING WAS THE SETTING USED WHEN THE APPLICATOR WAS QUALIFIED AT THE FACTORY. ADJUSTMENT MAY BE NECESSARY WHEN RUNNING APPLICATOR IN THE FIELD.
  - TERMINAL PITCH NOT COMPATIBLE WITH MECHANICAL FEED.
  - APPLICATOR DOES NOT CUT CARRIER STRIP.
  - CUT TO LENGTH AT ASSEMBLY.
  - RELOCATE ITEM 19 TO BACK OF APPLICATOR.
9. UNLESS SPECIFIED OTHERWISE TORQUE VALUES SHALL BE USED PER DOCUMENT, 101-35000.

**\*WARNING**  
ON INSTALLATION, SET WIRE DISC TO CRIMP HEIGHT REFERENCE SETTING FOR LARGEST WIRE SIZE. CRIMP HEIGHT REFERENCE SETTINGS GREATER THAN THE VALUE SHOWN MAY CAUSE DAMAGE TO THE CRIMP TOOLING, REFER TO THE INSTRUCTION SHEET FOR PROPER SETUP AND ADJUSTMENTS.

LOC	DIST	REVISIONS					
A	66	P	LY#	DESCRIPTION	DATE	OWN	APVD
		B		ECR-13-006124	10APR2013	XZ	TE
		C		ECR-15-014902	12OCT2015	JH	GB
		D		ECR-17-003848	17MAR2017	TB	CT
		E		ECR-20-004550	27MAR2020	FJ	GB

-	2	2	2168400-4	SHCS, LOW HEAD, RoHS, M4 X 8	272
-	1	1	2119641-1	FEED CAM, AIR FEED	248
-	1	1	2119082-9	CAM, SNAIL, INSULATION ADJUSTMENT	244
-	1	1	2079764-1	WASHER, WAVE SPRING, CREST-TO-CREST	243
-	1	1	2119083-1	RETAINER, INSULATION DIAL	242
-	1	1	2844940-2	AIR FEED MODULE	238
-	REF	REF	994970-2	COUNTER, MAGNETIC	164
-	1	1	1-455888-4	SPACER, CRIMPER	120
-	1	1	1-18028-2	WASHER, FLAT, REG M4	119
-	1	1	1-22281-8	SPRING, COMPRESSION	101
-	1	1	980371-4	SCR, SKT HD SHLDR 5.0 DIA X 6.0	100
-	1	1	2844908-1	SCREW, LOCKING	99
-	1	1	2844907-1	POST, LOCKING	98
-	2	2	2-18032-5	SCR, SET, FLT PNT, M5 X 20.0	97
-	2	2	2168083-1	SCR, SKT HD CAP, RoHS, M3 X 8.0	95
-	2	2	2168083-1	SCR, SKT HD CAP, RoHS, M3 X 8.0	85
-	1	1	455888-3	SPACER, CRIMPER	83
-	1	1	2-455888-8	SPACER, CRIMPER	82
-	1	1	2119791-9	DEPRESSOR, WIRE	72
-	1	1	1803607-3	DOCUMENTATION PACKAGE	71
-	1	1	1803096-1	EXTENSION PLATE	70
-	1	1	2119943-1	WASHER, SPACER	69
-	1	1	2119740-1	TAG, IDENTIFICATION	67
-	2	2	2168078-1	SCREW, DRIVE, RH, RoHS, 2 x .188	66
-	1	1	2168083-2	SCR, SKT HD CAP, RoHS, M4 X 8.0	60
-	1	1	5-18022-5	SCR, HEX HD CAP, M4 X 6.0	59
-	1	1	1-2168083-3	SCR, SKT HD CAP, RoHS, M3 X 16	57
-	1	1	1-1338683-1	FEED PAWL	56
-	2	2	2168083-3	SCR, SKT HD CAP, RoHS, M4 X 12.0	54
-	2	2	2168083-3	SCR, SKT HD CAP, RoHS, M4 X 12.0	53
-	1	1	5018030-1	NUT, HEX, REG, RoHS, M3	52
-	1	1	1-811242-0	BUMPER, HOLD DOWN	51
-	1	1	690753-2	SPACER, TONKER	50
-	1	1	18023-9	SCR, SKT HD CAP M4 X 6.0	49
-	1	1	2-1803583-6	APPLICATOR BASIC ASSEMBLY, SF	46
-	1	1	1803515-2	RAM ASSEMBLY, SF ATLANTIC	44
-	1	1	1803602-2	SCR, BHSC, RoHS (M8 X 40)	41
-	1	1	1-1752356-2	SUPPORT, TERMINAL	34
-	2	2	1-2079383-3	SCR, BHSC, RoHS (M4 X 25)	33
-	1	1	2168083-6	SCR, SKT HD CAP, RoHS, M5 X 65	31
-	2	2	3-2844962-5	SPACER, CYLINDRICAL, STRIP GUIDE	30
-	1	1	2844938-9	PLATE, STRIP GUIDE	29
-	1	1	1-455888-0	SPACER, CRIMPER	28
-	2	2	22283-1	SPRING, COMPRESSION	27
-	1	1	356835-1	LEVER, DRAG RELEASE	26
-	1	1	240792-1	DRAG, TERMINAL	25
-	1	1	2-1320928-2	STRIP GUIDE	24
-	1	1	2168083-2	SCR, SKT HD CAP, RoHS, M4 X 8.0	21
-	2	2	1-18028-2	WASHER, FLAT, REG M4	20
-	1	1	1803013-1	STRIPPER, SIDE FEED	19
-	1	1	2-690438-2	FRONT STRIP GUIDE	18
-	2	2	2079383-4	SCR, BHSC, RoHS (M4 X 8)	15
-	1	1	1633782-2	FENCE	14
-	1	1	4-22280-7	SPRING, COMPRESSION	12
-	1	1	1-356885-3	STOP, SHEAR	11
-	1	1	2119805-7	SHEAR HOLDER, FRONT	10
-	1	1	1-318059-6	FLOATING SHEAR, FRONT	9
-	1	2	1633930-3	ANVIL, COMBINATION	8
-	-	-	-	-	7
-	-	-	-	-	6
-	1	1	1803080-4	DEPRESSOR, SHEAR	5
-	1	1	5-238011-4	BLOCK, CRIMPER SPACER	4
-	1	2	1-1633965-7	CRIMPER, INSULATION O PREMIUM	3
-	1	1	1-455888-2	SPACER, CRIMPER	2
-	1	2	3-1752057-5	CRIMPER, WIRE PREMIUM, STEPPED	1
-	77	72	-2	PART NO	
-				DESCRIPTION	ITEM NO

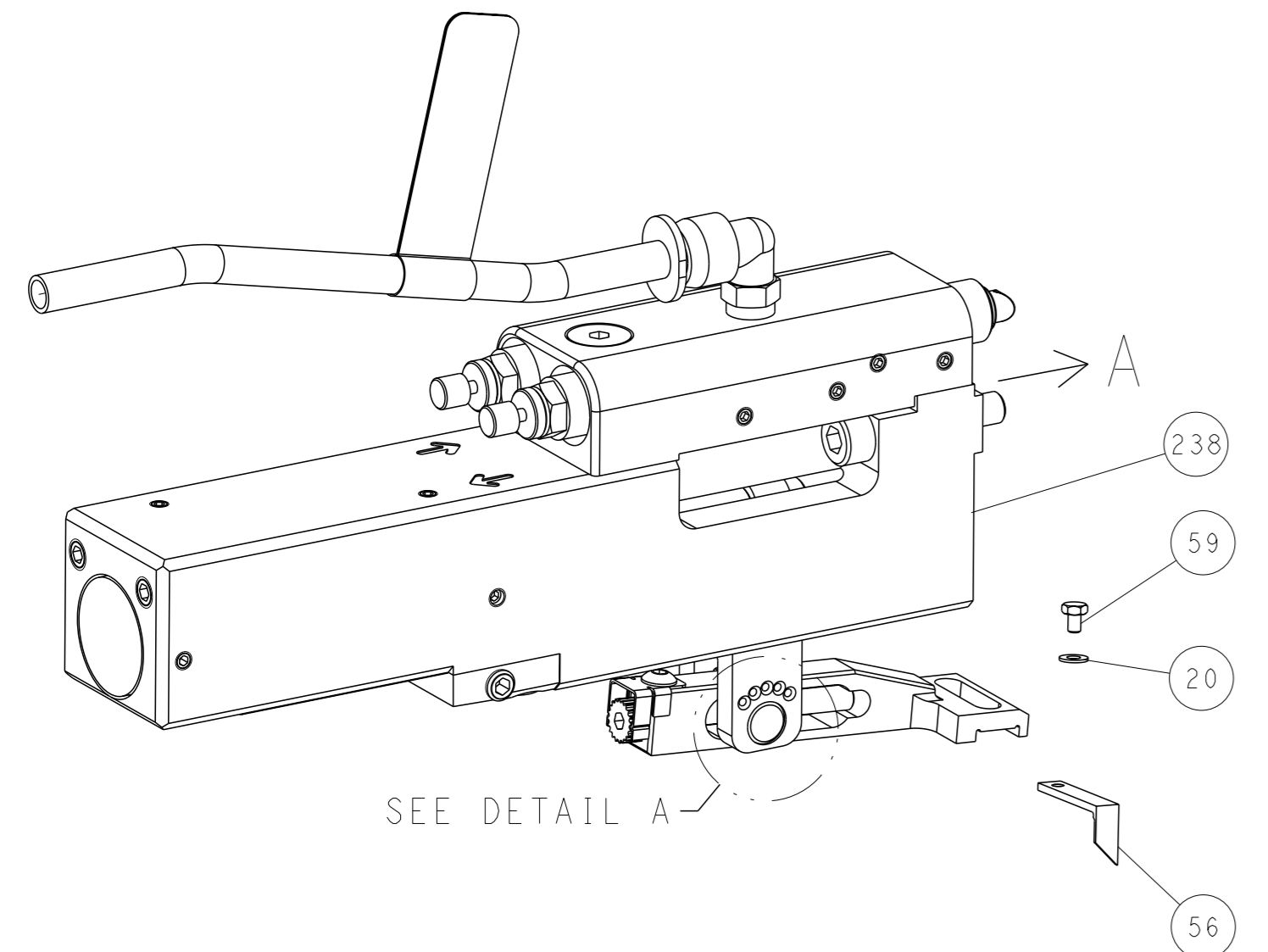
ATLANTIC VERSION  
Shown on sheets 1 of 4 & 2 of 4  
(Pacific version shown on sheets 3 of 4 & 4 of 4)

DIMENSIONS:		TOLERANCES UNLESS OTHERWISE SPECIFIED:		OWN: C. CHEN 13JUL2011	TE Connectivity Harrisburg, PA 17105-3608
mm		0 PLC ±		CHK: S. XI 13JUL2011	
		1 PLC ±		APVD: J. CRUZ 13JUL2011	NAME: Ocean Side Feed Applicator
MATERIAL:		2 PLC ±		PRODUCT SPEC:	SIZE: A1
		3 PLC ±		APPLICATION SPEC:	CAGE CODE: 00779
		4 PLC ±		WEIGHT:	DRAWING NO: 2151146
		ANGLES FINISH:		RESTRICTED TO:	SCALE: 1:2
				Customer Accessible Production Drawing	SHEET 1 OF 4
					REV E

LOC	DIST	REVISIONS					
		P	LYR	DESCRIPTION	DATE	OWN	APVD
A	66	-	-	SEE SHEET 1	-	-	-

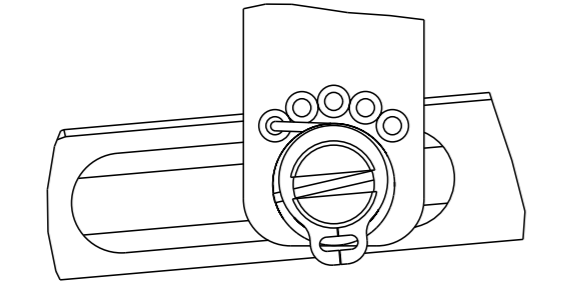
# FEED TYPE

## PNEUMATIC



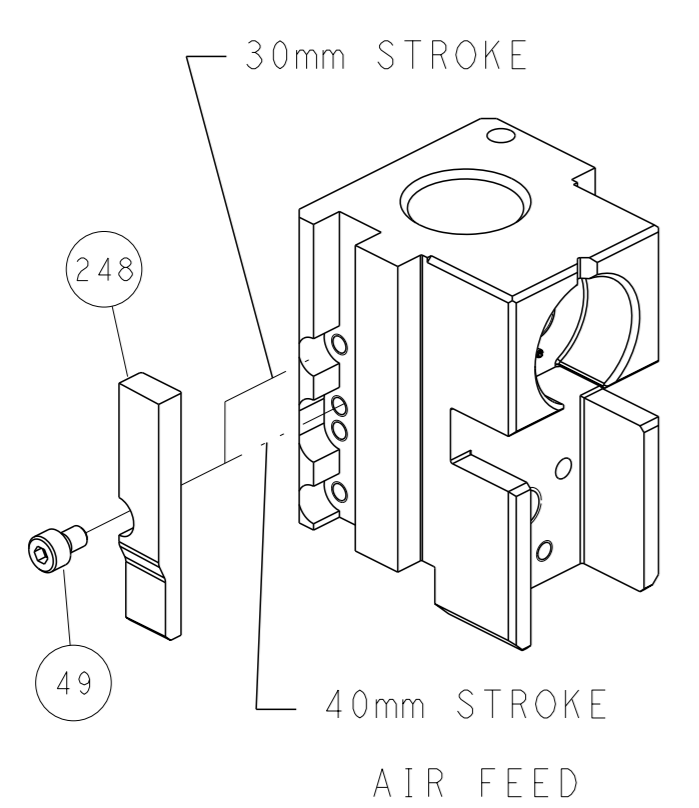
SEE DETAIL A

## FEED SPRING SETTING POSITION (SHOWN FROM REAR SIDE)

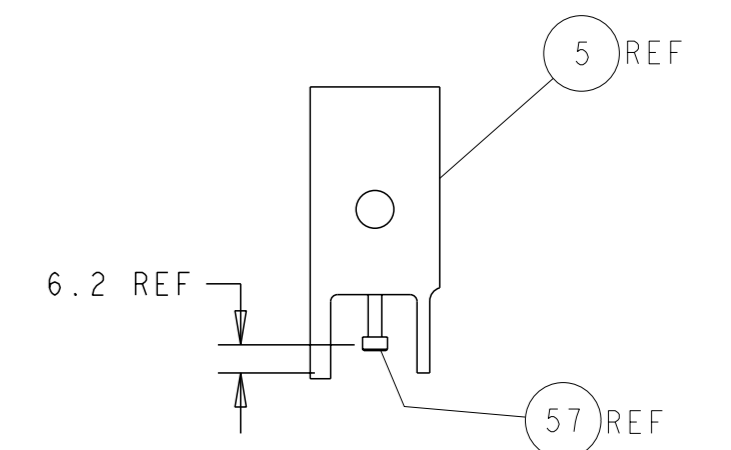
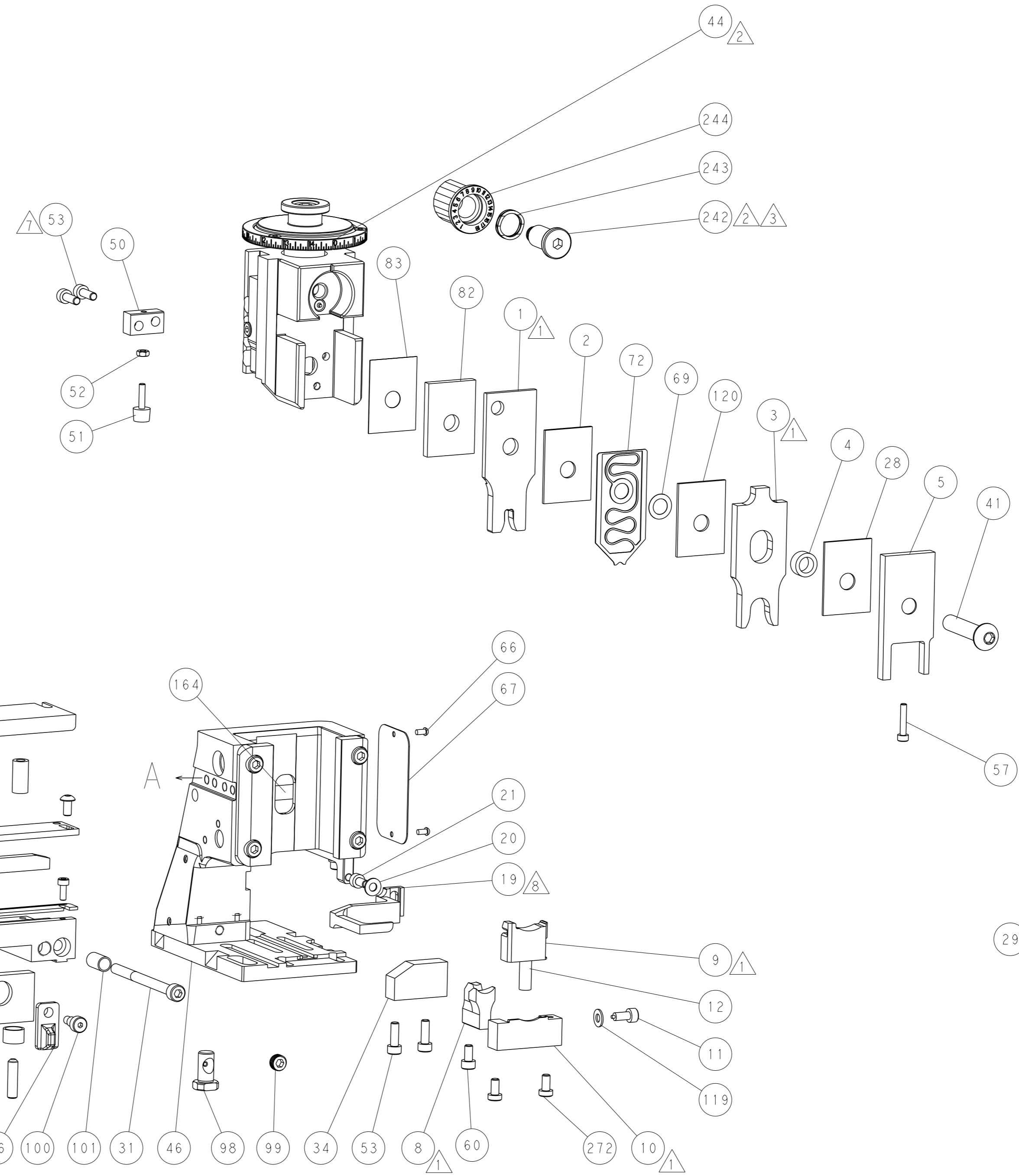


DETAIL A

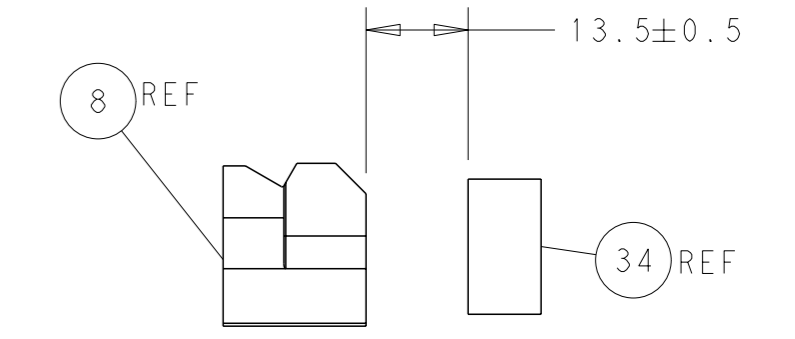
## CAM POSITION



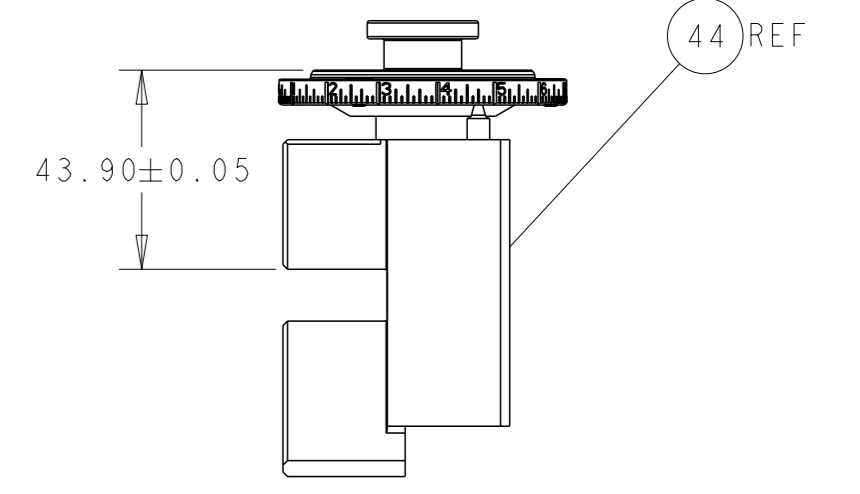
AIR FEED



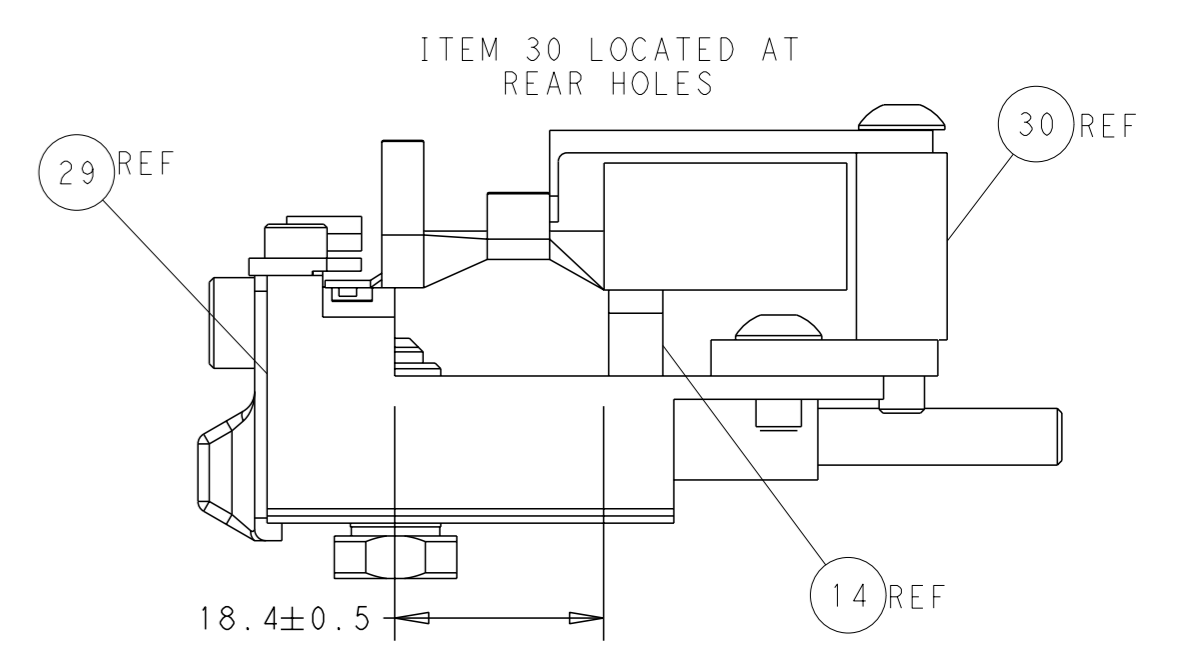
SHEAR DEPRESSOR DETAIL



TERMINAL SUPPORT LOCATION



RAM SET-UP



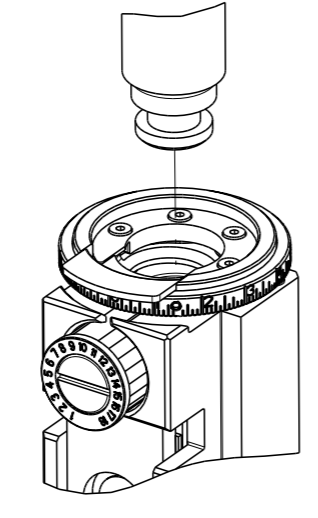
FEED TRACK POSITION GUIDE BY WIRE BARREL

**ATLANTIC VERSION**  
 Shown on sheets 1 of 4 & 2 of 4  
 (Pacific version shown on sheets 3 of 4 & 4 of 4)

<small>THIS DRAWING IS A CONTROLLED DOCUMENT FOR TYCO ELECTRONICS CORPORATION. IT IS SUBJECT TO CHANGE AND THE CONTROLLER'S ENGINEERING DEPARTMENT SHOULD BE CONTACTED FOR THE LATEST REVISION.</small>		DWN C. CHEN 13JUL2011 CHK S. XI 13JUL2011 APVD J. CRUZ 13JUL2011	TE Connectivity Harrisburg, PA 17105-3608
DIMENSIONS: mm TOLERANCES UNLESS OTHERWISE SPECIFIED: 0 PLC ± 1 PLC ± 2 PLC ± 3 PLC ± 4 PLC ± ANGLES FINISH ±		NAME Ocean Side Feed Applicator SIZE CAGE CODE DRAWING NO. 00779 ©=2151146 WEIGHT -	RESTRICTED TO - SCALE 1:2 SHEET 2 OF 4 REV E
MATERIAL:		Customer Accessible Production Drawing	

PART NUMBER	REVISION	DESCRIPTION	FEED TYPE
2-2151146-2	E	FINE CRIMP HEIGHT ADJUST	PNEUMATIC
7-2151146-7	A	CRIMP TOOLING KIT	-

PACIFIC VERSION TERMINATOR  
 INTERFACE ADAPTER



APPLICATOR DATA		
CRIMP	SIZE	TYPE
WIRE	4.57 mm [ .180 ]	F
INSUL	10.92 mm [ .430 ]	O
APPLICATOR INSTRUCTIONS 408-35042		

TERMINAL DATA: TE TERMINAL		TE CRIMP SPECIFICATION	
TERMINAL NAME: MAXI-POWER TIMER CONTACT			
WIRE STRIP LENGTH		INSULATION DIAMETER RANGE	
10.10-10.90 mm [ .398-.429 IN ]		∅ 7	
TERMINAL APPLICATION SPECIFICATION	114-18075	-	-

TERMINALS APPLIED				SEAL INSULATION DIAMETER RANGE
TE TERMINAL	TE TERMINAL	TE SEAL	TE SEAL	∅ 4.60-5.20
962936-1	2-962936-1	1355437-1		

WIRE SIZE	CRIMP HEIGHT mm [INCH]	CRIMP HEIGHT REFERENCE SETTING
6.00mm2	3.08 +/- 0.05 [ .121 +/- .002 ]	2.3
4.00mm2	2.74 +/- 0.05 [ .108 +/- .002 ]	5.9

- 1 RECOMMENDED SPARE PARTS
  - 2 REFER TO SUPPLIED INSTRUCTION SHEET FOR CLEANING, LUBRICATION AND STORAGE OF APPLICATOR.
  - 3 APPLY PART NUMBER 2-23419-6 LOCTITE TO THREADS OF ITEM 242.
  - 4 CRIMP HEIGHT REFERENCE SETTING WAS THE SETTING USED WHEN THE APPLICATOR WAS QUALIFIED AT THE FACTORY. ADJUSTMENT MAY BE NECESSARY WHEN RUNNING APPLICATOR IN THE FIELD.
  - 5 TERMINAL PITCH NOT COMPATIBLE WITH MECHANICAL FEED.
  - 6 APPLICATOR DOES NOT CUT CARRIER STRIP.
  - 7 THIS APPLICATOR APPLIES TERMINAL WITH A SEAL.
  - 8 CUT TO LENGTH AT ASSEMBLY.
  - 9 RELOCATE ITEM 19 TO BACK OF APPLICATOR.
10. UNLESS SPECIFIED OTHERWISE TORQUE VALUES SHALL BE USED PER DOCUMENT, 101-35000.

**\*WARNING**  
 ON INSTALLATION, SET WIRE DISC TO CRIMP HEIGHT REFERENCE SETTING FOR LARGEST WIRE SIZE. CRIMP HEIGHT REFERENCE SETTINGS GREATER THAN THE VALUE SHOWN MAY CAUSE DAMAGE TO THE CRIMP TOOLING, REFER TO THE INSTRUCTION SHEET FOR PROPER SETUP AND ADJUSTMENTS.

PACIFIC VERSION  
 Shown on sheets 3 of 4 & 4 of 4  
 (Atlantic version shown on sheets 1 of 4 & 2 of 4)

LOC	DIST	REV	DESCRIPTION	DATE	OWN	APVD
A	66	-	SEE SHEET 1	-	-	-

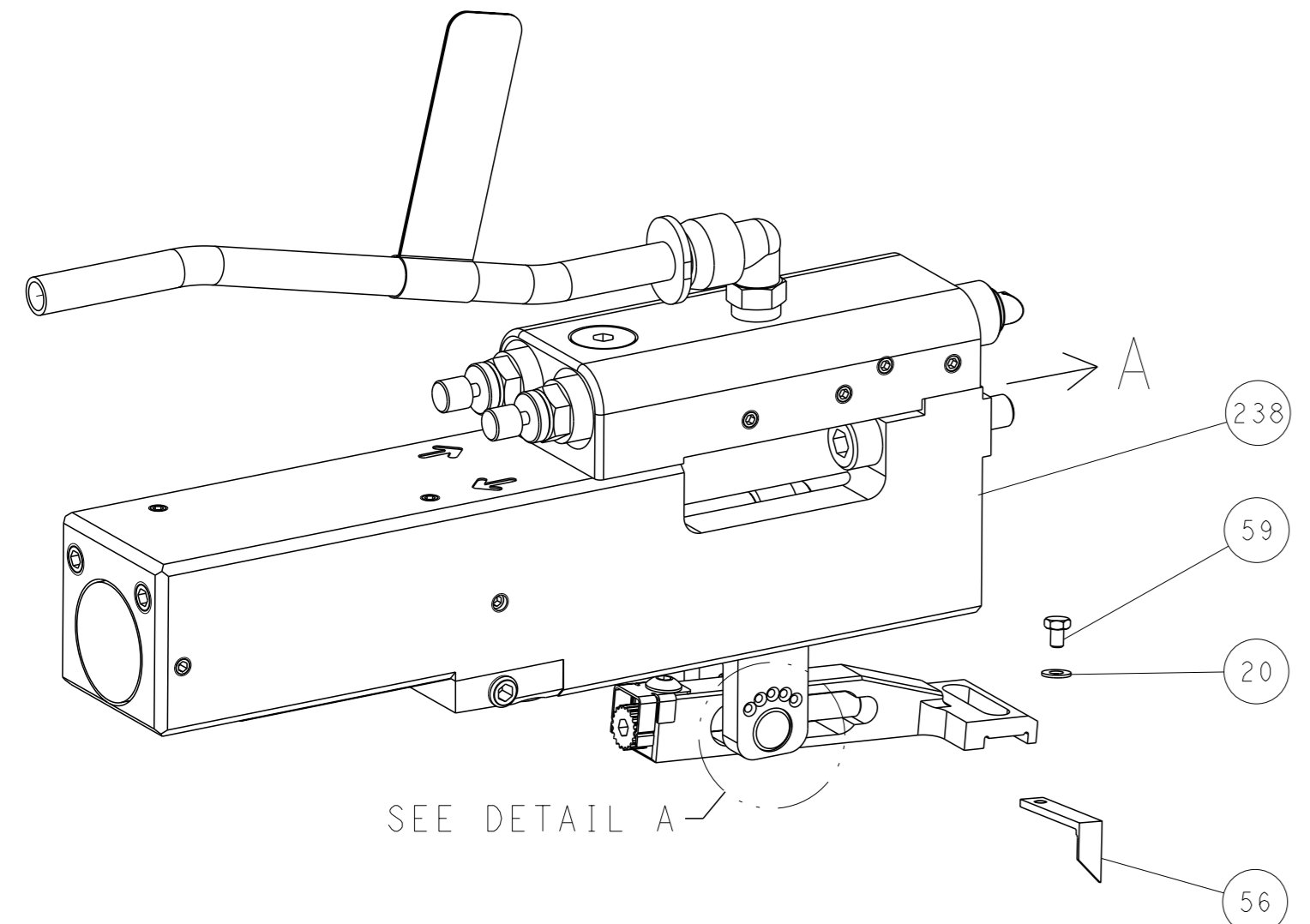
-	2	2168400-8	SHCS, LOW HEAD, RoHS, M4 X 16	273	
-	1	2119082-9	CAM, SNAIL, INSULATION ADJUSTMENT	244	
-	1	2079764-1	WASHER, WAVE SPRING, CREST-TO-CREST	243	
-	1	2119083-1	RETAINER, INSULATION DIAL	242	
-	1	2844940-2	AIR FEED MODULE	238	
-	REF	994970-2	COUNTER, MAGNETIC	164	
-	1	2119641-2	FEED CAM, AIR FEED	151	
-	1	2168083-8	SCR, SKT HD CAP, RoHS, M4 X 16	144	
-	2	2168083-9	SCR, SKT HD CAP, RoHS, M4 X 20	143	
-	1	2-1803583-7	APPLICATOR BASIC ASSEMBLY, SF	141	
-	1	1803516-2	RAM ASSEMBLY, SF PACIFIC	140	
-	1	1-455888-4	SPACER, CRIMPER	120	
-	1	1-18028-2	WASHER, FLAT, REG M4	119	
-	1	1-22281-8	SPRING, COMPRESSION	101	
-	1	980371-4	SCR, SKT HD SHLDR 5.0 DIA X 6.0	100	
-	1	2844908-1	SCREW, LOCKING	99	
-	1	2844907-1	POST, LOCKING	98	
-	2	2-18032-5	SCR, SET, FLT PNT, M5 X 20.0	97	
-	2	2168083-1	SCR, SKT HD CAP, RoHS, M3 X 8.0	95	
-	2	2168083-1	SCR, SKT HD CAP, RoHS, M3 X 8.0	85	
-	1	455888-3	SPACER, CRIMPER	83	
-	1	2-455888-8	SPACER, CRIMPER	82	
-	1	2119791-9	DEPRESSOR, WIRE	72	
-	1	1803607-3	DOCUMENTATION PACKAGE	71	
-	1	1803096-1	EXTENSION PLATE	70	
-	1	2119943-1	WASHER, SPACER	69	
-	1	2119740-1	TAG, IDENTIFICATION	67	
-	2	2168078-1	SCREW, DRIVE, RH, RoHS, 2 x .188	66	
-	1	5-18022-5	SCR, HEX HD CAP, M4 X 6.0	59	
-	1	1-2168083-3	SCR, SKT HD CAP, RoHS, M3 X 16	57	
-	1	1-1338683-1	FEED PAWL	56	
-	2	2168083-3	SCR, SKT HD CAP, RoHS, M4 X 12.0	53	
-	1	5018030-1	NUT, HEX, REG, RoHS, M3	52	
-	1	1-811242-0	BUMPER, HOLD DOWN	51	
-	1	690753-2	SPACER, TONKER	50	
-	1	18023-9	SCR, SKT HD CAP M4 X 6.0	49	
-	1	1803602-2	SCR, BHSC, RoHS (M8 X 40)	41	
-	1	1-1752356-2	SUPPORT, TERMINAL	34	
-	2	1-2079383-3	SCR, BHSC, RoHS (M4 X 25)	33	
-	1	2168083-6	SCR, SKT HD CAP, RoHS, M5 X 65	31	
-	2	3-2844962-5	SPACER, CYLINDRICAL, STRIP GUIDE	30	
-	1	2844938-9	PLATE, STRIP GUIDE	29	
-	1	1-455888-0	SPACER, CRIMPER	28	
-	2	22283-1	SPRING, COMPRESSION	27	
-	1	356835-1	LEVER, DRAG RELEASE	26	
-	1	240792-1	DRAG, TERMINAL	25	
-	1	2-1320928-2	STRIP GUIDE	24	
-	1	2168083-2	SCR, SKT HD CAP, RoHS, M4 X 8.0	21	
-	2	1-18028-2	WASHER, FLAT, REG M4	20	
-	1	1803013-1	STRIPPER, SIDE FEED	19	
-	1	2-690438-2	FRONT STRIP GUIDE	18	
-	2	2079383-4	SCR, BHSC, RoHS (M4 X 8)	15	
-	1	1633782-2	FENCE	14	
-	1	4-22280-7	SPRING, COMPRESSION	12	
-	1	1-356885-3	STOP, SHEAR	11	
-	1	2119805-7	SHEAR HOLDER, FRONT	10	
-	1	1-318059-6	FLOATING SHEAR, FRONT	9	
-	1	1633930-3	ANVIL, COMBINATION	8	
-	-	-	-	7	
-	-	-	-	6	
-	1	1803080-4	DEPRESSOR, SHEAR	5	
-	1	5-238011-4	BLOCK, CRIMPER SPACER	4	
-	1	1-1633965-7	CRIMPER, INSULATION O PREMIUM	3	
-	1	1-455888-2	SPACER, CRIMPER	2	
-	1	3-1752057-5	CRIMPER, WIRE PREMIUM, STEPPED	1	
-	77	-22	PART NO	DESCRIPTION	ITEM NO

DIMENSIONS:		TOLERANCES UNLESS OTHERWISE SPECIFIED:		APPROVED:		DATE:	
mm	0 PLC ±	1 PLC ±	2 PLC ±	3 PLC ±	4 PLC ±	APVD	DATE
	ANGLES	FINISH					
MATERIAL				WEIGHT			

OWN	C. CHEN	13 JUL 2011
CHK	S. XI	13 JUL 2011
APVD	J. CRUZ	13 JUL 2011
PRODUCT SPEC		
APPLICATION SPEC		
SIZE	CAGE CODE	DRAWING NO
A1	00779	2151146
Customer Accessible Production Drawing	SCALE	1:2
	SHEET	3 of 4
	REV	E

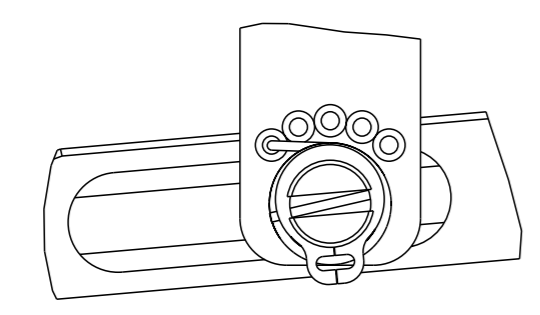
LOC	DIST	REVISIONS					
A	66	P	LYR	DESCRIPTION	DATE	OWN	APVD
		-		SEE SHEET 1	-	-	-

### FEED TYPE PNEUMATIC



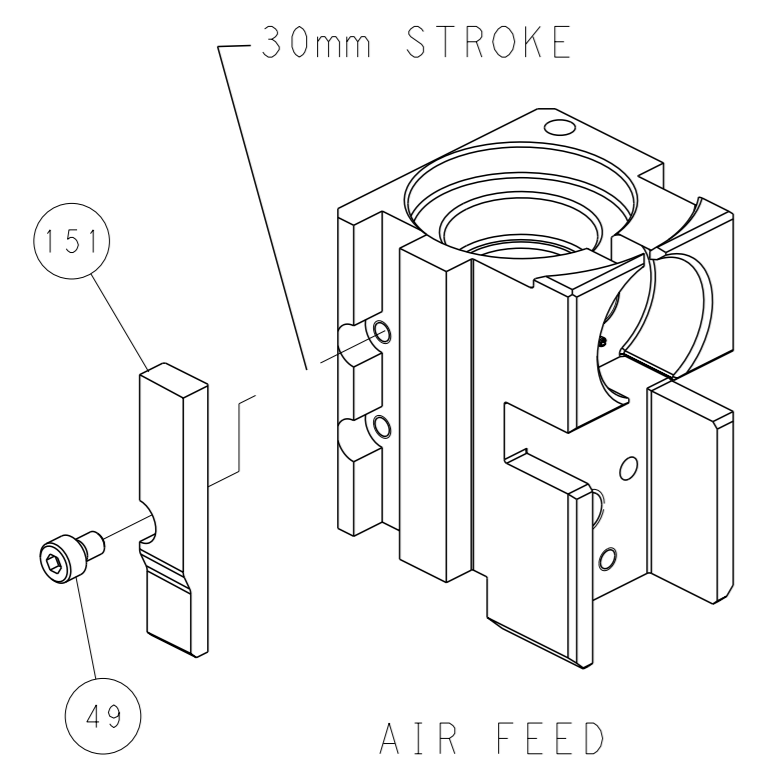
SEE DETAIL A

### FEED SPRING SETTING POSITION (SHOWN FROM REAR SIDE)

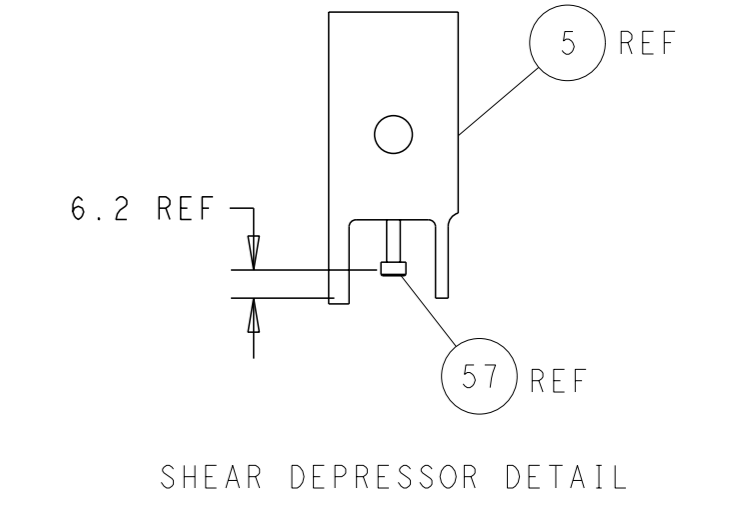
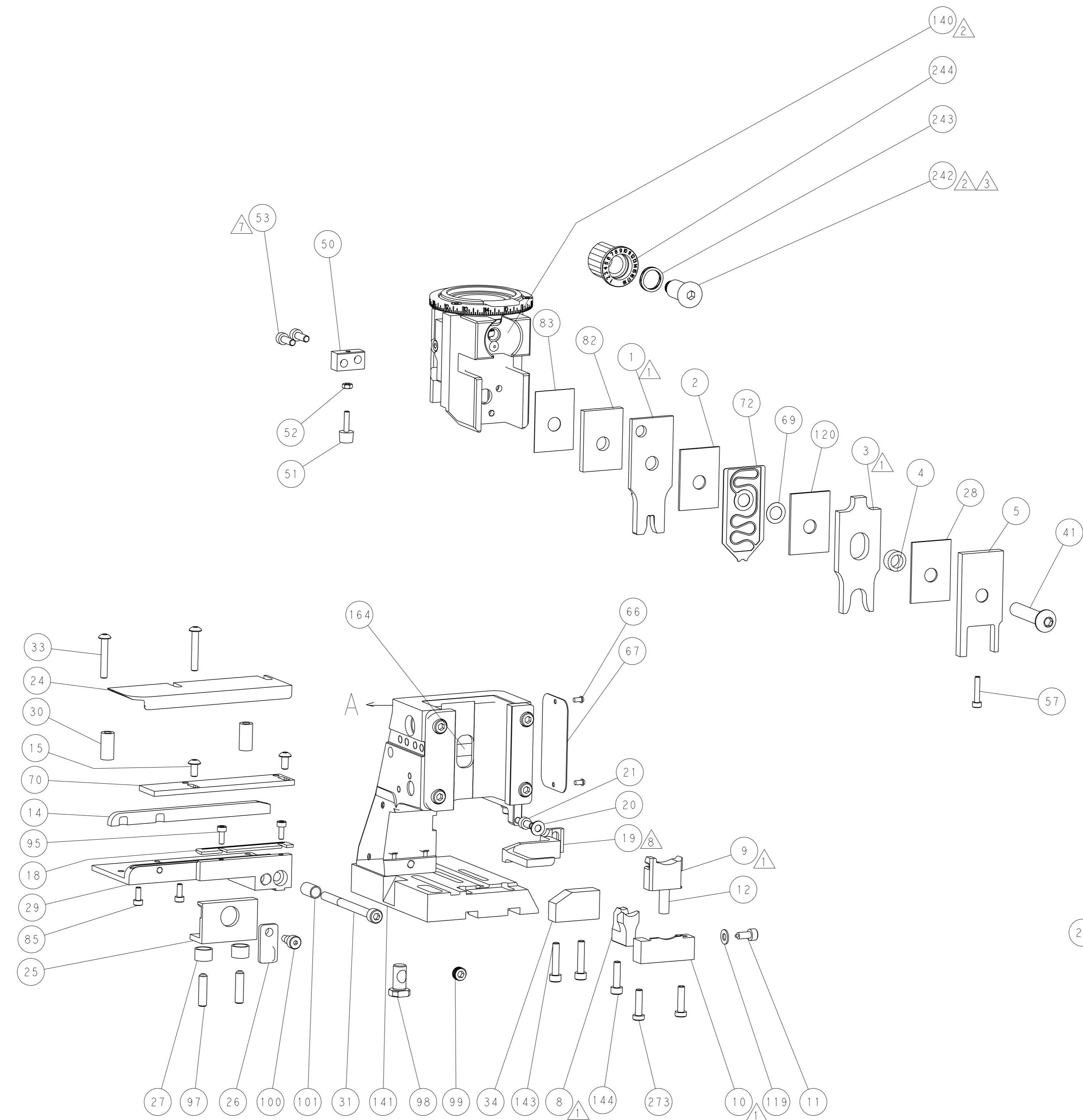


DETAIL A

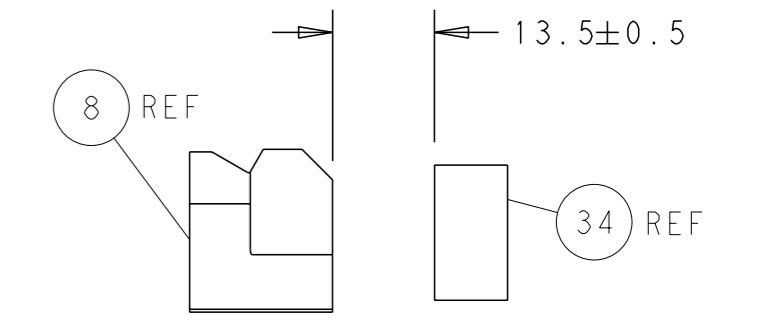
### CAM POSITION



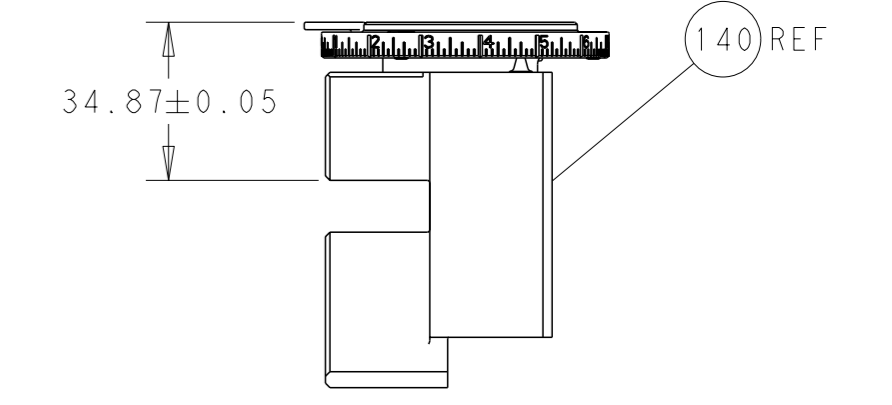
AIR FEED



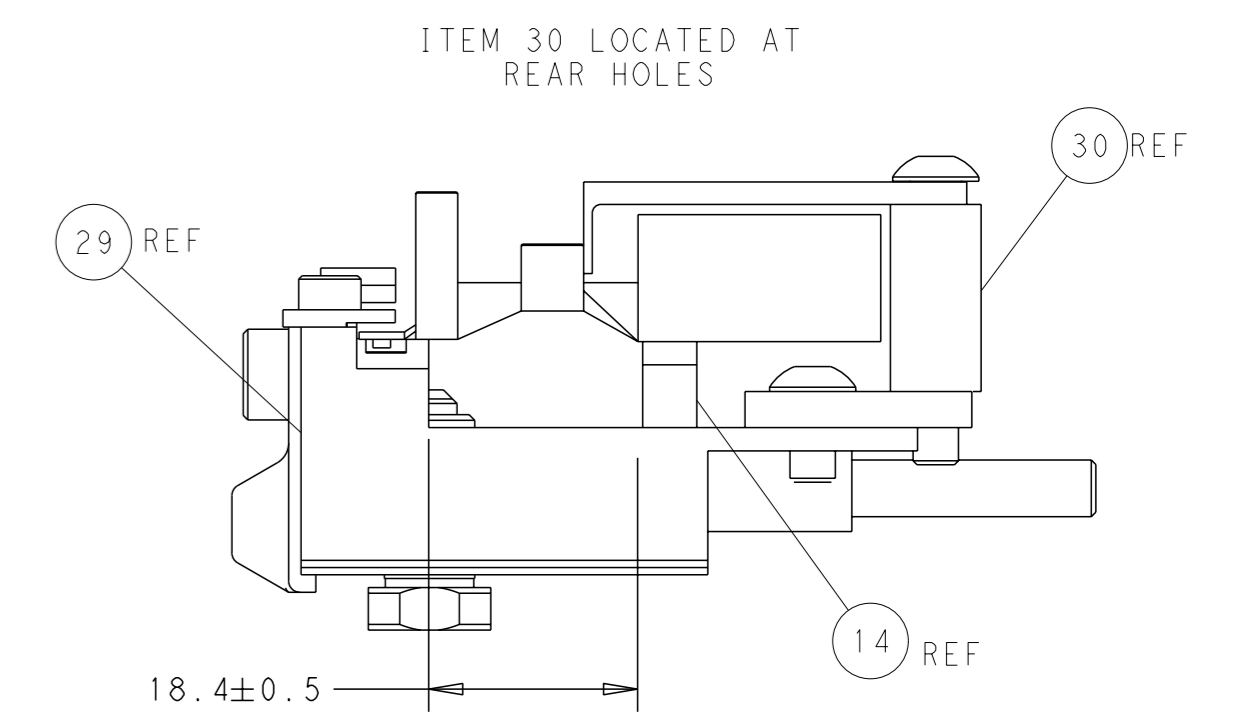
SHEAR DEPRESSOR DETAIL



TERMINAL SUPPORT LOCATION



RAM SET-UP



FEED TRACK POSITION GUIDE BY WIRE BARREL

**PACIFIC VERSION**  
 Shown on sheets 3 of 4 & 4 of 4  
 (Atlantic version shown on sheets 1 of 4 & 2 of 4)

<small>THIS DRAWING IS A CONTROLLED DOCUMENT FOR TYCO ELECTRONICS CORPORATION. IT IS SUBJECT TO CHANGE AND THE CONTROLLER'S ENGINEERING DEPARTMENT SHOULD BE CONTACTED FOR THE LATEST REVISION.</small>		OWN: C. CHEN 13JUL2011 CHK: S. XI 13JUL2011 APVD: J. CRUZ 13JUL2011	NAME: TE Connectivity Harrisburg, PA 17105-3608
DIMENSIONS: mm TOLERANCES UNLESS OTHERWISE SPECIFIED: 0 PLC ± 1 PLC ± 2 PLC ± 3 PLC ± 4 PLC ± ANGLES FINISH *	WEIGHT: - SCALE: 1:2 SHEET: 4 of 4 REV: E	SIZE: A1 CAGE CODE: 00779 DRAWING NO: 2151146	RESTRICTED TO: -
MATERIAL: -		Customer Accessible Production Drawing	