



**ANATECH ELECTRONICS INC**  
RF & Microwave Filters & Products

# 1500 MHz LC Band Pass Filter

**Part Number: AE1500B5342**



## Electrical Specifications

**Center Frequency:** 1500 MHz  
**0.1dB Passband:** 1495 MHz to 1505 MHz  
**Rejection1:** 44dB Min. @ 750 MHz  
**Rejection2:** 11dB Min. @ 2250 MHz  
**Rejection3:** 47dB Min. @ 3000 MHz  
**Rejection4:** 28dB Min. @ 3750-15000 MHz  
**Impedance:** 50 Ohms

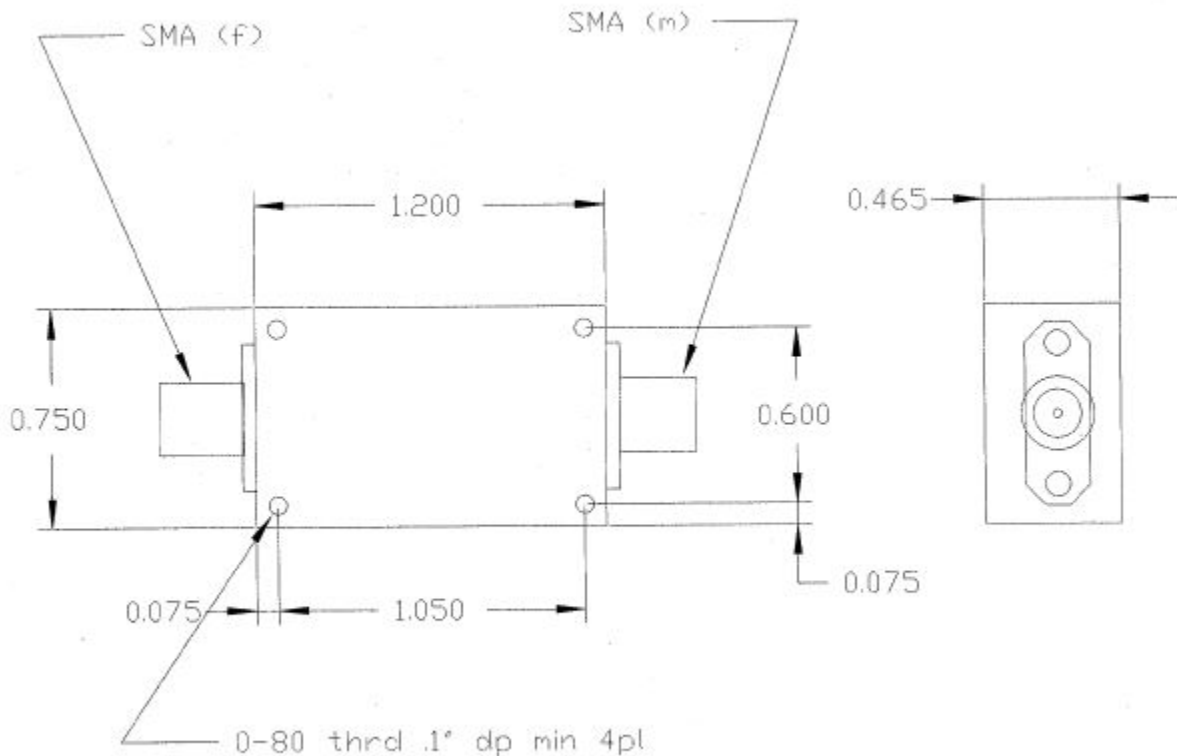
## Mechanical

**Mounting Method:** Threaded Mounting Holes  
**Connector Type:** SMA(F) & SMA(M)  
**Dimensions:** 1.2" X 0.75" x 0.465"

## Environmental

**Operating Temperature:** -25°C to +70°C  
**Storage Temperature:** -40°C to +90°C  
**Shock:** 10 G. 11ms  
**Vibration:** 10 G. 5 to 200Hz

## Outline Drawing:



2 decimal places: +/-0.01 inches [+/- 0.3mm]  
 3 decimal places: +/- 0.005 inches [+/- 0.13mm]  
 Angles: +/- 1 Deg.

*When max dimensions are called out the above tolerances do not apply as long as it is under the max call out.*

**70 Outwater Lane Phone: (973) 772-4242**  
**Garfield, NJ 07026 Fax : (973) 321-3941**

**Email: [sales@anatechelectronics.com](mailto:sales@anatechelectronics.com)**  
**Web: [www.anatechelectronics.com](http://www.anatechelectronics.com)**



**ANATECH ELECTRONICS INC**  
RF & Microwave Filters & Products

# 1500 MHz LC Band Pass Filter

**Part Number: AE1500B5342**

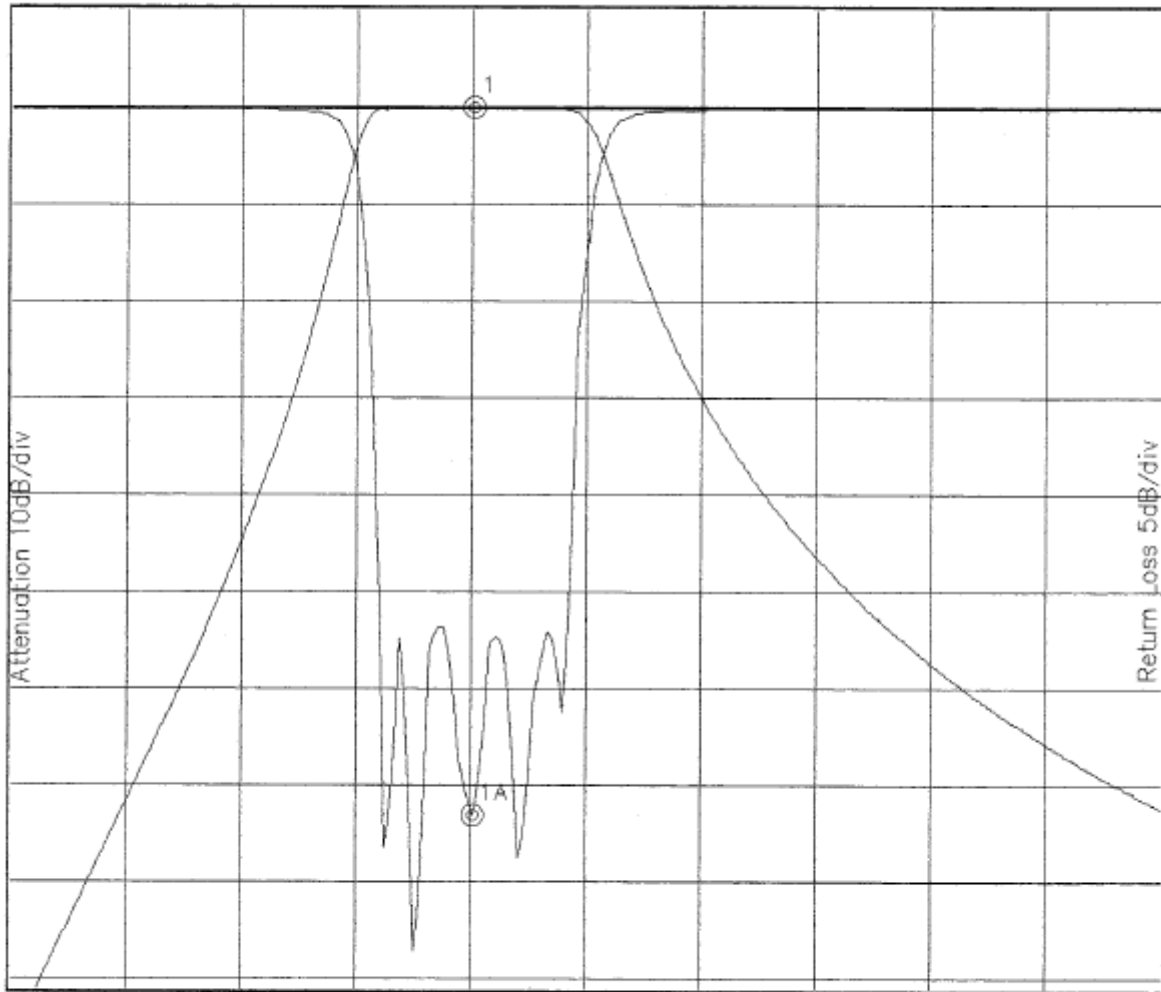


## Simulation Plot:

B5342A.lad

DEC 6, 1999

Attenuation/Return Loss



Attenuation Start: 500.0MHz Stop: 3.0GHz

Return Loss Start: 500.0MHz Stop: 3.0GHz

Offset -0.4347dB

Marker 1 Freq 1.502GHz Atten 0.066dB

Marker 1A Freq 1.502GHz Ret Loss -35.361dB

**Note:** This is a simulation plot. Actual results may differ once the product is implemented.

70 Outwater Lane Phone: (973) 772-4242  
Garfield, NJ 07026 Fax : (973) 321-3941

Email: [sales@anatechelectronics.com](mailto:sales@anatechelectronics.com)  
Web: [www.anatechelectronics.com](http://www.anatechelectronics.com)