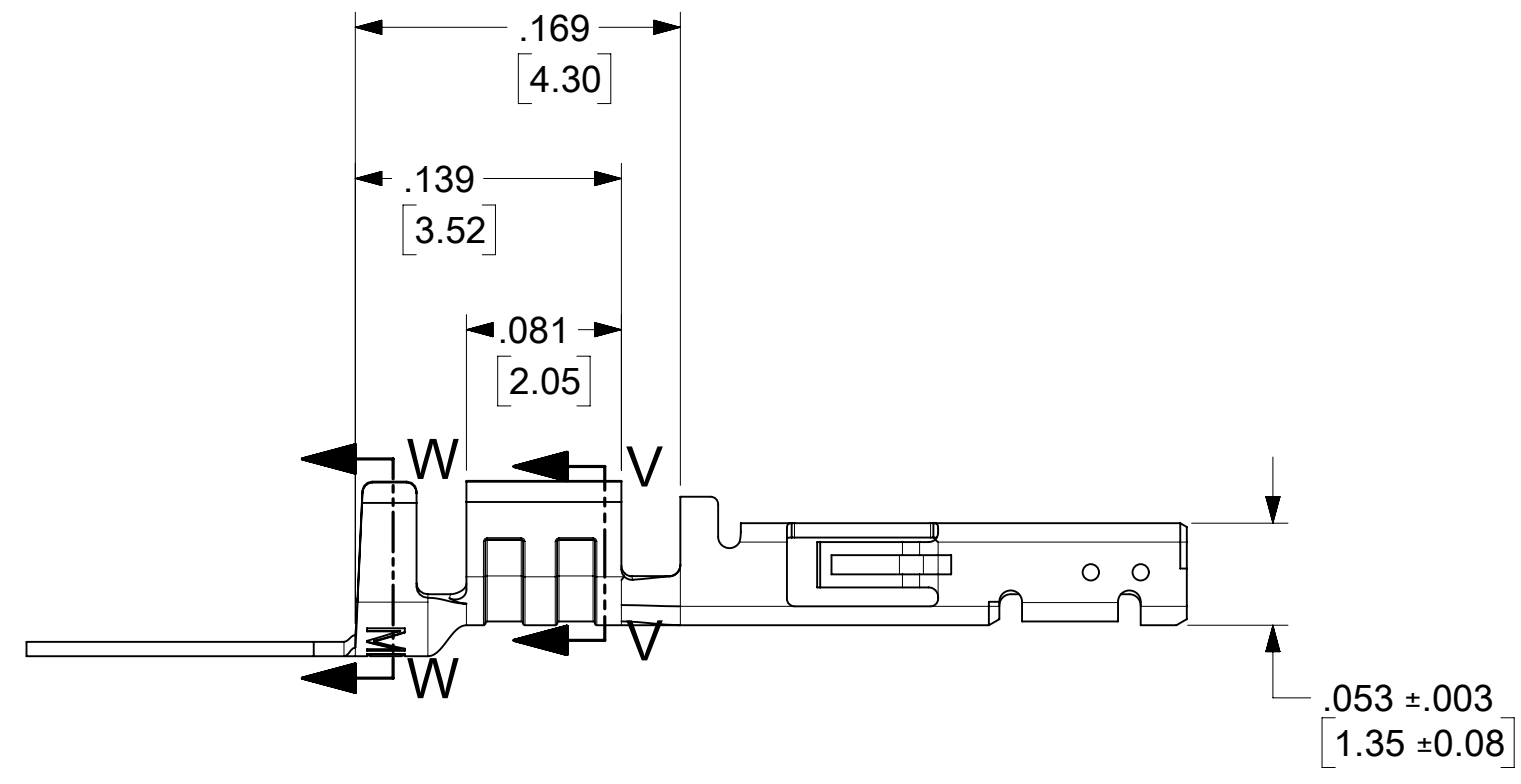
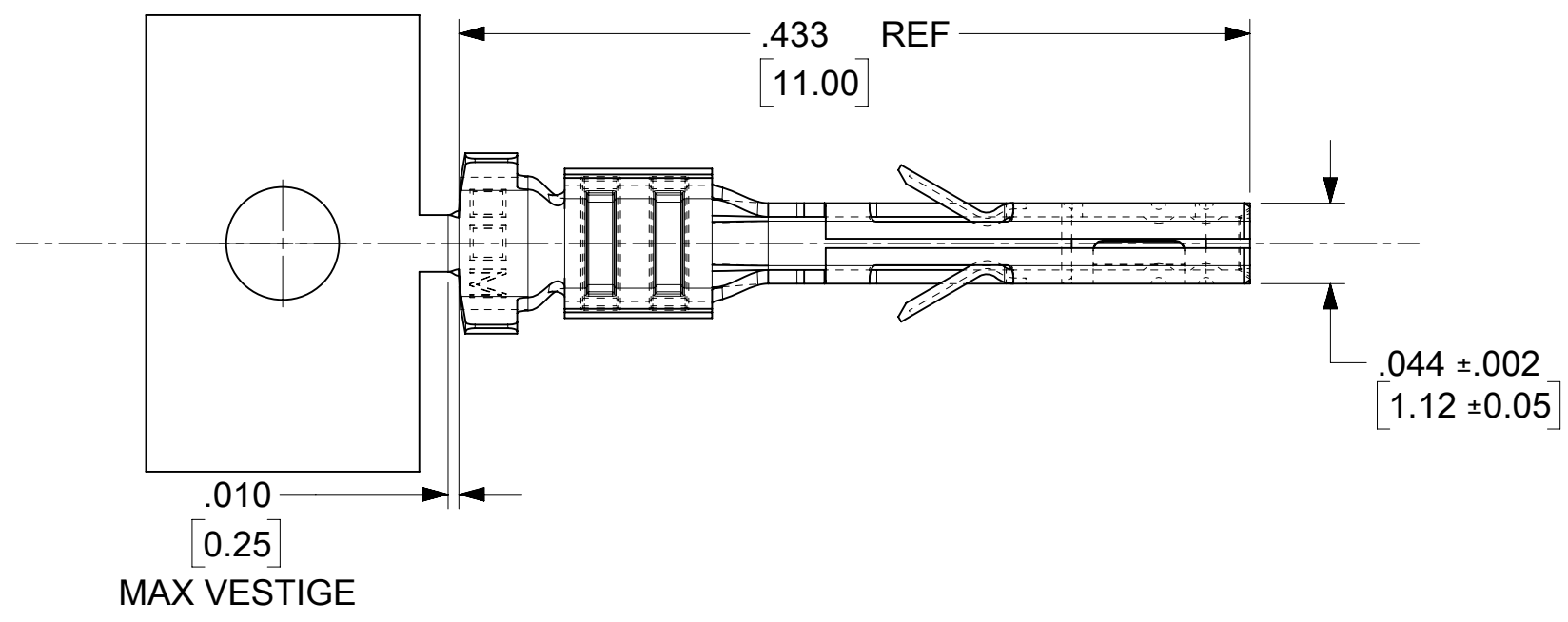
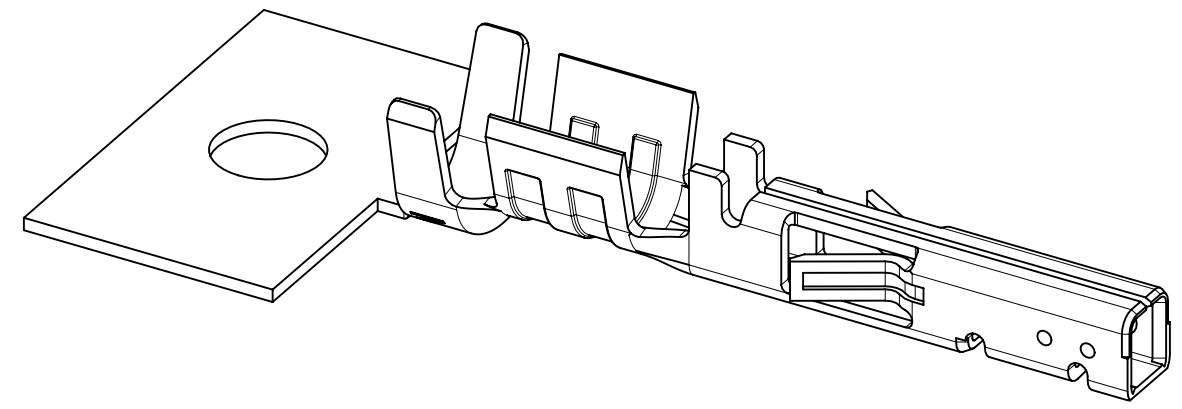
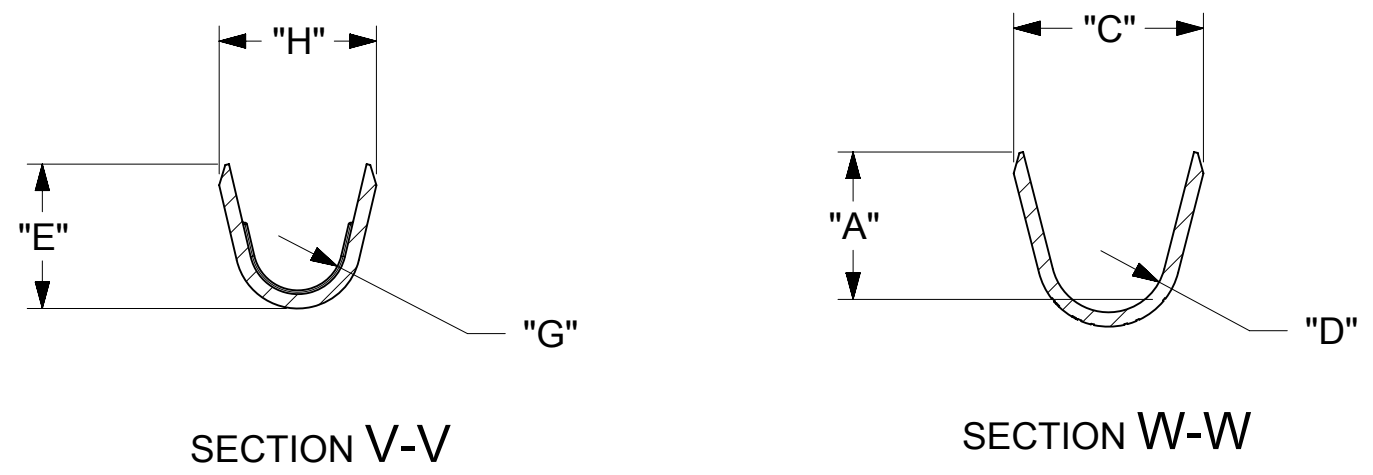


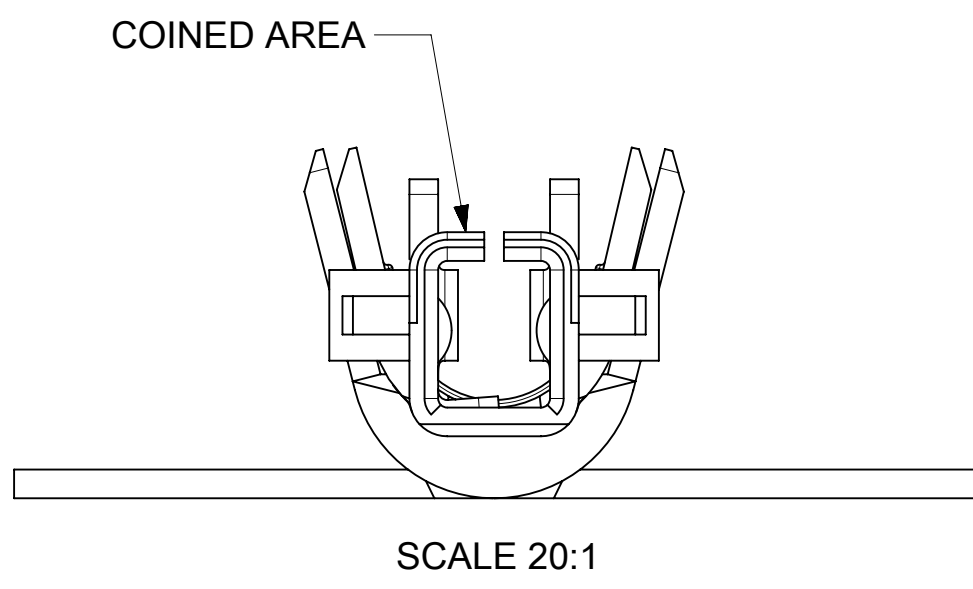
12	11	10	9	8	7	6	5	4	3	2	1
WIRE SIZE	MAX INSULATION	"A" ± .012 ± 0.30	"C" ± .012 ± 0.30	"D" ± .005 ± 0.13	"E" ± .012 ± 0.30	"G" ± .005 ± 0.13	"H" ± .012 ± 0.30				
26-30	.050/1.27	.075/1.91	.083/2.10	.025/0.64 R.	.058/1.47	0.20/0.51 R.	.065/1.65				

MATERIAL NUMBER	PLATING	WIRE SIZE	FORM
43030-0024	A	26-30	CHAIN



NOTES

- 1) MATERIAL: PHOSPHOR BRONZE ALLOY
- 2) TERMINAL PLATING (POST PLATED):  
"A" - .000100/(0.00254) MIN. TIN OVERALL  
OVER .000050/(0.00127) MIN. NICKEL PLATE OVERALL.
- 3) PRODUCT SPECIFICATION: PS-43045, PS-43650, PS-44300-001.
- 4) PACKAGING SPECIFICATION: PK-43030-001 (REEL), PK-43030-003 (LOOSE).
- 5) TERMINAL FOR USE IN A MICRO FIT RECEPTACLE #43025-\*\*\*\*, 43645-\*\*\*\*, 44133-\*\*\*\*, 171850-\*\*\*\*, AND 172952-\*\*\*\*.
- 6) FOR TERMINAL ORIENTATION IN RECEPTACLE SEE DRAWINGS FOR RECEPTACLES.
- 7) THIS TERMINAL IS DESIGNED IN METRIC.
- 8) MOLEX RECOMMENDS THE USE OF MICRO-FIT TEST PLUG (SERIES 44242) WHENEVER CONTINUITY TESTING IS PERFORMED. TEST PLUGS MUST NOT BE USED TO MAKE OR BREAK UNDER LOAD. MOLEX DOES NOT RECOMMEND USING STANDARD MATING COMPONENTS (SERIES 43020, 43045, 43640, 43650, OR 43031) FOR HARNESS TESTING PURPOSES.
- 9) TEXT ON PART IS FOR REFERENCE ONLY. TEXT AND TEXT LOCATION MAY VARY DEPENDING ON PART NUMBER AND/OR TOOL.



<b>FUNCTIONAL SYMBOLS</b> $\frac{E}{A} = 0$ $\frac{E}{C} = 0$ $\frac{E}{P} = 0$ <b>DIVISIONAL SYMBOLS</b>	THIS DRAWING CONTAINS INFORMATION THAT IS PROPRIETARY TO MOLEX ELECTRONIC TECHNOLOGIES, LLC AND SHOULD NOT BE USED WITHOUT WRITTEN PERMISSION											
	DIMENSION UNITS		SCALE		CURRENT REV DESC: CORRECT 3.52 DIMENSION							
	INCH/MM		10:1									
	GENERAL TOLERANCES (UNLESS SPECIFIED)				EC NO: 730513		2022/11/05		<b>PRODUCT CUSTOMER DRAWING</b> MICRO-FIT (3.0) POST PLATE TIN FEMALE CRIMP TERMINAL DOCUMENT NUMBER: 430300000-SD DOC TYPE: PSD DOC PART: 000 REVISION: A2			
4 PLACES ±		MM		DRWN: SETHH6		2022/12/01						
3 PLACES ±		INCH		CHK'D: MKIPPER		2023/05/04						
2 PLACES ± 0.25		± 0.014		APPR: XQZHANG								
1 PLACE ± 0.35		±		INITIAL REVISION:				MATERIAL NUMBER		CUSTOMER		
0 PLACES ±		±		DRWN: CSLAFTER		2016/12/2		43030		GENERAL MARKET		
ANGULAR TOL ± 0.5°		± 0.5°		APPR: FSMITH		2016/12/10		SERIES		SHEET NUMBER		
DRAFT WHERE APPLICABLE MUST REMAIN WITHIN DIMENSIONS				THIRD ANGLE PROJECTION		DRAWING		C-SIZE		1 OF 1		