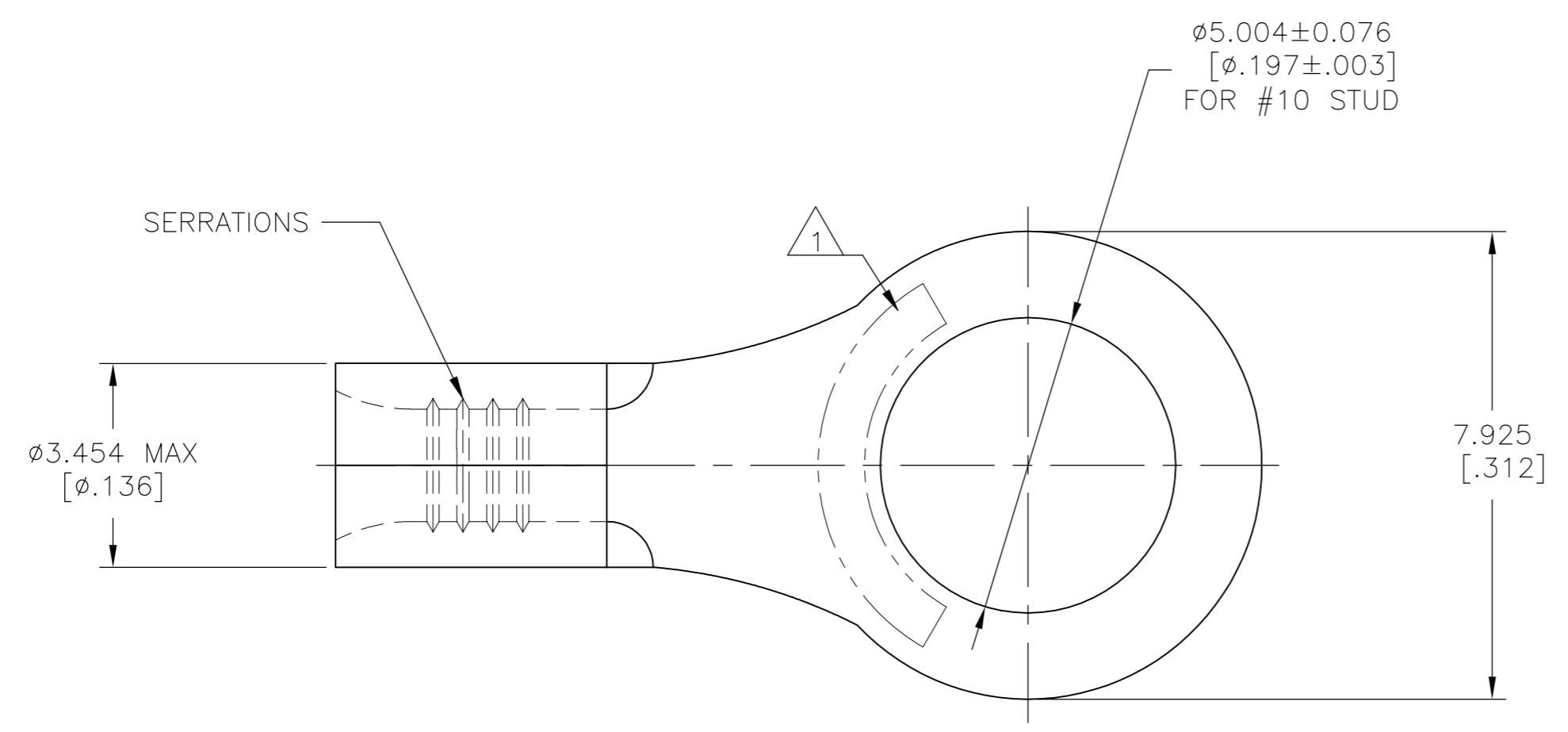


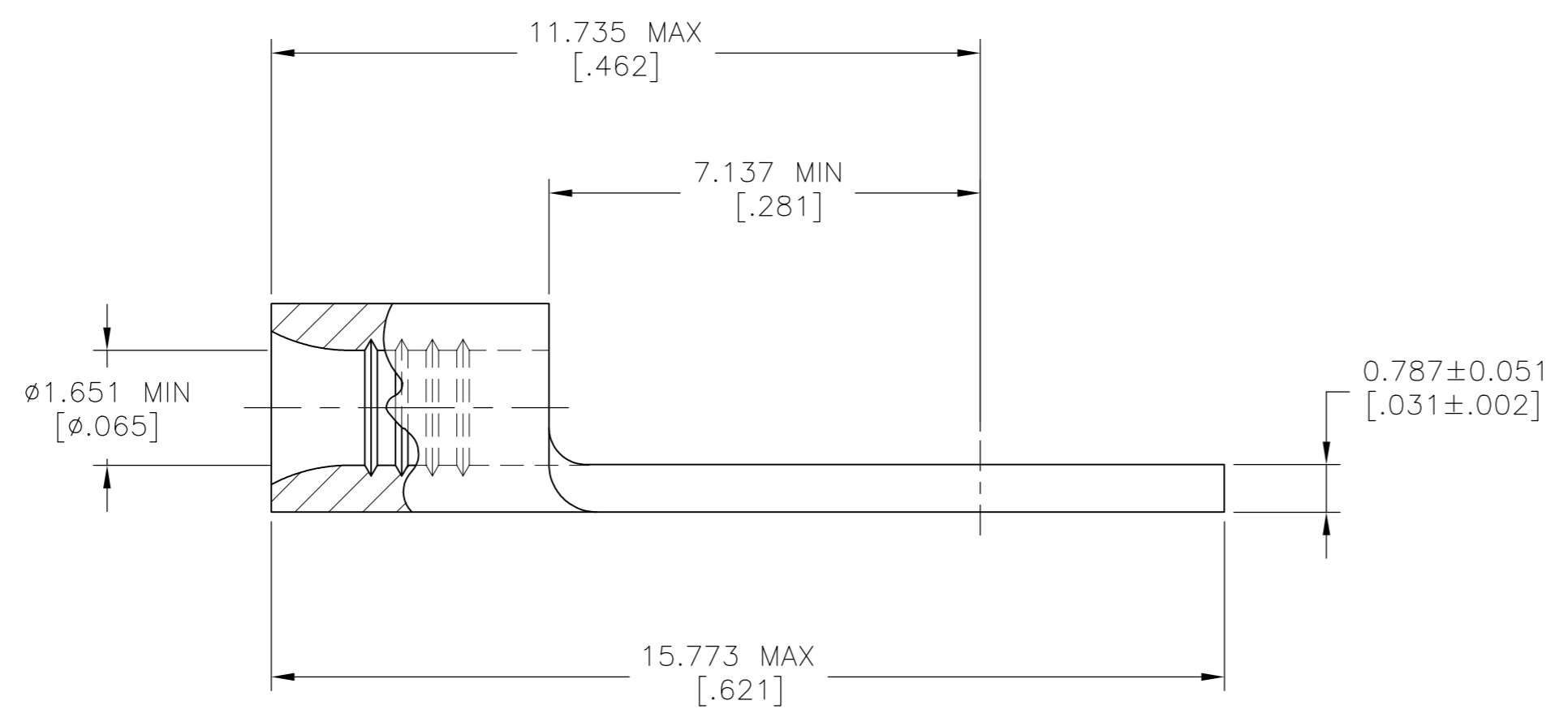
THIS DRAWING IS UNPUBLISHED.  
 RELEASED FOR PUBLICATION  
 © COPYRIGHT - TE Connectivity Ltd. ALL RIGHTS RESERVED.

REVISIONS					
P	LTR	DESCRIPTION	DATE	DWN	APVD
	H	REV PER 0G3A-0600-03	30SEPT03	JR	MS
	H1	REVISED PER ECO-17-008806	16FEB2018	RS	DR



<b>AMP</b> WIRE RANGE	Listed FILE E13288
22-16 AWG STRANDED	22-16 AWG STRANDED

- 1 STAMP AMP 22-18\* APPROX AS SHOWN  
22-16 TERMINALS ARE STAMPED 22-18 IN  
ACCORDANCE WITH MILITARY SPECIFICATION  
SAE AS7928, COMMERCIAL WIRE RANGE IS  
22-16
- 2 TIN PLATE 0.00254[.000100] MIN THK
- 3 NOTE DELETED



1000	LOOSE PIECE	30693
QTY	PACKAGE TYPE	PART NO.

<b>AMP INCORPORATED CUSTOMER SERVICE SYSTEMS</b>		MAX RECOMMENDED OPERATING TEMPERATURE: 170°C[338°F]		THIS DRAWING IS A CONTROLLED DOCUMENT.		DWN TA BRINKMAN 2-3-93		<b>TE</b> TE Connectivity Ltd.	
FOR ADDITIONAL PRODUCT INFORMATION OR COPIES OF DRAWINGS AND TECHNICAL DOCUMENTS	PRODUCT INFORMATION CENTER 1-800-522-6752	VOLTAGE RATING: N/A	DIMENSIONS: mm [INCHES]		TOLERANCES UNLESS OTHERWISE SPECIFIED:		CHK DA PATTERSON 2-3-93	NAME	
FOR APPLICATION	TOOLING ASSISTANCE CENTER 1-800-722-1111	CIRCULAR MIL AREA: 0.26-1.65mm <sup>2</sup> [509-3,260] STRANDED			0 PLC ± - 1 PLC ± - 2 PLC ± - 3 PLC ± 0.127[.005] 4 PLC ± - ANGLES ± -		APVD DA PATTERSON 2-3-93	TERMINAL, RING TONGUE, BUDGET 22-16 AWG	
TOOLING INFORMATION	1-800-722-1111	MATERIAL COPPER ASTM B152		FINISH TIN PLATE 2		PRODUCT SPEC UL 486 A-B		APPLICATION SPEC	
FOR ORDER ENTRY	1-800-526-5142	THIS DRAWING IS A CONTROLLED DOCUMENT FOR AMP INCORPORATED. IT IS SUBJECT TO CHANGE AND THE CONTROLLING ENGINEERING ORGANIZATION SHOULD BE CONTACTED FOR THE LATEST REVISION.		WEIGHT		SCALE 10:1		RESTRICTED TO	
				CUSTOMER DRAWING		SIZE A2 CAGE CODE 00779 DRAWING NO. C-30693		SHEET 1 of 1 REV H1	