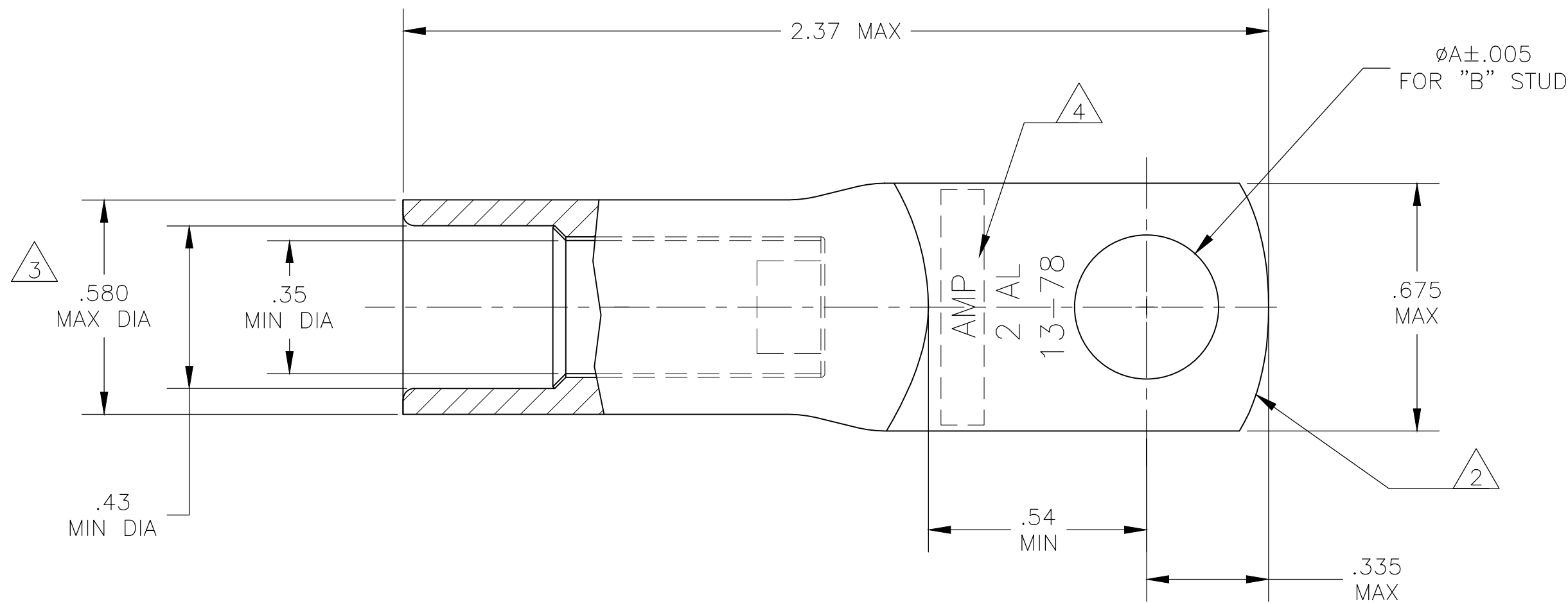
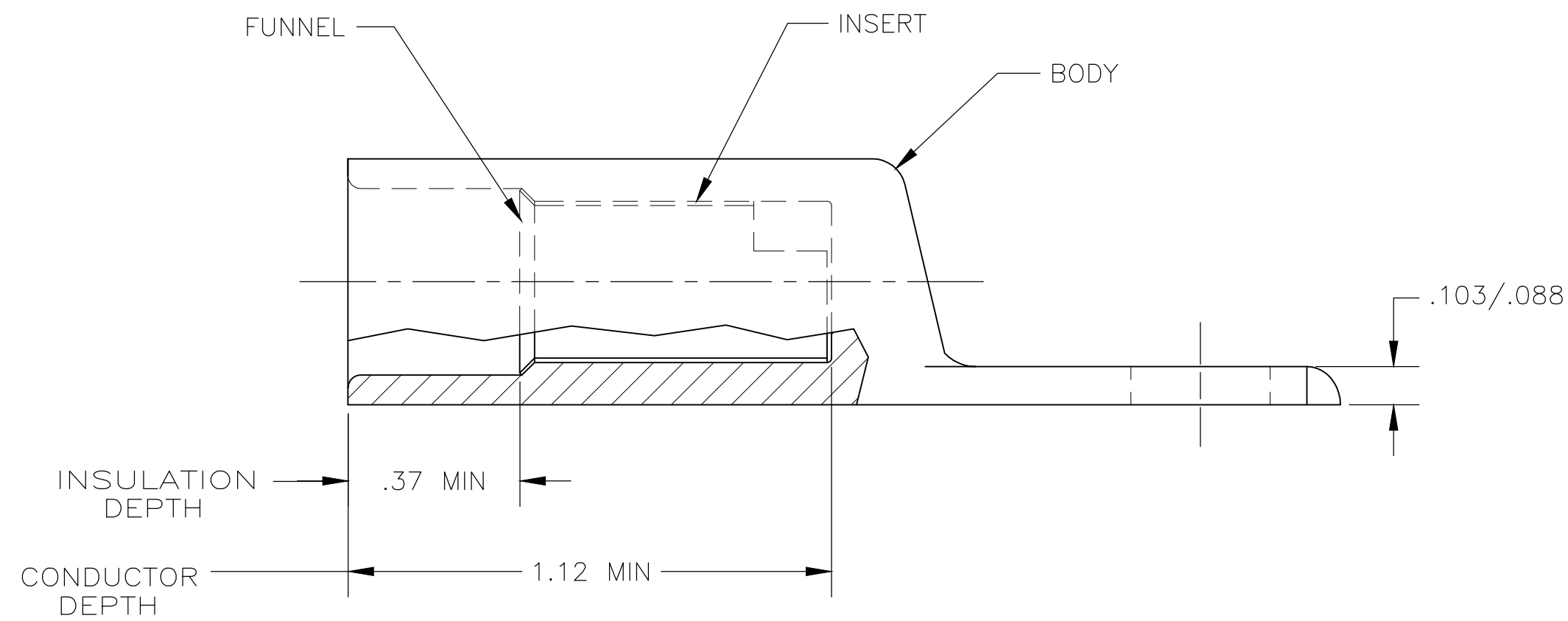


REVISIONS					
P	LTR	DESCRIPTION	DATE	DWN	APVD
G		REV PER ECO 20-015601	11-9-20	CT	PD



- 1 WIRE INSULATION: .367-417 DIA
- 2 THE TONGUE RADIUS FEATURE IS NOT A TOOLING CONTROLLED DIMENSION AND MAY NOT BE A TRUE RADIUS.
- 3 .020 FLASH PERMITTED ON WIRE BARREL DUE TO IMPACTING
- 4 STAMP "AMP 2 AL 13-78" SIZE AND LOCATION APPROX AS SHOWN
5. STUD HOLES SHALL HAVE NO DETACHABLE BURRS THAT WOULD RESULT IN EXPOSED BASE METAL



5/16 OR M8	.328	BODY: COPPER ASTM-B187 ANNEALED TIN PL PER ASTM B-545 .000150 MIN THK INSERT & FUNNEL: BRASS ASTM B36 NICKEL PL SAE AMS QQ-N-290A, DATED JULY 2000, .000100 MIN THK	696838-2
3/8	.390	BODY: COPPER ASTM-B187 ANNEALED TIN PL PER ASTM B-545 .000150 MIN THK INSERT & FUNNEL: BRASS ASTM B36 NICKEL PL SAE AMS QQ-N-290A, DATED JULY 2000, .000100 MIN THK	696838-1
DIM B	DIM A	MATERIAL & FINISH	PART NO

THIS DRAWING IS A CONTROLLED DOCUMENT.		DWN	JR RUTH	13OCT05		TE Connectivity		
DIMENSIONS: INCHES		CHK	MJ SPICER	13OCT05		WIRE TERMINAL, RING TONGUE SEALED COPALUM WIRE SIZE: 2 AL		
TOLERANCES UNLESS OTHERWISE SPECIFIED:		APVD	MJ SPICER	13OCT05		NAME		
0 PLC ± -		PRODUCT SPEC	-			SIZE		
1 PLC ± -		APPLICATION SPEC	-			CAGE CODE		
2 PLC ± -		FINISH	-			DRAWING NO		
3 PLC ± .008		MATERIAL	SEE TABLE			WEIGHT		
4 PLC ± -		FINISH	SEE TABLE			0.000000		
ANGLES ± -		CUSTOMER DRAWING	SCALE			3:1		
			SHEET			1 of 1		
			REV			G		