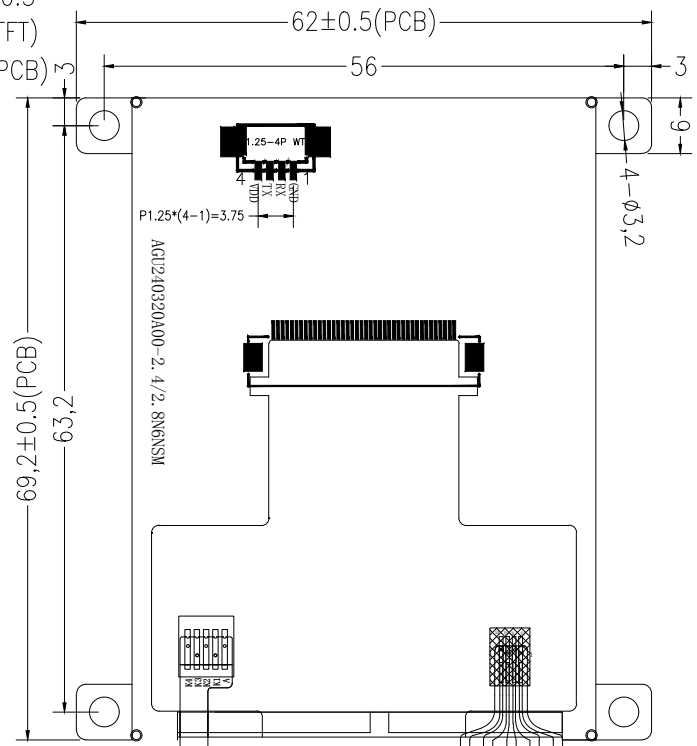
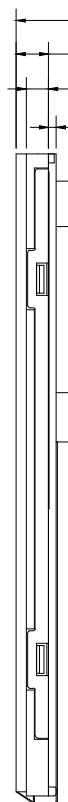
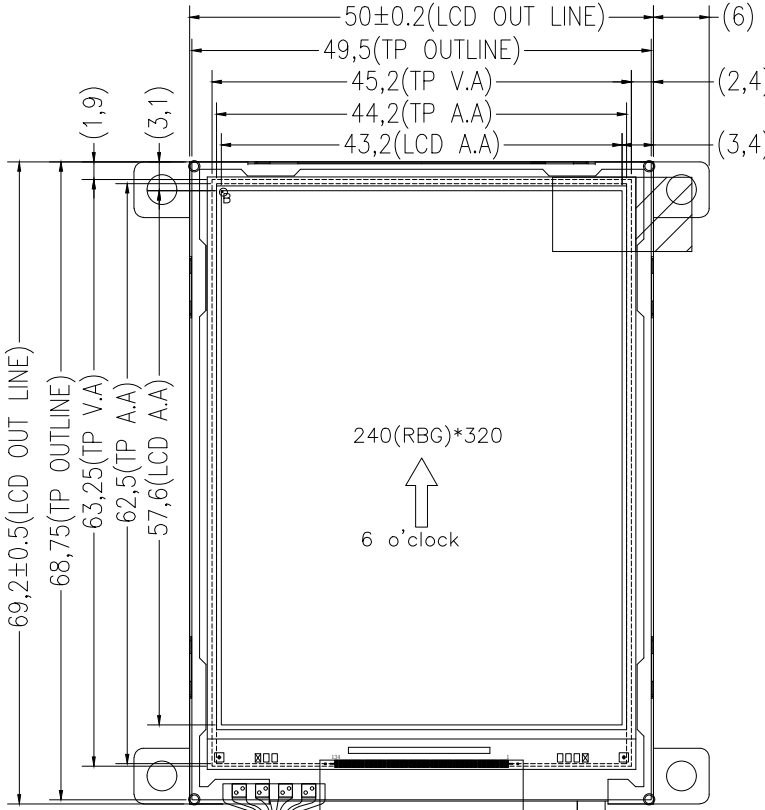


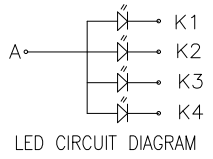
THIS DRAWING IS PROPERTY OF ORIENT DISPLAY . ALL RIGHTS RESERVED.

2		3		4		5		6	
ITEM	PARAMETERS	ITEM	PARAMETERS	ITEM	PARAMETERS	ITEM	PARAMETERS	ITEM	PARAMETERS
DISPLAY TYPE	TN NORMAL WHITE	VIEWING DIRECTION	6 O'CLOCK	LCD OPERATING VOLTAGE	3.3V	IC	IL19341V+32Mb flash		
RESOLUTION (H*V)	2.8" 240*320 PIXELS	OPERATION TEMPERATURE	-20°C TO +70°C	LOGIC VOLTAGE	3.3V	BACKLIGHT	4-CHIP WHITE LED		
POLARIZER TYPE	TRANSMISSIVE	STORAGE TEMPERATURE	-30°C TO +80°C	GREYSCALE SUPPORT	/	CONNECTOR	ZIF		



PIN DEFINE

PIN NO.	SYMBOL
1	GND
2	RX
3	TX
4	VDD



REV.	DESCRIPTION	DATE	TITLE	LCM	PART NO.	AGU240320A00-2.8N6NSM-R
V1	ADD RTP	2022-4-20	REV.	V1	CUSTOMER NO.	AGU240320A00-2.8N6NSM-R
V0	FIRST ISSUE	2021-12-24	SCALE	FIT	UNIT	mm
			ROHS/REACH COMPLIANT	UNMARKED TOLERANCE	YES	±0.3
			CUSTOMER'S APPROVAL			