

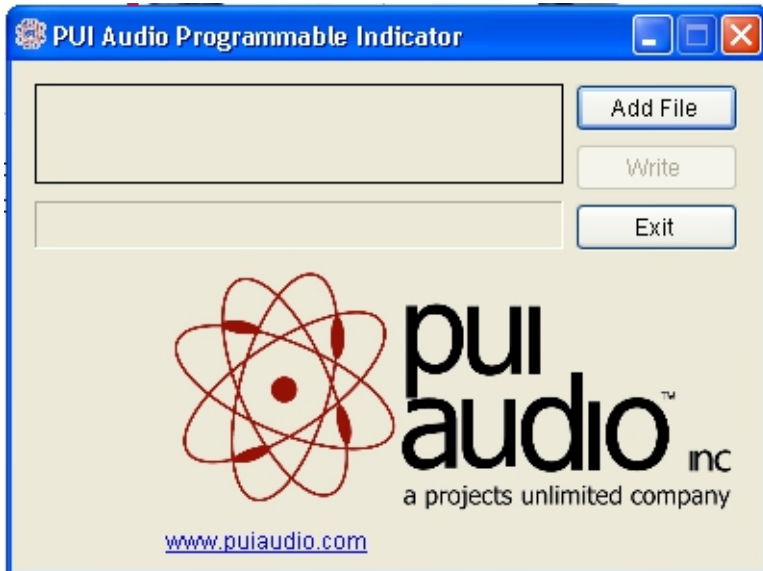
Programmable Indicator Programming Instructions

1. Start by connecting the USB cable to the computer and to the Programmable Indicator as shown below.

Note: The USB to Mini USB cable is sold separately, PUI Part # API-CABLE.



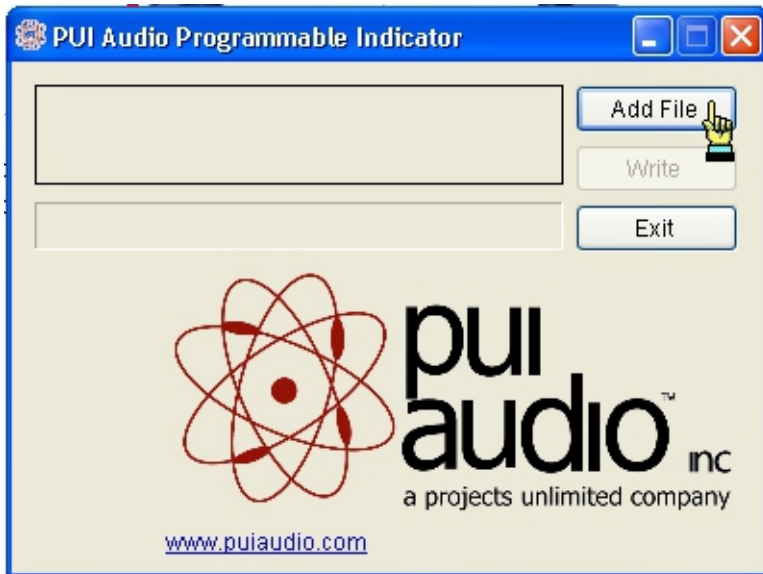
2. Open the program by clicking on “Start, All Programs, PUI Audio, PUI Indicator” and the main programming window will open.



If the program is started without the USB cable or the indicator connected, you will see this error. This is just a warning letting you know that the device is not connected. You can click “OK” to proceed and the program will operate as normal.

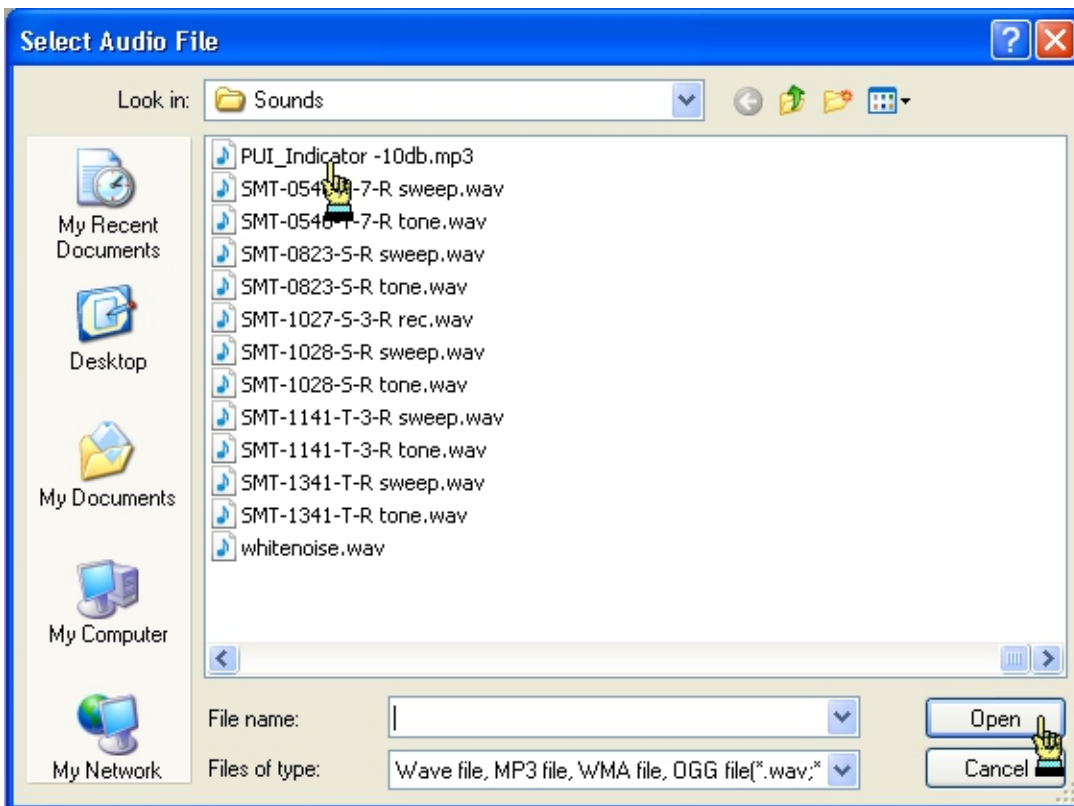


3. Click on “Add File” and point the program to where the .wav or .mp3 files are stored.



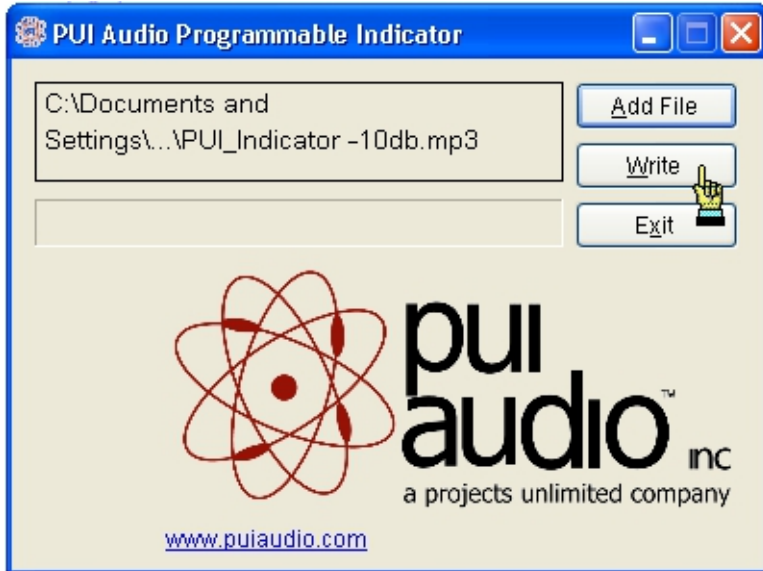
4. Select the file you want to program into the indicator and then click “Open”.

Note: The file length cannot be more than 30 seconds. Continuous single tones of 2KHz or above may distort due to sampling rate. For best results uses files with 11KHz sample rates.

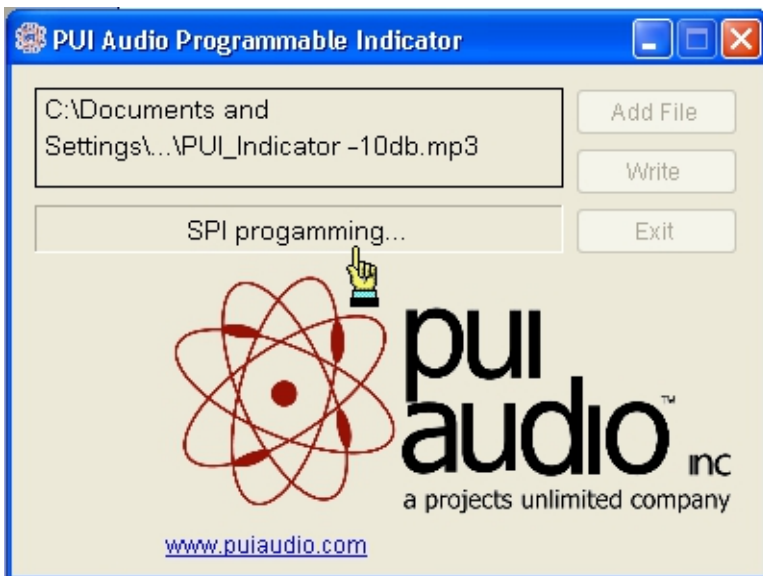


5. Click on “Write” to transfer the file into the indicator.

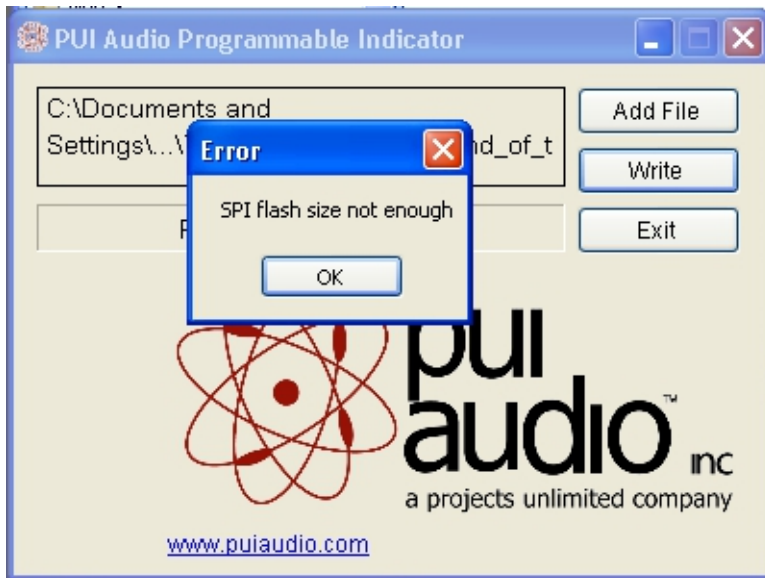
Note: Any existing file previously loaded into the indicator will be erased prior to writing the new file.



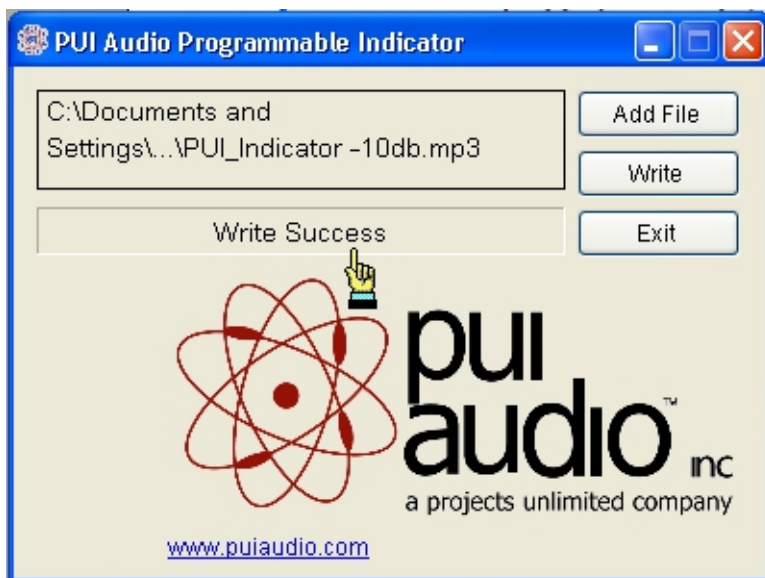
6. The software will erase any previously written file and write the selected file into the indicator. The status window will show “SPI programming”. This only takes a few seconds.



7. If you receive the following error, then your file is too large or longer than the 30-second limit. Reduce the size or length of your file and try again.



8. Once the programming is completed, the status window will say "Write Success".



8. Disconnect the Mini USB cable from the indicator and apply 7 ~ 24VDC to the lead wires to listen to the new file. The indicator will play the new file continuously until the voltage is removed from the device. Please see PUI Specification # API-4260-LW150-R for all the electrical and dimensional data.