

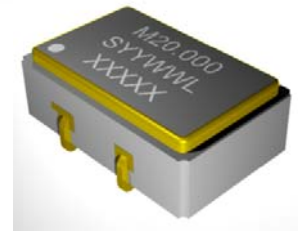
ECN/PCN No.: 3894

For Manufacturer			
Product Description: SMD Oscillator	Abracon Part Number / Part Series: MML-035F-20.000MHz	<input type="checkbox"/> Documentation only <input type="checkbox"/> ECN <input checked="" type="checkbox"/> EOL	<input type="checkbox"/> Series <input checked="" type="checkbox"/> Part Number
Affected Revision: A	New Revision: EOL	Application:	<input type="checkbox"/> Safety <input checked="" type="checkbox"/> Non-Safety
Prior to Change: MML-035F-20.000MHz Rev. A (page 2)			
After Change: EOL			
Cause/Reason for Change: Discontinuation of this older product package type and associated manufacturing capability.			
Change Plan			
Effective Date: 07/15/2021	Additional Remarks:		
Change Declaration:			
Issued Date: 07/15/2021	Issued By: <i>Stephanie Lopez</i>	Issued Department: Engineering	
Approval: <i>Thomas Culhane</i> Engineering Director	Approval: <i>Reuben Quintanilla</i> Quality Director	Approval: <i>Ying Huang</i> Purchasing Director	
For Abracon EOL only			
Last Time Buy (if applicable): None	Alternate Part Number / Part Series: None		
Additional Approval:	Additional Approval:	Additional Approval:	
Customer Approval (If Applicable)			
Qualification Status: <input type="checkbox"/> Approved <input type="checkbox"/> Not accepted <i>Note: It is considered approved if there is no feedback from the customer 1 month after ECN/PCN is released.</i>			
Customer Part Number:		Customer Project:	
Company Name:	Company Representative:	Representative Signature:	
Customer Remarks:			

MML-035F-20.000MHZ CUSTOM OSCILLATOR



- Hermetically Sealed Ceramic SMD Package
- 20.000MHZ
- High Load Oscillator
- ROHS Compliant



Frequency Output	20.000MHZ
Frequency Stability (Inclusive of Temp., Load, Voltage and Aging)	±100PPM
Operating Temp. Range	-40°C to +85°C
Storage Temp. Range	-55°C to +125°C
Waveform	HCMOS
Logic "0"	10% Vdd max
Logic "1"	90% Vdd min
Symmetry	45%/55% max
Load	50 pF max
Rise / Fall Time (20% to 80%)	10 nSec max
Start Time	10 mSec max
Supply Voltage (Vdd)	+5.0 VDC ±10%
Supply Current	10mA max (No Load)
Jitter	10 pSec typ
Internal ASIC	5009

Mechanical & Environmental Detail

Humidity	85% RH, 85°C, 48 Hours
Hermetic Seal	Leak Rate 2×10^{-8} ATM-cm ³ /sec max
Solderability	MIL-STD-202G, Method 208
Reflow Solderability	260°C for 10 seconds
Vibration	MIL-STD-202G, Method 204 35G, 50 to 2000 Hz
Shock	MIL-STD-202G, Method 213 Test Cond E, 1000G's, ½ Sinewave

Marking Detail

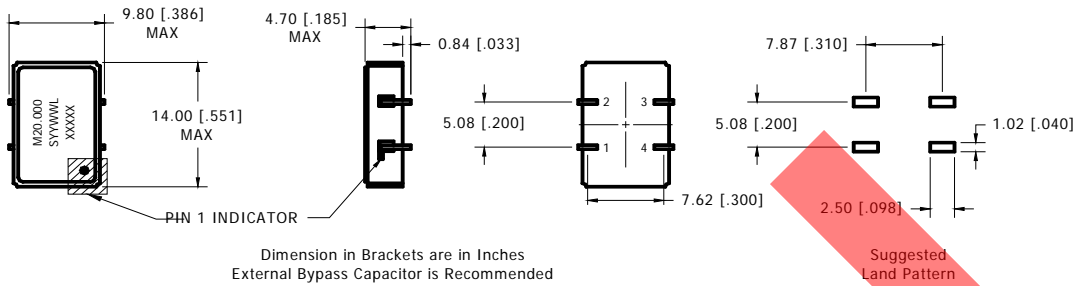
Line 1 = M20.000		
M	=	MMD
20.000	=	Frequency in MHZ
Line 2 = SYWWL		
S	=	Internal Code
YYWW	=	4 Digit Date Code (Year / Week)
L	=	Denotes RoHS Compliant
Line 3 = XXXXX		
Internal use only		
May vary with lots		
Black dot to denote Pin 1		



MMD Monitor/Quartztek
 30400 Esperanza, Rancho Santa Margarita, CA, 92688
 Phone: (949) 709-5075, Fax: (949) 709-3536, www.mmdcomp.com
 Sales@mmdcomp.com

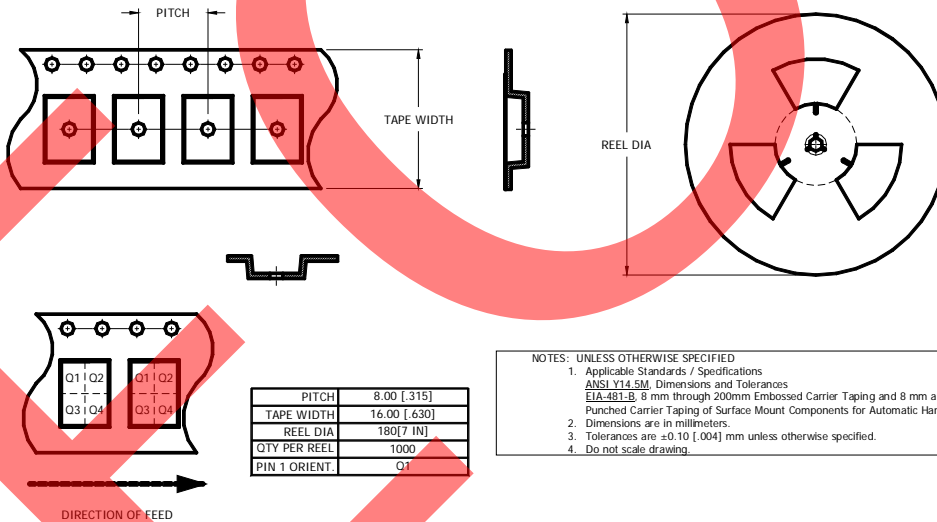


Mechanical Details



PIN CONNECTIONS	
PIN 1	N/C *
PIN 2	GROUND
PIN 3	OUTPUT
PIN 4	SUPPLY VOLTAGE

Tape & Reel Dimensions



MMD Monitor/Quartztek
 30400 Esperanza, Rancho Santa Margarita, CA, 92688
 Phone: (949) 709-5075, Fax: (949) 709-3536, www.mmdcomp.com
 Sales@mmdcomp.com

