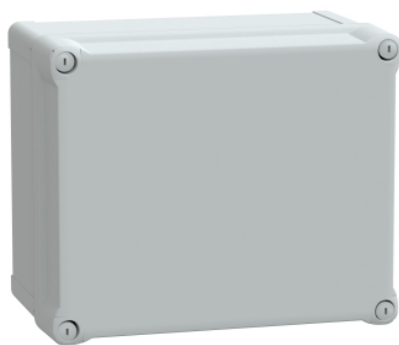


# NSYTBS292416H

ABS box IP66 IK07 RAL7035  
Int.H275W225D160 Ext.H291W241D168  
Opaque cover H60



## Main

Range	Thalassa
Product name	Thalassa TBS
Device Application	Multi-purpose
Category	Industrial box
Height	11.46 in (291 mm)
Width	9.49 in (241 mm)
Depth	6.61 in (168 mm)
Internal height	10.83 in (275 mm)
Internal width	8.86 in (225 mm)
Internal depth	6.30 in (160 mm)
Enclosure mounting	Wall mounted
Device composition	1 body 1 cover 4 cover screw
Body type	One piece moulded
Type of front cover	High plain cover
Cover fixing	Plastic screws
Lock type	Captive screw flat outside sealed area
Removable parts	Cover by captive screws

## Complementary

Material	ABS (acrylonitrile butadiene-styrene)
Color	Gray RAL 7035)
Standards	IEC 62208
Product Certifications	TÜV
Electrical Insulation Class	Class II
IP degree of protection	IP66 conforming to NEMA 4.4X
IK degree of protection	IK07 IEC 62262
Glow wire resistance	1202 °F (650 °C) IEC 60695-2-11
Ambient Air Temperature for Storage	5...104 °F (-15...40 °C)
Operating temperature	-13...140 °F (-25...60 °C)
Net Weight	2.73 lb(US) (1.24 kg)

## Ordering and shipping details

Category	80033-ENCLOSURE SYSTEMS POLYESTER
Discount Schedule	ES1
GTIN	3606480165399
Nbr. of units in pkg.	1
Package weight(Lbs)	2.66 lb(US) (1.207 kg)
Returnability	No
Country of origin	HU

The information provided in this documentation contains general descriptions and/or technical characteristics of the performance of the products contained herein. This documentation is not intended as a substitute for and is not to be used for determining suitability or reliability of these products for specific user applications. It is the duty of any such user or integrator to perform the appropriate and complete risk analysis, evaluation and testing of the products with respect to the relevant specific application or use thereof. Neither Schneider Electric Industries SAS nor any of its affiliates or subsidiaries shall be responsible or liable for misuse of the information contained herein.

## Packing Units

Unit Type of Package 1	PCE
Package 1 Height	7.09 in (18.0 cm)
Package 1 width	9.84 in (25.0 cm)
Package 1 Length	12.01 in (30.5 cm)
Unit Type of Package 2	CAR
Number of Units in Package 2	4
Package 2 Weight	12.55 lb(US) (5.694 kg)
Package 2 Height	15.75 in (40.0 cm)
Package 2 width	15.94 in (40.5 cm)
Package 2 Length	23.62 in (60.0 cm)
Unit Type of Package 3	P12
Number of Units in Package 3	48
Package 3 Weight	169.76 lb(US) (77.0 kg)
Package 3 Height	53.54 in (136.0 cm)
Package 3 width	31.50 in (80.0 cm)
Package 3 Length	47.24 in (120.0 cm)

## Offer Sustainability

Sustainable offer status	Green Premium product
REACH Regulation	<a href="#">REACH Declaration</a>
REACH free of SVHC	Yes
EU RoHS Directive	Pro-active compliance (Product out of EU RoHS legal scope) <a href="#">EU RoHS Declaration</a>
Toxic heavy metal free	Yes
Mercury free	Yes
RoHS exemption information	<a href="#">Yes</a>
China RoHS Regulation	<a href="#">China RoHS Declaration</a>
Environmental Disclosure	<a href="#">Product Environmental Profile</a>

## Contractual warranty

Warranty	18 months
----------	-----------