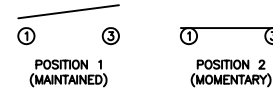


**SCHEMATIC**



**SPECIFICATIONS**

**FUNCTION:**  
1P1T OFF-(ON)

**RATINGS:**  
ANSI/UL 1054 and CAN/CSA C22.2 No.55 (E194579):  
16A 125VAC [UR, cUR]  
1/2HP 125VAC [UR, cUR]  
3/4HP 250VAC [UR, cUR]

EN 61058-1:2002:  
16(6)A 250V~ 1E4 T125/55 [ENEC14]  
10(4)A 250V~ 5E4 T125/55 [ENEC14]

**CONTACT RESISTANCE:**  
Initial: 35mΩ Max. at 50VAC

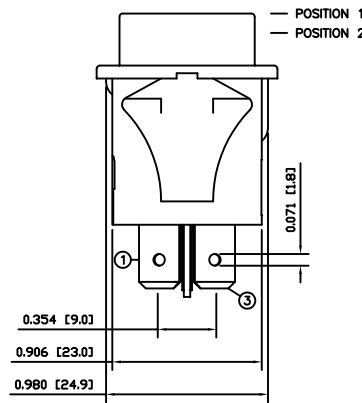
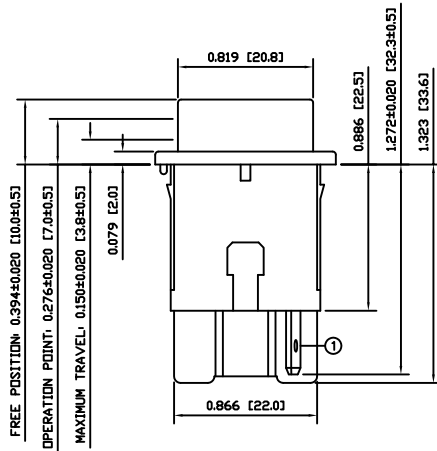
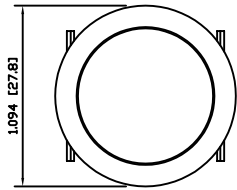
**INSULATION RESISTANCE:**  
100MΩ Min. at 500VDC

**DIELECTRIC STRENGTH:**  
1,500VAC For 1 Minute

**ELECTRICAL LIFE:**  
6,000 Cycles [UR, cUR]  
10,000 Cycles [ENEC14]  
50,000 Cycles [ENEC14]

**TEMPERATURE:**  
Operating: -20°C to 105°C [UR, cUR]  
Operating: -20°C to 125°C [ENEC14]

**APPROVALS:**



**COLORS AND MARKINGS**

**BODY:**  
Black

**ACTUATOR:**  
Green  
Glossy Finish

**MARKINGS:**  
None

**MARKING COLOR:**  
None

**MATERIALS**

**BODY:**  
Polyamide 6/6 (PA66), UL94 V-2

**ACTUATOR:**  
Polyamide 6/6 (PA66), UL94 V-2

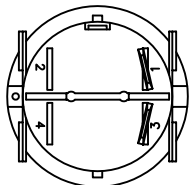
**CONTACT CARRIER:**  
Polyamide 6/6 (PA66), UL94 V-2

**SPRINGS:**  
Steel

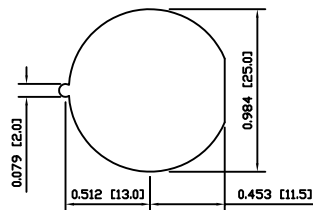
**MOBILE CONTACT:**  
Silver Plated Copper

**CONTACTS:**  
Silver Plated Copper

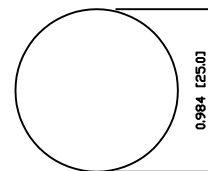
**TERMINALS:**  
Silver Plated Copper



**SUGGESTED PANEL CUTOUT**



**ALTERNATE PANEL CUTOUT**



BODY	A	09/08/07	CAB
COLORS	A	09/08/07	CAB
MATERIALS	A	09/08/07	CAB
SPECIFICATIONS	B	10/05/25	CAB
REFERENCE	REV.	DATE	BY

THE INFORMATION CONTAINED IN THIS DOCUMENT IS PROPRIETARY TO E-SWITCH AND IS NOT TO BE COPIED OR TRANSFERRED

B	REMOVED SEMKO RATING	23315	04/16/18	MJR
A	INITIAL RELEASE	20498	02/22/12	BMA
REV.	DESCRIPTION	PCR	DATE	DRAWN BY

DIMENSIONS	
INCHES [MILLIMETERS]	
GENERAL TOLERANCES	
±0.008 [±0.2] / ±1'	
SCALE	PROJECTION
DRAWING NOT TO SCALE	1:1

PR144C1800			
DRAWING NUMBER	DATE	REVISION	
38-PR144C1800	FEBRUARY 22, 2012	B	