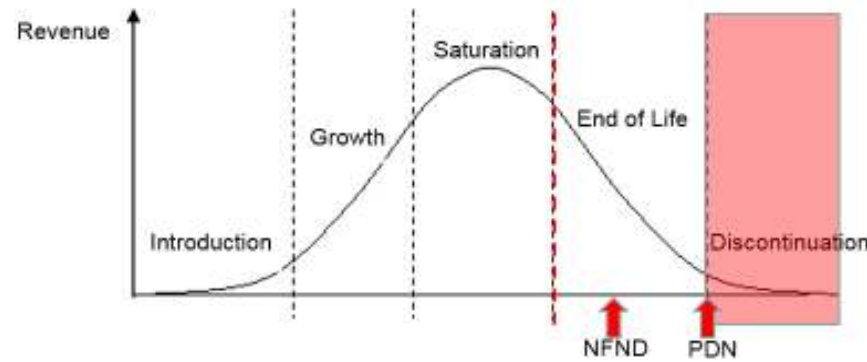


Light is OSRAM

Product Discontinuation (acc. JEDEC J-STD-048)
OS-PD-2018-080

01-Nov-2018

| | |
|-----------------------|-----------------|
| Last order: | 01-May-2019 |
| Last delivery: | 01-Nov-2019 |
| Reason: | Change of yield |



Please direct your feedback to your local Sales office.

| DISCONTINUED | | | | NEW (REPLACEMENT) | | | |
|---------------------------------------|---------------|----------|--------|---|-------------------------|----------|--------|
| Device | Ordering Code | Function | Brand | Device | Datasheet Ordering Code | Function | Brand |
| SFH 4775S bins: EB1, EB2, FA1, FA2 | Q65112A4691 | Emitter | SYNIOS | SFH 4775S bins: EB2, FA1, FA2, FB1 bin EB1 is removed bin FB1 is added | Q65112A7448 | Emitter | SYNIOS |
| | | | | | | | |

Products Affected by Product Discontinuation Notification

Number: OS-PD-2018-080

Name: Product Discontinuation due to Change of Yield

Release Date: 11/1/2018

Last Order: 5/1/2019

Last Delivery: 11/1/2019

DISCONTINUED

NEW (REPLACEMENT)

| <i>Product</i> | <i>QNumber</i> | <i>QNumber Description</i> | <i>Part Number</i> | <i>Product</i> | <i>QNumber</i> | <i>QNumber Description</i> | <i>Part Number</i> |
|----------------|----------------|-----------------------------------|--------------------|----------------|----------------|---|--------------------|
| SFH 4775S | Q65112A4691 | SFH 4775Sbins: EB1, EB2, FA1, FA2 | | SFH 4775S | Q65112A7448 | SFH 4775Sbins: EB2, FA1, FA2, FB1bin EB | |