

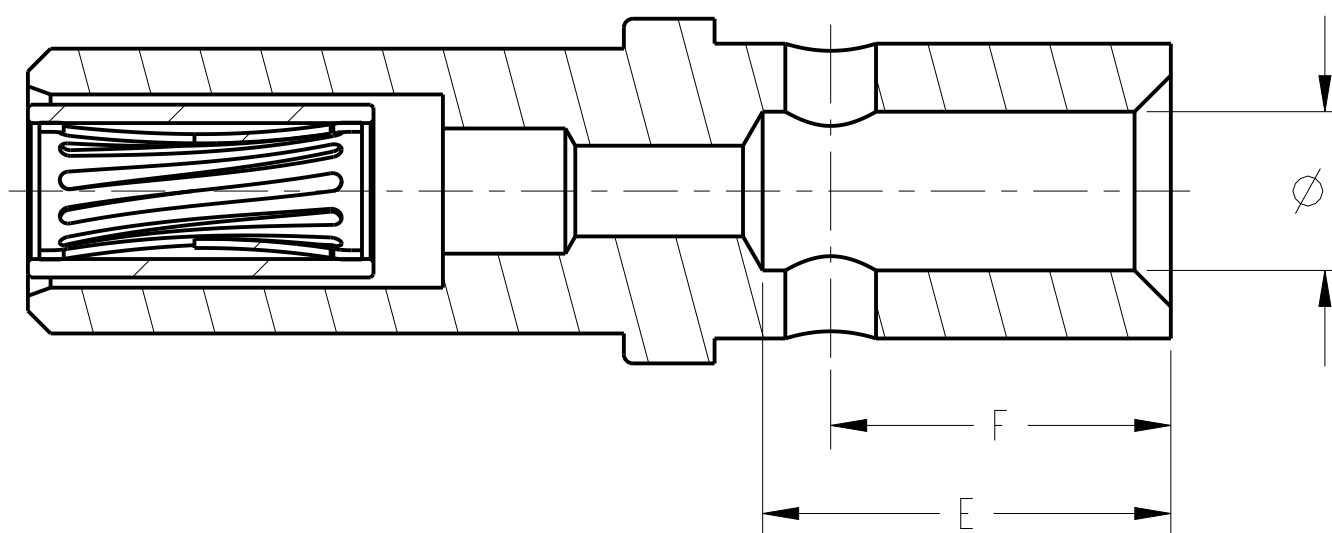
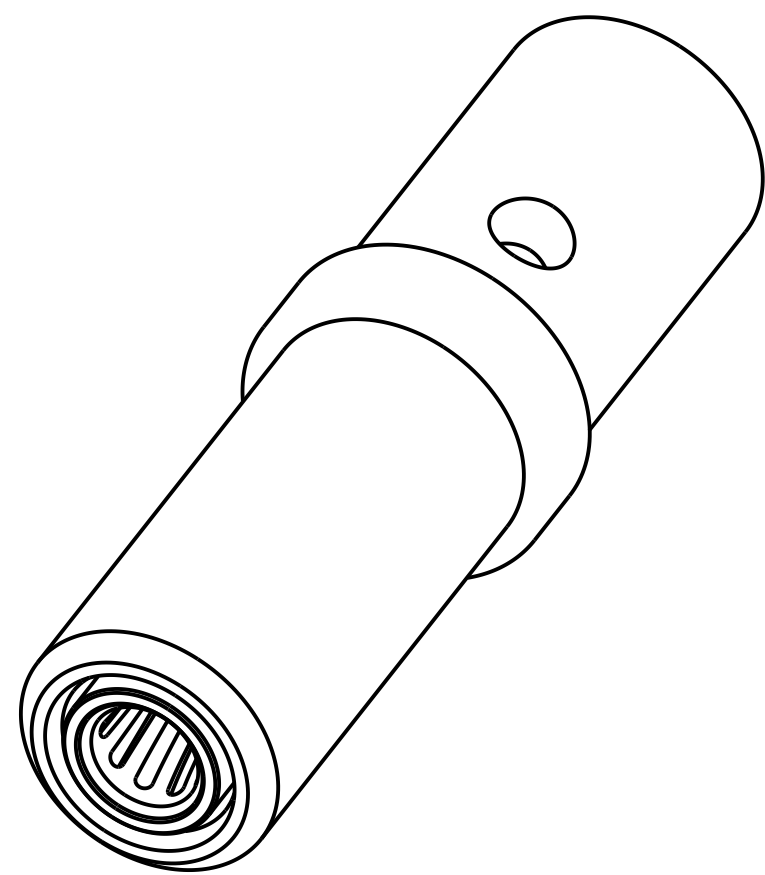
GENERAL TOLERANCE

DIM. RANGE	0.5 ~ 3	> 3 ~ 6	> 6 ~ 30	> 30 ~ 120	> 120 ~ 400
TOLERANCE	±0.1	±0.1	±0.2	±0.3	±0.5

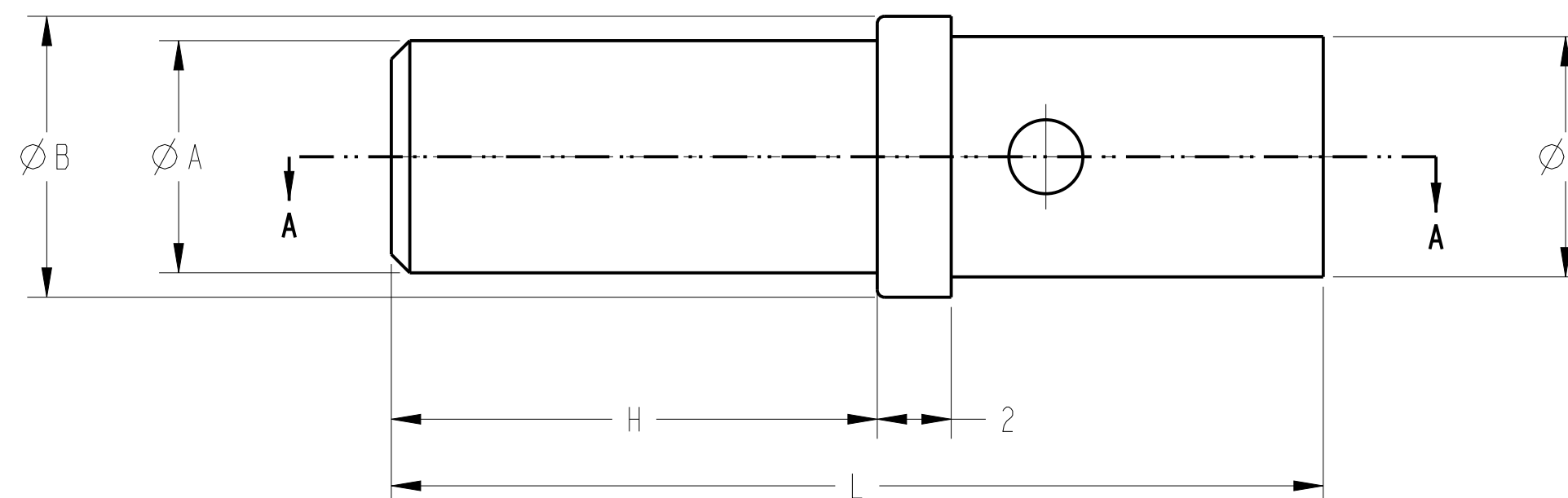
CUSTOMER DRAWING

REVISIONS		
REV	DESCRIPTION	DATE
A	PRELIMINARY VERSION	2015-12-22
B	UPDATE DESCRIPTION OF RADSOK SIZE FOR C10-737420-001	2016-04-18

PART NUMBER	∅A	∅B	∅C	∅D	E	F	H	L	RATED CURRENT	RADSOK SIZE (NON SUPER TWIST)	RECOMMENDED WIRE AWG
C10-737419-001	∅6	∅7.5	∅3.0	∅6.0	9	7.5	8.89	20.8	35A	2.4MM	12
C10-737420-001	∅7.8	∅9.3	∅4.8	∅7.8	13	11.5	12.62	29.1	60A	ST 3.0MM (B)	8
C10-737421-001	∅7.8	∅9.3	∅4.8	∅7.8	13	11.5	12.62	29.1	70A	3.6MM	8
C10-737422-001	∅10.0	∅11.5	∅6.8	∅10	15	13.5	15.83	34.8	120A	5.7MM	4
C10-737423-001	∅10.0	∅11.5	∅6.8	∅10	15	13.5	21.92	40.9	120A	6.0MM	4
C10-737424-001	∅13.5	∅15	∅10.0	∅13.5	19	17.5	23.05	47.1	200A	8.0MM	1/0



SECTION A-A



1. THE REFERENCED PRODUCT IS IN COMPLIANCE WITH THE MAXIMUM CONCENTRATION VALUES(MCVS) SET FORTH IN THE 2009/125/EC AMENDMENT TO 2011/65/EU RoHS DIRECTIVE.

NOTES:

THIS DOCUMENT CONTAINS PROPRIETARY INFORMATION AND SUCH INFORMATION MAY NOT BE DISCLOSED TO OTHERS FOR ANY PURPOSE OR USED FOR MANUFACTURING PURPOSES WITHOUT WRITTEN PERMISSION FROM THE AMPHENOL CORP.

N/A
NEXT ASSEMBLY
METRIC DOCUMENT

PRO/ENGINEER INFORMATION
 Pro/e Model Used:
 10-7374XX.PART
 Drawing Name:
 10-7374XX

UNLESS OTHERWISE SPECIFIED	SPECIFICATIONS	POS	QTY	PART NUMBER	DESCRIPTION	NOTE
LINEAR DIMENSIONS ARE IN: MILLIMETERS TOLERANCES: ANGLES= ±2° DEFAULT LINEAR TOLERANCES SEE TABLE DIM. & TOL. PER ASME Y14.5M-1994; DRG PER MIL-DTL-31000; OTHER AMPHENOL STANDARDS: 9-9318 LEGENDS: △=FLAG NOTE CALL OUT REFERENCE ONLY	MATERIAL SPEC. COPPER	APPROVALS		DATE	PARTS LIST	
	PROCESS SPEC. SILVER 150U" MIN OVER NICKEL	EVANS JIANG	ROB WENG	APR-18-16	AMPHENOL INDUSTRIAL OPERATIONS Amphenol Technology(Zhuhai)Co.,Ltd No.63, Xingnan Road, Sanzao Town, Jinwan, Zhuhai, PRC	
		DERIC LI	C&I		RADSOK CRIMP RECEPTACLE	
		THIRD ANGLE PROJECTION			SIZE	REV.
					C	B
					CAGE CODE	DOCUMENT NO.
					77820	C10-7374()-001
					SCALE: 6.0	SHEET 1 OF 1

C10-7374()-001
 SHEET 1 OF 1
 REV. B
 C
 B
 A

C10-7374()-001
 SHEET 1 OF 1
 REV. B
 B
 A