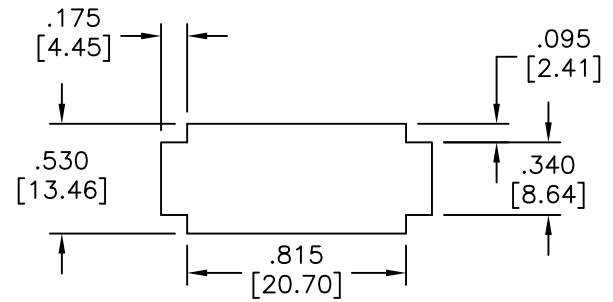
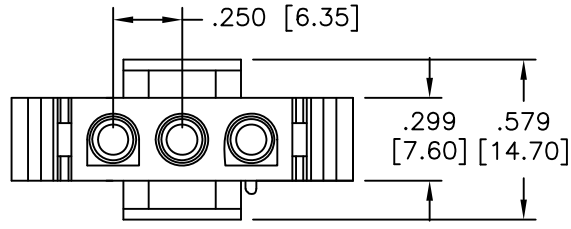
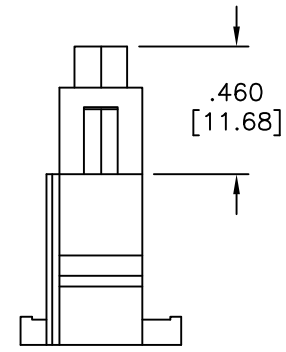
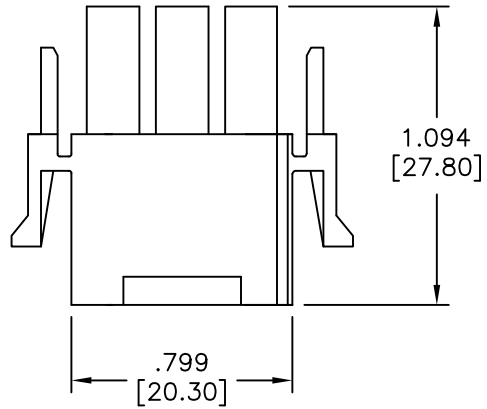


APPROVED: _____
 DATE: _____ TITLE: _____

Rev	AWO #	Description	Date	Appr
-		RELEASED	11/19/10	
A		REDRAWN	08/30/12	
B		UPDATE SPEC.	6/10/19	LH/KC



Panel hole dimensions



SPECIFICATIONS:

Material:
 Insulator: Nylon66. rated UL94V-2
 Insulator color: Natural

Electrical:

Current rating: 13A Δ
 Voltage rating: 600V
 Insulation resistance: 1000 Mohms min
 Dielectric withstanding voltage: 5000 VAC for 1 minut
 Temperature range: -55°C to +105°C

Environmental:

Lead free, RoHS compliant.



UNLESS OTHERWISE SPECIFIED ALL DIMENSIONS ARE INCHES [MM] TOLERANCES: EXCEPT AS NOTED	
INCHES	HOLES
.X ± .10	Ø.X ± .10
.XX ± .020	Ø.XX ± .015
.XXX ± .015	Ø.XXX ± .010
APPROVALS	
DRAWN	DATE
DY	11/19/10
CHECKED	
APPROVED	

ADAM TECH INTERCONNECTS
 909 Rahway Avenue,
 Union, NJ 07083
 Phone: 908-687-5000
 Fax: 908-687-5710

TITLE 6.35MM PITCH CONNECTOR, SINGLE ROW HOUSING, MALE, 3 POSITION		
SIZE X	PART NO. DME-M-03	REV. B
REF: S00123T	SCALE: NTS	SHEET 1 OF 1