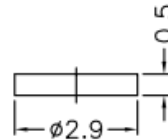
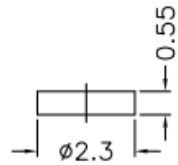
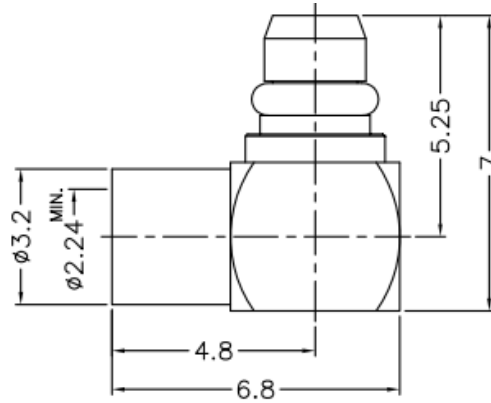


RECOMMENDED
CABLE STRIPPING DIM'S




1. Electrical

	Value
1.1 Impedance	50 Ohm
1.2 Frequency	DC to 6GHz
1.3 VSWR	1.25 Max
1.4 Insertion Loss	0.06dB x Sq.Rt(FGHz)
1.5 Voltage Rating	170Vrms(Max.)
1.6 Insulation Resiatnce	>1,000MOhm
1.7 Center Contact Resistance	<6mOhms
1.8 Outer Contact Resistance	<2.5mOhms

2. Environmental

2.1 Temperature Range	-55°C to +165°C
2.2 RoHS Status	Compliant
2.3 Durability	>500 Cycles

ITEM	DESCRIPTION	MATERIALS	FINISH
5	Clip Ring	BeCu	Gold
4	Rear Cap	Brass	Gold
3	Contact	Brass	Gold
2	Insulatos	PTFE	White
1	Front Body	Brass	Gold

REV.	DESCRIPTION	ECN	DRAWN	DATE	Customer DWG	Title: MMCX R/A Male for ø0.085" Direct Solder			
1	Pre-Release		JH	02/25/19	Remarks: Metric DIM.	Originated: 02/25/19	Contact: Sales@ConductRF.com Tel: +1 978 374 6840	Range: MMCX Sheet 1 of 1	
							Dwg Ref: MMM21C-A28		
					Dimensions are nominal & are reference only, unless specifically called out.	Checked: JW	Approved: PL	Rev: 1	
REVISION HISTORY						Part No: MMM21C-A28G01			