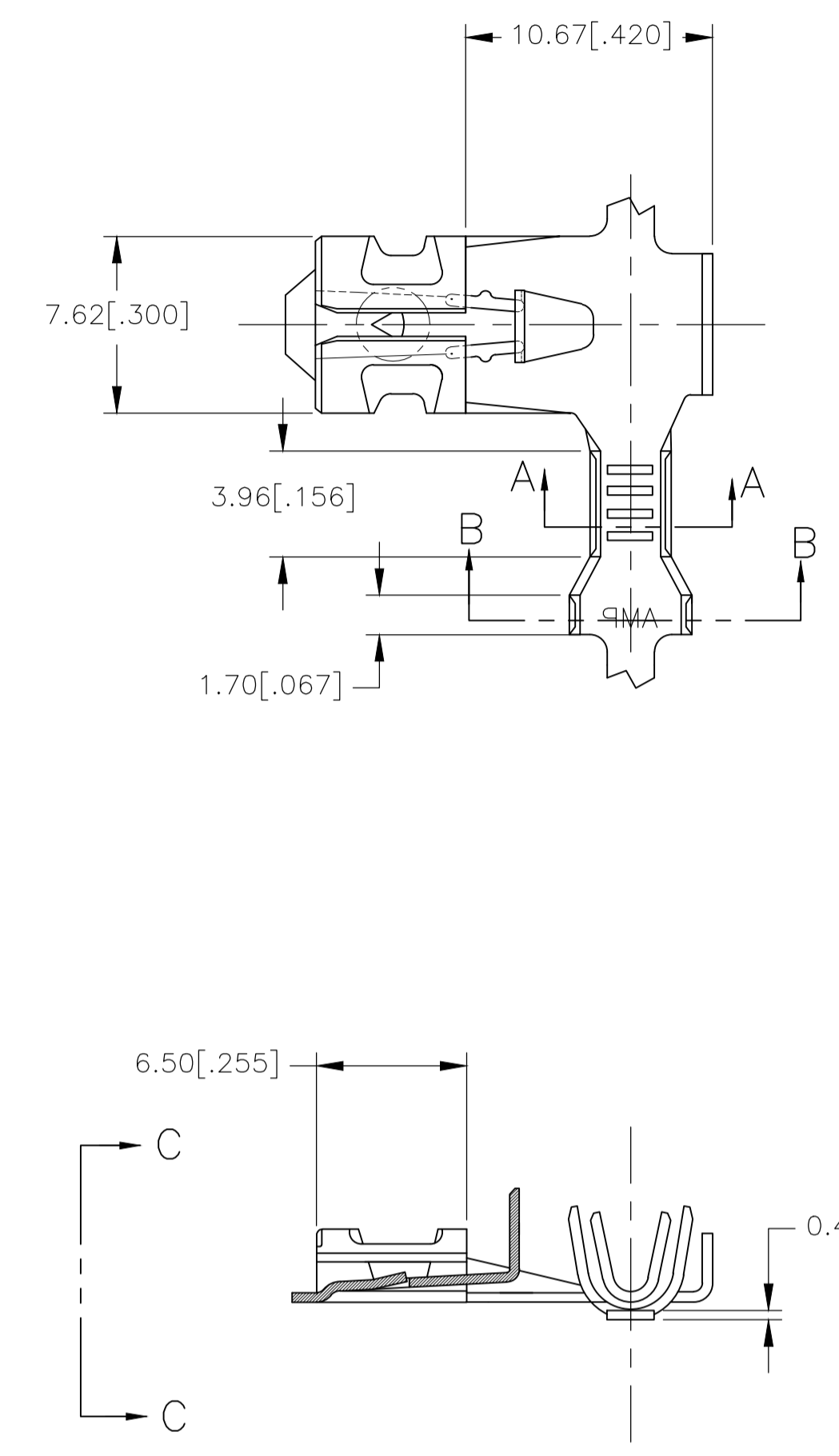
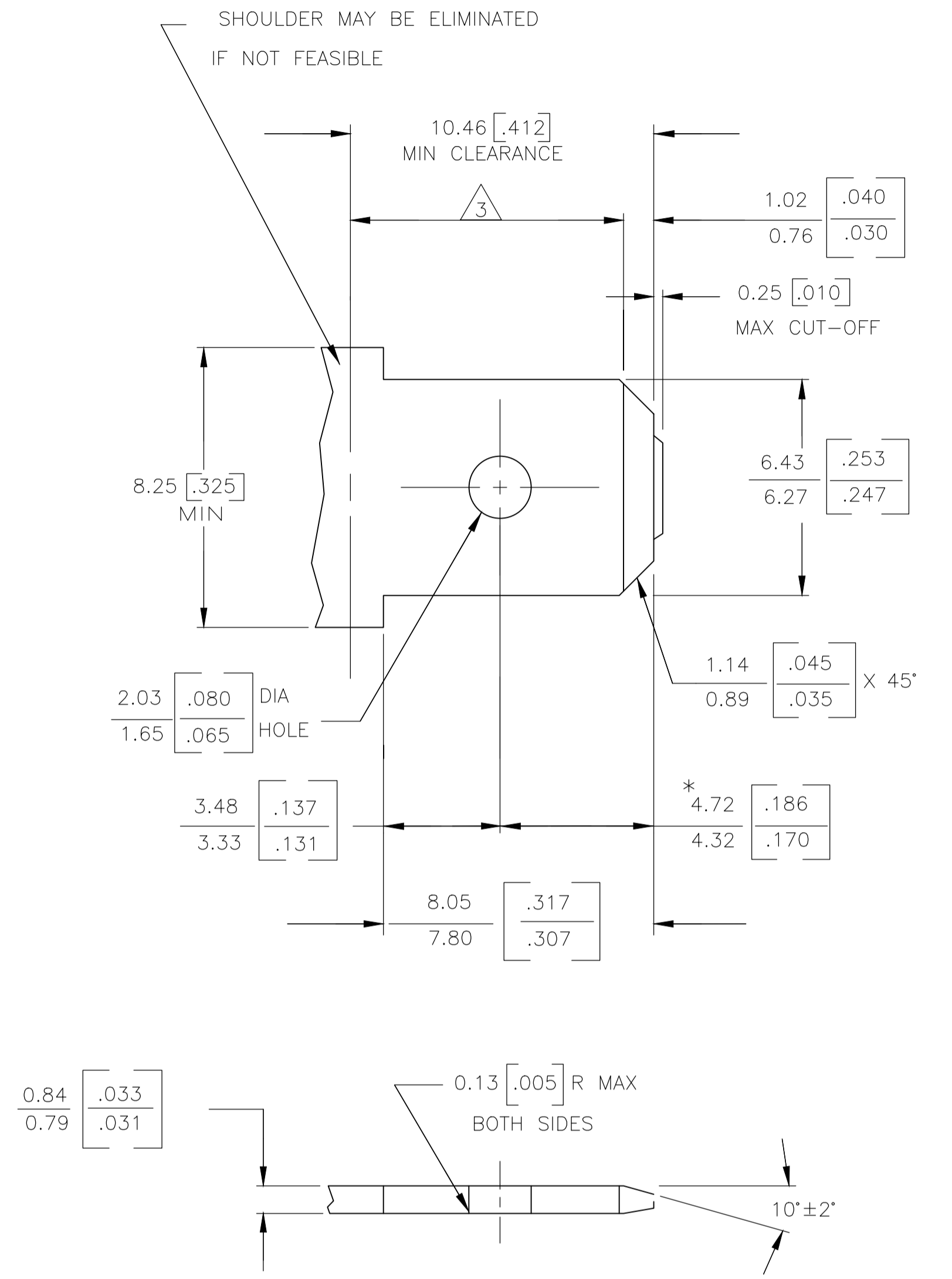
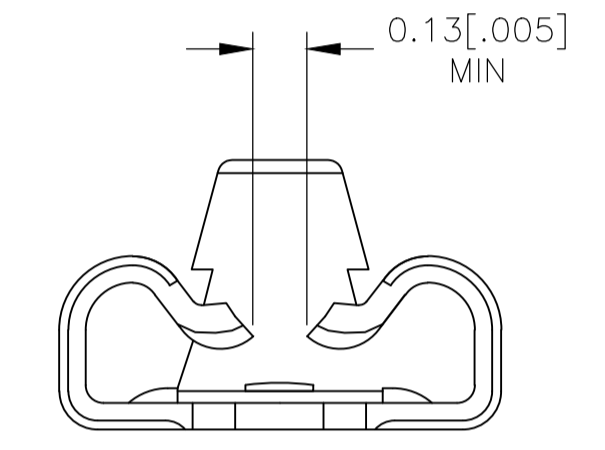


REVISIONS				
P	LTR	DESCRIPTION	DATE	APVD
A2		UPDATED PER ECR-18-014679	10OCT2018	K.Y. D.T.

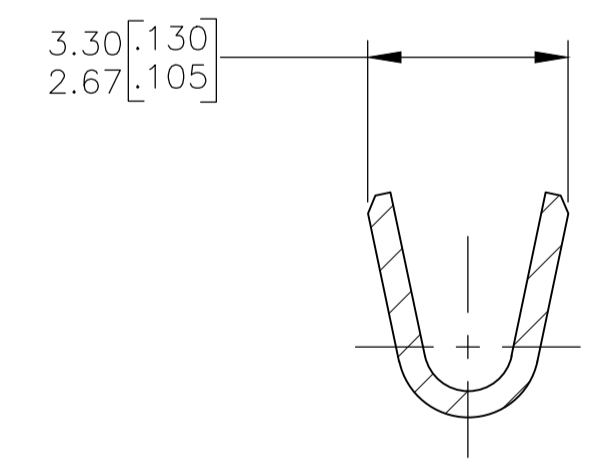
SUGGESTED MATING TAB



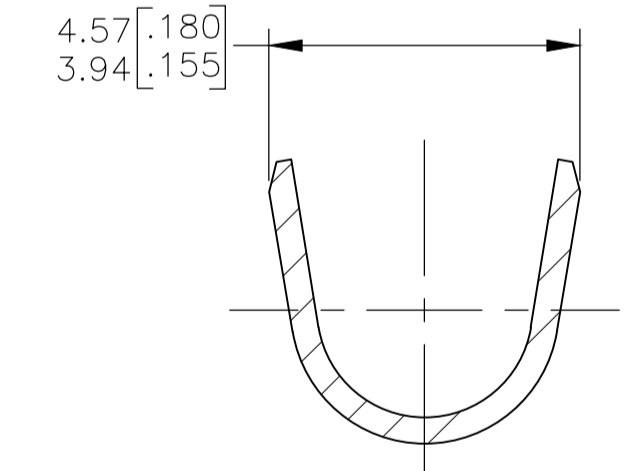
- 1 DIMENSIONS IN BRACKETS ARE IN INCHES.
- 2 PRODUCT PROVIDED IN STRIP FORM, BREAKS MAY BE PRESENT.
- 3 THIS PART HAS NOT COMPLETED QUALIFICATION TESTING



VIEW C-C
SCALE 8:1



SECTION A-A
SCALE 8:1



SECTION B-B
SCALE 8:1

- 1 MATL: ½ H BRASS OR NICKEL PL STEEL.
 - 2 NO BURRS PERMISSIBLE AT HOLE.
 - 3 MUST BE FLAT WITHIN 0.076 [.003] OVER THIS LENGTH.
 - 4 TIN PLATING IS REQUIRED ON BRASS WHEN TERMINAL TEMP. IS OVER 225°F
 - 5 HOLE MUST BE SYMMETRICAL ABOUT TAB C_L WITHIN 0.076 [.003]
- * TO BE USED ONLY WHEN SHOULDER IS ELIMINATED.

1.52-2.54 [.060-.100] DIA	#22-#18 AWG	2238141-1
INSULATION RANGE	WIRE SIZE	PART NUMBER

THIS DRAWING IS A CONTROLLED DOCUMENT.		DWN: BASVESH WARAD CHK: MIKE DIDONATO APD: MIKE DIDONATO	07MAR2017 07MAR2017 07MAR2017	TE Connectivity	
DIMENSIONS: mm(INCHES)		TOLERANCES UNLESS OTHERWISE SPECIFIED:		RECEPTACLE, FLAG, POSITIVE-LOCK, .250 SERIES	
0 PLC	± .005	PRODUCT SPEC		SIZE: A100779	
1 PLC	± .005	APPLICATION SPEC		CAGE CODE: 2238141	
2 PLC	± .005	MATERIAL		RESTRICTED TO: -	
3 PLC	± 0.25(.010)	FINISH		SCALE: 4:1	
4 PLC	± .005	WEIGHT: 0		SHEET 1 OF 1	
ANGLES	± .005	CUSTOMER DRAWING		REV A2	