

**PLEASE CHECK WWW.MOLEX.COM FOR LATEST PART INFORMATION**

**Part Number:** [0765001128](#)  
**Status:** **Active**  
**Overview:** [Impact Backplane Connector and Cable Assembly System](#)  
**Description:** Impact 100 Ohm 4 Pair RAM Right-Angle Header, Unguided, Dual Endwall, 10 Columns, 120 Circuits, Pin Length 5.50mm, Plated Through Hole Dimension 0.39mm, Lead-Free

**Documents:**

<a href="#">3D Model</a>	<a href="#">Application Specification AS-76060-994-001 (PDF)</a>
<a href="#">Drawing (PDF)</a>	<a href="#">Application Specification AS-76060-9999-001 (PDF)</a>
<a href="#">3D Model (PDF)</a>	<a href="#">Packaging Specification PK-70873-041-001 (PDF)</a>
<a href="#">Product Specification PS-76060-999-001 (PDF)</a>	<a href="#">Symbol Footprint Data SYM-76500-1128-001 (PDF)</a>
<a href="#">Application Specification AS-76060-990-001 (PDF)</a>	<a href="#">RoHS Certificate of Compliance (PDF)</a>

**Agency Certification**

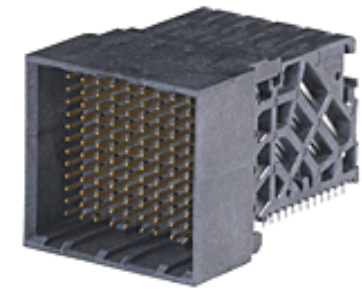
UL E29179

**General**

Product Family	Backplane Connectors
Series	<a href="#">76500</a>
Application	Coplanar
Application Tooling Documents	TM-622018799-001
Component Type	PCB Header
Electrical Model	Yes
Overview	<a href="#">Impact Backplane Connector and Cable Assembly System</a>
Product Name	Impact
UPC	884982381278

**Physical**

Circuits (Loaded)	120
Circuits (maximum)	120
Color - Resin	Black
Durability (mating cycles max)	200
First Mate / Last Break	No
Flammability	94V-0
Guide to Mating Part	No
Keying to Mating Part	None
Material - Metal	High Performance Alloy (HPA)
Material - Plating Mating	Gold
Material - Plating Termination	Tin
Material - Resin	High Temperature Thermoplastic
Net Weight	12.420/g
Number of Columns	10
Number of Pairs	4
Number of Rows	12
Orientation	Right Angle
PC Tail Length	1.20mm
PCB Locator	No
PCB Retention	Yes
PCB Thickness - Recommended	1.00mm
Packaging Type	Tray
Pitch - Mating Interface	1.90mm
Pitch - Termination Interface	1.90mm
Plating min - Mating	0.762µm
Polarized to PCB	No
Stackable	No



*Series image - Reference only*

**EU ELV**

**Not Relevant**

**EU RoHS**

**Compliant**

**REACH SVHC**

Not Contained Per -  
D(2021)4569-DC (8  
July 2021)

**Halogen-Free**

**Status**

**Low-Halogen**

For more information, please visit [Contact US](#)

China ROHS

ELV

RoHS Phthalates

**China RoHS**

Green Image

Not Relevant

Not Contained

**Search Parts in this Series**

[76500](#) Series

**Mates With**

[76160](#) Impact 100 Ohm Daughtercard

Temperature Range - Operating -55° to +85°C  
Termination Interface: Style Through Hole - Compliant Pin

**Electrical**

Current - Maximum per Contact 0.75A  
Data Rate 25.0 Gbps  
Impedance 100Ω  
Shield Type N/A  
Shielded No  
Voltage - Maximum 30V AC (RMS)/DC

**Material Info**

**Reference - Drawing Numbers**

Application Specification AS-76060-990-001, AS-76060-994-001,  
AS-76060-9999-001  
Electrical Model Document EE-76500-002-002  
Packaging Specification PK-70873-041-001  
Product Specification PS-76060-999-001  
S-Parameter Model SP-76500-002-002  
Sales Drawing SD-76500-001-001  
Symbol/Footprint Data SYM-76500-1128-001

This document was generated on 10/04/2021

**PLEASE CHECK [WWW.MOLEX.COM](http://WWW.MOLEX.COM) FOR LATEST PART INFORMATION**