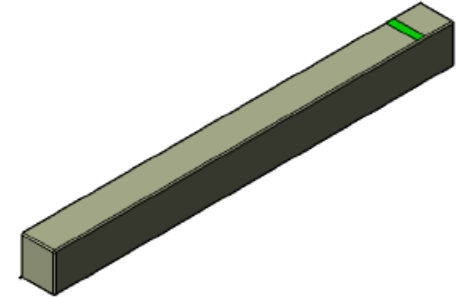
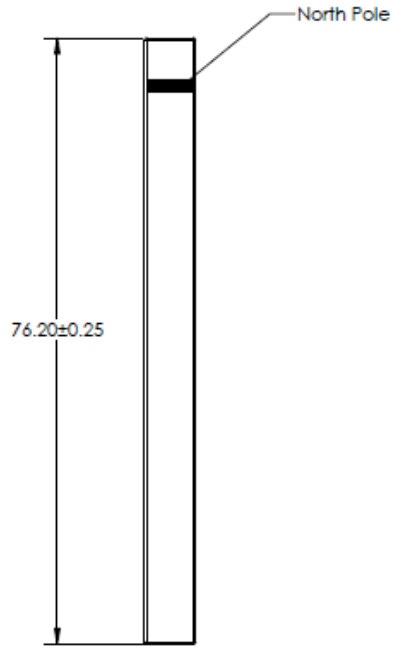


CONFIDENTIAL & PROPRIETARY INFORMATION

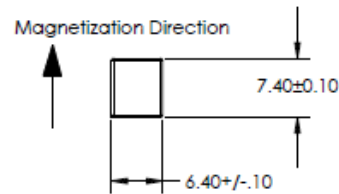
This document contains Confidential and Proprietary Information of Alliance LLC, and all design, manufacturing, reproduction, use, and sale rights of such information are expressly reserved

ALL DIMENSIONS ARE IN MM



MAGNET PROPERTIES PER N-42H:

- Br: 13,000-13,500 G
- Hc: 11,300-12,600 Oe
- Hci: ≥17,000 Oe
- BH_(max): 41-43 MGOe
- Operating T max: 120° C
- Magnetic loss: -0.11%Br/°C



Rev	Date	By

TOLERANCES
(UNLESS OTHERWISE NOTED)

DECIMAL	METRIC
X.XX = ± .01	X.X = ± .25
X.XXX = ± .005	X.XX = ± .13

ANGLES
± .5°

DO NOT SCALE DRAWING

Alliance LLC		
1450 CLARK DRIVE, VALPARAISO, INDIANA 46385		
DESCRIPTION: RARE EARTH BAR MAGNET		
P/N: YB-038-1		BAR MAGNET
MATERIAL: NdFeB	Dwg by: BT	REV LEVEL: A
COATING: EPOXY	Apr by: DV	Apr. Dated: 02-18-2020