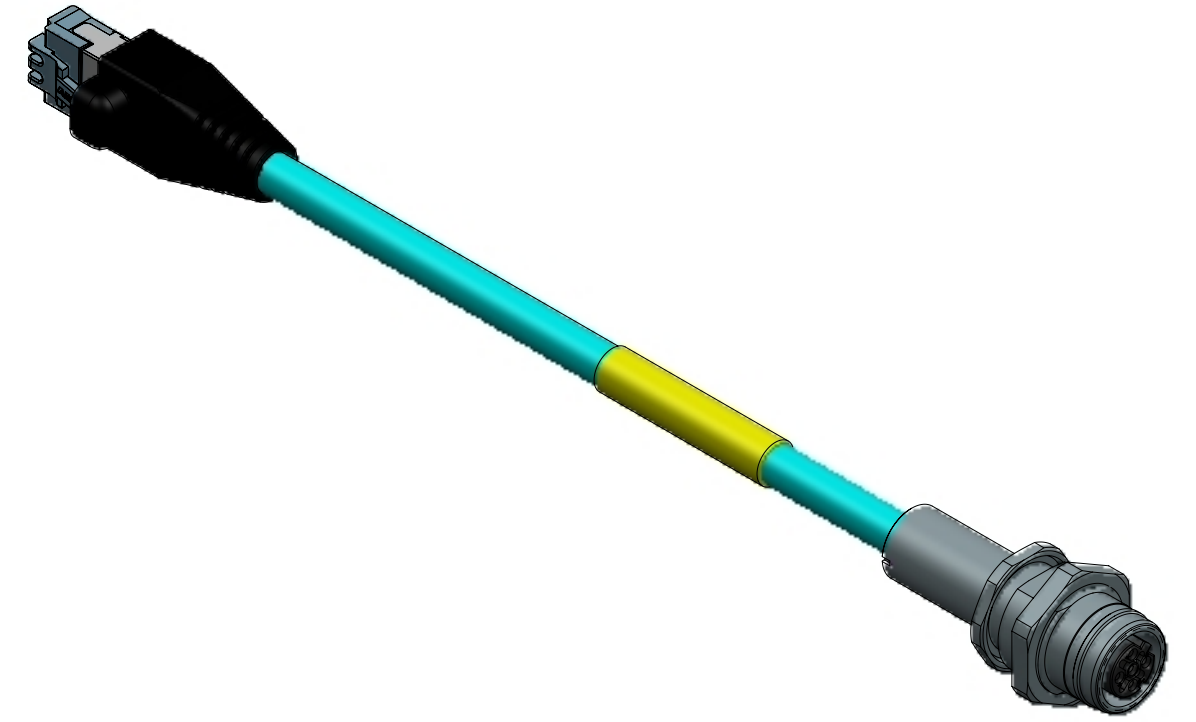


MATERIAL NO.	ENGINEERING NO.	FINISHED LENGTH
1201080673	ERWPAU7004M003	11.81 IN (0.3M)
1201080674	ERWPAU7004M006	23.62 IN (0.6M)
1201080675	ERWPAU7004M010	3 FT 3 IN (1.0M)
1201080676	ERWPAU7004M020	6 FT 7 IN (2.0M)
1201080677	ERWPAU7004M050	16 FT 5IN (5.0M)

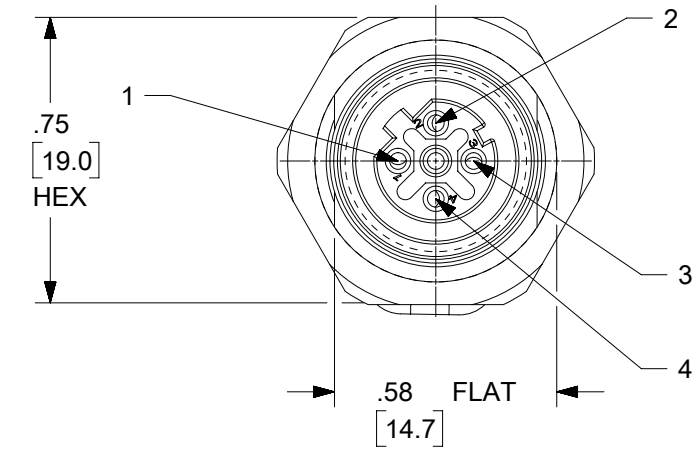
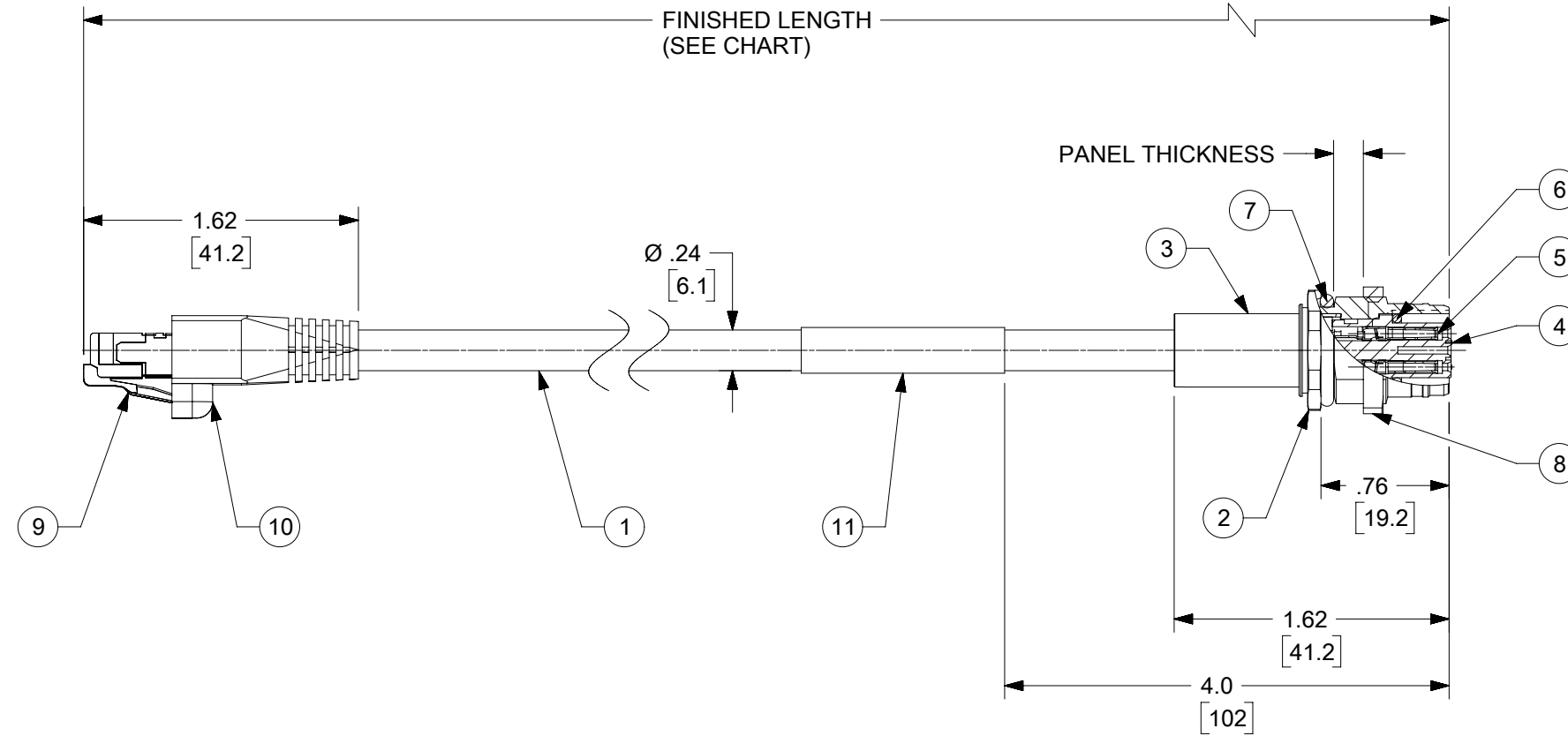
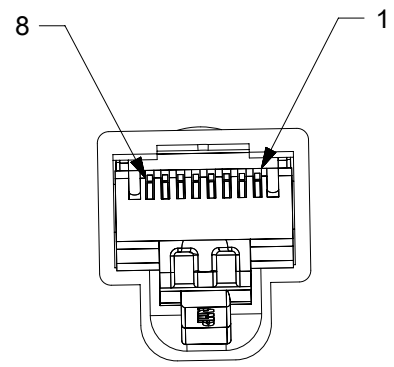
# ERWPAU7004M003

LENGTH  
M001 = .1 METERS  
M010 = 1.0 METERS  
M100 = 10 METERS



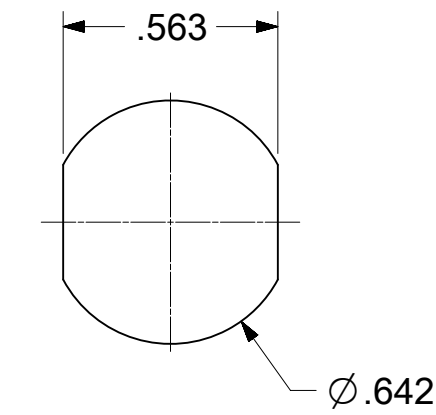
## PART NUMBER MATRIX

RJ45 PLUG FACE VIEW

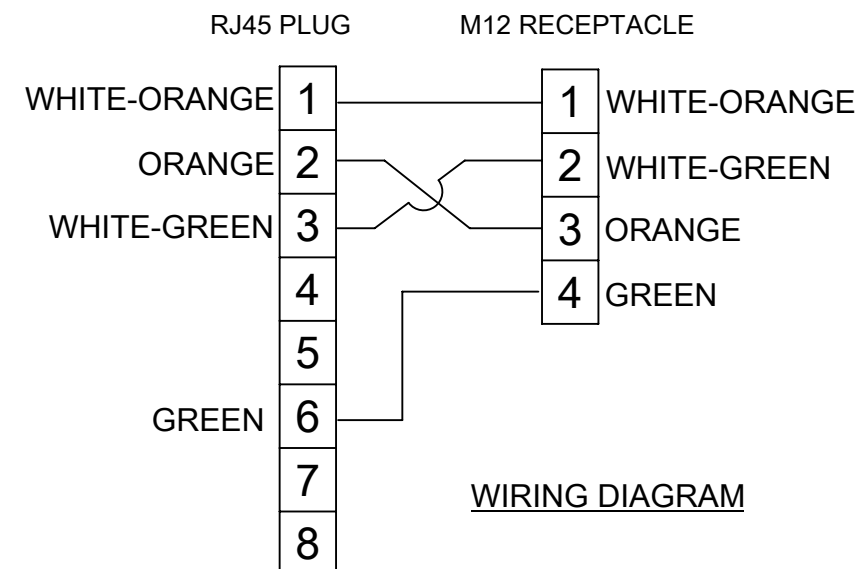


M12 FEMALE FACE VIEW

- NOTES:
1. MATERIAL: AS NOTED
  2. FINISH: AS NOTED
  3. ELECTRICAL:  
VOLTAGE: 125V  
CURRENT: 1.5A
  4. TEMP RATING: -20°TO +75°C
  5. PROTECTION: IP67 (WHEN MATED)
  6. COUPLING THREAD: M12 X 1.0
  7. MAX PANEL THICKNESS: 8mm
  8. ALL DIMS ARE FOR REFERENCE UNLESS NOTED OTHERWISE



PANEL CUTOUT



CABLE FLEX DATA:  
ROLLING BEND: 1 MILLION CYCLES @ 4 IN. DIA. MANDREL  
10 MILLION CYCLES @ 8 IN. DIA. MANDREL

TORSIONAL FLEX: 3 MILLION CYCLES PER MIL C-13777G

CABLE LENGTH TOLERANCES	
>.3M [1FT]:	+19mm-0 [ +.75in-0]
.3 - .9M [1 - 3FT]:	+44.5mm-0 [+1.75in-0]
.9 - 1.8M [3 - 6FT]:	+55.6mm-0 [+2.19in-0]
1.8 - 3.7M [6 - 12FT]:	+88.9mm-0 [+3.50in-0]
3.7 - 7.3M [12 - 24FT]:	+165.1mm-0 [+6.50in-0]
7.3-14.6M [24 - 48FT]:	+317.5mm-0 [+12.50in-0]
14.6 - 30.5M [48-100FT]:	+622.3mm-0 [+24.50in-0]
OVER 30M [100FT]	+2% OF FINISHED LENGTH

11	WRAP LABEL	VINYL	BLACK/YELLOW
10	RJ45 BOOT (HOODED)	PVC	BLACK
9	RJ45 PLUG	POLY CARB/ PHOS-BRNZ	GOLD PLATED CONTACTS
8	PANEL NUT	BRASS	NICKEL PLATED
7	PANEL O-RING	BUNA	BLACK
6	MATING O-RING	VITON	RED
5	CONTACT SOCKET	Cu ALLOY	GOLD PLATED
4	INSERT	PUR	BLACK
3	RECEPTACLE SLEEVE	BRASS	NICKEL PLATED
2	RECEPTACLE SHELL	BRASS	NICKEL PLATED
1	CABLE, 24/4	TPE JACKET	TEAL
ITEM	DESCRIPTION	MATERIAL	FINISH

<b>SYMBOLS</b> ▽ = 0 ▽ = 0 ▽ = 0 ▽ = 0 ▽ = 0 ▽ = 0 ▽ = 0 ▽ = 0 ▽ = 0	THIS DRAWING CONTAINS INFORMATION THAT IS PROPRIETARY TO MOLEX ELECTRONIC TECHNOLOGIES, LLC AND SHOULD NOT BE USED WITHOUT WRITTEN PERMISSION		CURRENT REV DESC: RELEASED			
	<b>DIMENSION UNITS</b> <b>HYBRID</b>	<b>SCALE</b> <b>1:1</b>	EC NO: 172389 DRWN: RSTONE      2018/02/16 CHK'D: RSTONE      2018/02/19 APPR: BWOODMAN      2018/03/03			<b>M12 RECEPT. D-CODE TO RJ45 PLUG 24/4 TPE</b>
	GENERAL TOLERANCES (UNLESS SPECIFIED) ANGULAR TOL ± °		INITIAL REVISION: DRWN: RSTONE      2018/02/16 APPR: BWOODMAN      2018/03/03			<b>PRODUCT CUSTOMER DRAWING</b>
	4 PLACES ± 3 PLACES ± 2 PLACES ± 1 PLACE ±		DRAFT WHERE APPLICABLE MUST REMAIN WITHIN DIMENSIONS			<b>DOCUMENT NUMBER</b> <b>1201080673</b>
<b>THIRD ANGLE PROJECTION</b> 		<b>DRAWING</b> <b>C-SIZE</b>	<b>SERIES</b> <b>120108</b>	<b>MATERIAL NUMBER</b> SEE MATERIAL NO. CHART	<b>CUSTOMER</b> PSD 000 A <b>SHEET NUMBER</b> 1 OF 1	