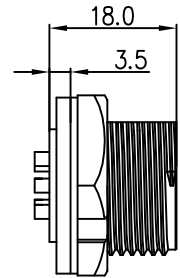


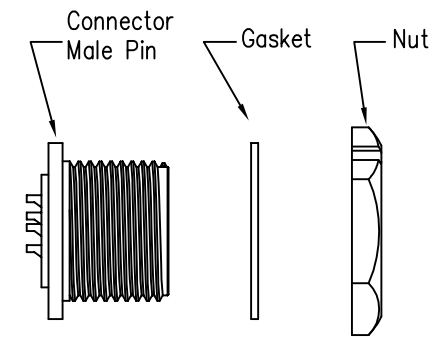
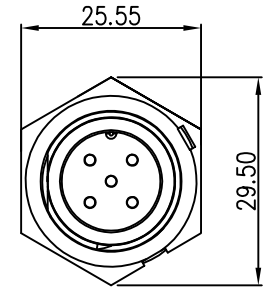
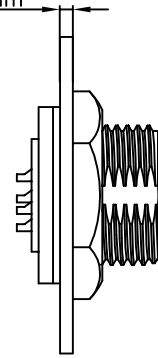
REV.	ECN NO.	DESCRIPTION	SIGN	DATE
C1	N/A	INITIAL DRAWING	Liu	2020/05/17



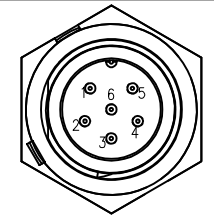
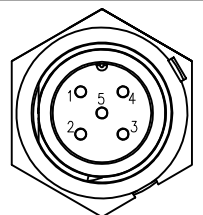
Recommended Panel Cut-Out



Panel T: Max 3.5mm



23XXX515-01  
Pin Number



5 Pin

6 Pin

P/N: 23005515-01

P/N: 23006515-01

Pin Assignments Front View

UNIT: mm	
TOLERANCE	
.X	±0.25
.XX	±0.15
.XXX	±0.05
ANGLES	±1°

DESCRIPTION Middle Series Screw Type Front Mount With Male Pin			
SCALE:	1:1	SHEET	1 OF 1
REV.	C1	SIZE	A4
* : Inspection Item			

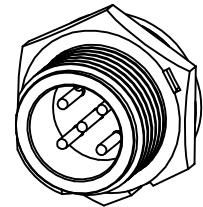
**CHOGORI**

PART NO	23XXX515-01
DWG NO	
CUSTOMER	

DRAWN BY	Liu
CHECKED BY	Mo
APPROVED BY	Adley

DATE	2020/05/17
DATE	2020/05/17
DATE	2020/05/17

- Specification:
- 1.Operation Temperature: -45°C~105°C.
  - 2.Insulation Resistance: 100MΩ at DC500V.
  - 3.Contact Resistance: <math>< 10\text{m}\Omega</math>
  - 4.Withstand Voltage: 1500V AC
  - 5.Operating Current: 10A
  - 6.Operating Voltage: AC 125V
  - 7.Waterproof Rate: IP67 (Mated)
  - 8.Housing: Nylon, Black
  - 9.Male Pin: Copper Alloy, Gold Plated
  - 10.Gasket: Silicon Gray
  - 11.Panel Nut: Nylon, Black
  - 12.Torque Rate: 0.8~1.0N • m
  - 13.RoHS Compliant.
  - 14.UL Compliant.
  - 15.Mating Cap P/N: 806-00021-00



THIS INFORMATION IS CONFIDENTIAL AND IS DISCLOSED TO YOU ON CONDITION THAT NO FURTHER DISCLOSURE IS MADE BY YOU TO OTHER THAN CHOGORI PERSONNEL WITHOUT AUTHORIZATION FROM CHOGORI CORP.