

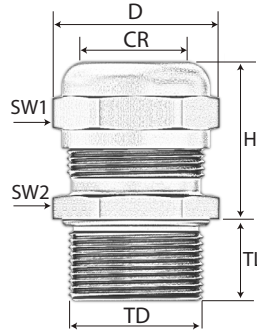
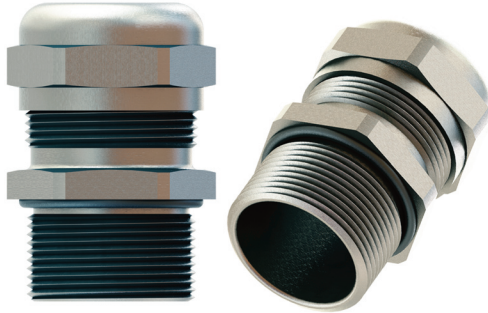
Metal Cable Glands

CG 300 Metric

Nickel plated brass cord grip with standard or longer thread

Metric Thread

Impact resistant, suitable for industrial applications, water tight, corrosion resistant.



Technical data:

Material:	Brass, Nickel Plated
Clamping Insert:	Polyamide 6
Seal:	Chloroprene (CR)
O-Ring:	Neoprene (NBR)
Protection type:	IP 68 - 5 Bar NEMA 4X
Temperature range:	
<i>permanent:</i>	-20°C to +100°C
<i>intermittent:</i>	-40°C to +150°C
Flammability:	V2 (according to UL 94)
Approvals:	cURus, cULus, DNV-GL, CE



Part Number	Part Number with long threads	Thread Type	Clamping Range Ø min-max		Outer Diameter (D) inches	Wrenching Flats Cap Body		Thread Diameter (TD) inches	Thread Length (TL) inches	Long Thread Length (TL) inches	Max. Height (H) inches	UL
			(CR) inches	mm		(SW1) inches	(SW2) inches					
Metric												
MMS-12R ¹	MMS-12RL	M12x1.5	0.079 - 0.197	2.0 - 5.0	0.610	0.551	0.551	0.472	0.236	0.472	0.945	-
MMS-12 ¹	MMS-12L	M12x1.5	0.118 - 0.256	3.0 - 6.5	0.610	0.551	0.551	0.472	0.236	0.472	0.945	cURus
MMS-16R	MMS-16RL	M16x1.5	0.079 - 0.236	2.0 - 6.0	0.787	0.669	0.709	0.630	0.276	0.472	1.004	-
MMS-16	MMS-16L	M16x1.5	0.157 - 0.315	4.0 - 8.0	0.787	0.669	0.709	0.630	0.276	0.472	1.004	cURus
MMS-16RC	MMS-16RCL	M16x1.5	0.118 - 0.276	3.0 - 7.0	0.866	0.787	0.787	0.630	0.276	0.472	1.201	-
MMS-16C	MMS-16CL	M16x1.5	0.197 - 0.394	5.0 - 10.0	0.866	0.787	0.787	0.630	0.256	0.472	1.240	cURus
MMS-20R	MMS-20RL	M20x1.5	0.197 - 0.354	5.0 - 9.0	0.965	0.866	0.866	0.787	0.315	0.472	1.102	-
MMS-20	MMS-20L	M20x1.5	0.236 - 0.472	6.0 - 12.0	0.965	0.866	0.866	0.787	0.315	0.472	1.043	cULus
MMS-20C	MMS-20CL	M20x1.5	0.394 - 0.551	10.0 - 14.0	1.043	0.945	0.945	0.787	0.315	0.472	1.181	cULus
MMS-25R	MMS-25RL	M25x1.5	0.276 - 0.472	7.0 - 12.0	1.181	0.945	1.063	0.984	0.315	0.472	1.181	-
MMS-25*	MMS-25L	M25x1.5	0.394 - 0.551	10.0 - 14.0	1.181	0.945	1.063	0.984	0.315	0.472	1.181	cULus
MMS-25RC	MMS-25RCL	M25x1.5	0.433 - 0.669	11.0 - 17.0	1.181	1.063	1.063	0.984	0.315	0.472	1.280	cULus
MMS-25C	MMS-25CL	M25x1.5	0.512 - 0.709	13.0 - 18.0	1.299	1.181	1.181	0.984	0.315	0.472	1.378	cULus
MMS-32R	MMS-32RL	M32x1.5	0.354 - 0.630	9.0 - 16.0	1.476	1.181	1.339	1.260	0.354	0.591	1.378	-
MMS-32*	MMS-32L	M32x1.5	0.512 - 0.709	13.0 - 18.0	1.476	1.181	1.339	1.260	0.354	0.591	1.378	cULus
MMS-32RC	MMS-32RCL	M32x1.5	0.591 - 0.827	15.0 - 21.0	1.476	1.339	1.339	1.260	0.315	0.591	1.496	cULus
MMS-32C	MMS-32CL	M32x1.5	0.709 - 0.984	18.0 - 25.0	1.752	1.575	1.575	1.260	0.354	0.591	1.811	cULus
MMS-40R	MMS-40RL	M40x1.5	0.472 - 0.787	12.0 - 20.0	1.909	1.575	1.693	1.575	0.354	0.591	1.594	-
MMS-40*	MMS-40L	M40x1.5	0.709 - 0.984	18.0 - 25.0	1.909	1.575	1.693	1.575	0.354	0.591	1.594	cULus
MMS-40RC	MMS-40RCL	M40x1.5	0.748 - 1.102	19.0 - 28.0	1.909	1.693	1.693	1.575	0.354	0.591	1.791	cULus
MMS-40C	MMS-40CL	M40x1.5	0.866 - 1.260	22.0 - 32.0	2.185	1.969	1.969	1.575	0.354	0.591	2.146	cULus
MMS-50R	MMS-50RL	M50x1.5	0.787 - 1.024	20.0 - 26.0	2.402	1.969	2.165	1.969	0.354	0.591	1.969	-
MMS-50	MMS-50L	M50x1.5	0.866 - 1.260	22.0 - 32.0	2.402	1.969	2.165	1.969	0.354	0.591	1.969	cULus
MMS-50RC	MMS-50RCL	M50x1.5	1.063 - 1.496	27.0 - 38.0	2.520	2.283	2.283	1.969	0.354	0.591	2.126	cULus
MMS-50C	MMS-50CL	M50x1.5	1.339 - 1.732	34.0 - 44.0	2.756	2.520	2.520	1.969	0.354	0.591	2.165	cULus
MMS-63R	MMS-63RL	M63x1.5	1.142 - 1.378	29.0 - 35.0	2.953	2.520	2.677	2.480	0.551	0.709	2.165	-
MMS-63	MMS-63L	M63x1.5	1.339 - 1.732	34.0 - 44.0	2.953	2.520	2.677	2.480	0.551	0.709	2.165	cULus
MMS-63C	MMS-63CL	M63x1.5	1.457 - 2.087	37.0 - 53.0	3.268	2.953	2.953	2.480	63	0.709	2.087	cULus

* Other clamping ranges available

¹ Not NEMA 4X rated

Larger thread sizes (M72 to M120) available upon request

Locknuts need to be purchased separately, see page N/27



www.sabcable.com
866-722-2974 ■ info@sabcable.com