

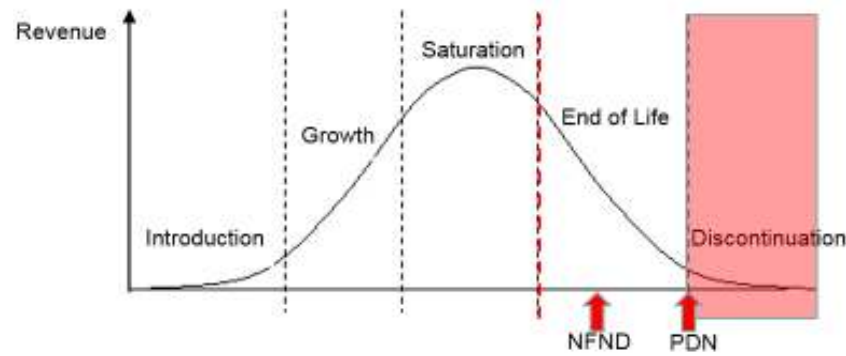
Light is OSRAM

Product Discontinuation (acc. JEDEC J-STD-048) OS-PD-2017-070

1-Nov-2017

Last order:	30-Nov-2017
Last delivery:	31-May-2018
Reason:	Portfolio clean up

*) orders via sample channel possible till end of November 2017. From December 2017 standard orders are possible



Please direct your feedback to your local Sales office.

DISCONTINUED				NEW (REPLACEMENT)			
Device	Ordering Code	Function	Brand	Device	Datasheet Ordering Code	Function	Brand
SPL BK91-20							
SPL BK91-20 (910 +/-5NM)	Q65112A4959	Laser	Laser Bar	no replacement Q#			
SPL BK91-20 (912 +/-5NM)	Q65111A7636	Laser	Laser Bar				
SPL BK94-20							
SPL BK94-20 (929 +/-5NM)	Q65111A7635	Laser	Laser Bar	no replacement Q#			
SPL BK94-20 (931 +/-2NM)	Q65112A4129	Laser	Laser Bar	no replacement Q#			
SPL BK94-20 (931 +/-5NM)	Q65112A4128	Laser	Laser Bar	no replacement Q#			
SPL BK98-20							
SPL BK98-20 (967 +/-5NM)	Q65111A7633	Laser	Laser Bar	no replacement Q#			
SPL BK98-20 (970 +/-5NM)	Q65112A4960	Laser	Laser Bar	no replacement Q#			
SPL BZ98-20							
SPL BZ98-20 (972 +/-5NM)	Q65111A7680	Laser	Laser Bar	no replacement Q#			
SPL BZ102-20							
SPL BZ102-20 (1013 +/-5NM)	Q65111A7665	Laser	Laser Bar	no replacement Q#			
SPL BZ91-20							
SPL BZ91-20 (912 +/-5NM)	Q65111A7668	Laser	Laser Bar	no replacement Q#			
SPL BZ94-20							
SPL BZ94-20 (935 +/-5NM)	Q65111A7679	Laser	Laser Bar	no replacement Q#			
SPL BZ91-40-7				SPL EN91-40-8			
SPL BZ91-40-7 (909 +/-3NM)	Q65111A7187	Laser	Laser Bar	SPL EN91-40-8-10B (909 +/-5NM)	Q65112A5060*	Laser	Laser Bar
SPL BZ91-40-7 (912 +/-3NM)	Q65111A7666	Laser	Laser Bar	SPL EN91-40-8-10B (909 +/-5NM)	Q65112A5060*	Laser	Laser Bar
SPL BZ94-40-7				SPL BN94-40-8			
SPL BZ94-40-7 (955 +/-5NM)	Q65112A2034	Laser	Laser Bar	SPL BN94-40-8 (935 +/-3NM)	Q65112A2858	Laser	Laser Bar
SPL BZ94-40-7 (957,5 +/-2NM)	Q65112A2717	Laser	Laser Bar	SPL BN94-40-8 (935 +/-3NM)	Q65112A2858	Laser	Laser Bar
SPL BZ98-40-7				SPL BN98-40-8			
SPL BZ98-40-7 (969 +/-3nm)	Q65112A2719	Laser	Laser Bar	SPL BN98-40-8 (969 +/-3NM)	Q65112A2859	Laser	Laser Bar
SPL DZ91-40-7				SPL EN91-40-8			
SPL DZ91-40-7 (909 +/-5NM)	Q65112A2030	Laser	Laser Bar	SPL EN91-40-8-10D (909 +/-5NM)	Q65112A5041	Laser	Laser Bar
SPL DZ98-40-7				SPL DN98-40-8			
SPL DZ98-40-7 (957 +/-2NM)	Q65112A2032	Laser	Laser Bar	SPL DN98-40-8 (969 +/-3NM)	Q65112A2863	Laser	Laser Bar
SPL DZ98-40-7 (960 +/-3NM)	Q65112A3131	Laser	Laser Bar	SPL DN98-40-8 (969 +/-3NM)	Q65112A2863	Laser	Laser Bar
SPL DZ98-40-7 (966 +/-2NM)	Q65112A2033	Laser	Laser Bar	SPL DN98-40-8 (969 +/-3NM)	Q65112A2863	Laser	Laser Bar
SPL DZ98-40-7 (967 +/-2NM)	Q65112A3100	Laser	Laser Bar	SPL DN98-40-8 (969 +/-3NM)	Q65112A2863	Laser	Laser Bar
SPL DZ98-40-7 (971 +/-2NM)	Q65112A4229	Laser	Laser Bar	SPL DN98-40-8 (969 +/-3NM)	Q65112A2863	Laser	Laser Bar
SPL BN91-40-8				SPL EN91-40-8			
SPL BN91-40-8 (909 +/-5NM)	Q65112A2857	Laser	Laser Bar	SPL EN91-40-8-10B (909 +/-5NM)	Q65112A5060*	Laser	Laser Bar
SPL DN91-40-8				SPL EN91-40-8			
SPL DN91-40-8 (909 +/-5NM)	Q65112A2860	Laser	Laser Bar	SPL EN91-40-8-10D (909 +/-5NM)	Q65112A5041*	Laser	Laser Bar
SPL BJ91-40-8				SPL EJ91-40-8			
SPL BJ91-40-8 (909 +/-5NM)	Q65112A2720	Laser	Laser Bar	SPL EJ91-40-8-10B (909 +/-5NM)	Q65112A5002*	Laser	Laser Bar
SPL DJ91-40-8				SPL EJ91-40-8			
SPL DJ91-40-8 (909 +/-5NM)	Q65112A2721	Laser	Laser Bar	SPL EJ91-40-8-10D (909 +/-5NM)	Q65112A5001*	Laser	Laser Bar
SPL BM81-12							
SPL BM81-12 (803 +/-3NM)	Q65111A7631	Laser	Laser Bar	no replacement Q#			

DISCONTINUED				NEW (REPLACEMENT)			
Device	Ordering Code	Function	Brand	Device	Datasheet Ordering Code	Function	Brand
SPL BM81-12 (806 +/-2NM)	Q65112A3967	Laser	Laser Bar	no replacement Q#			

