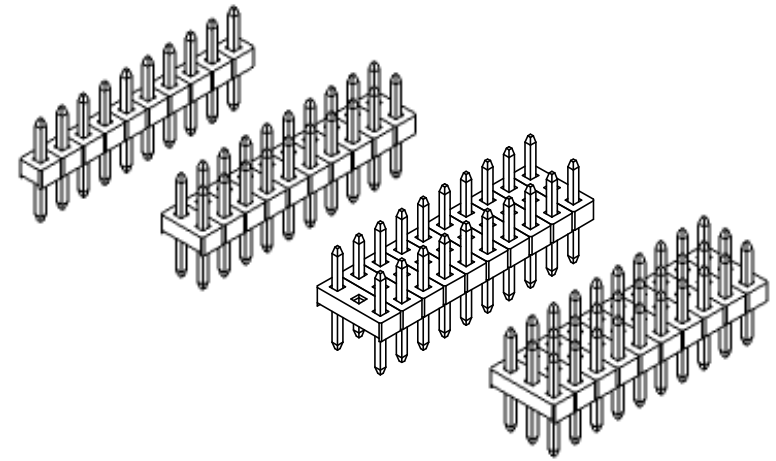
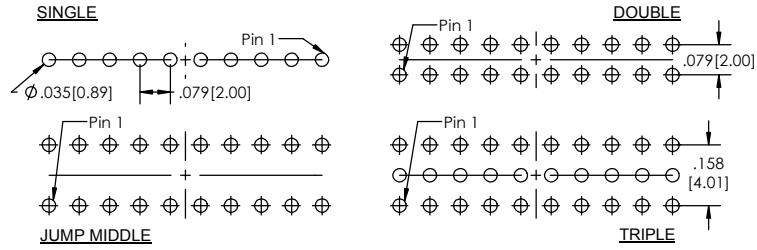


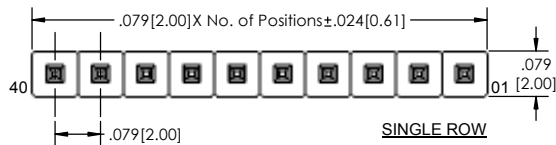
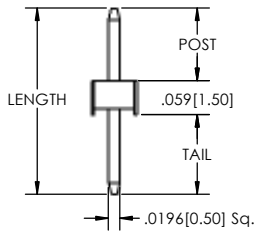
**Recommended P.C. Board Layout**  
SCALE 4:1



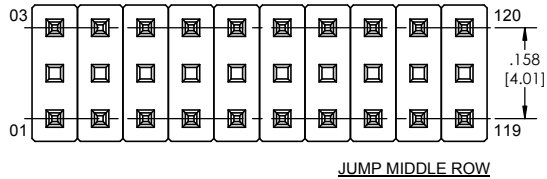
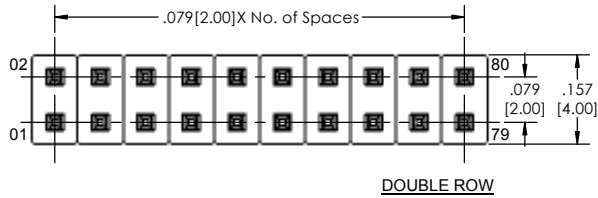
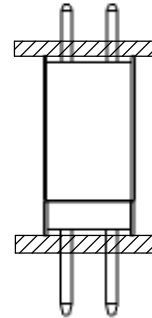
TSHS-2 **XX** - **X** - **XX** - **XX** - **XX** - **XXX** - **X** - **LF**  
(A) (B) (C) (D) (E) (F) (G) (H)

- A. Pins Per Row**  
- 1 through 40
- B. Row Specification**  
- S= Single Row  
- D= Double Row  
- J= Jump Middle Row  
- T= Triple Row
- C. Pin Options**  
- See Pin Options below
- D. Plating Options**  
- See Plating Options below
- E. Lock Tight "LT" (Optional)**  
- Leave blank if not needed  
- LT= With
- F. Polarized Position**  
- Leave blank if not needed  
- If required, specify empty pin position  
- e.g. 012 for Pin 12
- G. Every Other Pin Filled (Option Only for Triple Row)**  
- Leave blank if not needed  
- E= Filled
- H. Lead Free**

Mates with:  
BCSS,  
BSSH,  
BSSHC,  
BSSQ,  
BSSQC,  
BSSQM,  
LSMBC,  
LSSHSM,  
SMBC,  
SSHQ,  
SSHQR,  
SSHR,  
SSHS,  
SSHSM,  
ULSMBC.



**APPLICATION**



Plating options	
G	-10µ Gold on Contact Area/ Flash on Tail
T	-Matte Tin all Over
GT	-10µ Gold on Contact Area/ Matte Tin on Tail
H	-30µ Gold on Contact Area/ Matte Tin on Tail
F	-Gold Flash over Entire Pin
FT	-Gold Flash on Contact Area/ Matte Tin on Tail

**Specifications:**  
Current Rating: 3.0 Ampere  
Insulation Resistance: 1000M Ohms Min.  
Dielectric Withstanding: 500V AC  
Contact Resistance: 20M Ohms Max.  
Operation Temperature: -40°C to +105°C  
Max. Process Temperature  
Peak: 260°C up to 10 secs.  
Process: 230°C up to 60 secs.  
Wave: 260°C up to 6 secs.  
Manual Solder: 350°C up to 5 secs.

**Materials:**  
Contact Material: Phosphor Bronze  
Insulator Material: Nylon 6T  
Plating: Au or Sn over 50µ" (1.27) Ni

Pin Options			
Length	Post Height	Tail Length	
.126 [3.20mm]	.146 [3.71mm]	.138 [3.51mm]	02
.323 [8.20mm]	.146 [3.71mm]	.118 [3.00mm]	04
.158 [4.01mm]	.106 [2.70mm]		06
.126 [3.20mm]	.121 [5.38mm]		08
.397 [10.08mm]	.146 [3.71mm]	.192 [4.88mm]	10
.158 [4.01mm]	.180 [4.57mm]		12
.126 [3.20mm]	.232 [5.89mm]		14
.417 [10.59mm]	.146 [3.71mm]	.212 [5.38mm]	16
.158 [4.01mm]	.200 [5.08mm]		18
.126 [3.20mm]	.370 [9.40mm]		20
.555 [14.10mm]	.146 [3.71mm]	.350 [8.90mm]	22
.158 [4.01mm]	.338 [8.59mm]		24
.126 [3.20mm]	.390 [9.91mm]		26
.575 [14.61mm]	.146 [3.71mm]	.370 [9.40mm]	28
.158 [4.01mm]	.358 [9.09mm]		30

Tails may be clipped to achieve specific dimensions.  
Products cut to specific sizes are uncancellable/ nonreturnable.  
Parts are subject to change without notice.



**PROPRIETARY AND CONFIDENTIAL**  
THE INFORMATION CONTAINED IN THIS DRAWING IS THE SOLE PROPERTY OF Major League Electronics. ANY REPRODUCTION IN PART OR AS A WHOLE WITHOUT THE WRITTEN PERMISSION OF Major League Electronics IS PROHIBITED.

UNLESS OTHERWISE SPECIFIED:		NAME		DATE	
DIMENSIONS ARE IN INCHES		DRAWN	EOW	02/06/14	
TOLERANCES:		CHECKED	GWE	02/06/14	
ONE DECIMALS ±.100		ENG APPR.			
TWO DECIMAL ±.100		MFG APPR.			
THREE DECIMAL ±.005		ADDRESS:			
FOUR DECIMAL ±.002		2533 Centennial Blvd. Jeffersonville, IN 47130 Phone: 812-670-4174 Fax: 812-670-4175 E-Mail: mle@mlelectronics.com			
NEXT ASSY		USED ON		FINISH	
APPLICATION		DO NOT SCALE DRAWING		TITLE: TSHS-2 SERIES	
				SIZE DWG. NO.	
				C	
				REV B	
				SCALE 6:1	
				SHEET 1 OF 1	

