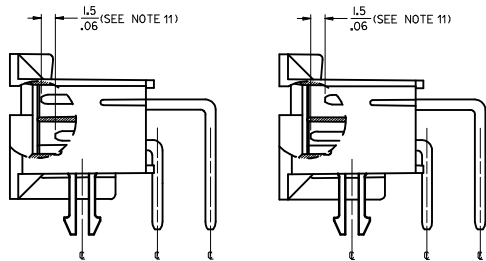
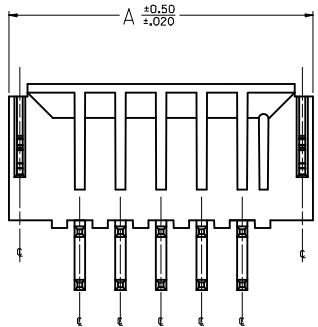


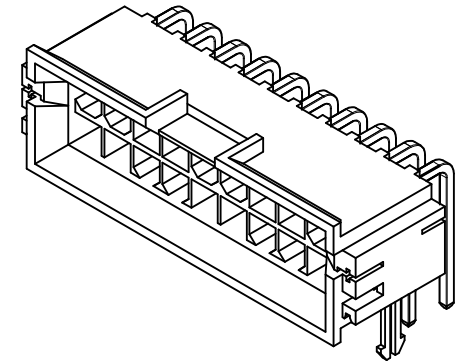
NOTES

- 1) MATERIALS
HOUSING: NYLON 4/6 UL 94V-0 GLASS FILLED, COLOR: BLACK
TERMINAL: BRASS
BOARD RETENTION CLIP: BRASS
- 2) FINISHES:
TERMINAL:
1. $(0.00254) \times 0.000100$ MIN. MATTE TIN OVER $(0.00127) \times 0.000050$ MIN. NICKEL
2. $(0.000076) \times 0.000030$ MIN. SELECT GOLD AND $(0.00254) \times 0.000100$ MIN. SELECT MATTE TIN OVER $(0.00127) \times 0.000050$ MIN. NICKEL OVERALL
MOUNTING CLIP:
 $(0.00254) \times 0.000100$ MIN. MATTE TIN OVER $(0.00127) \times 0.000050$ MIN. NICKEL
- 3) PRODUCT SPECIFICATION: PS-43810-001
- 4) PACKAGING SPECIFICATION: PK-43810-001
- 5) PARTS MATES WITH MOLEX RECEPTACLE #5557, #42474, AND #44516 AND HEADER #42385
- 6) PART ALLOWS FOR $(1.27) \times 0.050$ MAX MIS-ALIGNMENT WITH MATING HOUSINGS IN ANY DIRECTION
- 7) CONNECTOR ASSEMBLIES ARE NOT TO BE MATED AND UNMATED WHILE CIRCUITS ARE LIVE
- 8) PARTS ARE NOT DESIGNED FOR CURRENT SHARING
- 9) DISCOLORATION IN THE BANDOLIER CARRIER AREA OF THE PIN IS INHERENT TO THE PLATING PROCESS AND IS DUE TO THE MASKING EFFECT OF THE CARRIER. THIS DISCOLORATION IS IN A NON-FUNCTIONAL AREA OF THE PIN AND WILL NOT AFFECT THE PERFORMANCE OF THE HEADER ASSEMBLY.
- 10) PART CONFORMS TO CLASS "B" REQUIREMENTS OF COSMETIC SPECIFICATION PS-45499-002
- 11) CIRCUITS SHOWN PROVIDE MATE-FIRST/BREAK-LAST FEATURE, SEE CHART ON SHEET 2 FOR CIRCUIT LOCATIONS. FOR PRODUCT NOT REQUIRING MATE-FIRST/BREAK-LAST OPTIONS, SEE DRAWINGS SD-43810-011, -031, -051 AND -071.
- 12) CLIPS WILL APPEAR DIFFERENTLY ON ACTUAL PARTS DEPENDING ON PCB THICKNESS.

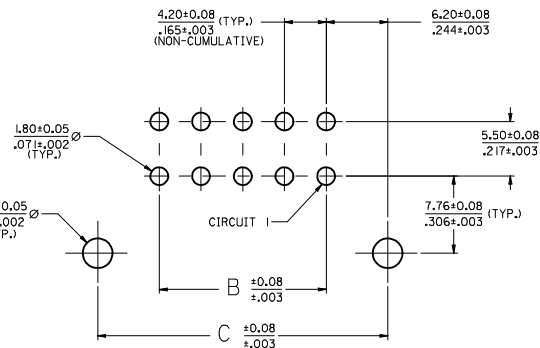


DETAIL A

HEADER ASSEMBLY WITH NO CLIP OPTION



20 CKT SHOWN



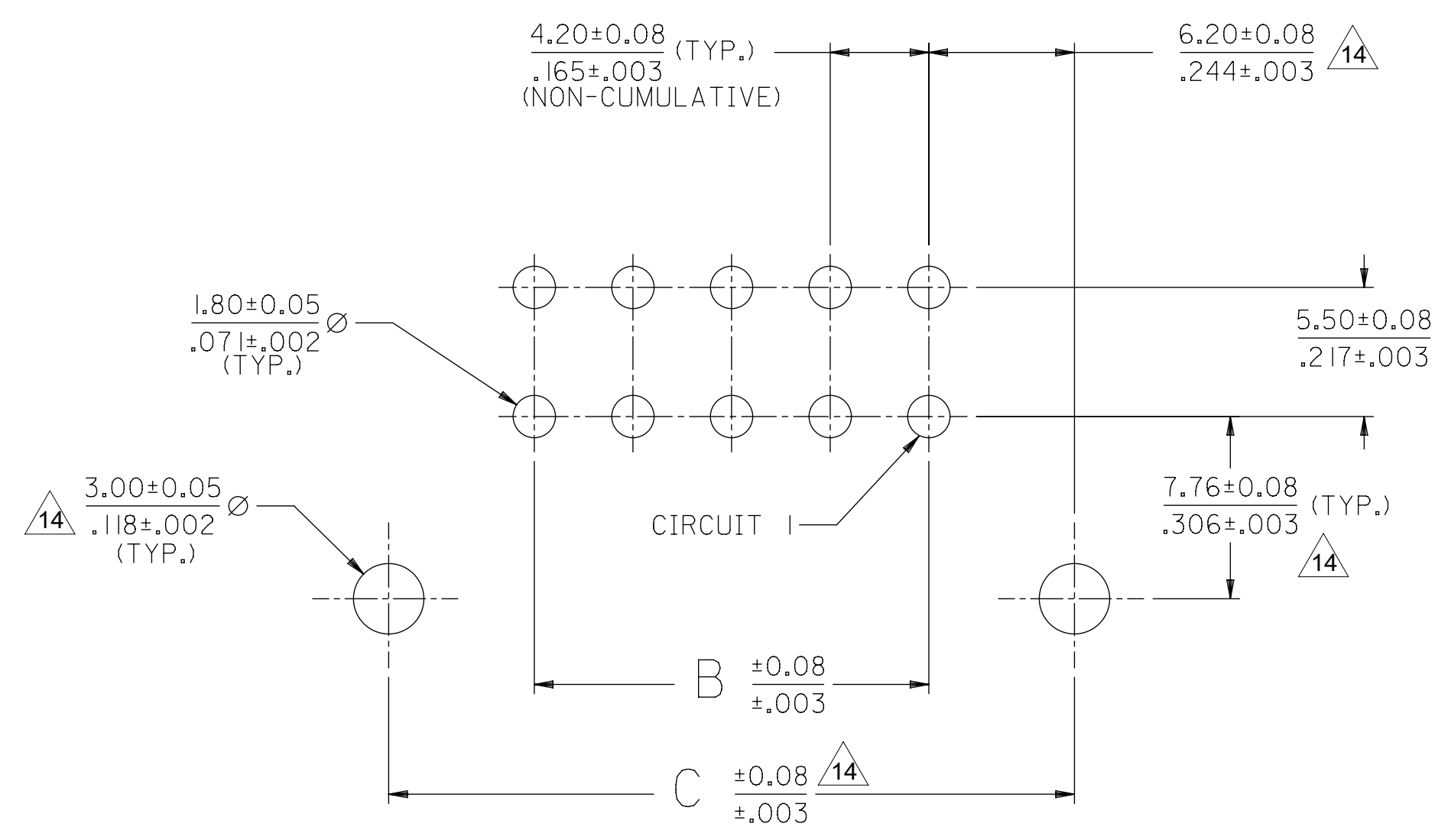
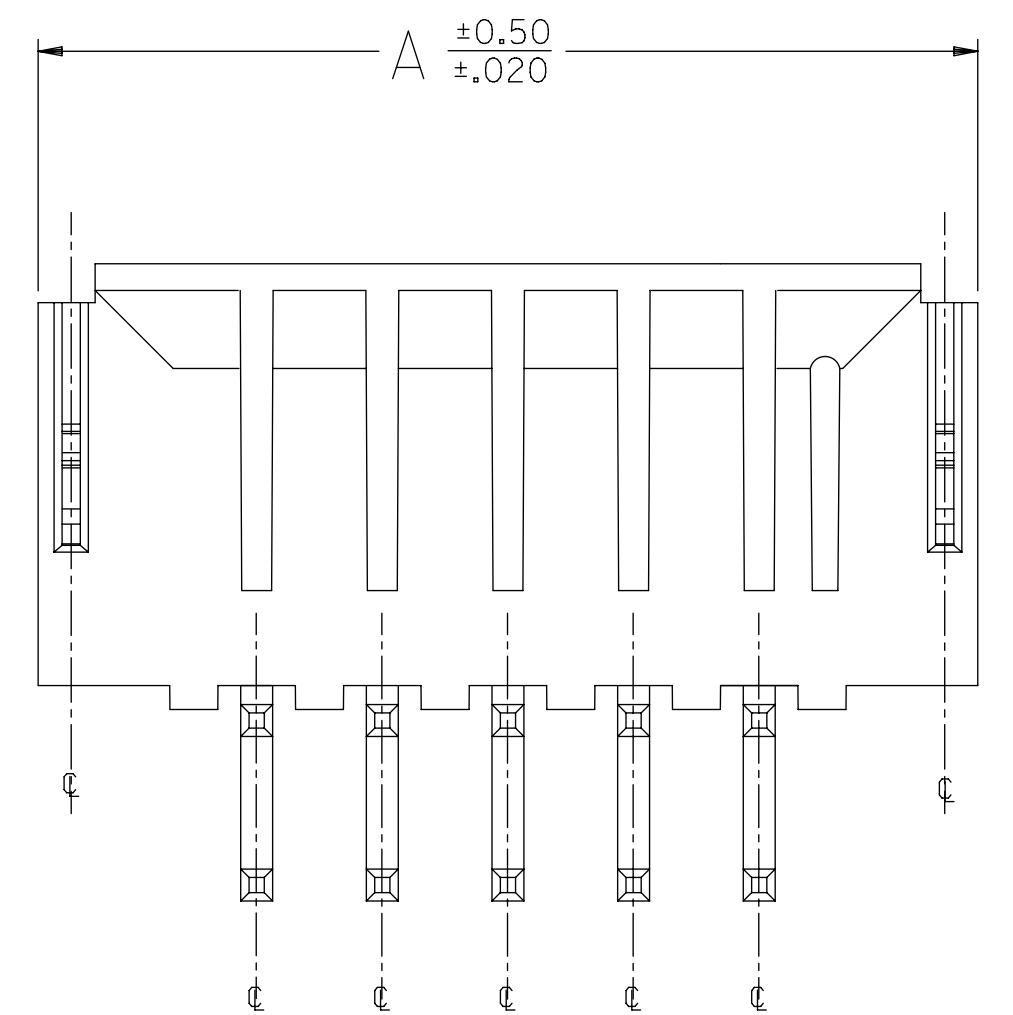
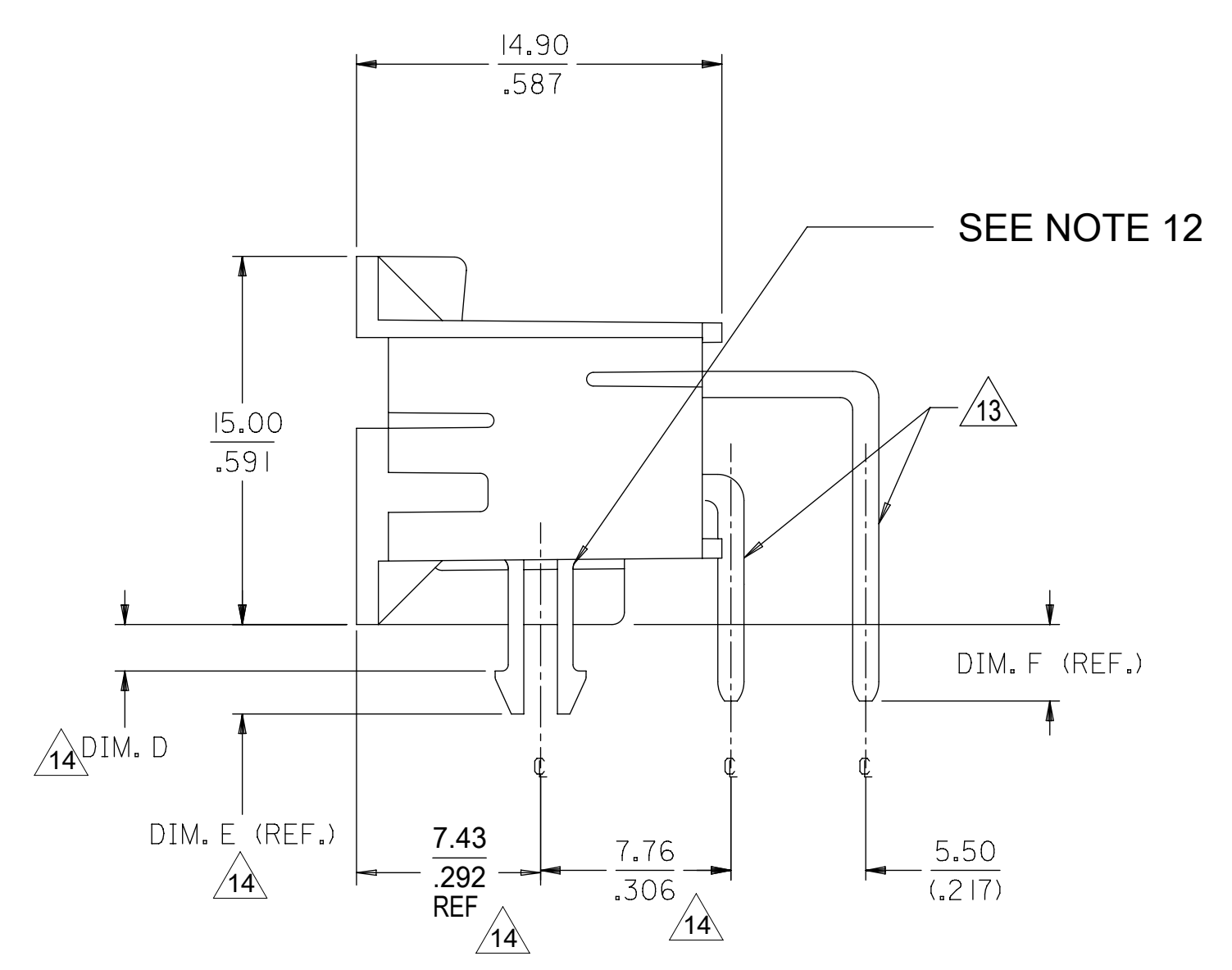
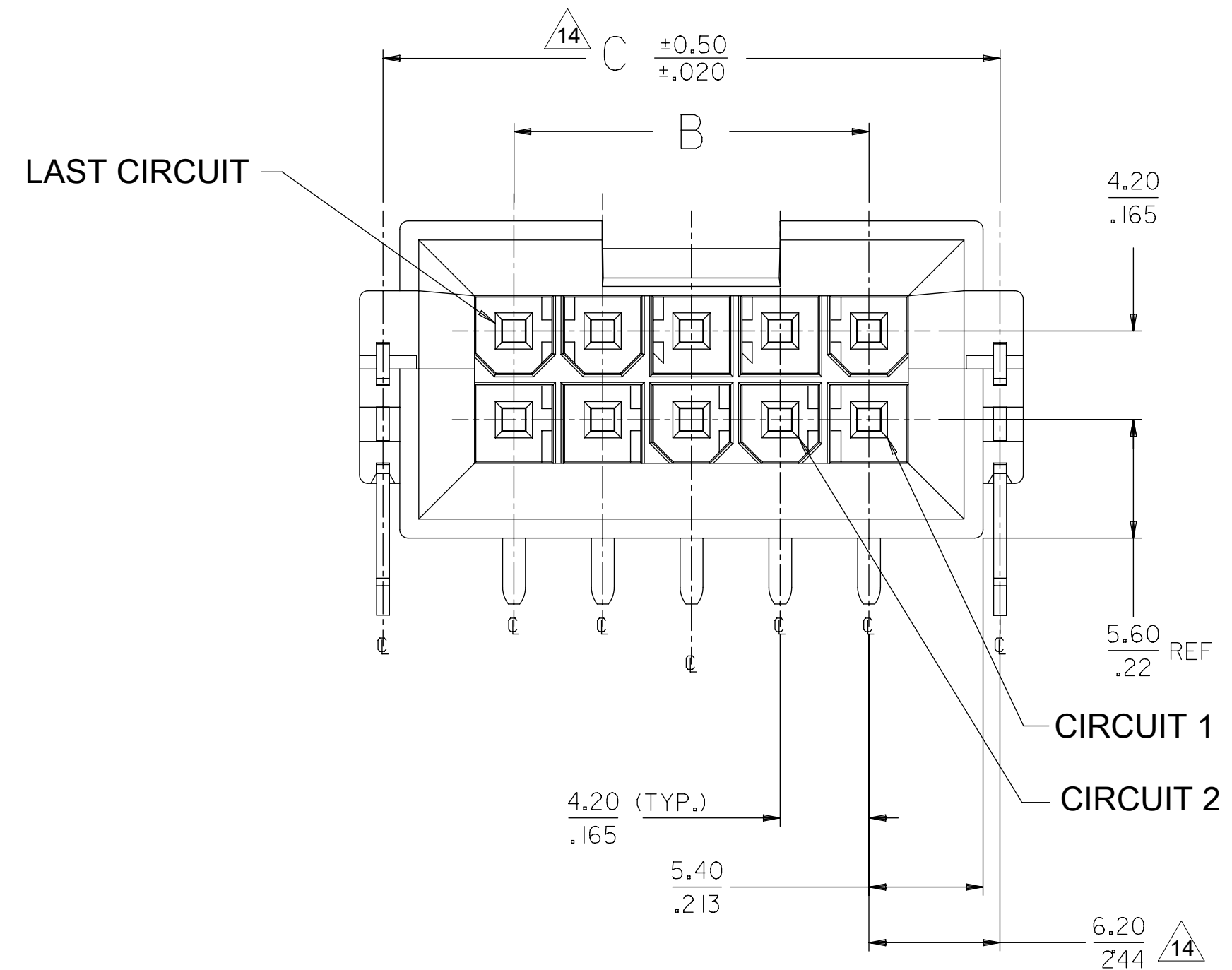
PCB LAYOUT COMPONENT SIDE
SEE CHART ON SHEET 2 FOR RECOMMENDED NOMINAL PCB THICKNESS

ADD 43810-1010 ELEC NO: UICP2014-2528 DRAWN BY: WANG CHECKED BY: BANDURA APPROVED BY: FSMITH DATE: 2013/12/12 DATE: 2013/12/12 DATE: 2013/12/19	QUALITY SYMBOLS	GENERAL TOLERANCES (UNLESS SPECIFIED)	DIMENSION STYLE	SCALE	DESIGN UNITS	THIRD ANGLE PROJECTION	
	$\nabla=0$ $\nabla=0$ $\nabla=0$	mm INCH 4 PLACES \pm --- \pm --- 3 PLACES \pm --- ± 0.10 2 PLACES ± 0.25 ± 0.015 1 PLACE ± 0.38 \pm --- 0 PLACE \pm \pm	MM/MIN	4:1	METRIC	DRAWN BY: WANG DATE: 1/5/2002 CHECKED BY: BANDURA DATE: 1/5/2002 APPROVED BY: FSMITH DATE: 2012/01/19	TITLE: MINI-FIT JR BMI RIGHT ANGLE HEADER ASSY. SELECT. LOADED, M-F/B-L MATERIAL NO. SEE SHEET 2 DOCUMENT NO. SD-43810-080
	ANGULAR $\pm 1/2^\circ$ DRAFT WHERE APPLICABLE MUST REMAIN WITHIN DIMENSIONS	SIZE D THIS DRAWING CONTAINS INFORMATION THAT IS PROPRIETARY TO MOLEX INCORPORATED AND SHOULD NOT BE USED WITHOUT WRITTEN PERMISSION					SHEET NO. 1 OF 2

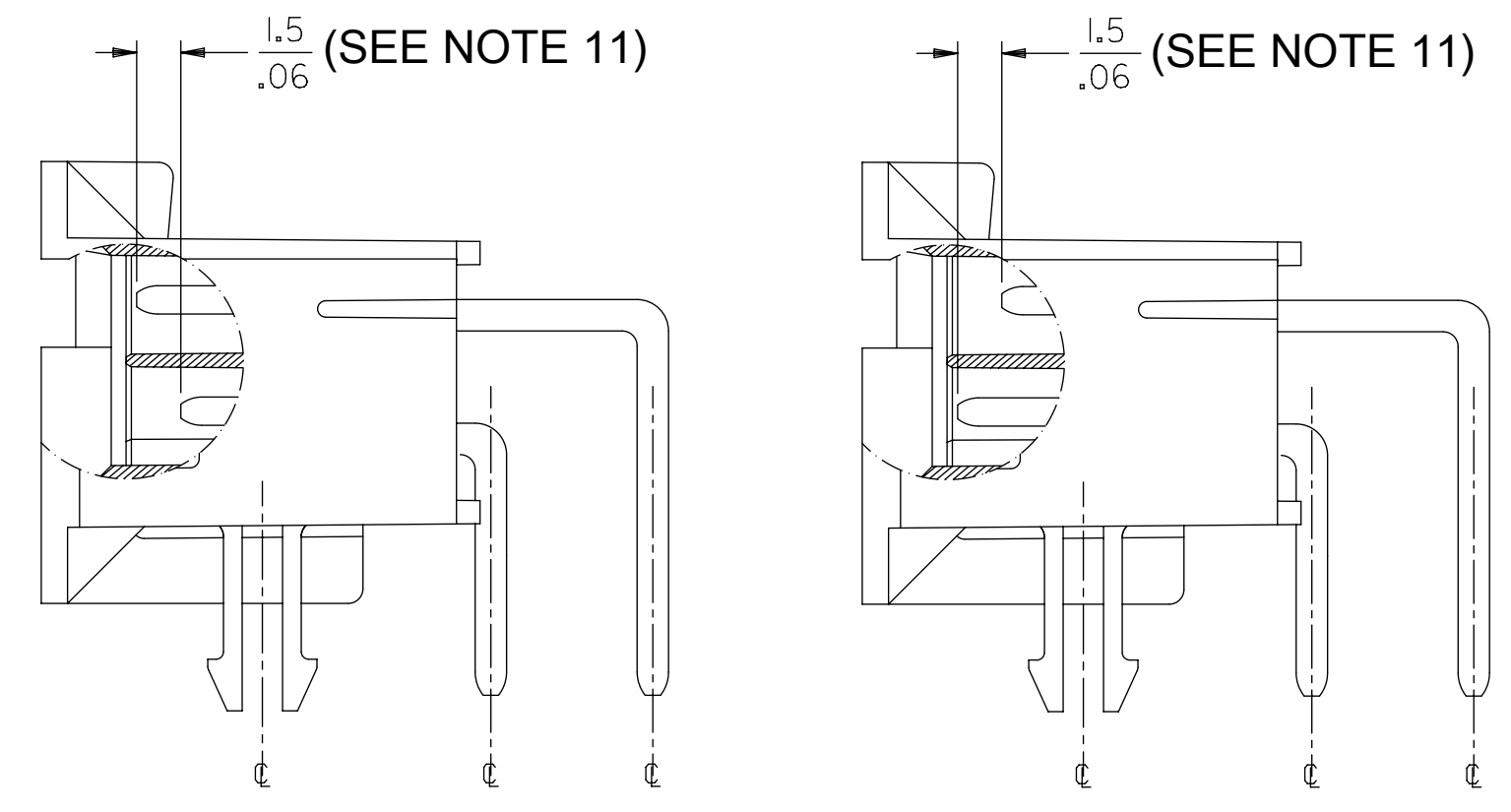
PART NUMBER	CIRCUIT SIZE	CLIP OPTION	DIMENSIONS (mm)							PCB THICKNESS (REF.)	TERMINAL PIN TYPE REQUIRED AT EACH CIRCUIT LOCATION																							
			DIM. 'A'	DIM. 'B'	DIM. 'C'	DIM. 'D'	DIM. 'E'	DIM. 'F'	1		2	3	4	5	6	7	8	9	10	11	12	13	14	15	16	17	18	19	20	21	22	23	24	
43810-1002	24	YES	60.81 2.394	46.20 1.819	58.60 2.307	1.90 .075	3.65 .144	3.1 .12	1.60 .063	D																								
43810-1006	24	YES	60.81 2.394	46.20 1.819	58.60 2.307	3.50 .138	5.25 .207	5.08 .200	3.18 .125	I	I	V	V	I	I	I	I	I	I	I	I	I	I	V	V	I	I	I	I	I	I	I		
43810-1008	10	YES	31.41 1.237	16.80 .661	29.20 1.150	2.71 .107	4.46 .176	3.1 .12	2.39 .094	A	B	A	A	A	A	B	A	A	A	-	-	-	-	-	-	-	-	-	-	-	-			
43810-1009	24	YES	60.81 2.394	46.20 1.819	58.60 2.307	2.71 .107	4.46 .176	3.6 .14	2.39 .094	L	L	L	L	L	L	L	L	L	L	L	L	L	L	L	L	L	L	L	L	L	L			
43810-1010	06	YES	23.01 .906	8.40 .331	20.80 .819	1.90 .075	3.65 .144	3.1 .12	1.60 .063	A	A	A	A	A	A	-	-	-	-	-	-	-	-	-	-	-	-	-	-	-				

TERMINAL PIN LEGEND			
PIN TYPE	FINISH (SEE NOTE 2)	MATING TYPE	DIM. 'F' (REF.)
A	I	STD.	3.1 .12
B	I	M-F-B-L	3.1 .12
C	2	STD.	3.1 .12
D	2	M-F-B-L	3.1 .12
E	I	STD.	3.94 .155
F	I	M-F-B-L	3.94 .155
G	2	STD.	3.94 .155
H	2	M-F-B-L	3.94 .155
I	2	STD.	5.08 .200
J	2	M-F-B-L	5.08 .200
K	I	STD.	3.6 .14
L	I	M-F-B-L	3.6 .14

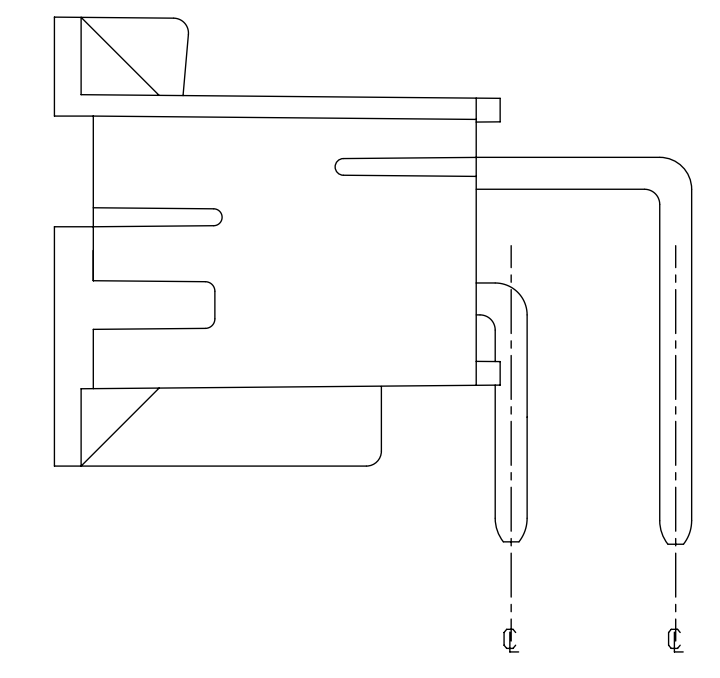
SEE SHEET 1 IEC NO: UCP2014-2528 DRAWN BY: UJ CHKD: BEL APPR: FSMTH DATE: 2013/12/12 DATE: 2013/12/19	QUALITY SYMBOLS ▽=0 ▽=0 ▽=0	GENERAL TOLERANCES (UNLESS SPECIFIED) mm INCH 4 PLACES ±.005 ±.005 3 PLACES ±.010 ±.010 2 PLACES ±0.25 ±.015 1 PLACE ±0.38 ±.030 0 PLACE ± ±		DIMENSION STYLE MM/IN	SCALE 1:1	DESIGN UNITS METRIC	THIRD ANGLE PROJECTION	
		MATERIAL NO. DATE SEE CHART 2012/01/19		DRAWN BY DATE WANG 1/5/2002		CHECKED BY DATE BANDURA 1/5/2002		TITLE MINI-FIT JR BMI RIGHT ANGLE HEADER ASSY. SELECT. LOADED, M-F/B-L
		DRAFT WHERE APPLICABLE MUST REMAIN WITHIN DIMENSIONS		DOCUMENT NO. SD-43810-080		SHEET NO. 2 OF 2		molex



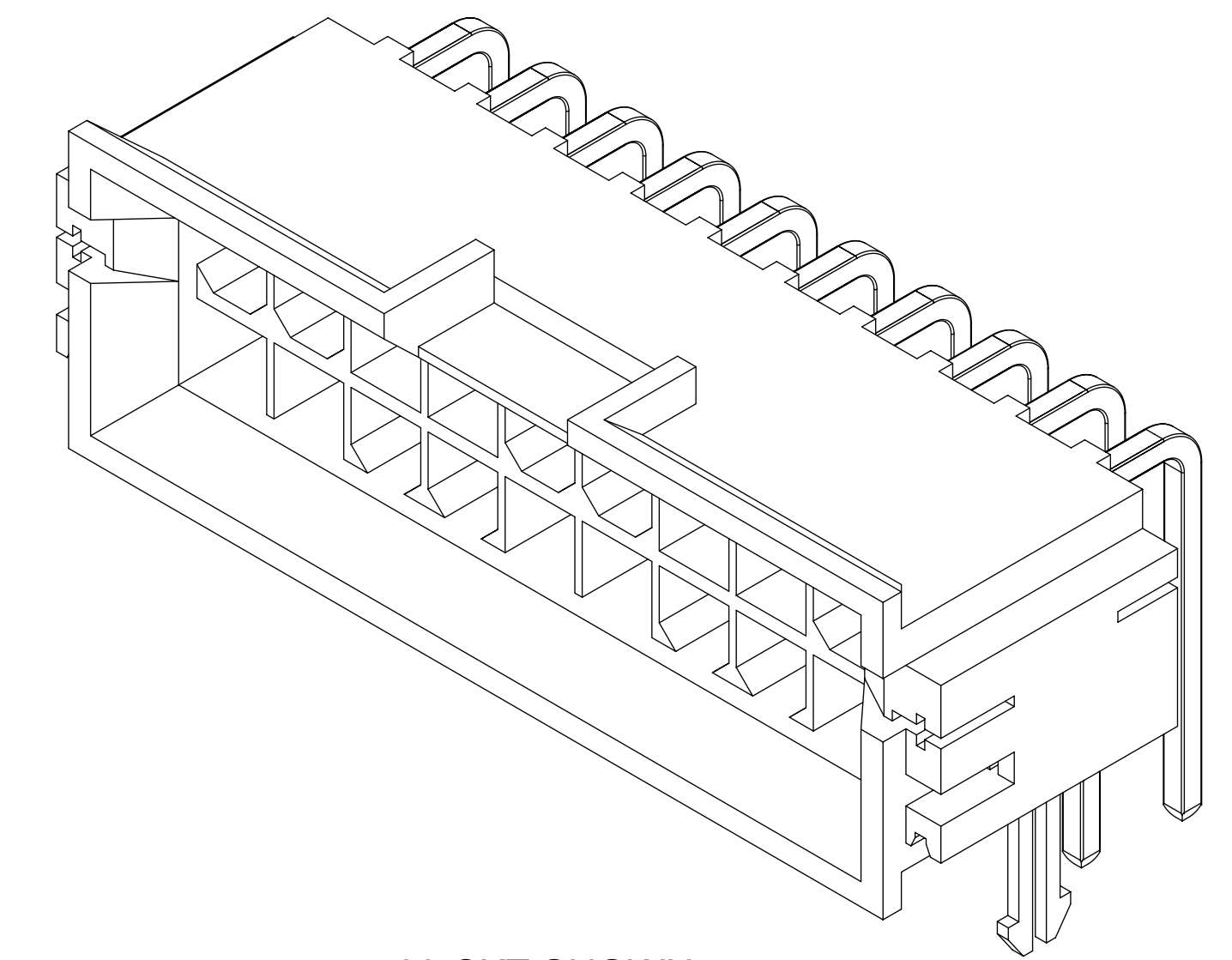
PCB LAYOUT: COMPONENT SIDE
SEE CHART ON SHEET 2 FOR RECOMMENDED NOMINAL PCB THICKNESS



DETAIL A



HEADER ASSEMBLY WITH NO CLIP OPTION



20 CKT SHOWN

- NOTES
- MATERIALS
HOUSING: NYLON 4/6 UL 94V-0 GLASS FILLED, COLOR: BLACK
TERMINAL: BRASS
BOARD RETENTION CLIP: BRASS
 - FINISHES:
TERMINAL:
1.=(0.00254)/.000100 MIN. MATTE TIN OVER (0.00127)/.000050 MIN. NICKEL
2.=(0.00076)/.000030 MIN. SELECT GOLD AND (0.00254)/.000100 MIN. SELECT MATTE TIN OVER (0.00127)/.000050 MIN. NICKEL OVERALL
MOUNTING CLIP:
(0.00254)/.000100 MIN. MATTE TIN OVER (0.00127)/.000050 MIN. NICKEL
 - PRODUCT SPECIFICATION: PS-43810-001
 - PACKAGING SPECIFICATION: PK-43810-001
 - PARTS MATES WITH MOLEX RECPTACLE #5557, #42474, AND #44516 AND HEADER #42385
 - PART ALLOWS FOR (1.27)/.050 MAX MIS-ALIGNMENT WITH MATING HOUSINGS IN ANY DIRECTION
 - CONNECTOR ASSEMBLIES ARE NOT TO BE MATED AND UNMATED WHILE CIRCUITS ARE LIVE
 - PARTS ARE NOT DESIGNED FOR CURRENT SHARING
 - DISCOLORATION IN THE BANDOLIER CARRIER AREA OF THE PIN IS INHERENT TO THE PLATING PROCESS AND IS DUE TO THE MASKING EFFECT OF THE CARRIER. THIS DISCOLORATION IS IN A NON-FUNCTIONAL AREA OF THE PIN AND WILL NOT AFFECT THE PERFORMANCE OF THE HEADER ASSEMBLY.
 - PART CONFORMS TO CLASS "B" REQUIREMENTS OF COSMETIC SPECIFICATION PS-45499-002
 - CIRCUITS SHOWN PROVIDE MATE-FIRST/BREAK-LAST FEATURE, SEE CHART ON SHEET 2 FOR FOR CIRCUIT LOCATIONS. FOR PRODUCT NOT REQUIRING MATE-FIRST/BREAK-LAST OPTIONS, SEE DRAWINGS SD-43810-011, -031, -051 AND -071.
 - CLIPS WILL APPEAR DIFFERENTLY ON ACTUAL PARTS DEPENDING ON PCB THICKNESS.
 - FORMING MARKS ARE ACCEPTABLE.
 - DIMENSION DOES NOT APPLY TO PARTS WITHOUT CLIP OPTION.
 - TEXT ON PART IS FOR REFERENCE ONLY. TEXT AND TEXT LOCATION MAY VARY DEPENDING ON PART NUMBER AND/OR TOOL.

THIS DRAWING CONTAINS INFORMATION THAT IS PROPRIETARY TO MOLEX ELECTRONIC TECHNOLOGIES, LLC AND SHOULD NOT BE USED WITHOUT WRITTEN PERMISSION											
SYMBOLS		DIMENSION UNITS		SCALE		CURRENT REV DESC: ADD P/N 43810-1011					
▽ = 0		MM/IN		4:1		molex MINI-FIT JR BMI RIGHT ANGLE HEADER ASSY. SELECT. LOADED, M-F/B-L PRODUCT CUSTOMER DRAWING DOCUMENT NUMBER: SD-43810-080 DOC TYPE: PSD DOC PART: 000 REVISION: E6 MATERIAL NUMBER: SEE CHART CUSTOMER: GENERAL MARKET SHEET NUMBER: 1 OF 2					
▽ = 0		GENERAL TOLERANCES (UNLESS SPECIFIED)									
▽ = 0		MM		INCH							
▽ = 0		4 PLACES ±		±							
▽ = 0		3 PLACES ±		± 0.01							
▽ = 0		2 PLACES ±		0.25 ± 0.015							
▽ = 0		1 PLACE ±		0.38 ±							
▽ = 0		0 PLACES ±		±							
▽ = 0		ANGULAR TOL ±		0.5°							
▽ = 0		DRAFT WHERE APPLICABLE MUST REMAIN WITHIN DIMENSIONS		THIRD ANGLE PROJECTION		DRAWING: D-SIZE		SERIES: 43810		2019/01/23	
▽ = 0						EC NO: 611087		DRWN: DSTEIER		2019/01/23	
▽ = 0						CHK'D: DSTEIER		APPR: FSMITH		2019/01/28	
▽ = 0						INITIAL REVISION:		DRWN: WANG		2002/1/5	
▽ = 0						APP: FSMITH		APPR: FSMITH		2012/01/19	

PART NUMBER	CIRCUIT SIZE	CLIP OPTION	DIM. "A"	DIM. "B"	DIM. "C"	DIM. "D"	DIM. "E"	DIM. "F"	PCB THICKNESS (REF.)	TERMINAL PIN TYPE REQUIRED AT EACH CIRCUIT LOCATION								V = VOIDED CIRCUIT													
										1	2	3	4	5	6	7	8	9	10	11	12	13	14	15	16	17	18	19	20	21	22
43810-1002	24	YES	60.81 2.394	46.20 1.819	58.60 2.307	1.90 .075	3.65 .144	3.1 .12	1.60 .063	D	D	D	D	D	D	D	D	D	D	D	D	D	D	D	D	D	D	D	D	C	C
43810-1006	24	YES	60.81 2.394	46.20 1.819	58.60 2.307	3.50 .138	5.25 .207	5.08 .200	3.18 .125	I	I	V	V	I	I	I	I	I	I	I	I	I	V	V	I	I	I	I	I	I	I
43810-1008	10	YES	31.41 1.237	16.80 .661	29.20 1.150	2.71 .107	4.46 .176	3.1 .12	2.39 .094	A	B	A	A	A	A	B	A	A	A	-	-	-	-	-	-	-	-	-	-	-	
43810-1009	24	YES	60.81 2.394	46.20 1.819	58.60 2.307	2.71 .107	4.46 .176	3.6 .14	2.39 .094	L	L	L	L	L	L	L	L	L	L	L	L	L	L	L	L	L	L	L	L	L	
43810-1010	06	YES	23.01 .906	8.40 .331	20.80 .819	1.90 .075	3.65 .144	3.1 .12	1.60 .063	A	A	A	A	A	A	-	-	-	-	-	-	-	-	-	-	-	-	-	-	-	
43810-1011	10	YES	31.41 1.237	16.80 .661	29.20 1.150	3.50 .138	5.25 .207	5.08 .200	3.81 .125	I	I	I	J	I	I	J	I	I	I	-	-	-	-	-	-	-	-	-	-	-	

TERMINAL PIN LEGEND			
PIN TYPE	FINISH (SEE NOTE 2)	MATING TYPE	DIM. "F" (REF.)
A	I	STD.	3.1 .12
B	I	M-F-B-L	3.1 .12
C	2	STD.	3.1 .12
D	2	M-F-B-L	3.1 .12
E	I	STD.	3.94 .155
F	I	M-F-B-L	3.94 .155
G	2	STD.	3.94 .155
H	2	M-F-B-L	3.94 .155
I	2	STD.	5.08 .200
J	2	M-F-B-L	5.08 .200
K	I	STD.	3.6 .14
L	I	M-F-B-L	3.6 .14

SYMBOLS	THIS DRAWING CONTAINS INFORMATION THAT IS PROPRIETARY TO MOLEX ELECTRONIC TECHNOLOGIES, LLC AND SHOULD NOT BE USED WITHOUT WRITTEN PERMISSION		
	DIMENSION UNITS	SCALE	CURRENT REV DESC: ADD P/N 43810-1011
= 0	MM/IN	1:1	molex MINI-FIT JR BMI RIGHT ANGLE HEADER ASSY. SELECT. LOADED, M-F/B-L
= 0	GENERAL TOLERANCES (UNLESS SPECIFIED)		
= 0		MM	INCH
= 0	4 PLACES ±	±	EC NO: 611087
= 0	3 PLACES ±	± 0.01	DRWN: DSTEIER 2019/01/23
= 0	2 PLACES ±	± 0.25 ± 0.015	CHK'D: DSTEIER 2019/01/28
= 0	1 PLACE ±	± 0.38 ±	APPR: FSMITH 2019/01/28
= 0	0 PLACES ±	±	INITIAL REVISION:
= 0	ANGULAR TOL ± 0.5 °		DRWN: WANG 2002/1/5
= 0	DRAFT WHERE APPLICABLE MUST REMAIN WITHIN DIMENSIONS	THIRD ANGLE PROJECTION	APPR: FSMITH 2012/01/19
= 0			DOCUMENT NUMBER: SD-43810-080 DOC TYPE: PSD DOC PART: 000 REVISION: E6
D-DRAWING		SERIES	MATERIAL NUMBER
D-SIZE		43810	CUSTOMER
		SEE CHART	GENERAL MARKET
			SHEET NUMBER
			2 OF 2