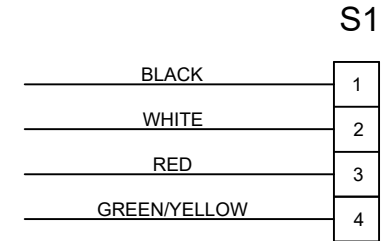
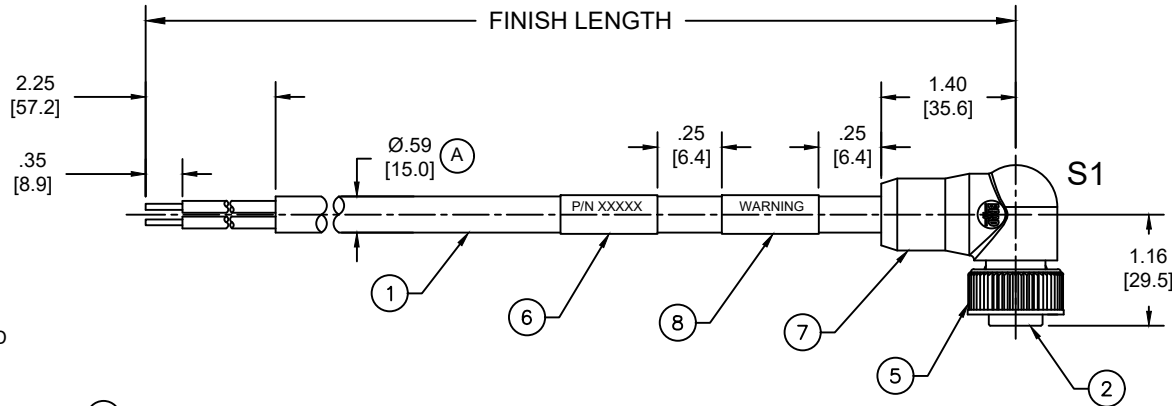
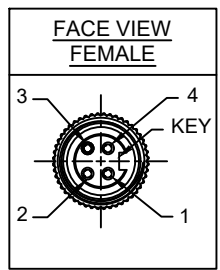


| MATERIAL NUMBER | ENGINEERING NUMBER | FINISHED LENGTH |
|-----------------|--------------------|------------------|
| 1300610110 | 104001A46F200 | 20FT [6.1M] |
| 1300610125 | 104001A46M100 | 10M [32FT 10 IN] |
| 1300610128 | 104001A46M270 | 27M [88FT 7 IN] |

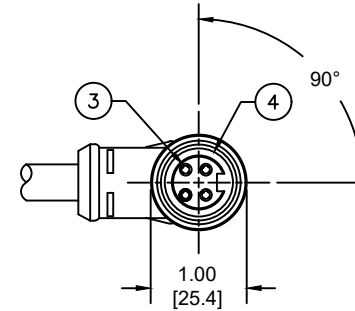
(A) PART NUMBER LEGEND

104001A46F200

LENGTH:
 F100= 10 FEET
 F200= 20 FEET
 M005= 0.5 METER
 M010= 1 METER
 M100= 10 METER



- NOTES:**
- MATERIAL: AS NOTED
 - FINISH: AS NOTED
 - ELECTRICAL:
 - VOLTAGE: 483V PER IEC60664 (A)
 - 600V PER UL2237
 - CURRENT: 15A
 - TEMP RATING: -20°TO +105°C (A)
 - PROTECTION: IP67 (WHEN MATED)
 - COUPLING THREAD: 7/8"-16UN
 - UL LISTED FILE: E258922
 - ALL DIMENSIONS ARE FOR REFERENCE UNLESS TOLERANCED OR NOTED OTHERWISE



(A) CABLE LENGTH TOLERANCES

| | |
|--------------------------|-------------------------|
| <.3M [1FT]: | +19mm-0 [+ .75in-0] |
| .3 - .9M [1 - 3FT]: | +44.5mm-0 [+1.75in-0] |
| .9 - 1.8M [3 - 6FT]: | +55.6mm-0 [+2.19in-0] |
| 1.8 - 3.7M [6 - 12FT]: | +88.9mm-0 [+3.50in-0] |
| 3.7 - 7.3M [12 - 24FT]: | +165.1mm-0 [+6.50in-0] |
| 7.3-14.6M [24 - 48FT]: | +317.5mm-0 [+12.50in-0] |
| 14.6 - 30.5M [48-100FT]: | +622.3mm-0 [+24.50in-0] |
| OVER 30M [100FT] | +2% OF FINISHED LENGTH |

| ITEM | DESCRIPTION | MATERIAL | FINISH |
|------|----------------|------------|------------------|
| 8 | WARNING LABEL | VINYL | BLACK |
| 7 | OVERMOLD | TPE | GRAY |
| 6 | WRAP LABEL | VINYL | YELLOW |
| 5 | COUPLING NUT | ZINC ALLOY | BLACK E-COAT |
| 4 | FRICTION RING | NYLON | WHITE |
| 3 | SOCKET CONTACT | BRASS | GOLD OVER NICKEL |
| 2 | INSERT | TPE | BLACK |
| 1 | #14/4 CABLE | PVC JACKET | GRAY |

| FUNCTIONAL SYMBOLS | | DIMENSION UNITS | | SCALE | CURRENT REV DESC: ITEM 2 & 7 WERE PVC. SOCKET & SLEEVE SHOWN AS ITEM-3. ADDED IEC VOLTAGE, PN LEGEND, CABLE DIA & TOL CHART. MODIFIED TEMP RATING AND PN TABLE. REMOVED CSA IN NOTES | |
|--------------------|---------|---------------------------------------|-----|-------|--|----------------|
| $F_A=0$ | $F_C=0$ | INCH/MM | NTS | | EC NO: 698916 | |
| $F_E=0$ | $F_F=0$ | GENERAL TOLERANCES (UNLESS SPECIFIED) | | | DRWN: ABENJAMINLW | 2021/06/14 |
| | | | | | CHK'D: RSTONE | 2022/03/09 |
| | | | | | APPR: BWOODMAN | 2022/03/11 |
| | | | | | INITIAL REVISION: | |
| | | | | | DRWN: VOU | 2010/01/14 |
| | | | | | APPR: JFMURPHY | 2010/01/20 |
| | | | | | THIRD ANGLE PROJECTION | |
| | | | | | DRAWING | SERIES |
| | | | | | A-SIZE | 130061 |
| | | | | | MATERIAL NUMBER | CUSTOMER |
| | | | | | SEE CHART | GENERAL MARKET |
| | | | | | SHEET NUMBER | |
| | | | | | 1 OF 1 | |

molex

BRAD POWER CORDSET, A-SIZE
 4-POLE, FEMALE 90DEG, SINGLE KEY,
 #14 AWG

PRODUCT CUSTOMER DRAWING

| DOCUMENT NUMBER | DOC TYPE | DOC PART | REVISION |
|-----------------|----------|----------|----------|
| SD-130061-014 | PSD | 001 | A |

| DOCUMENT STATUS | P1 | RELEASE DATE | 2022/03/11 | 14:29:46 |
|-----------------|----|--------------|------------|----------|
|-----------------|----|--------------|------------|----------|