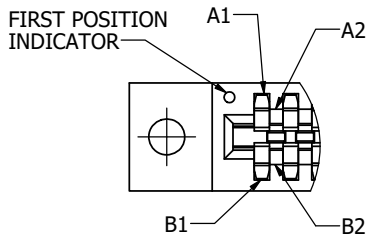
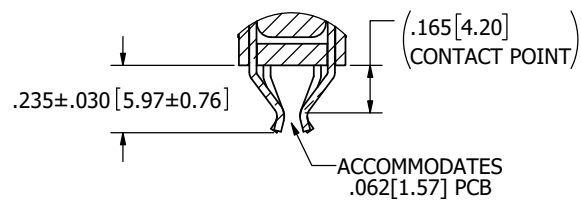


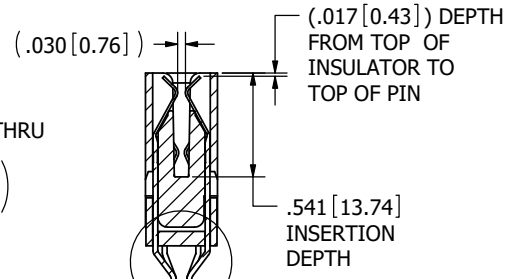
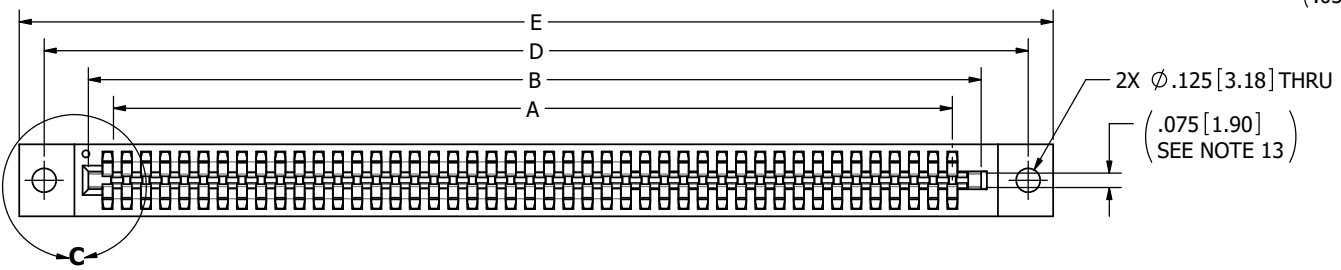
REVISIONS				
REV.	ECO. NO	DESCRIPTION	DATE	BY
E	2475	ADDED POSITION # TO 120, DIM A+.050 TO PCB LAYOUT, UPDATED DIM A (WAS A1 & A2), NOTES FOR INSPECTION, CONTACT GAP .030±.010, INSERTION FORCE 8 OZ MAX, CONTACT LOCATION NOTE (DETAIL C), PROCESSING TIME 20 SEC FOR 'G' & 'J' MTL	10/20/2011	JH
F	2851	REMOVE 'D', 'V', 'Z', 'T' MOUNTING OPTIONS	4/3/2014	JHSU
H	4491	ADD 'F' MTL & 'M' PLATING, UPDATE NOTE 7, NOTE 8 & DAUGHTER/PCB CARD LAYOUT, REMOVE 'Y' PLATING, ADD REF TO CONTACT GAP DIM & CARD EXTENDER CONTACT POINT DISTANCE DIM	8/5/2022	JH



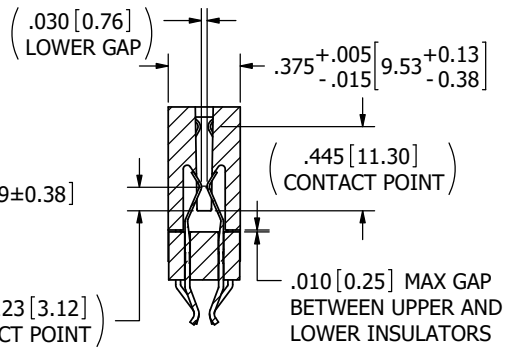
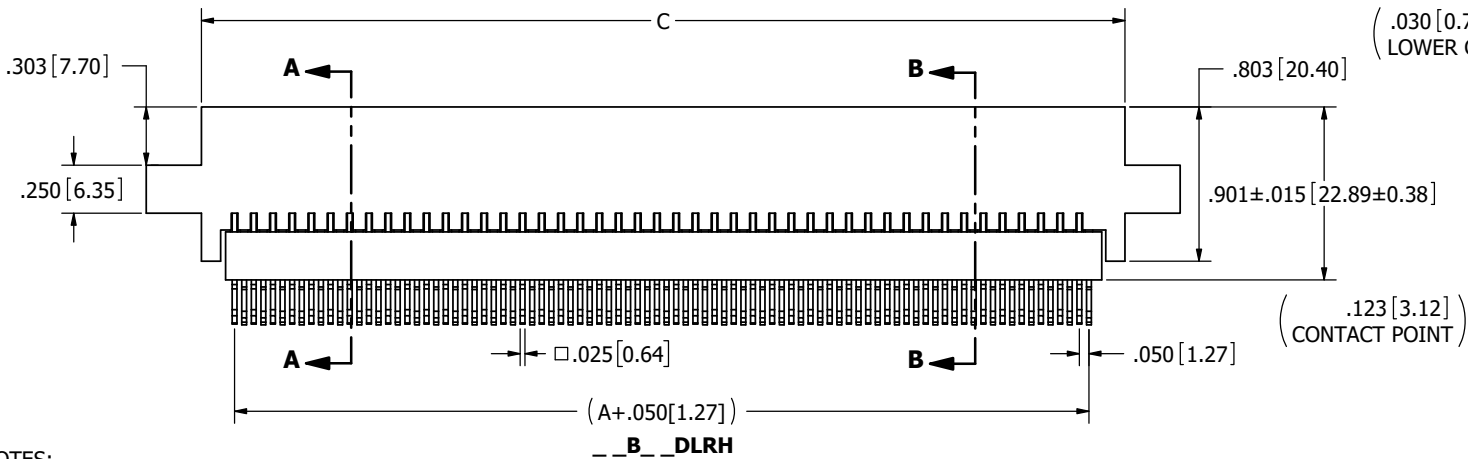
**DETAIL C  
SCALE 3 : 1**



**DETAIL D  
SCALE 3 : 1**



**SECTION A-A**



**SECTION B-B**

- NOTES:**
- INSULATOR MATERIAL: SEE PART NUMBER CODING.
  - CONTACT MATERIAL: SEE PART NUMBER CODING.
  - PLATING: SEE PART NUMBER CODING.
  - OPERATING TEMPERATURE: SEE PART NUMBER CODING.
  - PROCESSING TEMP: SEE PART NUMBER CODING.
  - UL FLAMMABILITY RATING: 94V-0.
  - OPERATING VOLTAGE: 225 VAC
  - CURRENT RATING: 3 AMP
  - CONTACT RESISTANCE: 30 MILLI OHMS MAX.
  - INSULATION RESISTANCE: 5000 MEGA OHMS.
  - DURABILITY: 500 CYCLES MIN.
  - CONNECTOR IDENTIFICATION: THE PART SHALL BE MARKED WITH A PART NUMBER AND LOT CODE.
  - BOARD THICKNESS ACCOMMODATED: .062±.008 [1.57±0.20].
  - INSERTION FORCE: 8 OZ MAX PER CONTACT PAIR WHEN USING A .062 [1.57] TEST BLADE.
  - WITHDRAWAL FORCE: 1 OZ MIN PER CONTACT PAIR USING .062 [1.57] PCB.



RoHS COMPLIANT

UNLESS OTHERWISE SPECIFIED: DIMENSIONS ARE IN INCHES (MM)		DRAWN	DATE	NAME		
TOLERANCES: ANGULAR: ± 1° DECIMALS .XX = ± .02 [5] .XXX = ± .005 [13] XXXX = ± .0005 [013]		12/4/2008	MNH			
<small>THE INFORMATION HEREIN CONTAINS PROPRIETARY INFORMATION OF SULLINS ELECTRONICS AND IS NOT TO BE REPRODUCED, USED OR DISCLOSED TO OTHERS FOR ANY PURPOSE EXCEPT AS SPECIFICALLY AUTHORIZED IN WRITING BY AN OFFICER OF SULLINS ELECTRONICS.</small>					TITLE <b>BI-LEVEL, .050 CC</b>	
PART NUMBER					B_DLR	
SIZE	CAGE CODE	DWG. NO.	REV			
C	54453	C10790	H			
SCALE: 2:1		SHEET 1 OF 4				

**CUSTOMER COPY**

# PART NUMBER CODING

## MATERIALS (INSULATOR / CONTACT)

**G = BLACK PA9T / PHOSPHOR BRONZE**  
 OPERATING TEMP: -65°C TO +125°C  
 PROCESSING TEMP: 260°C MAX FOR 20 SECS

**J = BLACK PA9T / BERYLLIUM COPPER**  
 OPERATING TEMP: -65°C TO +150°C  
 PROCESSING TEMP: 260°C MAX FOR 20 SECS

**F = BROWN PPS / SPINODAL (CONSULT FACTORY)**  
 OPERATING TEMP: -65°C TO +200°C  
 PROCESSING TEMP: 260°C MAX FOR 20 SECS  
 CONSULT FACTORY FOR SPECIAL SOLDERING GUIDELINES  
 AVAILABLE IN OVERALL GOLD ONLY (M PLATING)

(CONSULT FACTORY FOR OTHER MATERIALS)

## MOUNTING STYLE

H =  $\phi$ .125[3.18] MOUNTING HOLES (PAGE 1)  
 S =  $\phi$ .125[3.18] SIDE MOUNTING HOLES (PAGE 2)  
 I = #4-40 THREADED INSERTS (PAGE 2)  
 A = #4-40 THREADED INSERTS IN SIDE HOLES (PAGE 2)  
 N = NO MOUNTING EARS (PAGE 2)

**NUMBER OF POSITIONS**  
 (CONTACT PER ROW)

## PLATING

ALL PLATINGS ARE LEAD FREE AND HAVE .000050" NICKEL UNDERPLATE

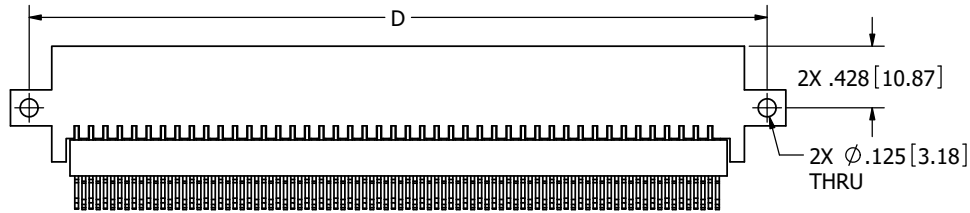
## CONTACT SURFACE

B = .000010" GOLD  
 C = .000030" GOLD  
 M = .000030" GOLD

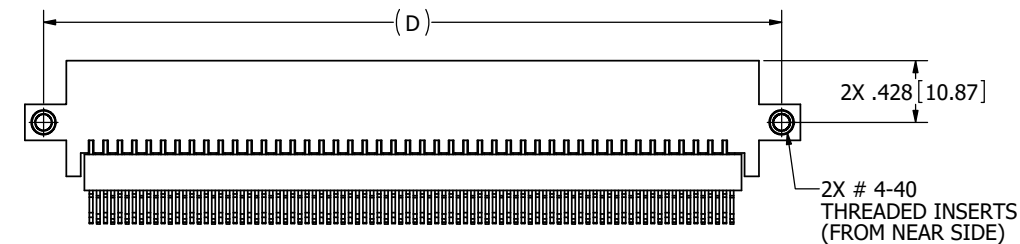
## TERMINATION

.000100" PURE TIN, MATTE  
 .000100" PURE TIN, MATTE  
 .000010" GOLD OVERALL

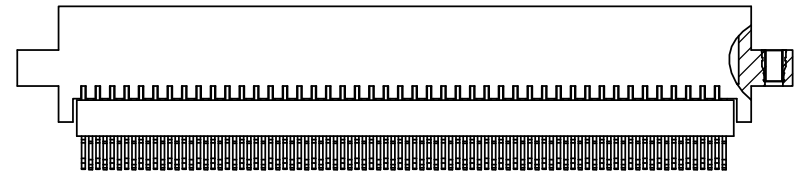
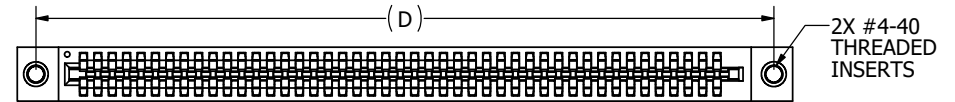
(M PLATING AVAILABLE IN 'F' MATERIAL ONLY)



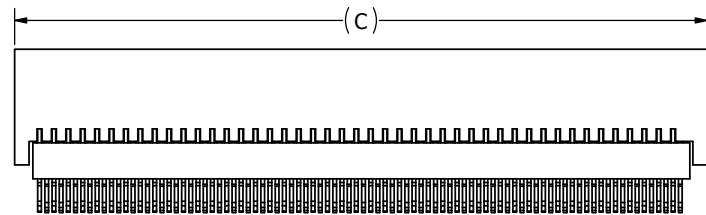
**\_\_ B \_\_ DLRS**



**\_\_ B \_\_ DLRA**



**\_\_ B \_\_ DLRI**



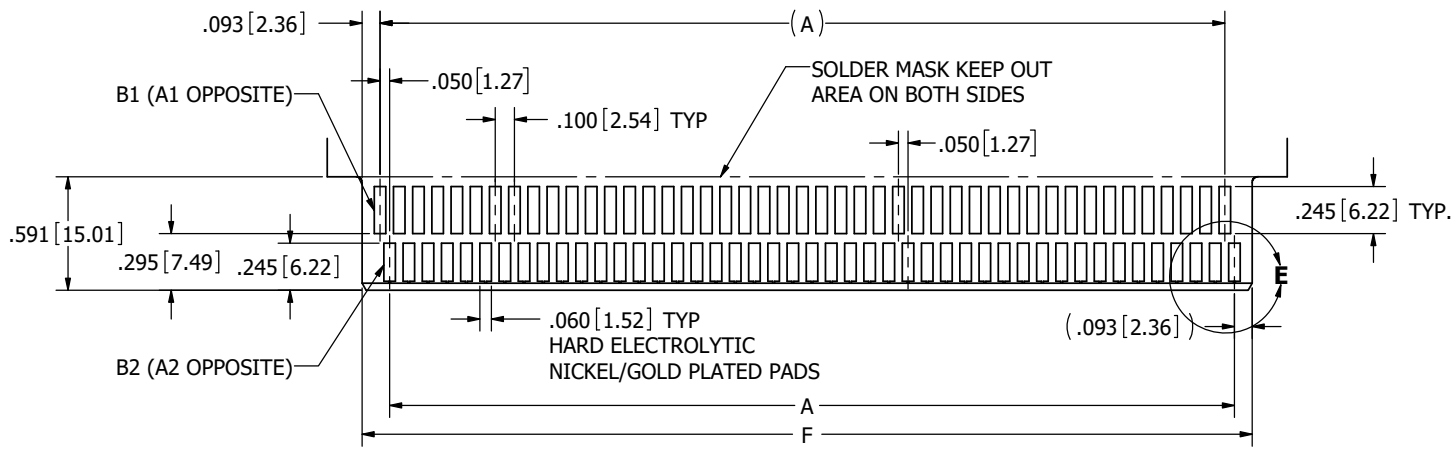
**\_\_ B \_\_ DLRN**

# CUSTOMER COPY

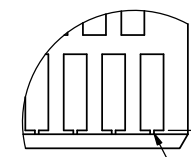
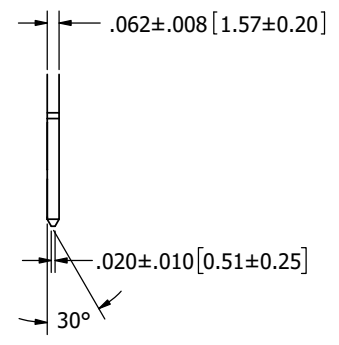


RoHS COMPLIANT

UNLESS OTHERWISE SPECIFIED, DIMENSIONS ARE IN INCHES (MM)		DRAWN	DATE	NAME	
			12/4/2008	MNH	
TOLERANCES:					THE INFORMATION HEREIN CONTAINS PROPRIETARY INFORMATION OF SULLINS ELECTRONICS AND IS NOT TO BE REPRODUCED, USED OR DISCLOSED TO OTHERS FOR ANY PURPOSE EXCEPT AS SPECIFICALLY AUTHORIZED IN WRITING BY AN OFFICER OF SULLINS ELECTRONICS.
ANGULAR: $\pm 1^\circ$					
DECIMALS					
.XX = $\pm .02$ [.5] .XXX = $\pm .005$ [.13] .XXXX = $\pm .0005$ [.013]					
TITLE		PART NUMBER			BI-LEVEL, .050 CC __ B __ DLR __
SIZE	CAGE CODE	DWG. NO.	REV		
C	54453	C10790	H		
SCALE: 3:2		SHEET 2 OF 4			



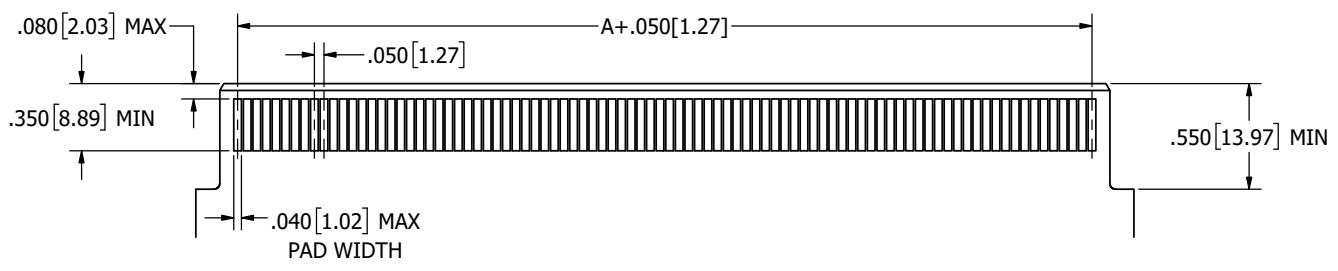
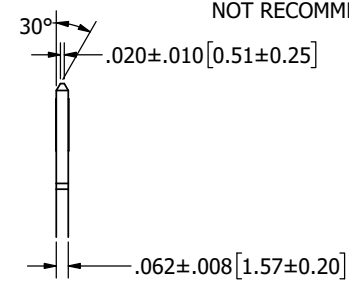
DAUGHTER CARD LAYOUT RECOMMENDED



DETAIL E  
SCALE 4 : 1

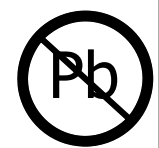
(.010 [0.25])  
DO NOT CHAMFER  
THROUGH PLATED PADS

TIE BAR  
NOT RECOMMENDED



PC BOARD LAYOUT, SOLDER END

CUSTOMER COPY



RoHS COMPLIANT

UNLESS OTHERWISE SPECIFIED:  
DIMENSIONS ARE IN INCHES [MM]

TOLERANCES:  
ANGULAR: ± 1°

DECIMALS  
.XX = ± .02 [5]  
.XXX = ± .005 [13]  
.XXXX = ± .0005 [13]

DRAWN	DATE	NAME
	12/4/2008	MNH

THE INFORMATION HEREIN CONTAINS PROPRIETARY INFORMATION OF SULLINS ELECTRONICS AND IS NOT TO BE REPRODUCED, USED OR DISCLOSED TO OTHERS FOR ANY PURPOSE EXCEPT AS SPECIFICALLY AUTHORIZED IN WRITING BY AN OFFICER OF SULLINS ELECTRONICS.

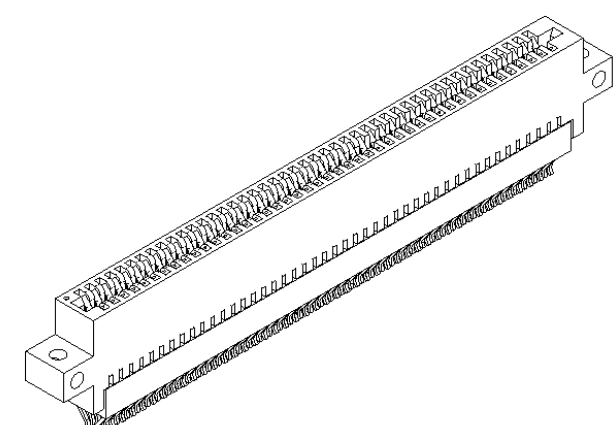


TITLE BI-LEVEL, .050 CC			
PART NUMBER _ B _ DLR _			
SIZE C	CAGE CODE 54453	DWG. NO. C10790	REV H
SCALE: 2:1		SHEET 3 OF 4	

PART NUMBER	POSITIONS/ CONTACTS/	INCHES						POSITIONS/ CONTACTS/	MILLIMETERS					
		A±.005	B±.005	C±.015	D±.010	E±.020	F		A±0.13	B±0.13	C±0.38	D±0.25	E±0.51	F
B06DLR	6/12	0.200	0.450	0.610	0.925	1.185	0.436	6/12	5.08	11.43	15.49	23.50	30.10	11.07
B08DLR	8/16	0.300	0.550	0.710	1.025	1.285	0.536	8/16	7.62	13.97	18.03	26.04	32.64	13.61
B10DLR	10/20	0.400	0.650	0.810	1.125	1.385	0.636	10/20	10.16	16.51	20.57	28.58	35.18	16.15
B12DLR	12/24	0.500	0.750	0.910	1.225	1.485	0.736	12/24	12.70	19.05	23.11	31.12	37.72	18.69
B14DLR	14/28	0.600	0.850	1.010	1.325	1.585	0.836	14/28	15.24	21.59	25.65	33.66	40.26	21.23
B16DLR	16/32	0.700	0.950	1.110	1.425	1.685	0.936	16/32	17.78	24.13	28.19	36.20	42.80	23.77
B18DLR	18/36	0.800	1.050	1.210	1.525	1.785	1.036	18/36	20.32	26.67	30.73	38.74	45.34	26.31
B20DLR	20/40	0.900	1.150	1.310	1.625	1.885	1.136	20/40	22.86	29.21	33.27	41.28	47.88	28.85
B22DLR	22/44	1.000	1.250	1.410	1.725	1.985	1.236	22/44	25.40	31.75	35.81	43.82	50.42	31.39
B24DLR	24/48	1.100	1.350	1.510	1.825	2.085	1.336	24/48	27.94	34.29	38.35	46.36	52.96	33.93
B26DLR	26/52	1.200	1.450	1.610	1.925	2.185	1.436	26/52	30.48	36.83	40.89	48.90	55.50	36.47
B28DLR	28/56	1.300	1.550	1.710	2.025	2.285	1.536	28/56	33.02	39.37	43.43	51.44	58.04	39.01
B30DLR	30/60	1.400	1.650	1.810	2.125	2.385	1.636	30/60	35.56	41.91	45.97	53.98	60.58	41.55
B32DLR	32/64	1.500	1.750	1.910	2.225	2.485	1.736	32/64	38.10	44.45	48.51	56.52	63.12	44.09
B34DLR	34/68	1.600	1.850	2.010	2.325	2.585	1.836	34/68	40.64	46.99	51.05	59.06	65.66	46.63
B36DLR	36/72	1.700	1.950	2.110	2.425	2.685	1.936	36/72	43.18	49.53	53.59	61.60	68.20	49.17
B38DLR	38/76	1.800	2.050	2.210	2.525	2.785	2.036	38/76	45.72	52.07	56.13	64.14	70.74	51.71
B40DLR	40/80	1.900	2.150	2.310	2.625	2.885	2.136	40/80	48.26	54.61	58.67	66.68	73.28	54.25
B42DLR	42/84	2.000	2.250	2.410	2.725	2.985	2.236	42/84	50.80	57.15	61.21	69.22	75.82	56.79
B44DLR	44/88	2.100	2.350	2.510	2.825	3.085	2.336	44/88	53.34	59.69	63.75	71.76	78.36	59.33
B46DLR	46/92	2.200	2.450	2.610	2.925	3.185	2.436	46/92	55.88	62.23	66.29	74.30	80.90	61.87
B48DLR	48/96	2.300	2.550	2.710	3.025	3.285	2.536	48/96	58.42	64.77	68.83	76.84	83.44	64.41
B50DLR	50/100	2.400	2.650	2.810	3.125	3.385	2.636	50/100	60.96	67.31	71.37	79.38	85.98	66.95
B52DLR	52/104	2.500	2.750	2.910	3.225	3.485	2.736	52/104	63.50	69.85	73.91	81.92	88.52	69.49
B54DLR	54/108	2.600	2.850	3.010	3.325	3.585	2.836	54/108	66.04	72.39	76.45	84.46	91.06	72.03
B56DLR	56/112	2.700	2.950	3.110	3.425	3.685	2.936	56/112	68.58	74.93	78.99	87.00	93.60	74.57
B58DLR	58/116	2.800	3.050	3.210	3.525	3.785	3.036	58/116	71.12	77.47	81.53	89.54	96.14	77.11
B60DLR	60/120	2.900	3.150	3.310	3.625	3.885	3.136	60/120	73.66	80.01	84.07	92.08	98.68	79.65
B62DLR	62/124	3.000	3.250	3.410	3.725	3.985	3.236	62/124	76.20	82.55	86.61	94.62	101.22	82.19
B64DLR	64/128	3.100	3.350	3.510	3.825	4.085	3.336	64/128	78.74	85.09	89.15	97.16	103.76	84.73
B66DLR	66/132	3.200	3.450	3.610	3.925	4.185	3.436	66/132	81.28	87.63	91.69	99.70	106.30	87.27
B68DLR	68/136	3.300	3.550	3.710	4.025	4.285	3.536	68/136	83.82	90.17	94.23	102.24	108.84	89.81
B70DLR	70/140	3.400	3.650	3.810	4.125	4.385	3.636	70/140	86.36	92.71	96.77	104.78	111.38	92.35
B72DLR	72/144	3.500	3.750	3.910	4.225	4.485	3.736	72/144	88.90	95.25	99.31	107.32	113.92	94.89
B74DLR	74/148	3.600	3.850	4.010	4.325	4.585	3.836	74/148	91.44	97.79	101.85	109.86	116.46	97.43
B76DLR	76/152	3.700	3.950	4.110	4.425	4.685	3.936	76/152	93.98	100.33	104.39	112.40	119.00	99.97
B78DLR	78/156	3.800	4.050	4.210	4.525	4.785	4.036	78/156	96.52	102.87	106.93	114.94	121.54	102.51
B80DLR	80/160	3.900	4.150	4.310	4.625	4.885	4.136	80/160	99.06	105.41	109.47	117.48	124.08	105.05
B82DLR	82/164	4.000	4.250	4.410	4.725	4.985	4.236	82/164	101.60	107.95	112.01	120.02	126.62	107.59
B84DLR	84/168	4.100	4.350	4.510	4.825	5.085	4.336	84/168	104.14	110.49	114.55	122.56	129.16	110.13
B86DLR	86/172	4.200	4.450	4.610	4.925	5.185	4.436	86/172	106.68	113.03	117.09	125.10	131.70	112.67
B88DLR	88/176	4.300	4.550	4.710	5.025	5.285	4.536	88/176	109.22	115.57	119.63	127.64	134.24	115.21
B90DLR	90/180	4.400	4.650	4.810	5.125	5.385	4.636	90/180	111.76	118.11	122.17	130.18	136.78	117.75
B92DLR	92/184	4.500	4.750	4.910	5.225	5.485	4.736	92/184	114.30	120.65	124.71	132.72	139.32	120.29
B94DLR	94/188	4.600	4.850	5.010	5.325	5.585	4.836	94/188	116.84	123.19	127.25	135.26	141.86	122.83
B96DLR	96/192	4.700	4.950	5.110	5.425	5.685	4.936	96/192	119.38	125.73	129.79	137.80	144.40	125.37
B98DLR	98/196	4.800	5.050	5.210	5.525	5.785	5.036	98/196	121.92	128.27	132.33	140.34	146.94	127.91
B100DLR	100/200	4.900	5.150	5.310	5.625	5.885	5.136	100/200	124.46	130.81	134.87	142.88	149.48	130.45
B102DLR	102/204	5.000	5.250	5.410	5.725	5.985	5.236	102/204	127.00	133.35	137.41	145.42	152.02	132.99
B104DLR	104/208	5.100	5.350	5.510	5.825	6.085	5.336	104/208	129.54	135.89	139.95	147.96	154.56	135.53
B106DLR	106/212	5.200	5.450	5.610	5.925	6.185	5.436	106/212	132.08	138.43	142.49	150.50	157.10	138.07
B108DLR	108/216	5.300	5.550	5.710	6.025	6.285	5.536	108/216	134.62	140.97	145.03	153.04	159.64	140.61
B110DLR	110/220	5.400	5.650	5.810			5.636	110/220	137.16	143.51	147.57			143.15
B112DLR	112/224	5.500	5.750	5.910			5.736	112/224	139.70	146.05	150.11			145.69
B114DLR	114/228	5.600	5.850	6.010			5.836	114/228	142.24	148.59	152.65			148.23
B116DLR	116/232	5.700	5.950	6.110			5.936	116/232	144.78	151.13	155.19			150.77
B118DLR	118/236	5.800	6.050	6.210			6.036	118/236	147.32	153.67	157.73			153.31
B120DLR	120/240	5.900	6.150	6.310			6.136	120/240	149.86	156.21	160.27			155.85

'N' MOUNTING ONLY

'N' MOUNTING ONLY



# CUSTOMER COPY



RoHS COMPLIANT

UNLESS OTHERWISE SPECIFIED: DIMENSIONS ARE IN INCHES (MM)		DRAWN	DATE	NAME	
TOLERANCES: ANGULAR: ± 1° DECIMALS XX= ± .02 [5] XXX= ± .005 [13] XXXX= ± .0005 [013]			12/4/2008	MNH	
<small>THE INFORMATION HEREIN CONTAINS PROPRIETARY INFORMATION OF SULLINS ELECTRONICS AND IS NOT TO BE REPRODUCED, USED OR DISCLOSED TO OTHERS FOR ANY PURPOSE EXCEPT AS SPECIFICALLY AUTHORIZED IN WRITING BY AN OFFICER OF SULLINS ELECTRONICS.</small>					TITLE
					BI-LEVEL, .050 CC
					PART NUMBER
					B DLR
SIZE	CAGE CODE	DWG. NO.	REV		
C	54453		H	C10790	
SCALE: 3:2					SHEET 4 OF 4