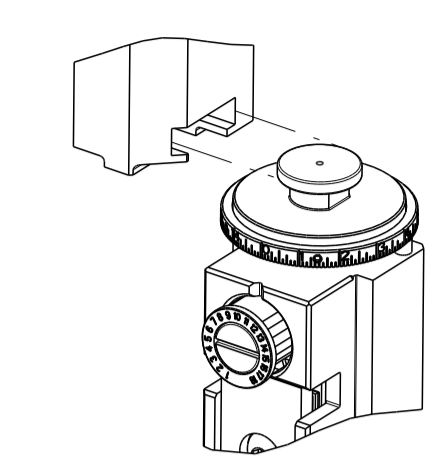


PART NUMBER	REVISION	DESCRIPTION	FEED TYPE
2151070-1	K	FINE CRIMP HEIGHT ADJUST	MECHANICAL
2151070-2	K	FINE CRIMP HEIGHT ADJUST	PNEUMATIC
7-2151070-1	K	MECHANICAL AND CRIMP TOOLING KIT	MECHANICAL
7-2151070-2	K	PNEUMATIC AND CRIMP TOOLING KIT	PNEUMATIC
7-2151070-7	A	CRIMP TOOLING KIT	-

ATLANTIC VERSION TERMINATOR INTERFACE ADAPTER



APPLICATOR DATA		
CRIMP	SIZE	TYPE
WIRE	3.30 mm [.130]	F
INSUL	4.57 mm [.180]	OV

APPLICATOR INSTRUCTIONS 408-35042

TERMINAL DATA: TE TERMINAL		TE CRIMP SPECIFICATION	
TERMINAL NAME: STANDARD POWER TIMER CONTACT			
WIRE STRIP LENGTH		INSULATION DIAMETER RANGE	
4.40-5.00 mm [.173-.197 IN]		Ø3.30-4.50 mm [.130-.177 IN]	
TERMINAL APPLICATION SPECIFICATION	(A)114-18037		
	(B)114-18388		
TERMINALS APPLIED			
	TE TERMINAL		TE TERMINAL
(A) 964328-1	(A) 964328-5	(B) 1241406-1	(B) 1241406-3
	TE TERMINAL		TE TERMINAL
(B) 1-2208461-3	(B) 1-2333551-3		

TERMINAL DATA: TE TERMINAL		TE CRIMP SPECIFICATION	
TERMINAL NAME: STANDARD POWER TIMER CONTACT			
WIRE STRIP LENGTH		INSULATION DIAMETER RANGE	
4.40-5.00 mm [.173-.197 IN]		Ø3.30-4.50 mm [.130-.177 IN]	
TERMINAL APPLICATION SPECIFICATION			
TERMINALS APPLIED			
	TE TERMINAL		TE TERMINAL
1241406-1	964328-1		

TERMINAL DATA: TE TERMINAL		TE CRIMP SPECIFICATION	
TERMINAL NAME: STANDARD POWER TIMER CONTACT			
WIRE STRIP LENGTH		INSULATION DIAMETER RANGE	
4.40-5.00 mm [.173-.197 IN]		Ø3.30-4.50 mm [.130-.177 IN]	
TERMINAL APPLICATION SPECIFICATION	(B) 114-18388		
TERMINALS APPLIED			
	TE TERMINAL		TE TERMINAL
(B) 1-2208461-3	(B) 1-2333551-3	(B) 1241406-1	(B) 1241406-3

WIRE SIZE	CRIMP HEIGHT mm [INCH]	CRIMP HEIGHT REFERENCE SETTING
4.00mm2	2.35+/-0.05 [.093+/- .002]	4.3
3.50mm2	2.24+/-0.05 [.088+/- .002]	5.9
3.00mm2	2.13+/-0.05 [.084+/- .002]	6.8

WIRE SIZE	CRIMP HEIGHT mm [INCH]	CRIMP HEIGHT REFERENCE SETTING
Ø 1.50mm2+2.50mm2	2.35+/-0.05 [.093+/- .002]	4.3

WIRE SIZE	CRIMP HEIGHT mm [INCH]	CRIMP HEIGHT REFERENCE SETTING
4.0mm2	2.22+/-0.05 [.087+/- .002]	4.3

- RECOMMENDED SPARE PARTS
- REFER TO SUPPLIED INSTRUCTION SHEET FOR CLEANING, LUBRICATION AND STORAGE OF APPLICATOR.
- APPLY PART NUMBER 2-23419-6 LOCTITE TO THREADS OF ITEM 242.
- CRIMP HEIGHT REFERENCE SETTING WAS THE SETTING USED WHEN THE APPLICATOR WAS QUALIFIED AT THE FACTORY. ADJUSTMENT MAY BE NECESSARY WHEN RUNNING APPLICATOR IN THE FIELD.
- TERMINAL LUBRICANT IS RECOMMENDED.
- 6. UNLESS SPECIFIED OTHERWISE TORQUE VALUES SHALL BE USED PER DOCUMENT, 101-35000.
- USE ITEM 34 WITH TERMINAL 964328.
- USE ITEM 261 WITH TERMINAL 1241406/2208461/2333551.

**\*WARNING**  
ON INSTALLATION, SET WIRE DISC TO CRIMP HEIGHT REFERENCE SETTING FOR LARGEST WIRE SIZE. CRIMP HEIGHT REFERENCE SETTINGS GREATER THAN THE VALUE SHOWN MAY CAUSE DAMAGE TO THE CRIMP TOOLING. REFER TO THE INSTRUCTION SHEET FOR PROPER SETUP AND ADJUSTMENTS

THIS CRIMP PARAMETER IS PROVIDED TO MEET A CUSTOM AND UNIQUE CUSTOMER REQUIREMENT. IT HAS BEEN EVALUATED AND IS CONDITIONALLY SPECIFIED BY TE CONNECTIVITY. THIS CUSTOMIZED CRIMP PARAMETER IS NOT LISED AS AN APPROVED APPLICATION WITHIN A TE CONNECTIVITY APPLICATION SPECIFICATION. HOWEVER, IT HAS BEEN VALIEDTED ACCORDING TO TE CONNECTIVITY SPECIFICATIONS 109-18079 (TEST GROUP 1) AND 114-18022. **TE CONNECTIVITY EXPRESSLY DISCLAIMS ANY AND ALL WARRANTIES THAT THE PRODUCT WILL PERFORM SIMILARLY TO VALIDATED AND APPROVED APPLICATIONS, AS STATED WITHIN TE CONNECTIVITY APPLICATION SPECIFICATIONS, INCLUDING BUT NOT LIMITED TO IMPLIED WARRANTIES OF MERCHANTABILITY OR FITNESS FOR PARTICULAR PURPOSE.** AS SUCH, IT IS HIGHLY RECOMMENDED THAT THE CUSTOMER PERFORM FURTHER DETAILED EVALUATION TO ASSESS PRODUCT PERFORMANCE IN THE SPECIFIC APPLICATION.

THIS SPECIFICATIN PROVIDES AN ALTERNATE CRIMP HEIGHT FOR THE 4.00mm2.

LOC	DIST	REVISIONS					
A	66	P	LTN	DESCRIPTION	DATE	DWN	APVD
		K1		ECR-22-133343	22MAR2022	FJ	JAH
		K2		ECR-22-160432	06DEC2022	FZ	JAH
		K3		ECR-23-171761	10APR2023	FZ	GB
		K4		ECR-23-174134	03MAY2023	JWC	CB

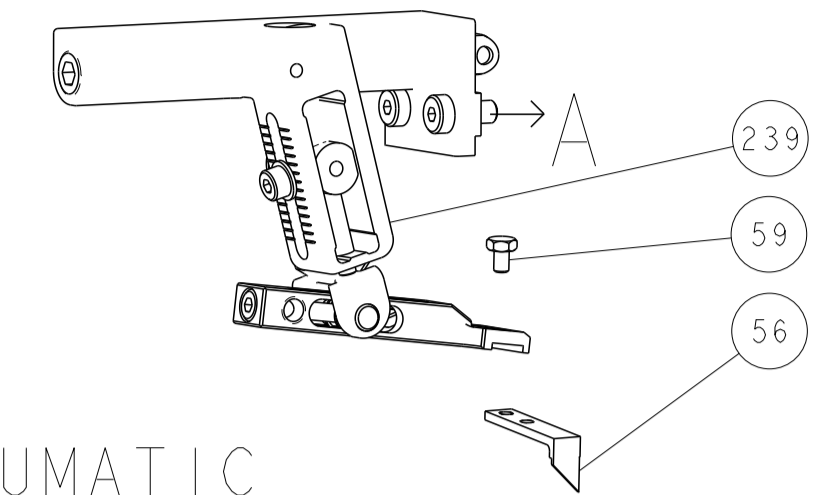
	-	1	1	1	1	1-1752356-5	SUPPORT, TERMINAL	261
	-	1	-	1	-	2119641-1	FEED CAM, AIR FEED	248
	-	1	1	1	1	2119082-7	CAM, SNAIL, INSULATION ADJUSTMENT	244
	-	1	1	1	1	2079764-1	WASHER, WAVE SPRING, CREST-TO-CREST	243
	-	1	1	1	1	2119083-1	RETAINER, INSULATION DIAL	242
	-	1	1	1	1	18023-1	SCR, SKT HD CAP M3 X 5.0	241
	-	-	1	-	1	2119580-1	MECHANICAL FEED ASSEMBLY	239
	-	1	-	1	-	2844940-1	AIR FEED MODULE	238
	-	REF	REF	REF	REF	994970-2	COUNTER, MAGNETIC	164
	-	1	1	1	1	2119955-1	ASSY, LUBRICATOR, SIDE FEED	113
	-	1	1	1	1	2844908-1	SCREW, LOCKING	99
	-	1	1	1	1	2844907-1	POST, LOCKING	98
	-	1	1	1	1	455888-5	SPACER, CRIMPER	82
	-	1	1	1	1	1803607-3	DOCUMENTATION PACKAGE	71
	-	1	1	1	1	2119791-9	DEPRESSOR, WIRE	70
	-	1	1	1	1	2119740-1	TAG, IDENTIFICATION	67
	-	2	2	2	2	2168078-1	SCREW, DRIVE, RH, RoHS, 2 x .188	66
	-	1	1	1	1	2168083-2	SCR, SKT HD CAP, RoHS, M4 X 8.0	60
	-	1	1	1	1	5-18022-5	SCR, HEX HD CAP, M4 X 6.0	59
	-	1	1	1	1	1338685-1	PAWL, FEED	56
	-	4	4	4	4	2168083-3	SCR, SKT HD CAP, RoHS, M4 X 12.0	54
	-	2	2	2	2	1-2168083-0	SCR, SKT HD CAP, RoHS, M4 X 10	53
	-	1	1	1	1	1803382-2	HOLD DOWN, SPRING LOADED	50
	-	1	2	1	2	18023-9	SCR, SKT HD CAP M4 X 6.0	49
	-	-	1	-	1	2119652-1	FEED CAM, PRE FEED	48
	-	-	1	-	1	2119653-1	FEED CAM, POST FEED	47
	-	1	1	1	1	1803583-9	APPLICATOR BASIC ASSEMBLY, SF	46
	-	1	1	1	1	1803515-1	RAM ASSEMBLY, SF ATLANTIC	44
	-	1	1	1	1	1803602-1	SCR, BHSC, RoHS (M8 X 25)	41
	-	1	1	1	1	1-1752356-1	SUPPORT, TERMINAL	34
	-	2	2	2	2	1-2079383-3	SCR, BHSC, RoHS (M4 X 25)	33
	-	2	2	2	2	3-2844962-5	SPACER, CYLINDRICAL, STRIP GUIDE	30
	-	1	1	1	1	2844992-2	ASSEMBLY, STRIP GUIDE	29
	-	1	1	1	1	1-455888-0	SPACER, CRIMPER	28
	-	1	1	1	1	1320928-2	STRIP GUIDE	24
	-	1	1	1	1	2168083-2	SCR, SKT HD CAP, RoHS, M4 X 8.0	21
	-	2	2	2	2	1-18028-2	WASHER, FLAT, REG M4	20
	-	1	1	1	1	2119533-1	STRIPPER, SIDE FEED	19
	-	1	1	1	1	2119806-1	INSERT, SHEAR	13
	-	1	1	1	1	3-22280-3	SPRING, COMPRESSION	12
	-	1	1	1	1	1-356885-4	STOP, SHEAR	11
	-	1	1	1	1	2119805-1	SHEAR HOLDER, FRONT	10
	-	1	1	1	1	454276-5	FLOATING SHEAR, FRONT	9
	1	2	2	1	1	1333209-1	ANVIL, COMBINATION .130	8
	-	1	1	1	1	1-2119757-0	DEPRESSOR, SHEAR	5
	-	1	1	1	1	1-238011-7	BLOCK, CRIMPER SPACER	4
	1	2	2	1	1	2119785-3	CRIMPER, INSULATION OVERLAP PREMIUM	3
	1	2	2	1	1	456410-4	CRIMPER, WIRE PREMIUM	1

DIMENSIONS:		TOLERANCES UNLESS OTHERWISE SPECIFIED:		OWN	CHK	DATE	NAME	
mm	0 PLC ±	1 PLC ±	2 PLC ±	H. HUANG	S. XI	16SEP2011	TE Connectivity	
	3 PLC ±	4 PLC ±	ANGLES ±				Harrisburg, PA 17105-3608	
MATERIAL	FINISH	WEIGHT	SCALE	APVD	PRODUCT SPEC	DATE	Customer Accessible Production Drawing	
			1:2	I. CRUZ		16SEP2011	Ocean Side Feed Applicator	
					APPLICATION SPEC		SIZE	CAGE CODE
							A1	00779
							DRAWING NO	RESTRICTED TO
							©=2151070	
							SHEET	REV
							1 of 4	K4

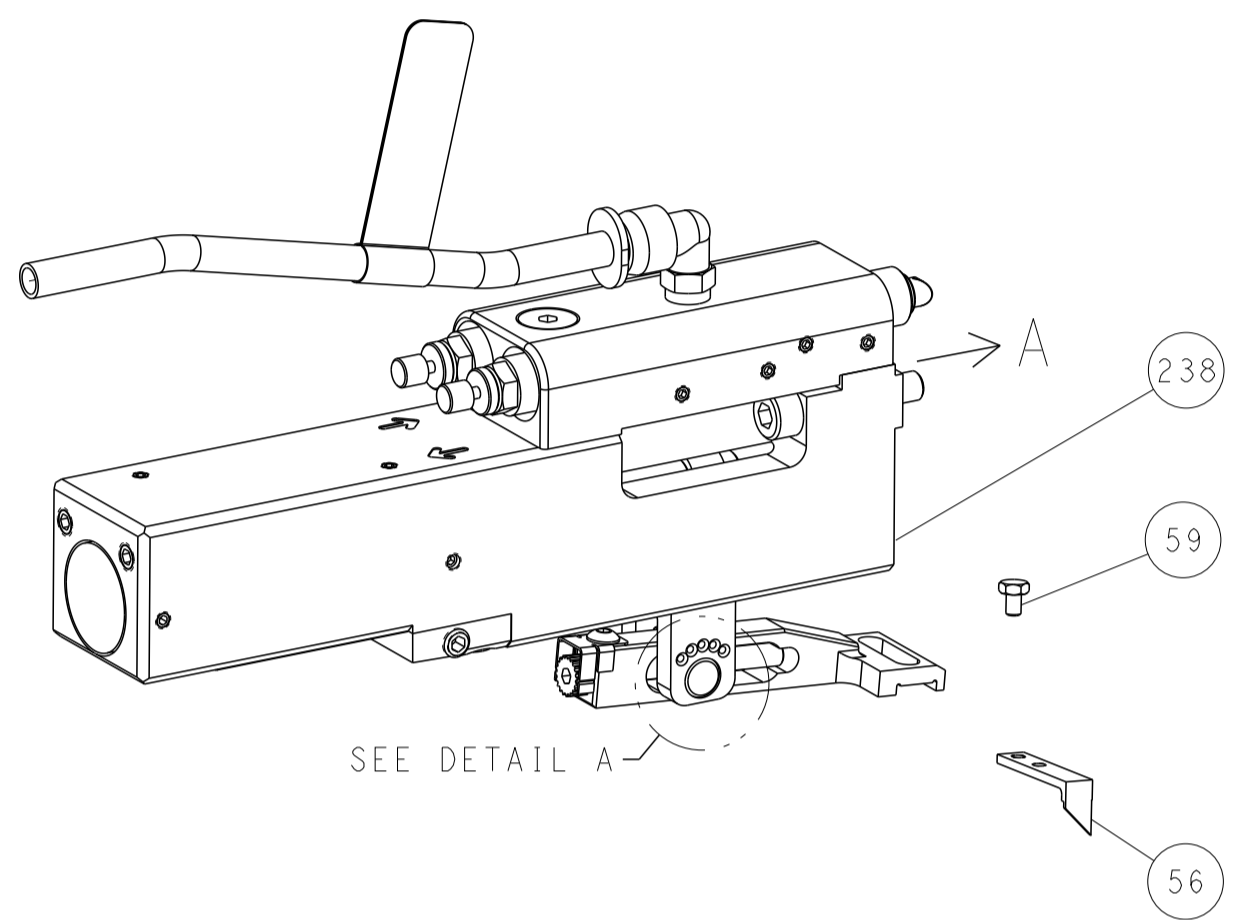
ATLANTIC VERSION  
Shown on sheets 1 of 4 & 2 of 4  
(Pacific version shown on sheets 3 of 4 & 4 of 4)

LOC		DIST		REVISIONS			
A	66	P	LYN	DESCRIPTION	DATE	OWN	APVD
		-		SEE SHEET 1			

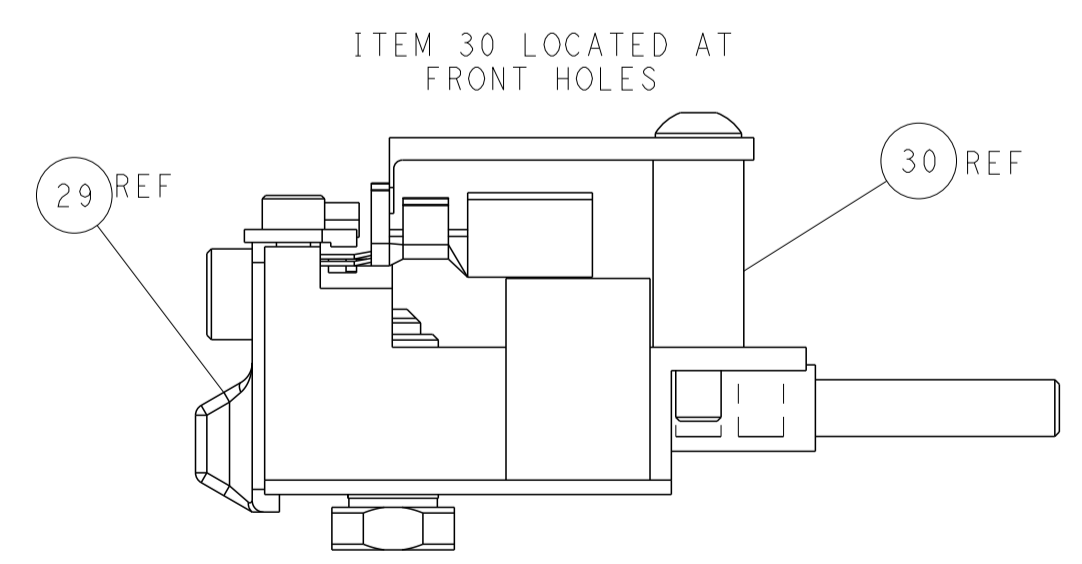
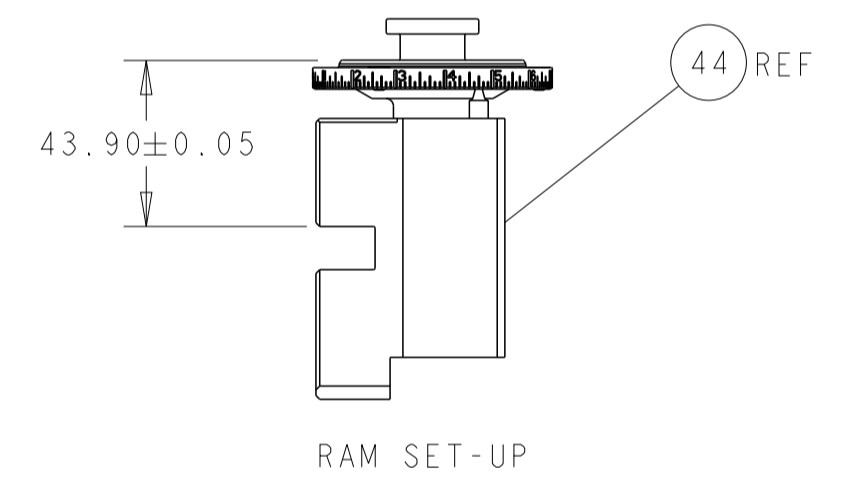
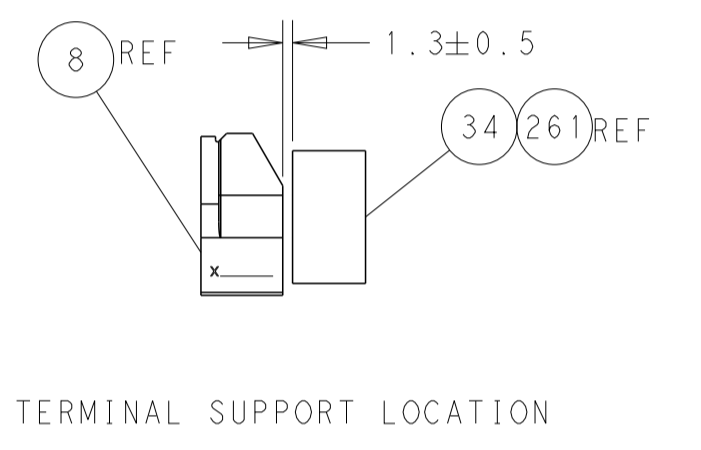
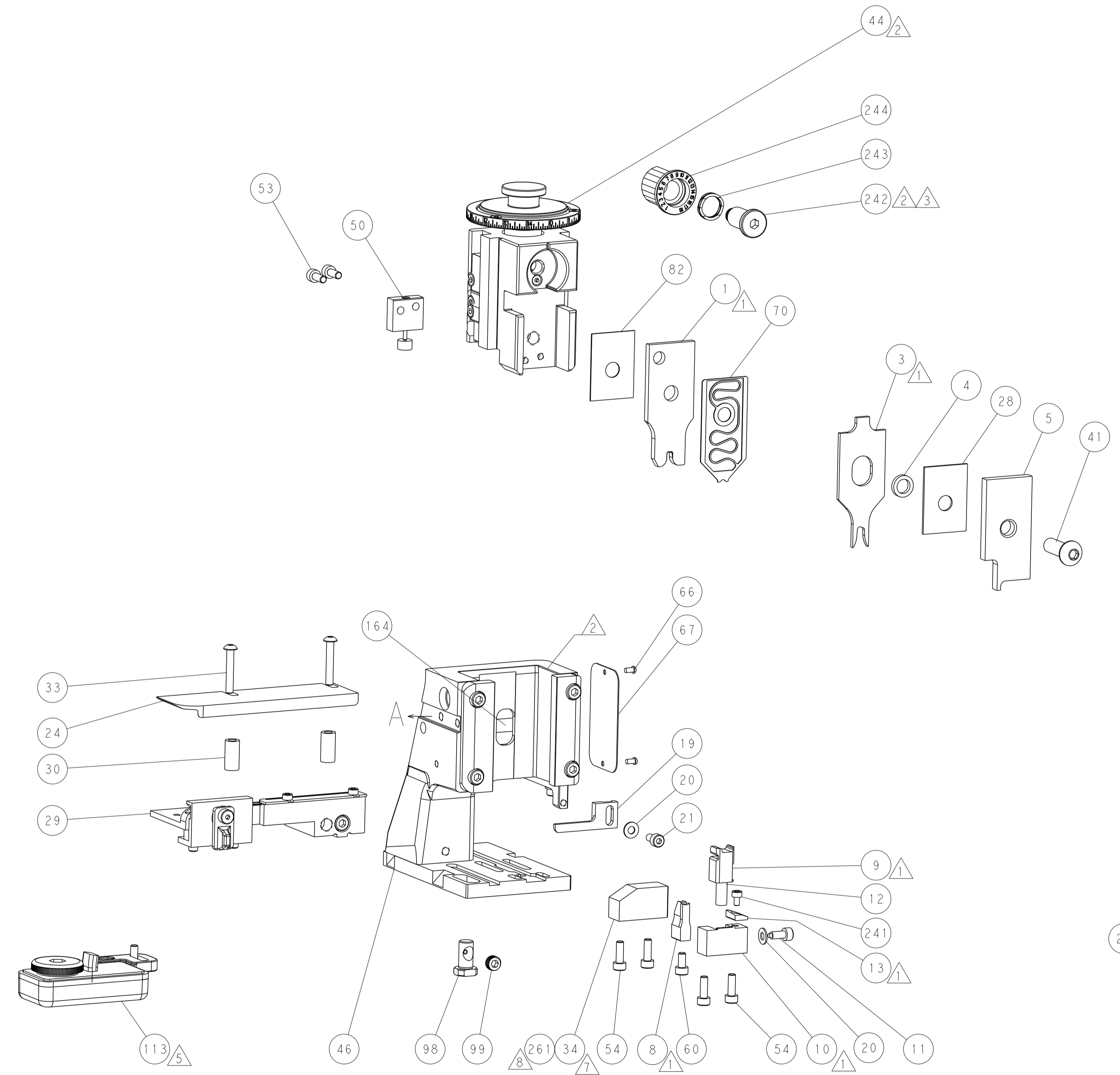
# FEED TYPE MECHANICAL



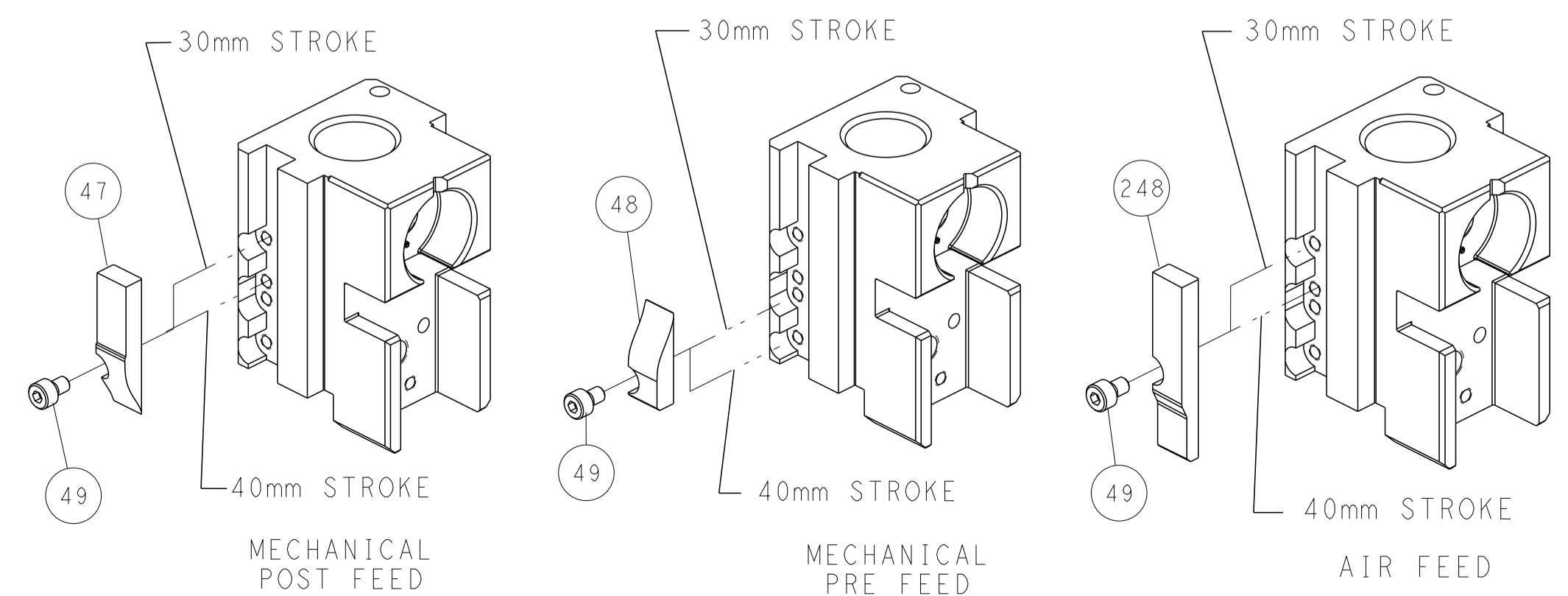
## PNEUMATIC



## FEED SPRING SETTING POSITION (SHOWN FROM REAR SIDE)



# CAM POSITIONS



**ATLANTIC VERSION**  
 Shown on sheets 1 of 4 & 2 of 4  
 (Pacific version shown on sheets 3 of 4 & 4 of 4)

<small>THIS DRAWING IS UNPUBLISHED. RELEASED FOR PUBLICATION BY TYCO ELECTRONICS CORPORATION. ALL RIGHTS RESERVED.</small>		DWN: R. HUANG 16SEP2011 CHK: S. XI 16SEP2011 APVD: J. CRUZ 01JUN2011	NAME: Ocean Side Feed Applicator SIZE: A1 CAGE CODE: 00779 DRAWING NO: C=2151070	TE Connectivity Harrisburg, PA 17105-3608
DIMENSIONS: mm TOLERANCES UNLESS OTHERWISE SPECIFIED: 0 PLC ± 1 PLC ± 2 PLC ± 3 PLC ± 4 PLC ± ANGLES FINISH	TOLERANCES UNLESS OTHERWISE SPECIFIED: ± ± ± ± ±	PRODUCT SPEC APPLICATION SPEC WEIGHT SCALE: 1:2	SHEET 2 OF 4 REV. K4	RESTRICTED TO

PART NUMBER	REVISION	DESCRIPTION	FEED TYPE
2-2151070-1	K	FINE CRIMP HEIGHT ADJUST	MECHANICAL
2-2151070-2	K	FINE CRIMP HEIGHT ADJUST	PNEUMATIC
7-2151070-7	A	CRIMP TOOLING KIT	-

PACIFIC VERSION TERMINATOR  
 INTERFACE ADAPTER



APPLICATOR DATA		
CRIMP	SIZE	TYPE
WIRE	3.30 mm [.130]	F
INSUL	4.57 mm [.180]	OV
APPLICATOR INSTRUCTIONS 408-35042		

TERMINAL DATA: TE TERMINAL		TE CRIMP SPECIFICATION	
TERMINAL NAME: STANDARD POWER TIMER CONTACT			
WIRE STRIP LENGTH		INSULATION DIAMETER RANGE	
4.40-5.00 mm [.173-.197 IN]		Ø3.30-4.50 mm [.130-.177 IN]	
TERMINAL APPLICATION SPECIFICATION	(A)114-18037	-	-
	(B)114-18388	-	-
TERMINALS APPLIED			
TE TERMINAL	TE TERMINAL	TE TERMINAL	TE TERMINAL
(A) 964328-1	(A) 964328-5	(B) 1241406-1	(B) 1241406-3
(B) 1-2208461-3	(B) 1-2333551-3		

TERMINAL DATA: TE TERMINAL		TE CRIMP SPECIFICATION	
TERMINAL NAME: STANDARD POWER TIMER CONTACT			
WIRE STRIP LENGTH		INSULATION DIAMETER RANGE	
4.40-5.00 mm [.173-.197 IN]		Ø3.30-4.50 mm [.130-.177 IN]	
TERMINAL APPLICATION SPECIFICATION	-	-	-
TERMINALS APPLIED			
TE TERMINAL	TE TERMINAL	TE TERMINAL	TE TERMINAL
1241406-1	964328-1	-	-

TERMINAL DATA: TE TERMINAL		TE CRIMP SPECIFICATION	
TERMINAL NAME: STANDARD POWER TIMER CONTACT			
WIRE STRIP LENGTH		INSULATION DIAMETER RANGE	
4.40-5.00 mm [.173-.197 IN]		Ø3.30-4.50 mm [.130-.177 IN]	
TERMINAL APPLICATION SPECIFICATION	(B) 114-18388	-	-
TERMINALS APPLIED			
TE TERMINAL	TE TERMINAL	TE TERMINAL	TE TERMINAL
(B) 1-2208461-3	(B) 1-2333551-3	(B) 1241406-1	(B) 1241406-3

WIRE SIZE	CRIMP HEIGHT mm [INCH]	CRIMP HEIGHT REFERENCE SETTING
4.00mm2	2.35+/-0.05 [.093+/- .002]	4.3
3.50mm2	2.24+/-0.05 [.088+/- .002]	5.9
3.00mm2	2.13+/-0.05 [.084+/- .002]	6.8

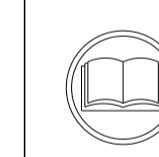
WIRE SIZE	CRIMP HEIGHT mm [INCH]	CRIMP HEIGHT REFERENCE SETTING
1.50mm2+2.50mm2	2.35+/-0.05 [.093+/- .002]	4.3

WIRE SIZE	CRIMP HEIGHT mm [INCH]	CRIMP HEIGHT REFERENCE SETTING
4.0mm2	2.22+/-0.05 [.087+/- .002]	4.3

LOC		DIST		REVISIONS			
A	66	P	LTN	DESCRIPTION	DATE	OWN	APVD
-	-	-	-	SEE SHEET 1	-	-	-

ITEM NO	QTY	DESCRIPTION	ITEM NO		
261	1	SUPPORT, TERMINAL	261		
244	1	CAM, SNAIL, INSULATION ADJUSTMENT	244		
243	1	WASHER, WAVE SPRING, CREST-TO-CREST	243		
242	1	RETAINER, INSULATION DIAL	242		
241	1	SCR, SKT HD CAP M3 X 5.0	241		
239	1	MECHANICAL FEED ASSEMBLY	239		
238	1	AIR FEED MODULE	238		
164	REF	COUNTER, MAGNETIC	164		
151	1	FEED CAM, AIR FEED	151		
144	1	SCR, SKT HD CAP, RoHS, M4 X 16	144		
143	4	SCR, SKT HD CAP, RoHS, M4 X 20	143		
142	1	FEED CAM, POST FEED	142		
141	1	APPLICATOR BASIC ASSEMBLY, SF	141		
140	1	RAM ASSEMBLY, SF PACIFIC	140		
113	1	ASSY, LUBRICATOR, SIDE FEED	113		
99	1	SCREW, LOCKING	99		
98	1	POST, LOCKING	98		
82	1	SPACER, CRIMPER	82		
71	1	DOCUMENTATION PACKAGE	71		
70	1	DEPRESSOR, WIRE	70		
67	1	TAG, IDENTIFICATION	67		
66	2	SCREW, DRIVE, RH, RoHS, 2 x .188	66		
59	1	SCR, HEX HD CAP, M4 X 6.0	59		
56	1	PAWL, FEED	56		
53	2	SCR, SKT HD CAP, RoHS, M4 X 10	53		
50	1	HOLD DOWN, SPRING LOADED	50		
49	1	SCR, SKT HD CAP M4 X 6.0	49		
48	1	FEED CAM, PRE FEED	48		
41	1	SCR, BHSC, RoHS (M8 X 25)	41		
34	1	SUPPORT, TERMINAL	34		
33	2	SCR, BHSC, RoHS (M4 X 25)	33		
30	2	SPACER, CYLINDRICAL, STRIP GUIDE	30		
29	1	ASSEMBLY, STRIP GUIDE	29		
28	1	SPACER, CRIMPER	28		
24	1	STRIP GUIDE	24		
21	1	SCR, SKT HD CAP, RoHS, M4 X 8.0	21		
20	2	WASHER, FLAT, REG M4	20		
19	1	STRIPPER, SIDE FEED	19		
13	1	INSERT, SHEAR	13		
12	1	SPRING, COMPRESSION	12		
11	1	STOP, SHEAR	11		
10	1	SHEAR HOLDER, FRONT	10		
9	1	FLOATING SHEAR, FRONT	9		
8	1	ANVIL, COMBINATION .130	8		
5	1	DEPRESSOR, SHEAR	5		
4	1	BLOCK, CRIMPER SPACER	4		
3	1	CRIMPER, INSULATION OVERLAP PREMIUM	3		
1	1	CRIMPER, WIRE PREMIUM	1		
-77	-22	-21	PART NO	DESCRIPTION	ITEM NO



- 1 RECOMMENDED SPARE PARTS
- 2 REFER TO SUPPLIED INSTRUCTION SHEET FOR CLEANING, LUBRICATION AND STORAGE OF APPLICATOR.
- 3 APPLY PART NUMBER 2-23419-6 LOCTITE TO THREADS OF ITEM 242.
- 4 CRIMP HEIGHT REFERENCE SETTING WAS THE SETTING USED WHEN THE APPLICATOR WAS QUALIFIED AT THE FACTORY. ADJUSTMENT MAY BE NECESSARY WHEN RUNNING APPLICATOR IN THE FIELD.
- 5 TERMINAL LUBRICANT IS RECOMMENDED.
- 6. UNLESS SPECIFIED OTHERWISE TORQUE VALUES SHALL BE USED PER DOCUMENT, 101-35000.
- 7 USE ITEM 34 WITH TERMINAL 964328.
- 8 USE ITEM 261 WITH TERMINAL 1241406/2208461/2333551.
- 9 THIS CRIMP PARAMETER IS PROVIDED TO MEET A CUSTOM AND UNIQUE CUSTOMER REQUIREMENT. IT HAS BEEN EVALUATED AND IS CONDITIONALLY SPECIFIED BY TE CONNECTIVITY. THIS CUSTOMIZED CRIMP PARAMETER IS NOT LISTED AS AN APPROVED APPLICATION WITHIN A TE CONNECTIVITY APPLICATION SPECIFICATION; HOWEVER, IT HAS BEEN VALIDATED ACCORDING TO CONNECTIVITY SPECIFICATIONS 109-18079 (TEST GROUP 1) AND 114-18022. **TE CONNECTIVITY EXPRESSLY DISCLAIMS ANY AND ALL WARRANTIES THAT THE PRODUCT WILL PERFORM SIMILARLY TO VALIDATED AND APPROVED APPLICATIONS, AS STATED WITHIN TE CONNECTIVITY APPLICATION SPECIFICATIONS, INCLUDING BUT NOT LIMITED TO IMPLIED WARRANTIES OF MERCHANTABILITY OR FITNESS FOR PARTICULAR PURPOSE.** AS SUCH, IT IS HIGHLY RECOMMENDED THAT THE CUSTOMER PERFORM FURTHER DETAILED EVALUATION TO ASSESS PRODUCT PERFORMANCE IN THE SPECIFIC APPLICATION.
- 10 THIS SPECIFICATION PROVIDES AN ALTERNATE CRIMP HEIGHT FOR THE 4.00mm2

**\*WARNING**  
 ON INSTALLATION, SET WIRE DISC TO CRIMP HEIGHT REFERENCE SETTING FOR LARGEST WIRE SIZE. CRIMP HEIGHT REFERENCE SETTINGS GREATER THAN THE VALUE SHOWN MAY CAUSE DAMAGE TO THE CRIMP TOOLING. REFER TO THE INSTRUCTION SHEET FOR PROPER SETUP AND ADJUSTMENTS

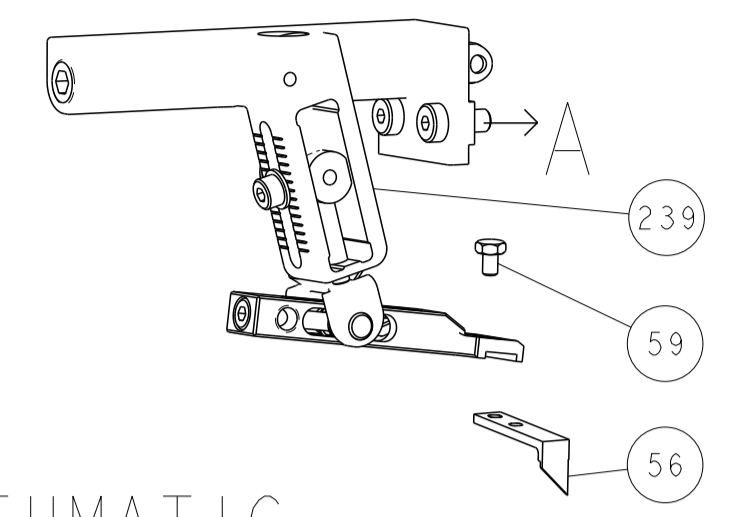
ENTRY LEVEL APPLICATOR		ITEM SUBSTITUTION LIST		
PART NUMBER	SAME AS	ITEM	ITEM DESCRIPTION	SUBSTITUTE PART NUMBER
8-2151070-1	2151070-1	1	WIRE CRIMPER	1803551-4
8-2151070-2	2151070-2	3	INSULATION CRIMPER	1803625-3
9-2151070-1	2-2151070-1	46	BASIC SUB -ASSEMBLY	1803940-9
9-2151070-2	2-2151070-2	141	BASIC SUB -ASSEMBLY	1-1803940-0
			LUBRICATOR	DELETE

PACIFIC VERSION  
 Shown on sheets 3 of 4 & 4 of 4  
 (Atlantic version shown on sheets 1 of 4 & 2 of 4)

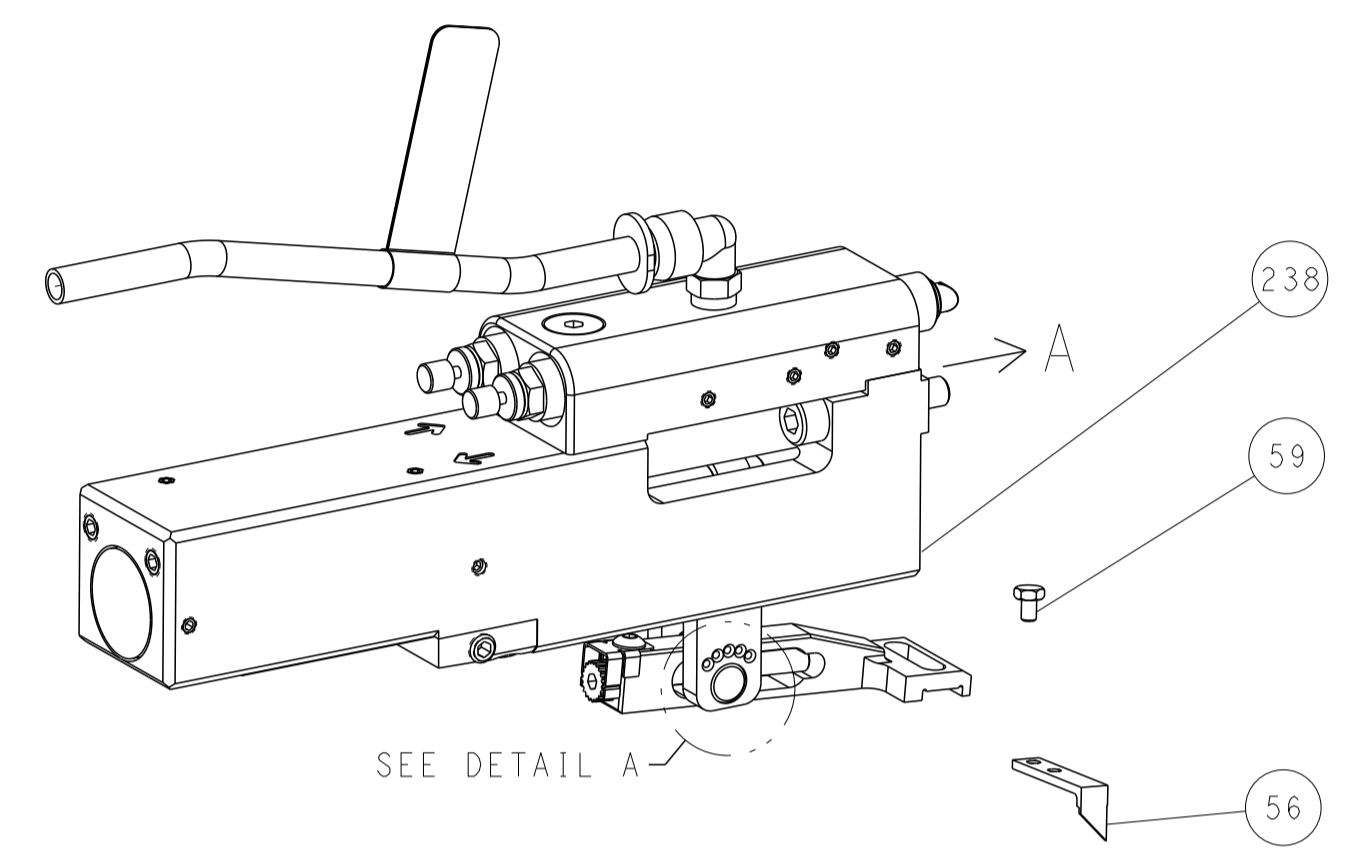
DIMENSIONS: mm		TOLERANCES UNLESS OTHERWISE SPECIFIED:		DRAWN: H. HUANG 16SEP2011		CHK: S. XI 16SEP2011		APVD: J. CRUZ 16SEP2011		NAME: Ocean Side Feed Applicator	
0 PLC ±		1 PLC ±		2 PLC ±		3 PLC ±		4 PLC ±		RESTRICTED TO	
MATERIAL: -		FINISH: -		WEIGHT: -		SIZE: A1		CAGE CODE: 00779		DRAWING NO: C=2151070	
Customer Accessible Production Drawing				SCALE: 1:2		SHEET: 3 of 4		REV: K4			

LOC	DIST	REVISIONS					
A	66	P	LTM	DESCRIPTION	DATE	OWN	APVD
		-	-	SEE SHEET 1	-	-	-

# FEED TYPE MECHANICAL



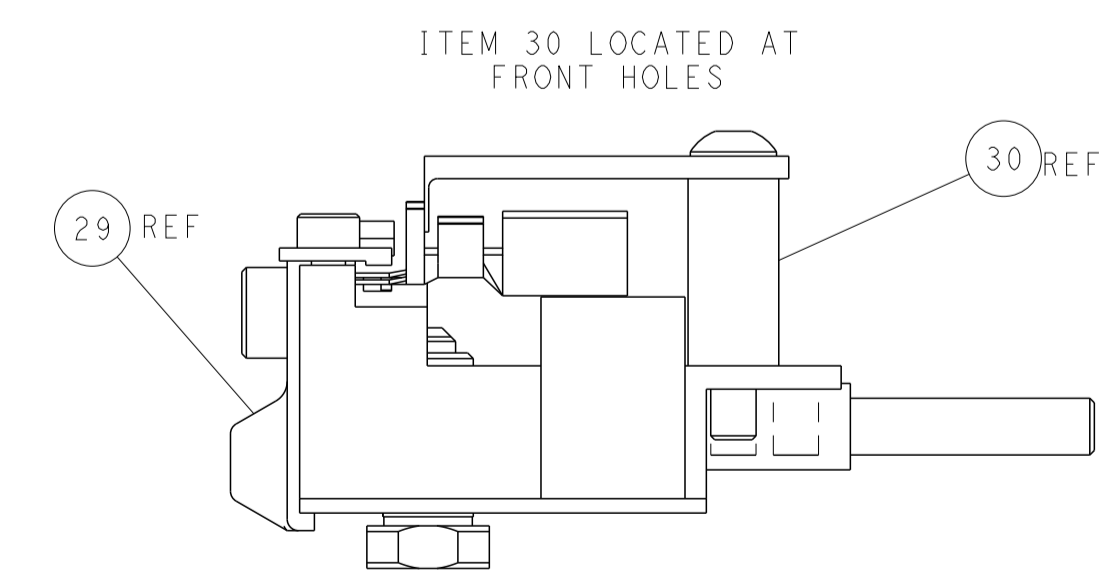
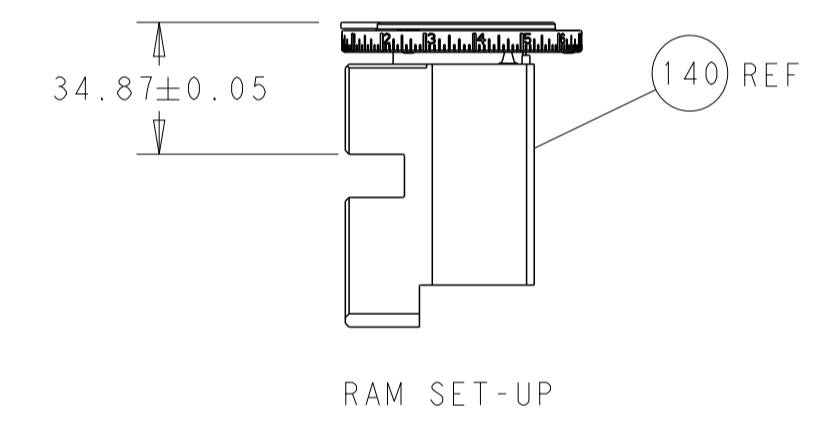
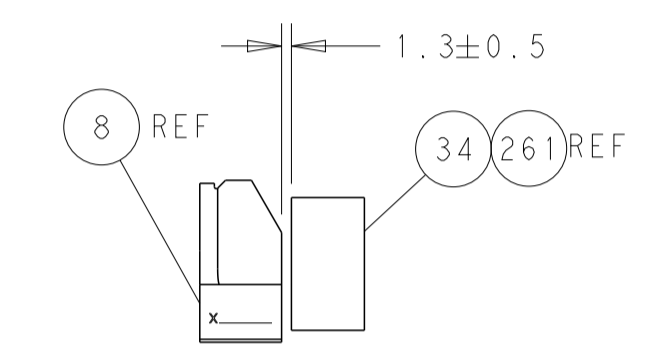
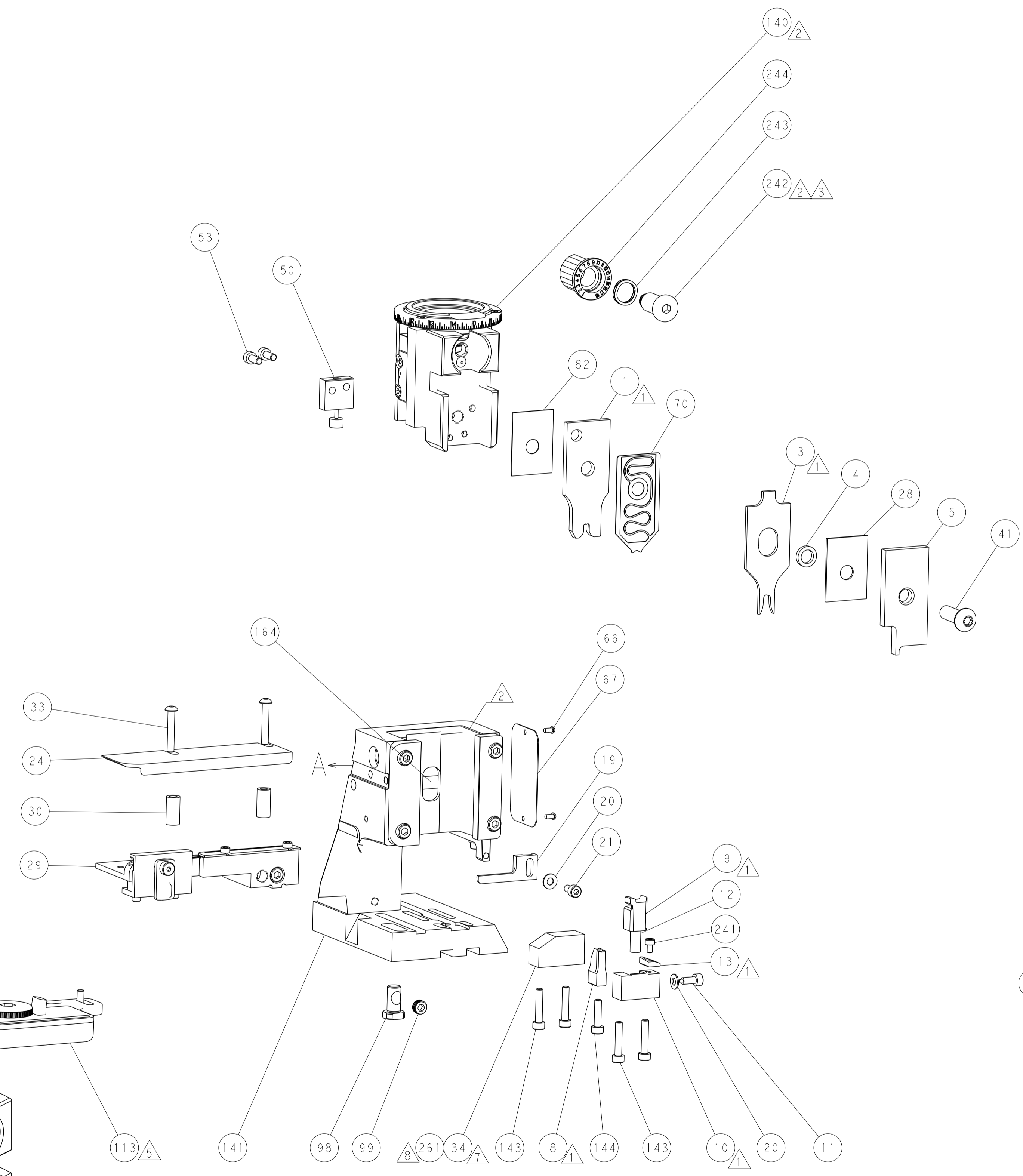
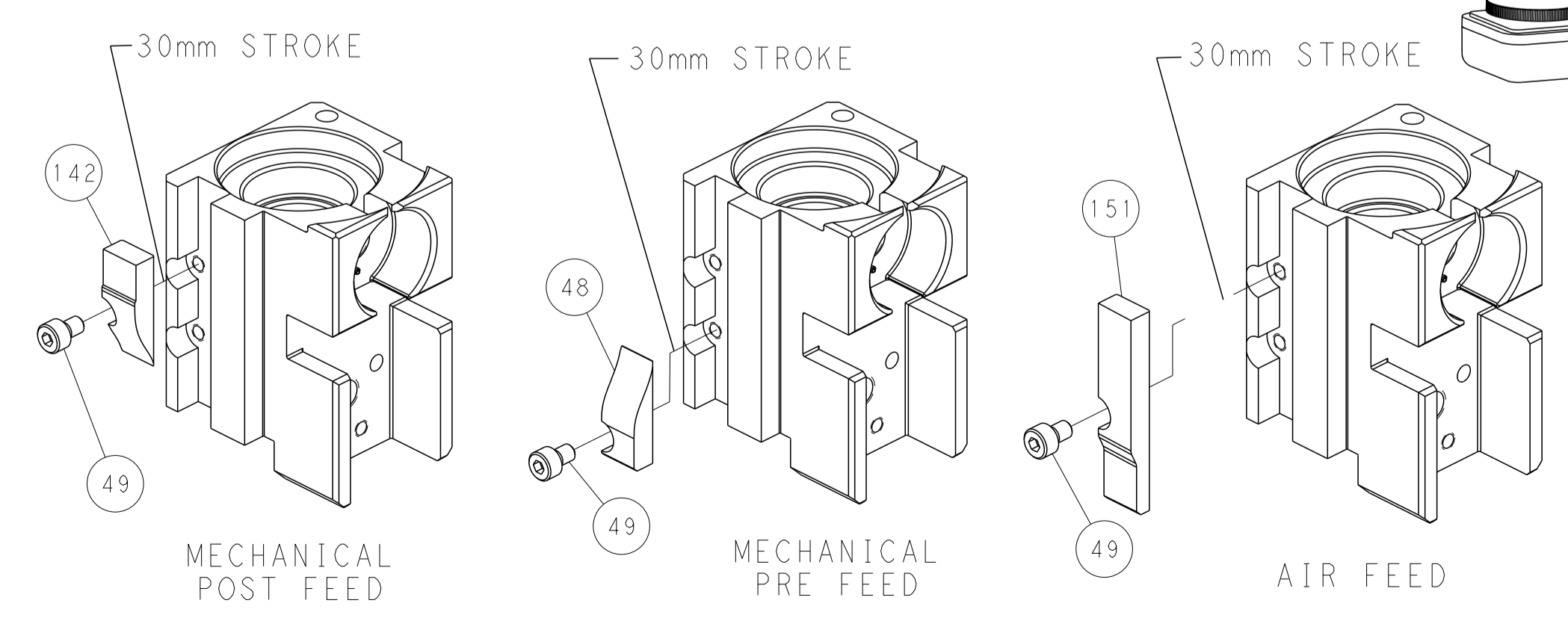
## PNEUMATIC



## FEED SPRING SETTING POSITION (SHOWN FROM REAR SIDE)



# CAM POSITIONS



**PACIFIC VERSION**  
 Shown on sheets 3 of 4 & 4 of 4  
 (Atlantic version shown on sheets 1 of 4 & 2 of 4)

<small>THIS DRAWING IS UNPUBLISHED. RELEASED FOR PUBLICATION. ALL RIGHTS RESERVED. © 2011 BY TYCO ELECTRONICS CORPORATION. THIS IS THE PROPERTY OF COMPANY AND CONTROL AND DISTRIBUTION OF THIS DRAWING SHOULD BE CONTACTED FOR THE LATEST POSITION.</small>		DWN: H. HUANG 16SEP2011 CHK: S. XI 16SEP2011 APVD: J. CRUZ 16SEP2011	NAME: TE Connectivity Harrisburg, PA 17105-3608
DIMENSIONS: mm TOLERANCES UNLESS OTHERWISE SPECIFIED: 0 PLC ± 1 PLC ± 2 PLC ± 3 PLC ± 4 PLC ± ANGLES ± FINISH	PRODUCT SPEC APPLICATION SPEC WEIGHT SCALE: 1:2	SIZE: A1 CAGE CODE: 00779 DRAWING NO: C=2151070	RESTRICTED TO: - SHEET 4 OF 4 REV K4