

TOLERANCES UNLESS OTHERWISE SPECIFIED

.X	±0.35
.XX	±0.25
.XXX	±0.15

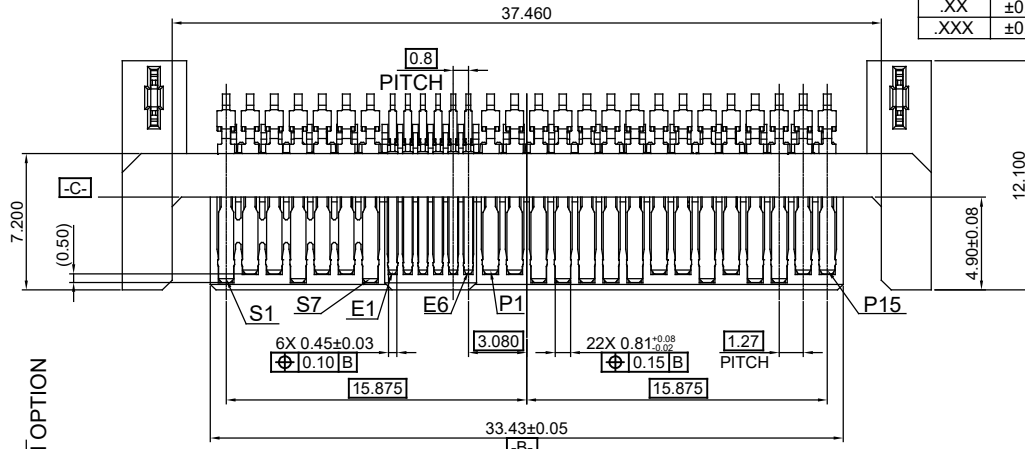
THIS IS A C.A.D. GENERATED DRAWING  
DO NOT MAKE MANUAL REVISIONS TO MASTER.



ISSUE NUMBER

ORIGINAL

1

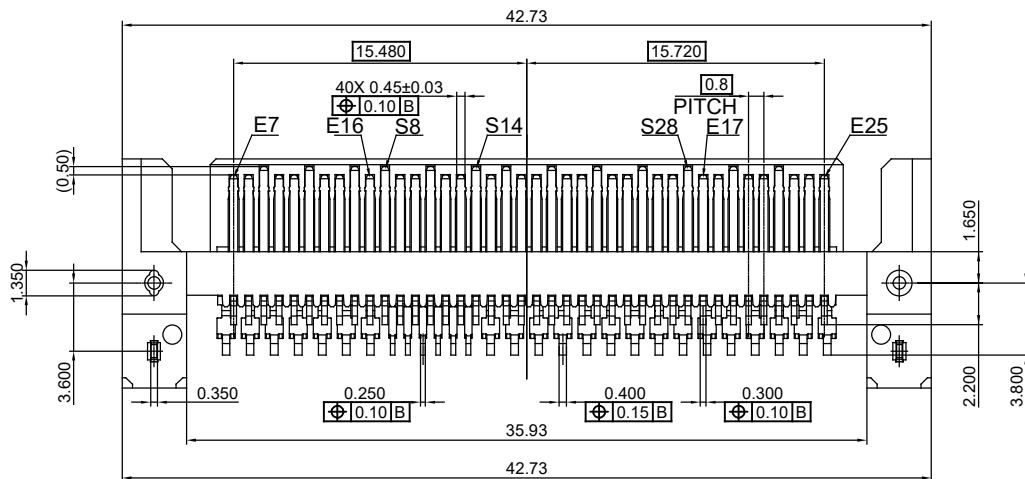
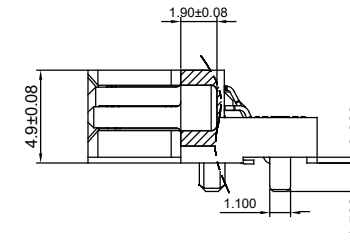
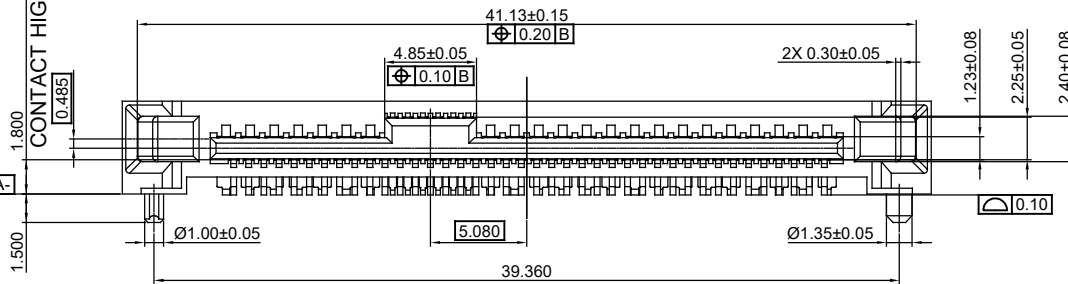


NOTES:

MATERIAL:  
HOUSING:  
CONTACT:

L.C.P GLASS FILLED, UL-94V-0  
COPPER ALLOY, 30µ" GOLD PLATING ON CONTACT AREA  
MATTE TIN PLATING ON SOLDER TAIL OVER 50µ" MIN.  
NICKEL UNDER PLATING

CONTACT HIGH OPTION



5	LATCH	2	COPPER ALLOY	TIN 100~200
4	PITCH 0.80 CONTACT	46	COPPER ALLOY	SEE NOTES
3	PITCH 0.27 CONTACT	22	COPPER ALLOY	SEE NOTES
2	CAP	31	GLASS FILLED LCP, UL94 V-0	BLACK
1	HOUSING	1	GLASS FILLED LCP, UL94 V-0	BLACK
NO.	DESCRIPTION	QTY.	MATERIAL	FINISH/COLOR

### SAS CONNECTOR, RA SMT W/ GROUNDING PAD, 68 CONTACTS, MALE

ACAD REFERENCE NO.: 270-068-671-001

DRAWN: W.T DATE: JULY.03 /2018

CHECKED: DATE:

SCALE: N.T.S SHEET 1 OF 2

DRAWING NUMBER: 270-068-671-001

ISSUE

PART NUMBER: 270-068-671-001

1



THIS SERIES FULLY CONFORMS TO  
THE EUROPEAN UNION DIRECTIVES  
2011/65/EU FOR RoHS COMPLIANCE.



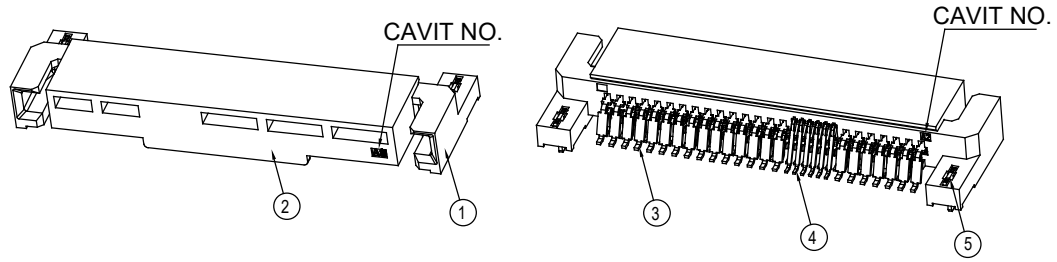
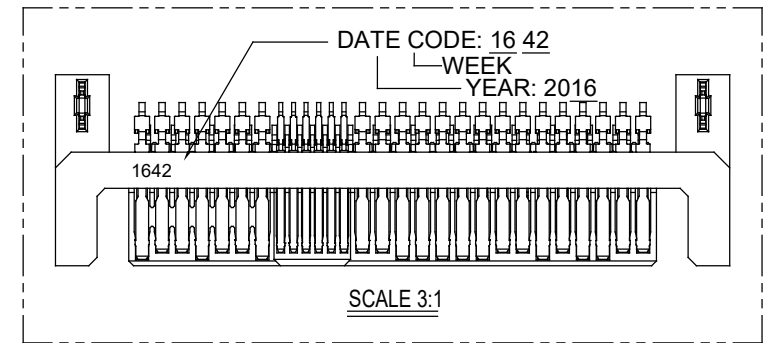
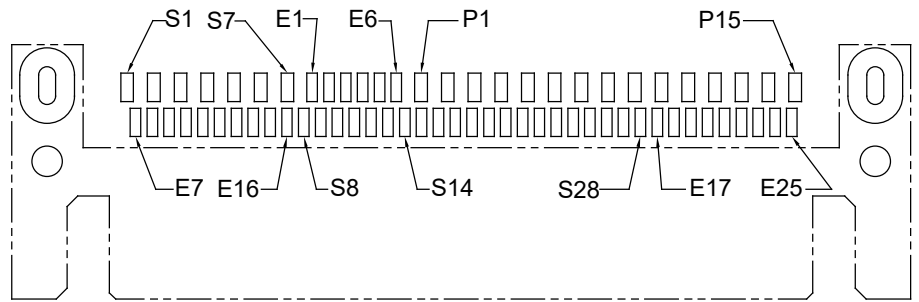
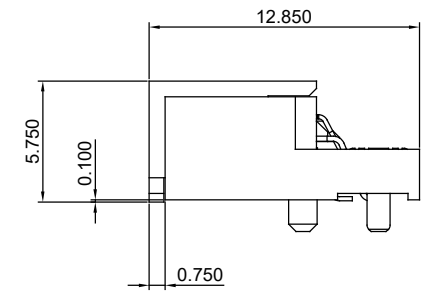
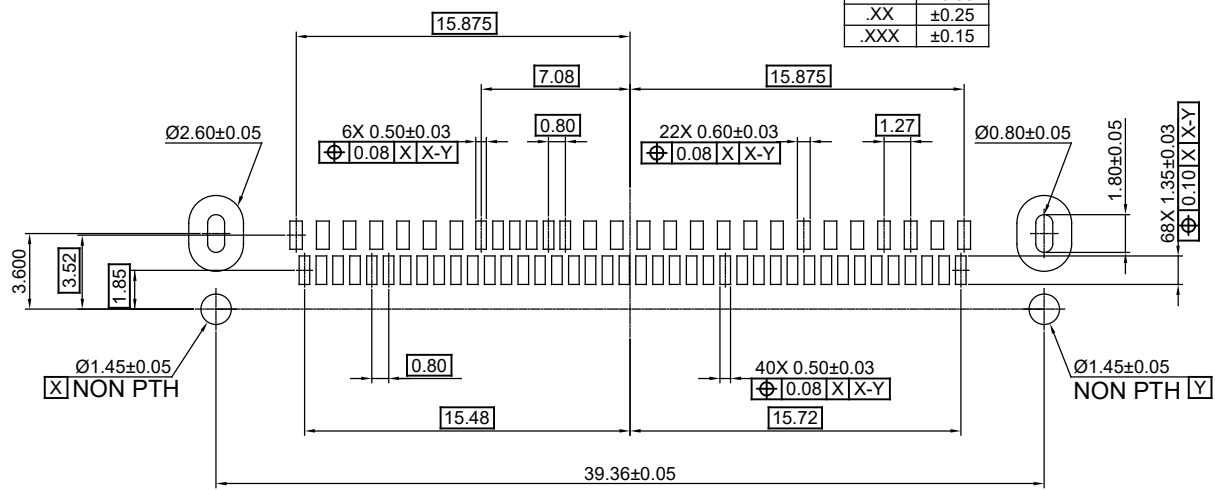
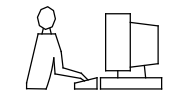
YOUR CONNECTION TO QUALITY & SERVICE

EDAC INC  
TORONTO, ONTARIO  
CANADA

THESE DRAWINGS AND SPECIFICATIONS  
ARE THE PROPERTY OF EDAC INC., AND  
SHALL NOT BE REPRODUCED, OR COPIED  
OR USED AS THE BASIS FOR THE  
MANUFACTURE OR SALE OF APPARATUS  
WITHOUT WRITTEN PERMISSION.

TOLERANCE UNLESS OTHERWISE SPECIFIED	
.X	±0.35
.XX	±0.25
.XXX	±0.15

THIS IS A C.A.D. GENERATED DRAWING  
DO NOT MAKE MANUAL REVISIONS TO MASTER.



NO.	DESCRIPTION	QTY.	MATERIAL	FINISH/COLOR
5	LATCH	2	COPPER ALLOY	TIN 100-200
4	PITCH 0.80 CONTACT	46	COPPER ALLOY	SEE NOTES
3	PITCH 0.27 CONTACT	22	COPPER ALLOY	SEE NOTES
2	CAP	31	GLASS FILLED LCP, UL94 V-0	BLACK
1	HOUSING	1	GLASS FILLED LCP, UL94 V-0	BLACK

SAS CONNECTOR, RA SMT  
W/ GROUNDING PAD, 68 CONTACTS, MALE

ACAD REFERENCE NO.: 270-068-671-001	
DRAWN: W.T	DATE: JULY.03 /2018
CHECKED:	DATE:
SCALE: N.T.S	SHEET 2 OF 2
DRAWING NUMBER: 270-068-671-001	ISSUE 1
PART NUMBER: 270-068-671-001	



THIS SERIES FULLY CONFORMS TO THE EUROPEAN UNION DIRECTIVES 2011/65/EU FOR RoHS COMPLIANCY.



EDAC INC  
TORONTO, ONTARIO  
CANADA  
YOUR CONNECTION TO QUALITY & SERVICE

THESE DRAWINGS AND SPECIFICATIONS ARE THE PROPERTY OF EDAC INC., AND SHALL NOT BE REPRODUCED, OR COPIED OR USED AS THE BASIS FOR THE MANUFACTURE OR SALE OF APPARATUS WITHOUT WRITTEN PERMISSION.