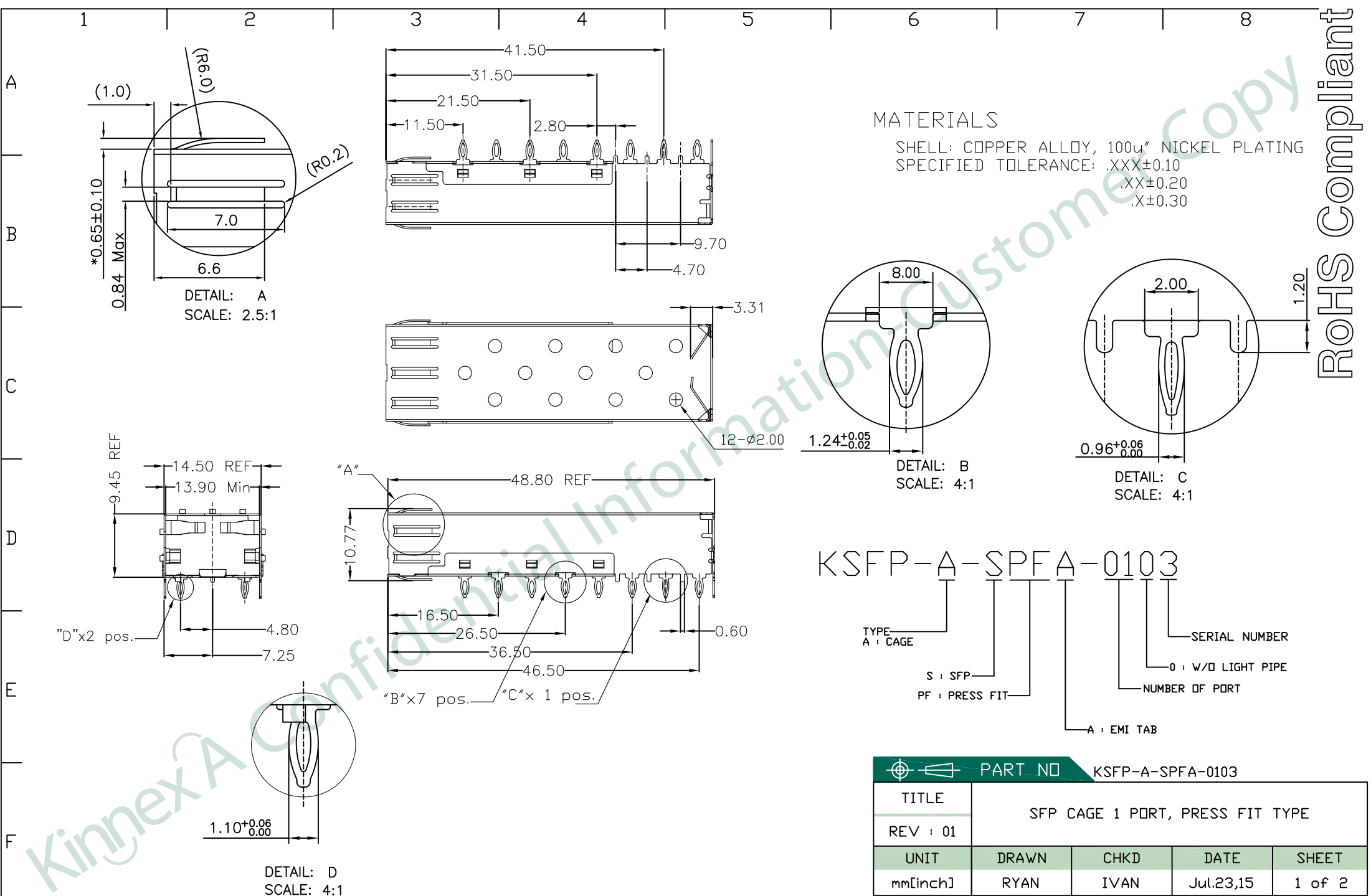
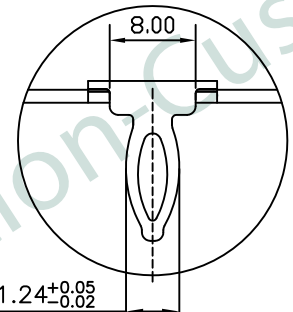


ROHS Compliant

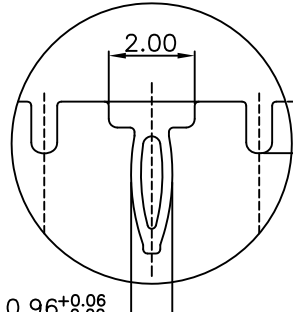


MATERIALS

SHELL: COPPER ALLOY, 100u" NICKEL PLATING
 SPECIFIED TOLERANCE: .XXX±0.10
 .XX±0.20
 .X±0.30



DETAIL: B
SCALE: 4:1

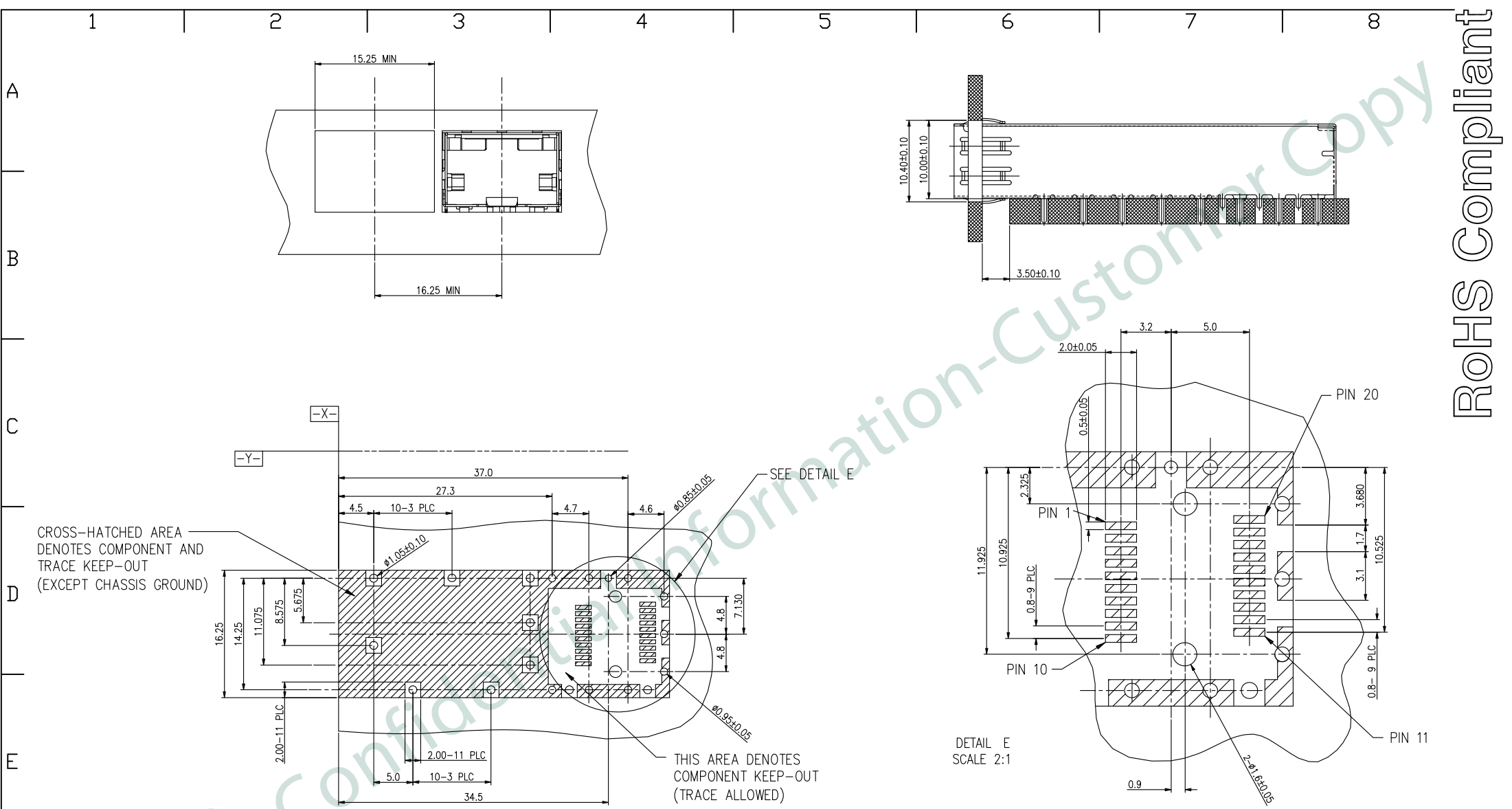


DETAIL: C
SCALE: 4:1

KSFP-A-SPFA-0103

TYPE
A : CAGE
S : SFP
PF : PRESS FIT
A : EMI TAB
SERIAL NUMBER
0 : W/D LIGHT PIPE
NUMBER OF PORT

PART NO		KSFP-A-SPFA-0103		
TITLE	SFP CAGE 1 PORT, PRESS FIT TYPE			
REV : 01				
UNIT	DRAWN	CHKD	DATE	SHEET
mm[inch]	RYAN	IVAN	Jul.23,15	1 of 2



PART NO		KSFP-A-SPFA-0103		
TITLE	SFP CAGE 1 PORT, PRESS FIT TYPE			
REV : 01				
UNIT	DRAWN	CHKD	DATE	SHEET
mm[inch]	RYAN	IVAN	Jul.23,15	2 of 2